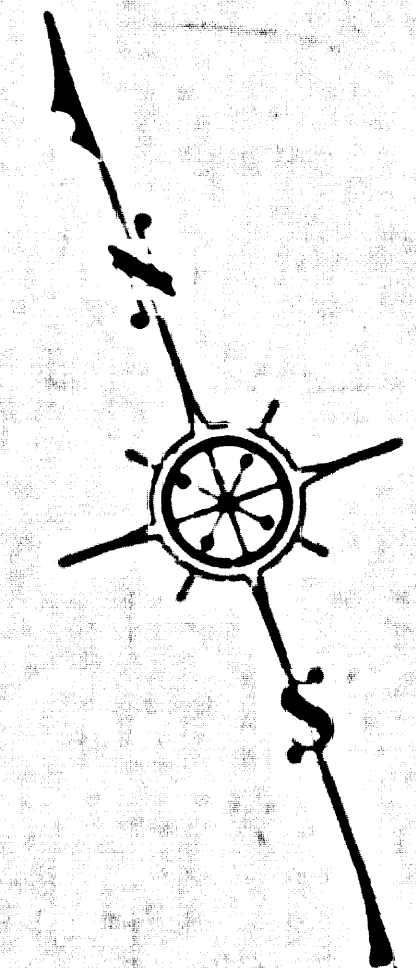
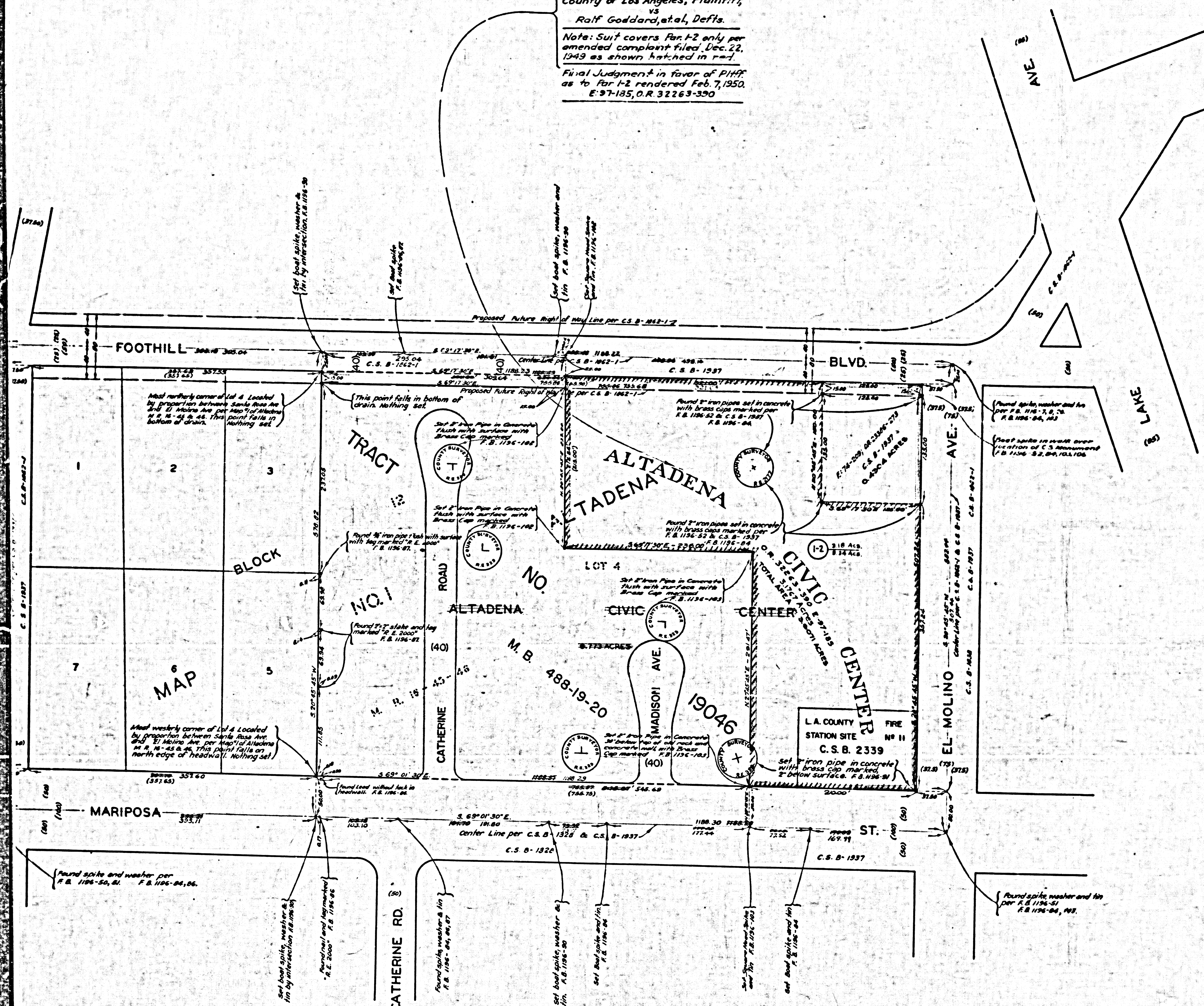


Superior Court Case No. 542153  
 Suit for Condemnation  
 Filed March 16, 1948  
 County of Los Angeles, Plaintiff, vs.  
 Rolf Goddard, et al, Defs.  
 Note: Suit covers Part 2 only per  
 amended complaint filed Dec. 22,  
 1949 as shown hatched in red.  
 Final Judgment in favor of Plaintiff  
 as to Part 2 rendered Feb. 7, 1950.  
 E-97-185, O.R. 32263-350



COUNTY OF LOS ANGELES  
 BOUNDARY AND TOPOGRAPHIC MAP OF  
**ALTADENA CIVIC CENTER**

BEING  
 A PORTION OF  
 LOT 4 BLOCK 12, MAP NO. 1 ALTADENA MR. 16-45-46.

COUNTY SURVEYORS MAP NO. B-2072  
 SCALE: 1 INCH = 50 FT.

JOB NUMBER 6422

C. E. ARNOLD COUNTY SURVEYOR

SURVEYED DECEMBER 1947

SURVEYED ON REQUEST OF THE CHIEF  
 MECHANICAL ENGINEER UNDER SEC. 7909  
 4099 BY LETTER DATED OCT. 6, 1947

BEARINGS ARE AS SHOWN ON C.S.B. 1937

F. B. 1196-B TO 85

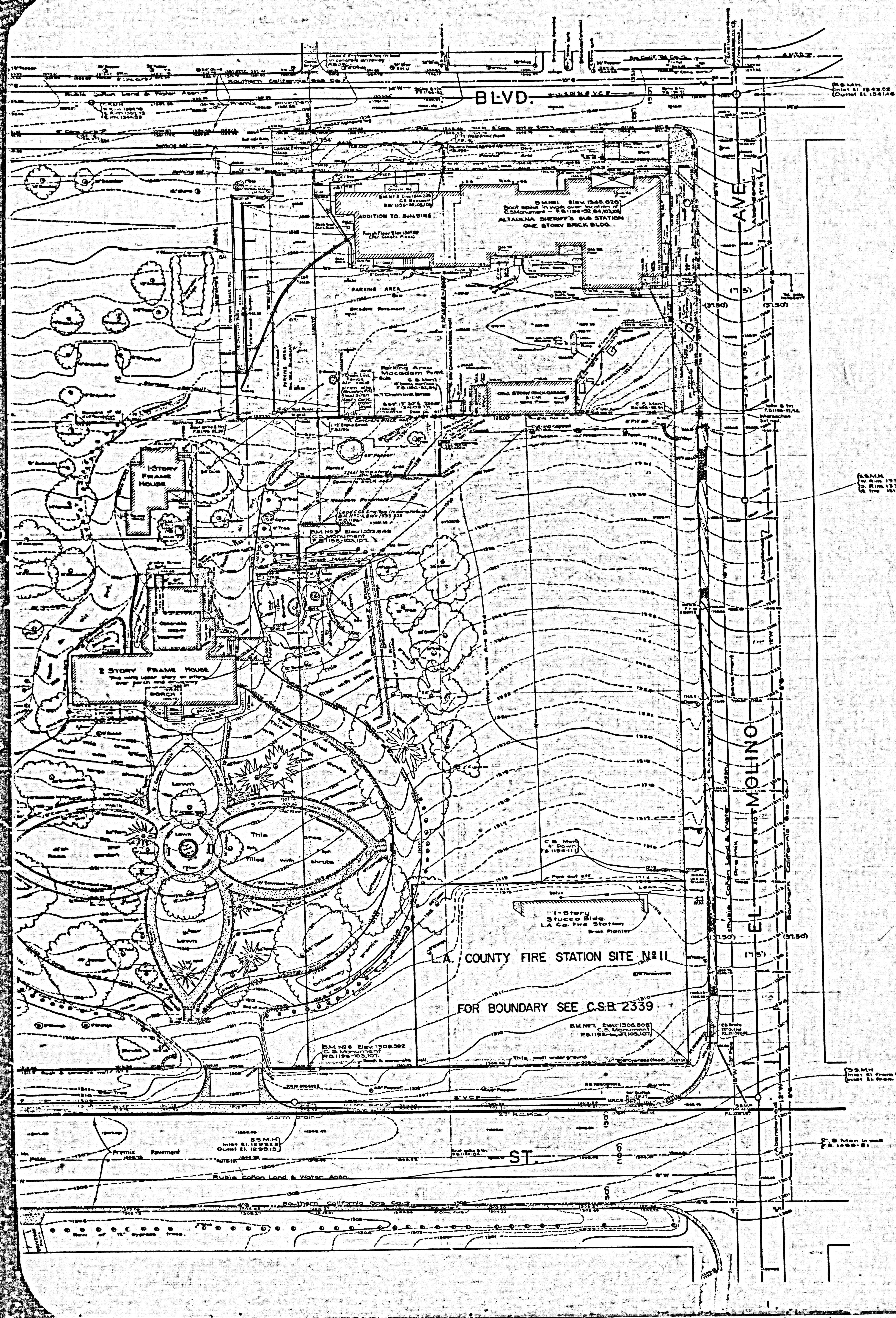
FIELD WORK BY G. W. KLEINECK  
 G. G. PORTER  
 OFFICE WORK BY R. R. McPHERSON  
 C. E. DROWN  
 CHECKED BY R. R. McPHERSON

INDEX 60 88

Distances shown in red above are not a  
 re-measurement of street E. around block 12  
 made in July 1953. See F.B. 1196-116

COUNTY SURVEYORS MAP NO. B-2072

COUNTY SURVEYORS MAP NO. B-2072



BM 11282.01  
 Elev. 11282.01  
 F.B. 1128-04, 05, 06

FOR BOUNDARY SEE C.S.B. 2339

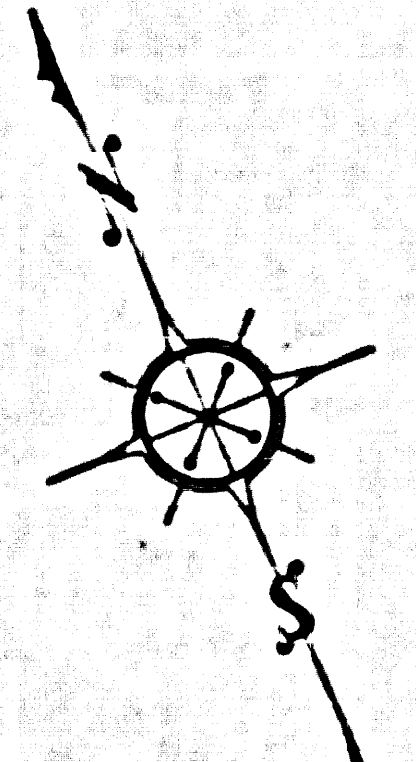
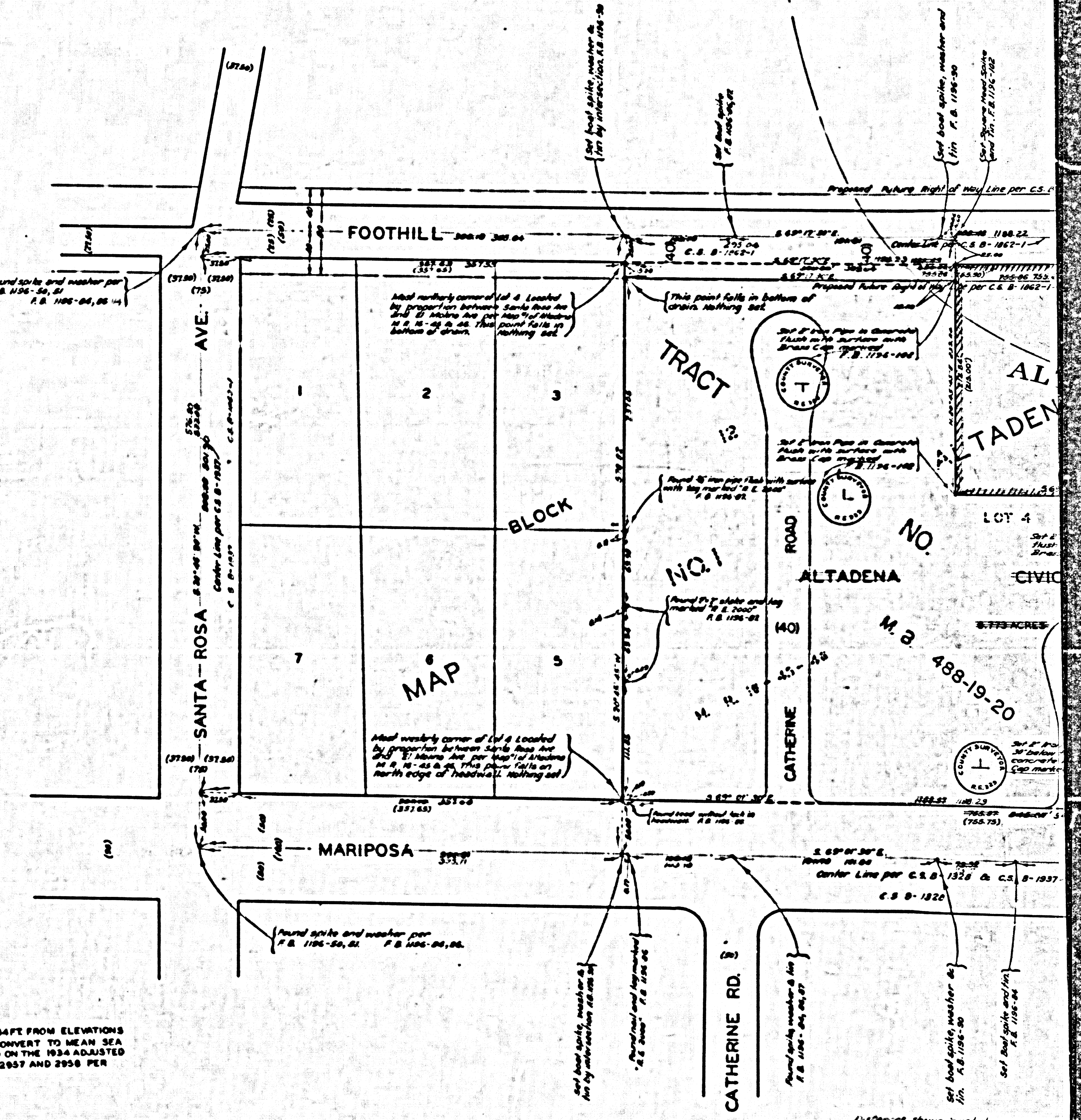
BM 11282.01  
 Elev. 11282.01  
 F.B. 1128-04, 05, 06

**MARGINAL MAP SHOWING TOPOGRAPHY**  
 SCALE: 1 INCH = 20 FT.  
 PLANE TABLE SHEETS P-240&P-247  
 FIELD WORK BY W.E. BRADEN  
 OFFICE WORK BY D.A. WHITE  
 CHECKED BY L. DETILLA

DATUM - AMBARISE/SEA LEVEL SEE NOTE  
 ELEVATIONS SHOWN HEREON ARE BASED ON B.M. MPA 29 (L.S. 768-28) THE ELEVATION OF WHICH WAS DETERMINED FROM U.S.G.S. BY PEDMONT AND MARENGO (U.S. 848) USING THE ROAD DEPARTMENT ADJUSTED ELEVATION PER ROAD DEPARTMENT S.G. 570.

Notes:  
 Topography in this corner revised per Marginal Map on P-247 Sheet P-247 and Boundary revised per Main Map, P-247 March 1950. C.S.B. 2072  
 Notes:  
 Datum of Topography revised by J.E. Fisher 11-28-55  
 Under AMBARISE (Gravity Station)  
 Revised under 24-00848-18 by T.M. Ruppert 8-58  
 Notes:  
 Elevation of the station is given by the State Dept. for 11-28-55. This is same as shown on the Main Map.

Superior Court  
 Suit for  
 Filed in  
 County of Los  
 Angeles  
 Rolf Goddard  
 Note: Suit commenced  
 1949 as shown  
 Final Judgment  
 as to Par 1-2  
 E-97-185



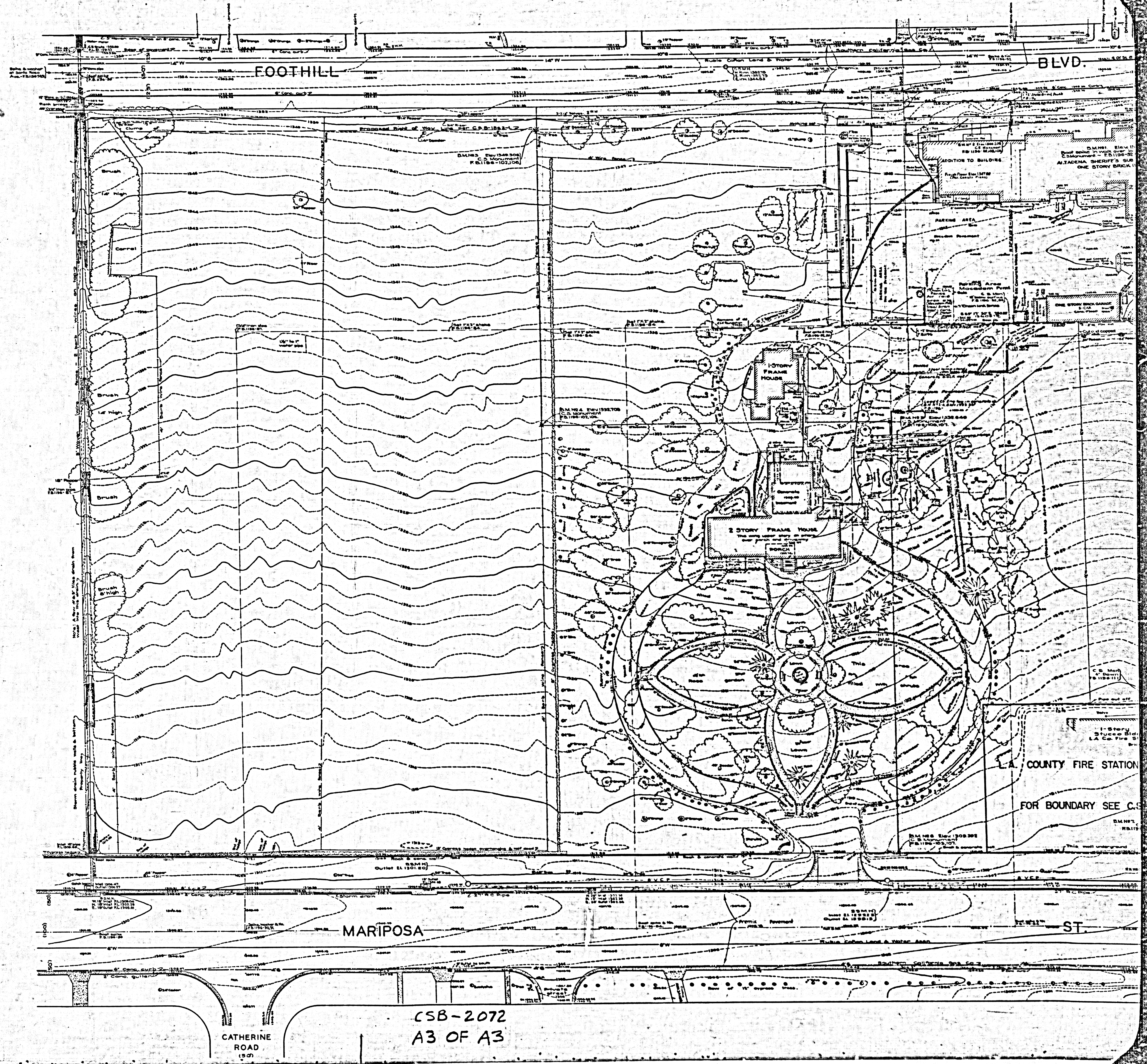
NOTE: SUBTRACT 0.44 FT. FROM ELEVATIONS SHOWN HEREON TO CONVERT TO MEAN SEA LEVEL DATUM AS DETERMINED FROM U.S.G.S. ELEVATIONS OF U.S. 2957 AND 2958 PER F.B. 1196 PAGE 95.

CSB-2072  
 A2 OF A3

Existing shown in red above are per a remeasurement of all of tract by original plat made in July 1953. See F.B. 1196(11-11)

ST05-B 04 9AM 280V2R12 YTHU00

COMPL. 280V2R12 W4 04 B-5035



CSB-2072  
A3 OF A3