

COUNTY OF LOS ANGELES
 MAP OF
DOWNEY COUNTY FIRE PROTECTION DISTRICT FIRE STATION SITE
 ENGINE CO. NO. 10
 BEING
 A PORTION OF
 RANCHO SANTA GERTRUDES
 P. 1-156-158

COUNTY SURVEYORS MAP NO. B-2078
 SCALE: 1 INCH = 50 FEET

JOB NUMBER 8495
 C. E. ARNOLD COUNTY SURVEYOR
 SURVEYED DECEMBER 1947

SURVEYED ON REQUEST OF THE COUNTY FORESTER AND FIRE WARDEN UNDER SEC. 79 ORD. 4099 BY LETTER DATED SEPT. 18 1947 AND AS AUTHORIZED BY THE BOARD OF SUPERVISORS IN THEIR ORDER OF JAN. 13, 1930.

BEARINGS ARE BASED ON THE BEARING OF DOWNEY AVE AS SHOWN ON COUNTY SURVEYORS MAP NO. B-1846

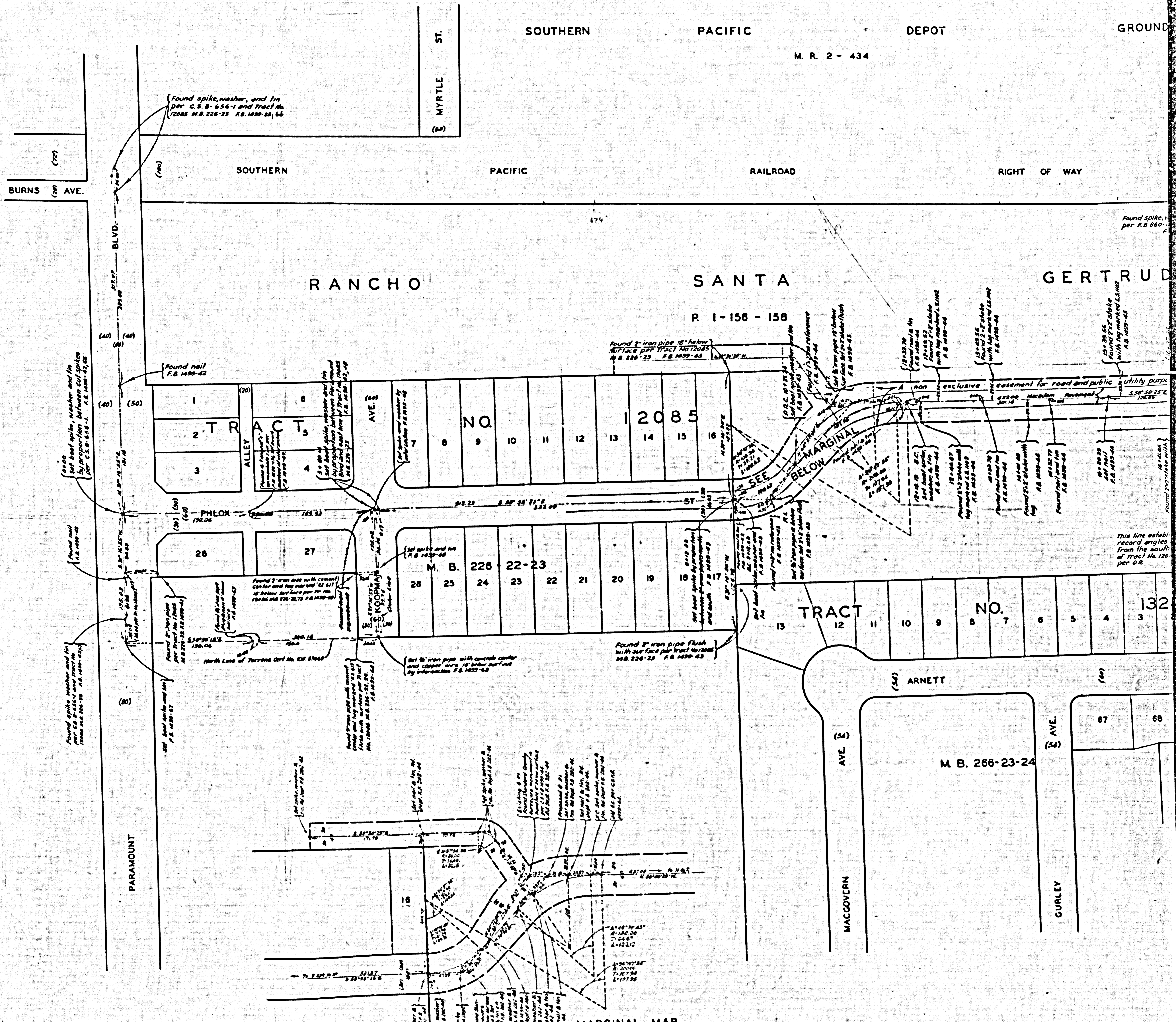
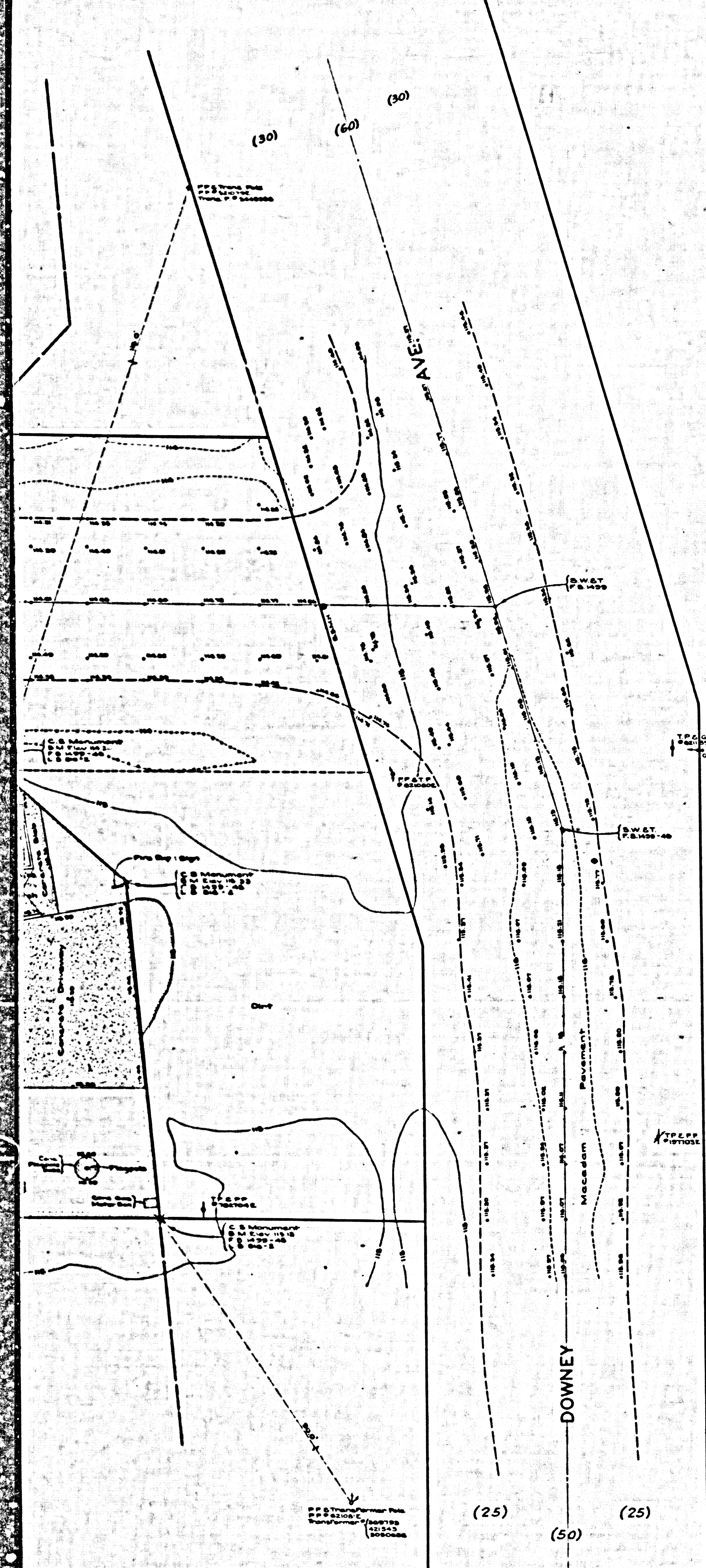
F. B. 1499-41 TO 63
 FIELD WORK BY R. L. WILLEY
 OFFICE WORK BY C. E. DROWN
 CHECKED BY A. M. DREW

NOTE: MARGINAL MAP REVISED MAY 6, 1949 BY J. GALLI

Revised 8-10-53 - C.E.D.
 Revised 3-19-56 - C.E.D.

INDEX 33

- THIS SITE ABANDONED FOR FIRE STATION PURPOSES



SOUTHERN PACIFIC DEPOT
M. R. 2 - 434

SOUTHERN PACIFIC RAILROAD RIGHT OF WAY

RANCHO SANTA GERTRUD

P. 1-156-158

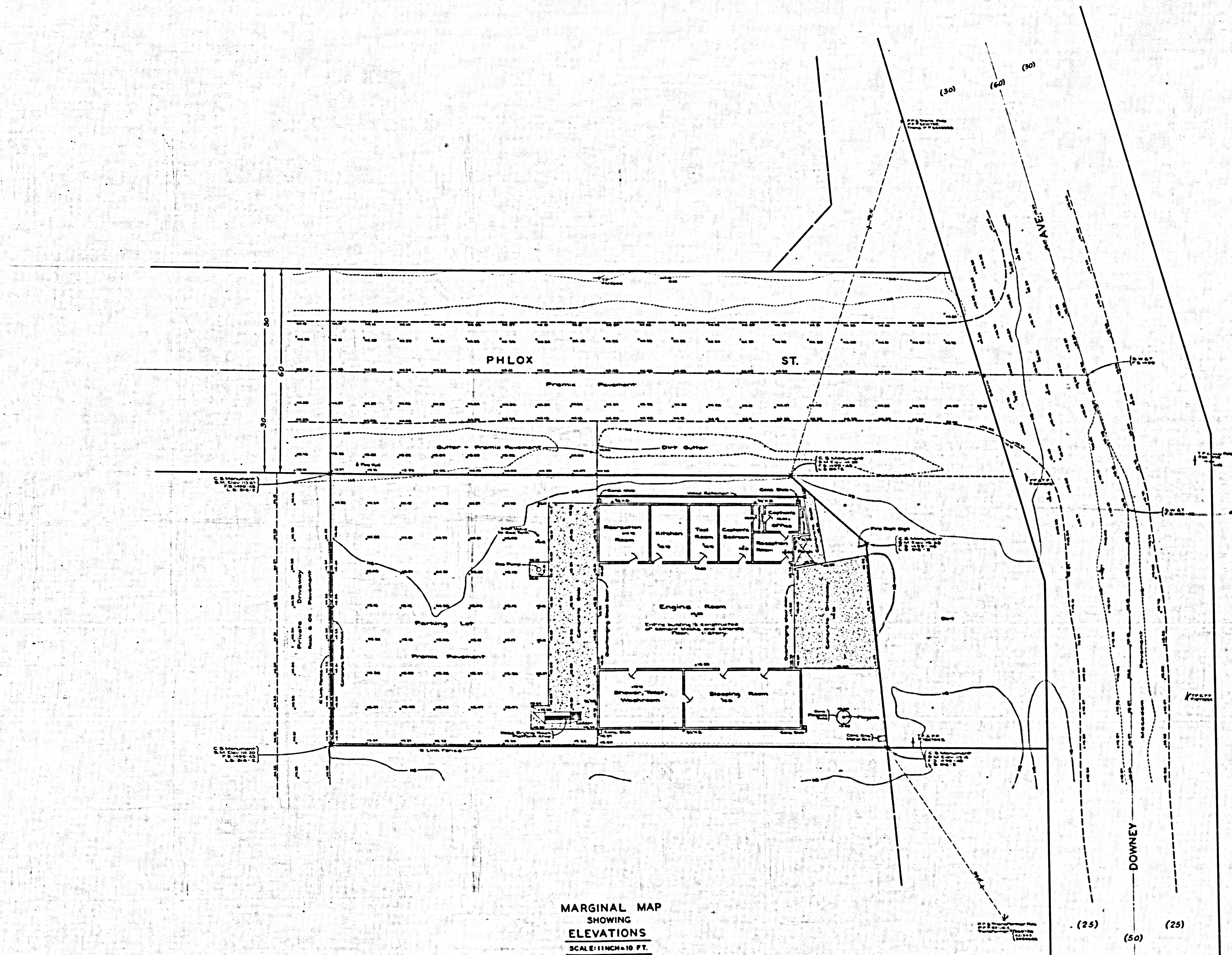
TRACT NO. 12085

M. B. 226 22-23

TRACT NO. 132

M. B. 266-23-24

MARGINAL MAP
SCALE: 1 INCH = 50 FT.



**MARGINAL MAP
SHOWING
ELEVATIONS**
SCALE: 1/4" = 10' FT.

FIELD WORK BY R. L. WILLEY
OFFICE WORK BY C. E. DROWN
CHECKED BY A. M. DREW
PLANE TABLE SHEET E-308
DATUM - MEAN SEA LEVEL
ELEVATIONS SHOWN HEREON ARE BASED ON
THE ROAD DEPT. ELEV. OF B.M. 20 D (B.M. 19)
COUNTY SURVEYORS L. S. 916-2

NOTE: FOR ORIGINAL TOPOGRAPHY SEE P.B. 1400-46

CSB-2076
A3 OF A3