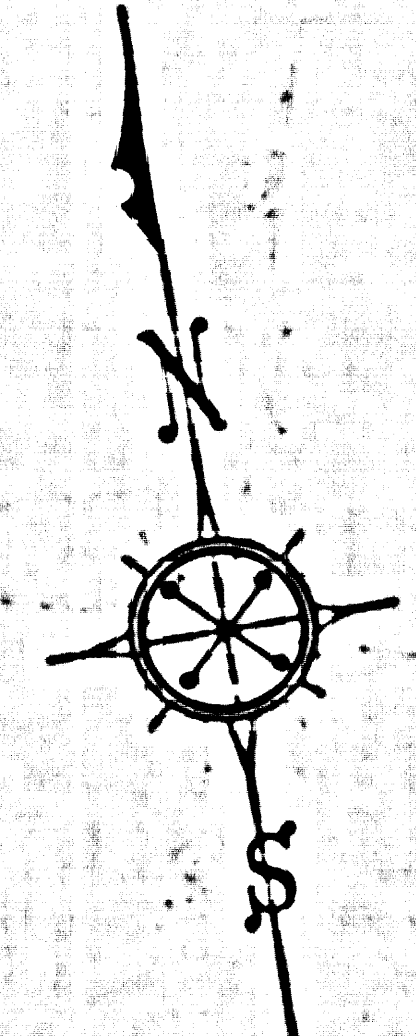
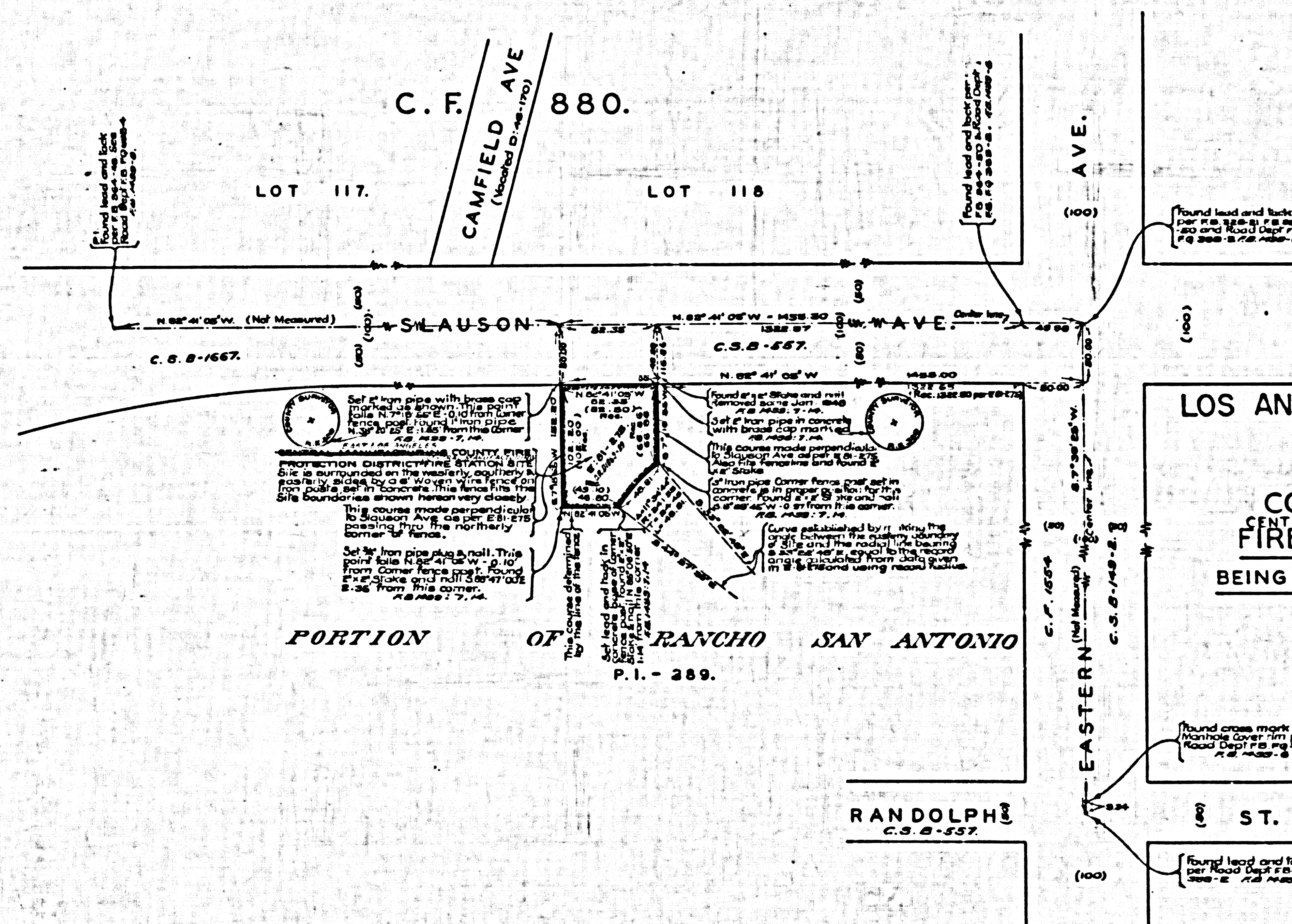


TT05-B-8-AM 2907VARE YTHUUC

TT05-B-8-AM 2907VARE YTHUUC



MAP OF
LOS ANGELES COUNTY FIRE STATION SITE N°13
 COUNTY OF LOS ANGELES
 EAST LOS ANGELES
CENTRAL MANUFACTURING
 COUNTY FIRE PROTECTION DISTRICT
 CENTRAL MANUFACTURING
FIRE STATION SITE - ENGINE CO. NO-13
 BEING A PORTION OF RANCHO SAN ANTONIO-P.1.389.
 COUNTY SURVEYORS MAP N°B-2077.
 SCALE - 1 INCH = 50 FT.

JOB NUMBER - 8483.
 C.E. ARNOLD - COUNTY SURVEYOR.
 SURVEYED DEC. 1947 TO JAN. 1948.
 SURVEYED AT THE REQUEST OF THE COUNTY
 FORESTER AND FIRE WARDEN UNDER SEC. 79
 ORD. 4099, BY LETTER DATED SEPT. 18, 1947
 BEARINGS ARE BASED ON THE BEARING OF
 SLAUSON AVE AS SHOWN ON C.S.B.-557.
 R.B. 1499-S-14.
 FIELD WORK BY R.L. WILLEY
 OFFICE WORK BY H.U.M. MIDDINGS
 CHECKED BY K.R. WISPERSON.

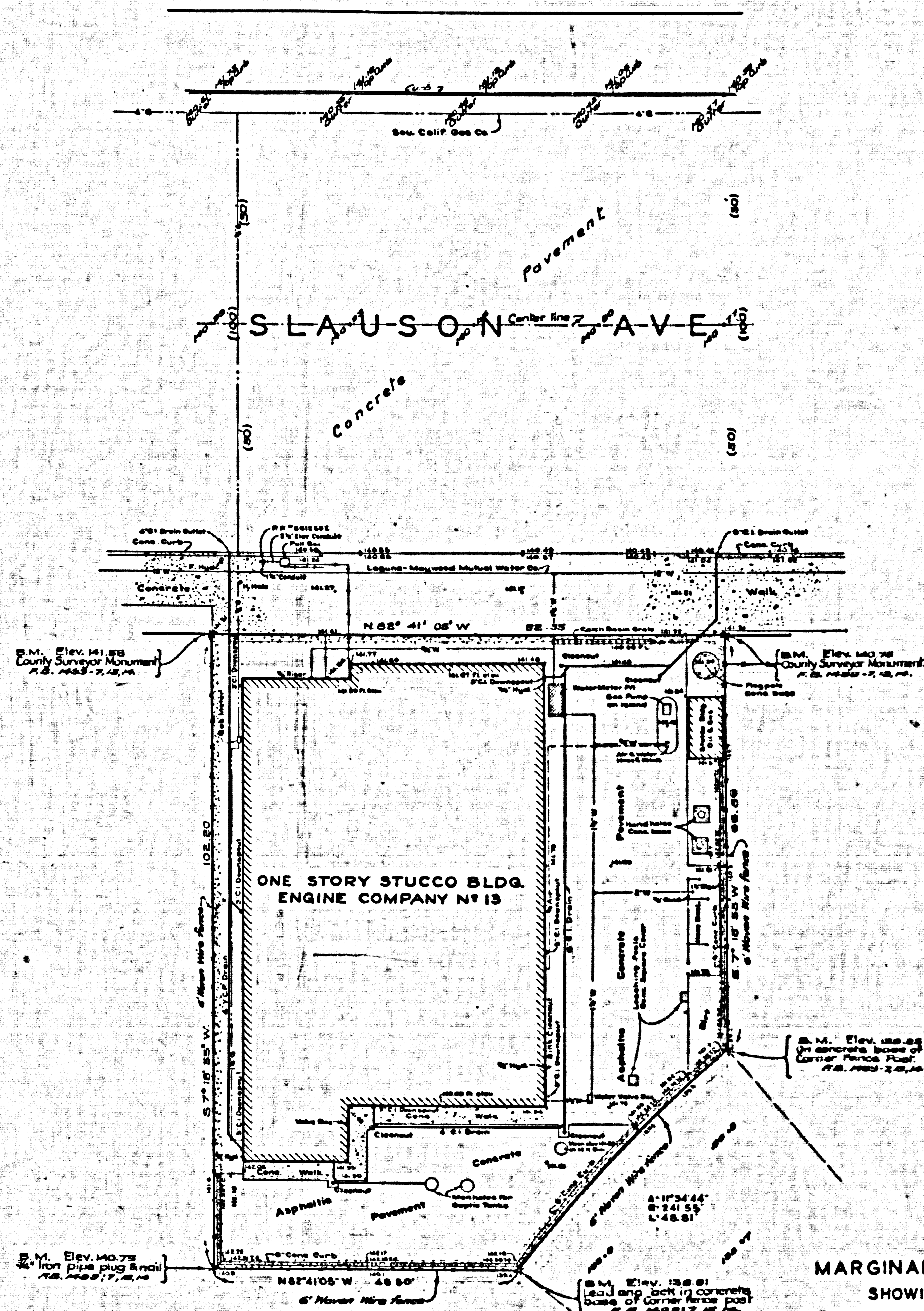
INDEX 36
 Name changed Aug. 1952 C.E.R.

MARGINAL MAP
 SHOWING
 TOPOGRAPHY
 SCALE: 1 INCH = 10 FT.
 DATUM MEAN SEA LEVEL
 ELEVATIONS SHOWN HEREON ARE BASED ON
 B.M.N.R. - 6: F.S. 964-44. THE ELEVATION
 OF WHICH WAS DETERMINED FROM THE
 U.S.C.G.S. B.M. 0-33 (U.S. 37) BASED
 ON THE U.S.C. & G.S. ADJUSTMENT OF 1934.
 Cont. elevations revised & altitudes added 4-11-50. H.M.M.
 Topography Revised 7-14-52 R.E.B.
 Revised under J.N.O. 284
 From P.T. 314 5.371
 Revisions Checked W.E.

CSB-2077
 A1 OF A2

COMPLA ENGINEERS MAP NO. B-5011

COMPLA ENGINEERS MAP NO. B-5011



MARGINAL MAP
SHOWING
TOPOGRAPHY
SCALE: 1 INCH = 10 FT.
DATUM MEAN SEA LEVEL
ELEVATIONS SHOWN HEREON ARE BASED ON
S.M.N.E.R. - 0 - 18, 964-44. THE ELEVATION
OF WHICH WAS DETERMINED FROM THE
U.S.C. & G.S. - S.M.O - 23 (U.S. 337) BASED
ON THE U.S.C. & G.S. ADJUSTMENT OF 1934.

Topography revised & stipples added 4-11-52, same.
Topography revised 7-14-52 R.E.S.
Revised under J.N.O. 284
From P.T. 341 E. 37.1
Revisions Checked W.E.

CSB-2077
A2 OF A2

