

INDEX MAP
SCALE - 1/4 INCH = 600 FT.

(INDEX 57)
(INDEX 50)

COUNTY OF LOS ANGELES -
MAP OF
SANTA MARIA ROAD
FROM
MULHOLLAND DRIVE
TO THE SOUTH LINE OF THE
NORTH HALF OF SEC. 32, T. 1 N., R. 16 W.
COUNTY SURVEYORS MAP N° 8-2083.
SCALE - 1 INCH = 100 FT.

JOB NUMBER - 8469

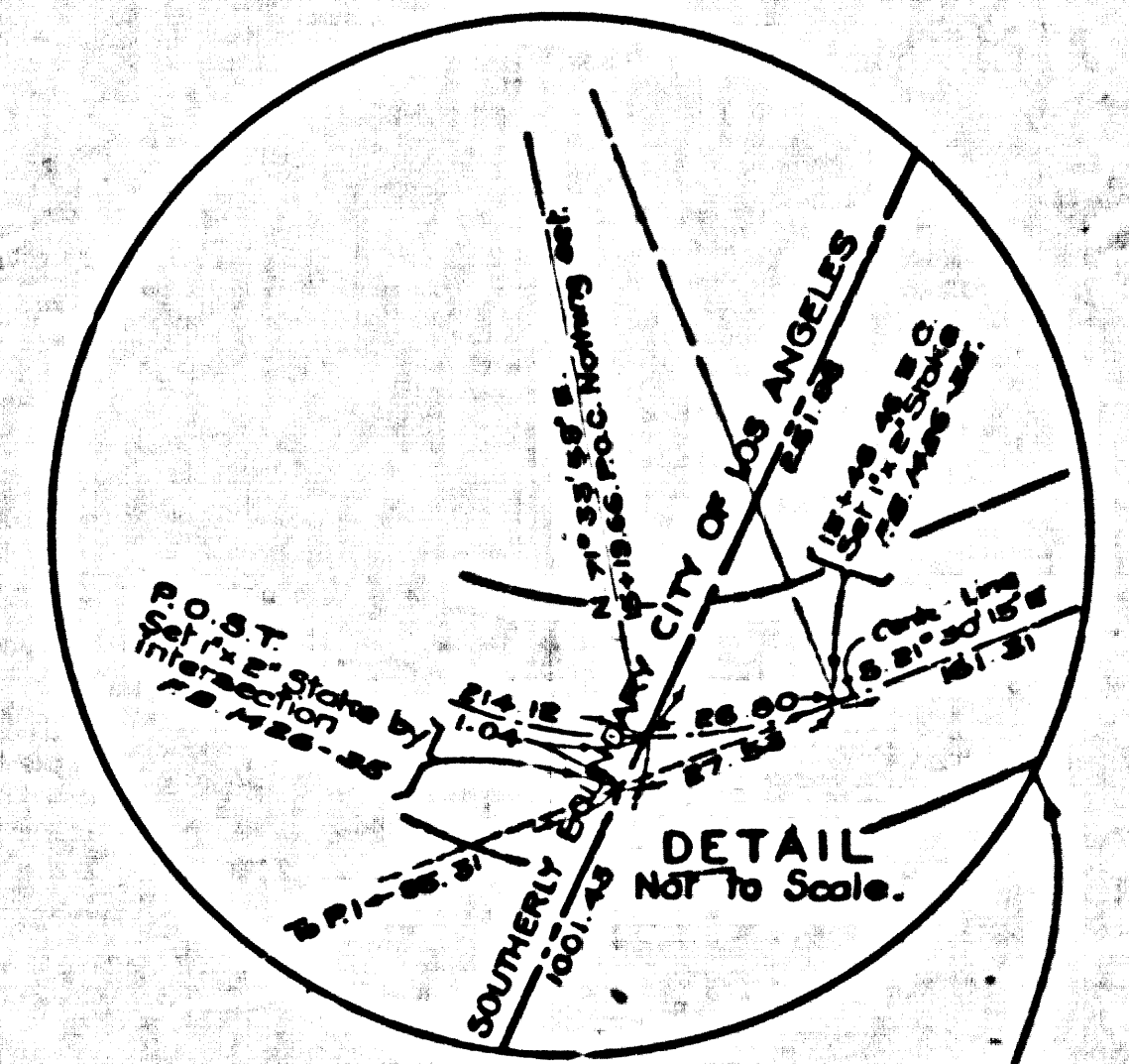
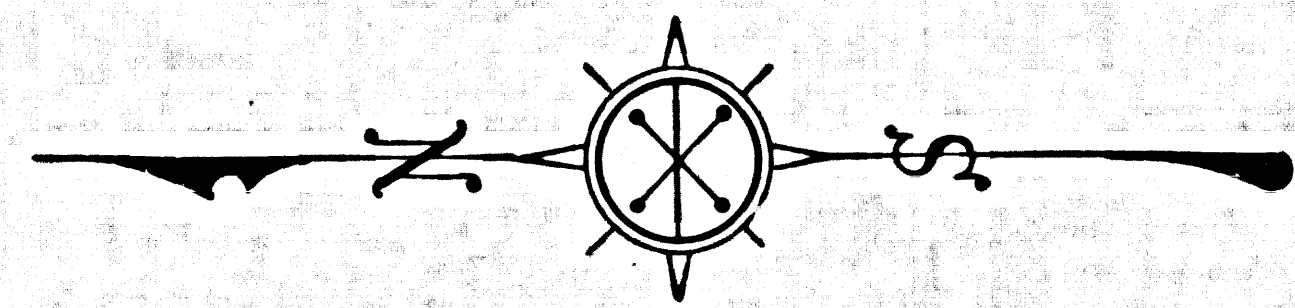
C. E. ARNOLD - COUNTY SURVEYOR
SURVEYED AUG. 1947 - FEB. 1948.
SURVEYED UNDER INSTRUCTIONS OF THE
BOARD OF SUPERVISORS PER ORDER DATED
JULY 15 - 1947.
BEARINGS ARE BASED ON THE BEARING OF
THE SOUTHERLY BOUNDARY OF RANCHO SAN
FERNANDO AS SHOWN ON C.S.B-1013-2.
P.B. 1426-B-87.

FIELD WORK BY G.M. NICHOLS.
OFFICE WORK BY M.H. MCGINNIS.
CHECKED BY H.R. SPENGLER.

CSB-2083
A1 OF A2

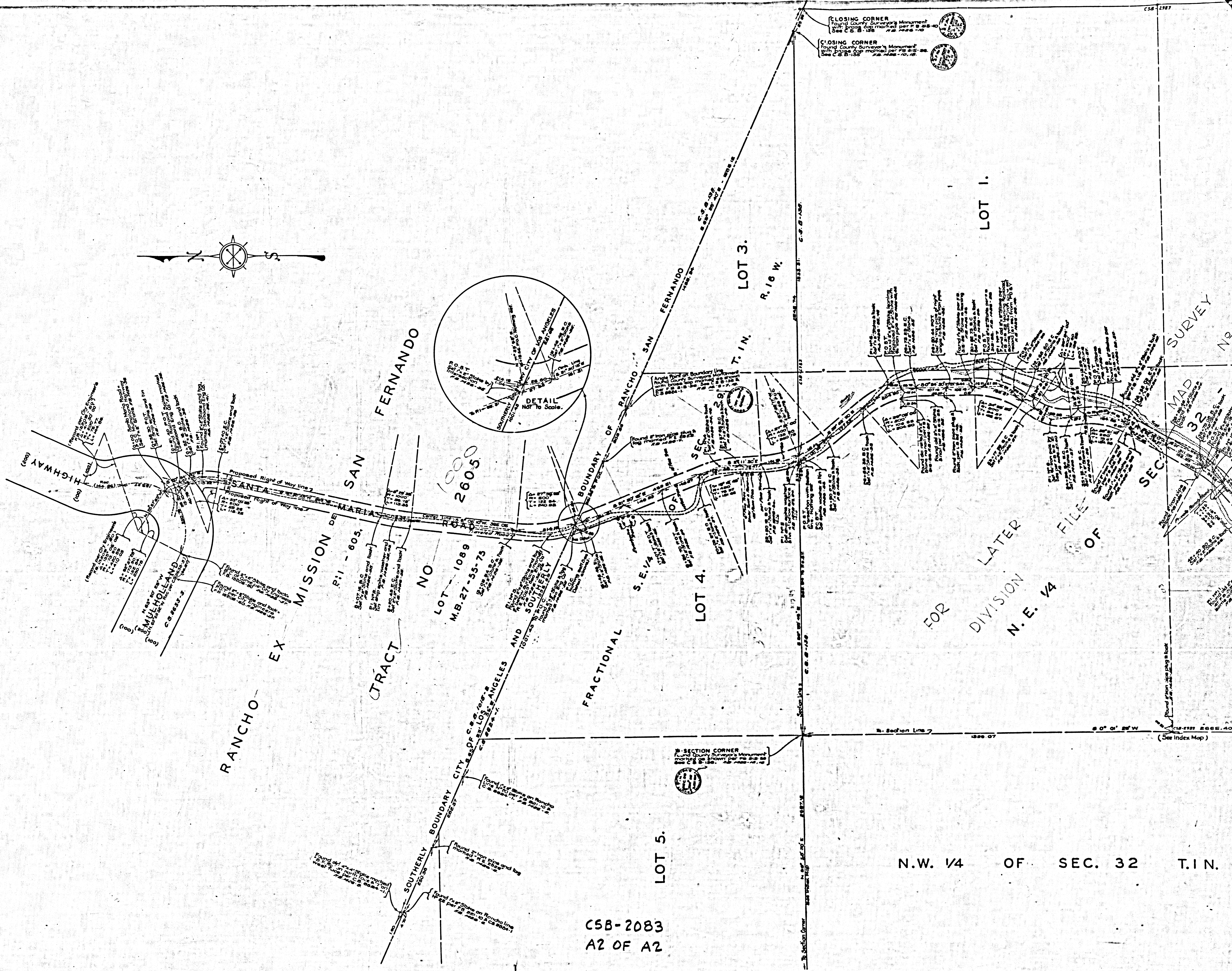
COMPLIA 218VEXAK2 EAM NO B-5783

8805-B OM 9AM 2ROVEVRUE YTVUOD



CLOSING CORNER
Found County Surveyor's Monument
with bronze cap marked per 78-28-28
See C.S.B. 136 7/2 1/2-10-12

CLOSING CORNER
Found County Surveyor's Monument
with bronze cap marked per 78-28-28
See C.S.B. 136 7/2 1/2-10-12



FOR LATER
DIVISION
N. E. 1/4
FILE
OF

N.W. 1/4 OF SEC. 32 T.1N.

CSB-2083
A2 OF A2

(See Index Map)