

(Index 85)

COUNTY OF LOS ANGELES
 MAP OF
ALTADENA FIRE PROTECTION DISTRICT
FIRE STATION SITE
 ENGINE CO. NO. 11
 BEING
 LOT 4 TRACT NO. 7832 M.B. 85-67
 COUNTY SURVEYORS MAP NQB-2084
 SCALE: 1 INCH = 30 FEET

JOB NUMBER 8490

C. E. ARNOLD COUNTY SURVEYOR
 SURVEYED JAN 26 1948

SURVEYED ON REQUEST OF THE COUNTY
 FORESTER & FIRE WARDEN UNDER SEC. 79,
 ORD. 4099 BY LETTER DATED SEPT. 8, 1947
 AND AS AUTHORIZED BY THE BOARD OF
 SUPERVISORS IN THEIR ORDER OF JAN. 13, 1930.

BEARINGS ARE BASED ON THE BEARING
 OF FOOTHILL BLVD. AS SHOWN ON C. S.
 B-1862-1

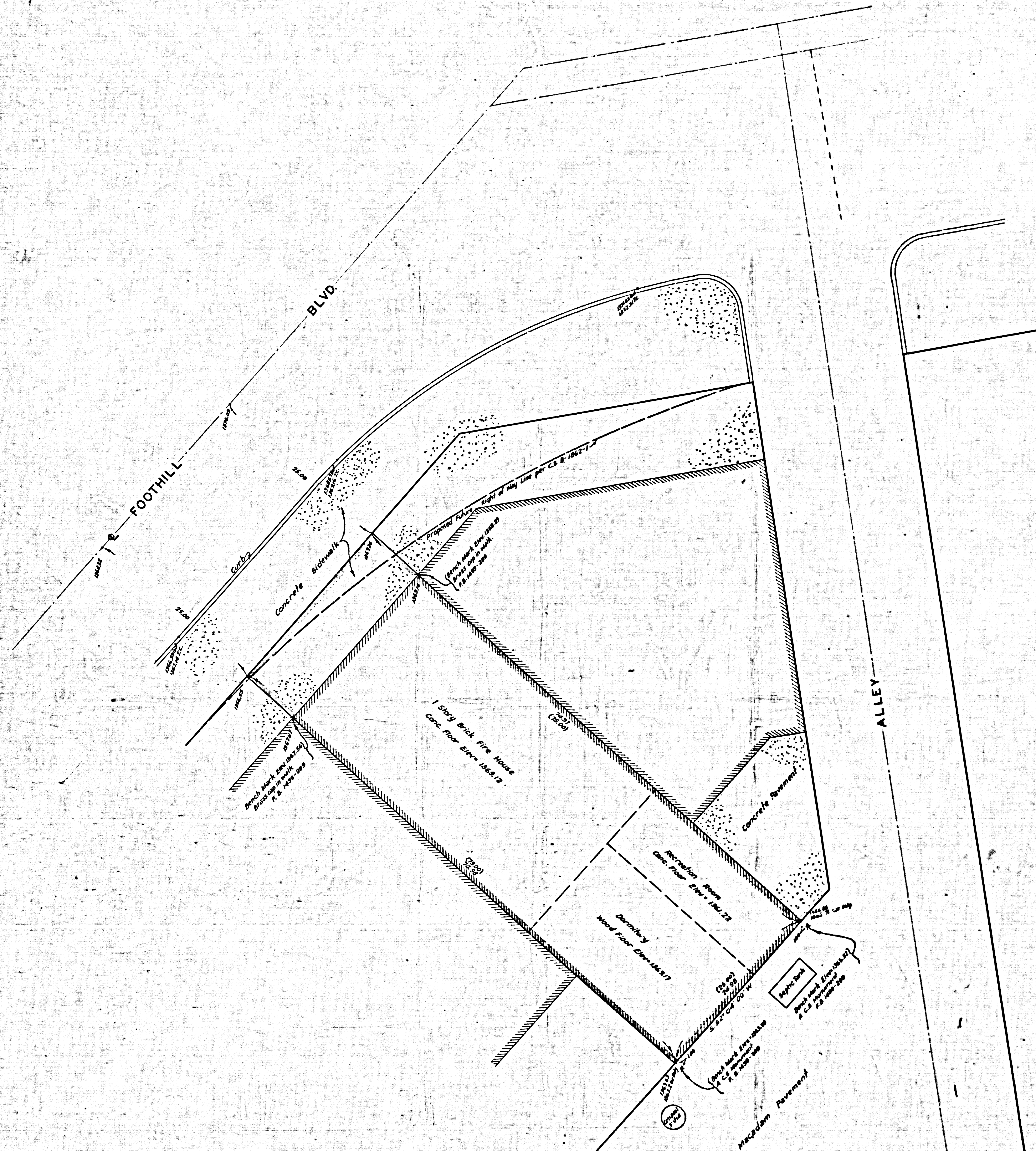
F. B. 1499-201-209

FIELD WORK BY R. L. WILLEY
 OFFICE WORK BY C. E. BROWN
 CHECKED BY R. R. M'PHERSON

INDEX 85

THIS SITE ABANDONED FOR FIRE STATION PURPOSES
 FOR CURRENT FIRE STATION SITE NO. 11 SEE C.S.B. 2339

CSB-2084
 A1 OF A2



MARGINAL MAP
SHOWING
IMPROVEMENTS AND ELEVATIONS
SCALE: 1 INCH = 5 FEET
FIELD WORK BY R. L. WILLEY
OFFICE WORK BY C. E. DROWN
CHECKED BY R. R. PATERSON
DATUM - MEAN SEA LEVEL
ELEVATIONS SHOWN HEREON ARE BASED ON B.M.
A 24 (I. B. 768-25) THE ELEVATION OF WHICH WAS
DETERMINED FROM THE ROAD DEPT. B.M. (I. B. C. 460-2)

CSB-2084
A2 OF A2

