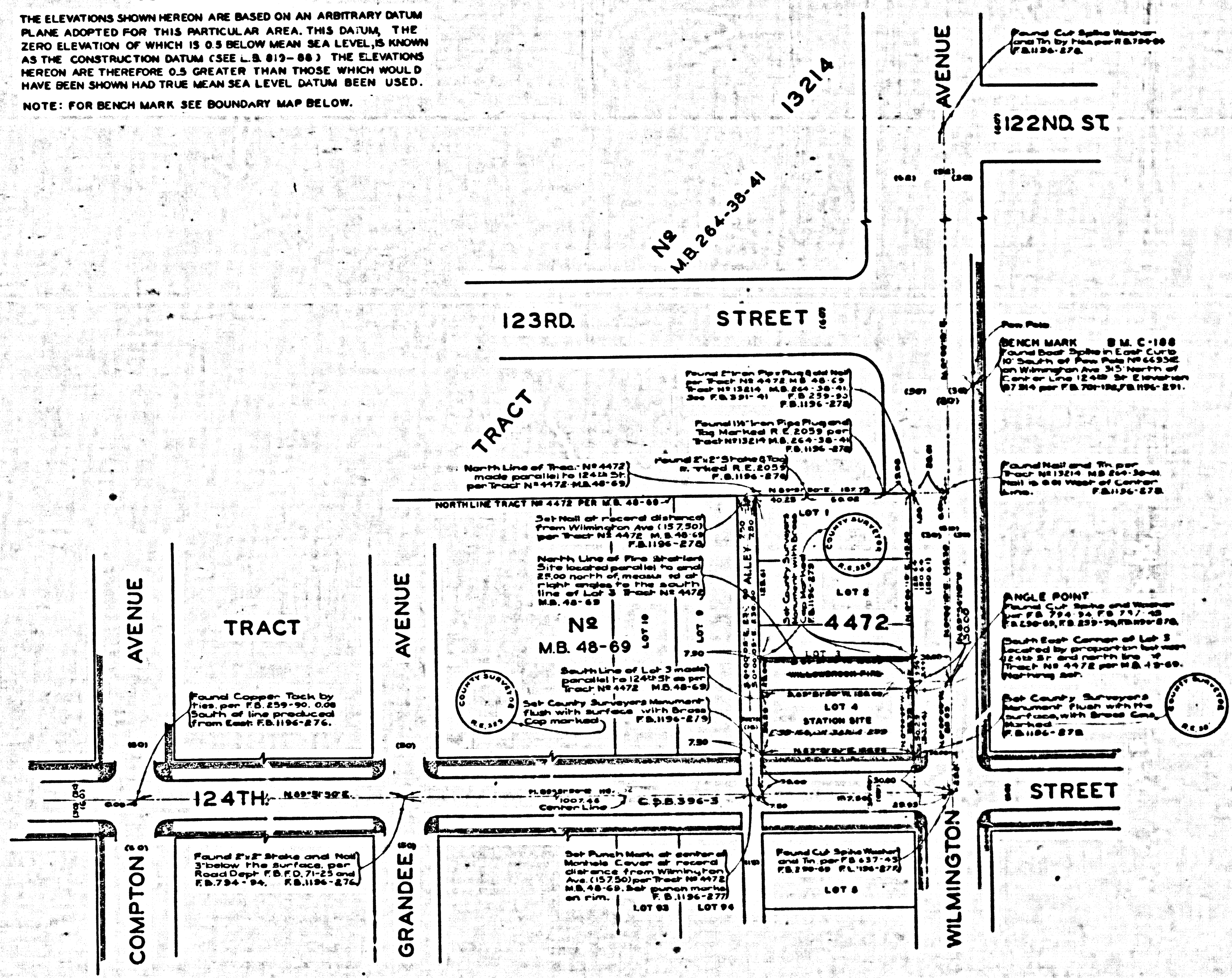


MARGINAL MAP
SHOWING
TOPOGRAPHY
SCALE: 1 INCH = 10 FT.

THE ELEVATIONS SHOWN HEREON ARE BASED ON AN ARBITRARY DATUM PLANE ADOPTED FOR THIS PARTICULAR AREA. THIS DATUM, THE ZERO ELEVATION OF WHICH IS 0.5 BELOW MEAN SEA LEVEL, IS KNOWN AS THE CONSTRUCTION DATUM (SEE L.S. 819-88). THE ELEVATIONS HEREON ARE THEREFORE 0.5 GREATER THAN THOSE WHICH WOULD HAVE BEEN SHOWN HAD TRUE MEAN SEA LEVEL DATUM BEEN USED.
NOTE: FOR BENCH MARK SEE BOUNDARY MAP BELOW.



MAP OF
LOS ANGELES COUNTY FIRE STATION SITE No 41
COUNTY OF LOS ANGELES
CONSOLIDATED WITH
WILLOWBROOK COUNTY FIRE PROTECTION DISTRICT
FIRE STATION SITE-ENGINE CO No 41
BEING LOT 4. AND SOUTH 25 FT. OF LOT 3
OF TRACT No 4472, M.B. 48-69.
COUNTY SURVEYORS MAP No B-2088
SCALE: 1 INCH = 50 FT.

JOB NUMBER 8484
C. E. ARNOLD - COUNTY SURVEYOR
SURVEYED JANUARY 1948

SURVEYED ON REQUEST OF THE COUNTY FORESTER AND
FIRE WARDEN UNDER SEC. 79 ORD. 4099 BY LETTER
DATED SEPT. 18, 1947 AND AS AUTHORIZED BY THE
BOARD OF SUPERVISORS IN THEIR ORDER OF JAN. 13, 1930

BEARINGS ARE BASED ON THE BEARING OF
124TH ST. PER C.S. B-398-3.

E 1196-275-281
FIELD WORK BY: H.W. GUNDERSON
OFFICE WORK BY: H.M. HIGGINS
L.C. WILSON
CHECKED BY: A.H. DREW

Photography Secured By: Carl & Arthur White

CSB-2088
A1 OF A1

INDEX 26