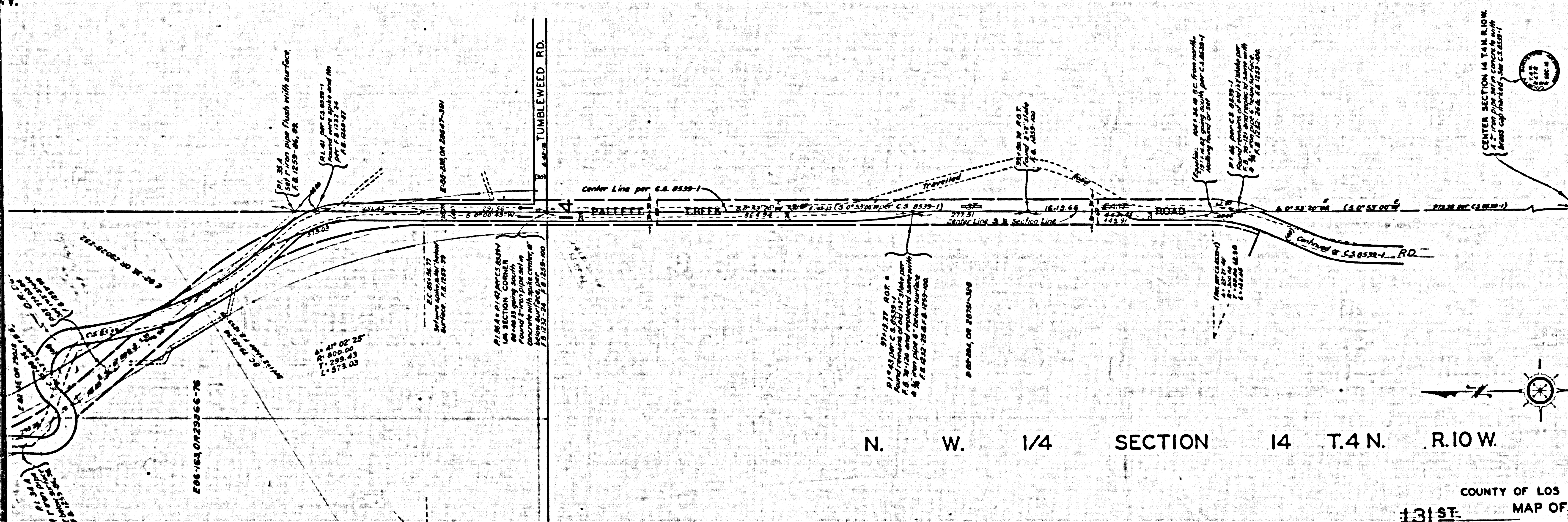


N. E. 1/4 SECTION 14 T. 4 N. R. 10 W.

N. W. 1/4 SECTION 14 T. 4 N. R. 10 W.



COUNTY OF LOS ANGELES
 MAP OF STREET EAST
LONGVIEW ROAD

FROM NORTH LINE SECTION 35, T. 5 N. R. 10 W.
 TO PALLETT CREEK ROAD
 AND

PALLETT CREEK ROAD
 FROM EAST LINE OF WEST 1/2 OF SECTION 2, T. 4 N. R. 10 W.
 TO CENTER OF SECTION 14, T. 4 N. R. 10 W.

COUNTY SURVEYORS MAP NO. B-2090
 SCALE: 1 INCH = 100 FT.

JOB NUMBER 7349

C. E. ARNOLD COUNTY SURVEYOR
 SURVEYED JANUARY TO OCTOBER 1947

SURVEYED ON REQUEST OF THE ROAD COM-
 MISSIONER UNDER SEC. 79, ORD. 4099, BY
 LETTER DATED MAY 23, 1946.

BEARINGS ARE BASED ON THE BEARING OF
 THE EAST LINE OF THE WEST HALF OF
 SECTION 35, T. 5 N. R. 10 W., AS SHOWN ON C.S. 8770

F. B. 1250-7700 AND 77 TO 100

FIELD WORK BY E. A. ROSECRANS
 OFFICE WORK BY C. E. DROWN
 CHECKED BY R. R. M'PHERSON

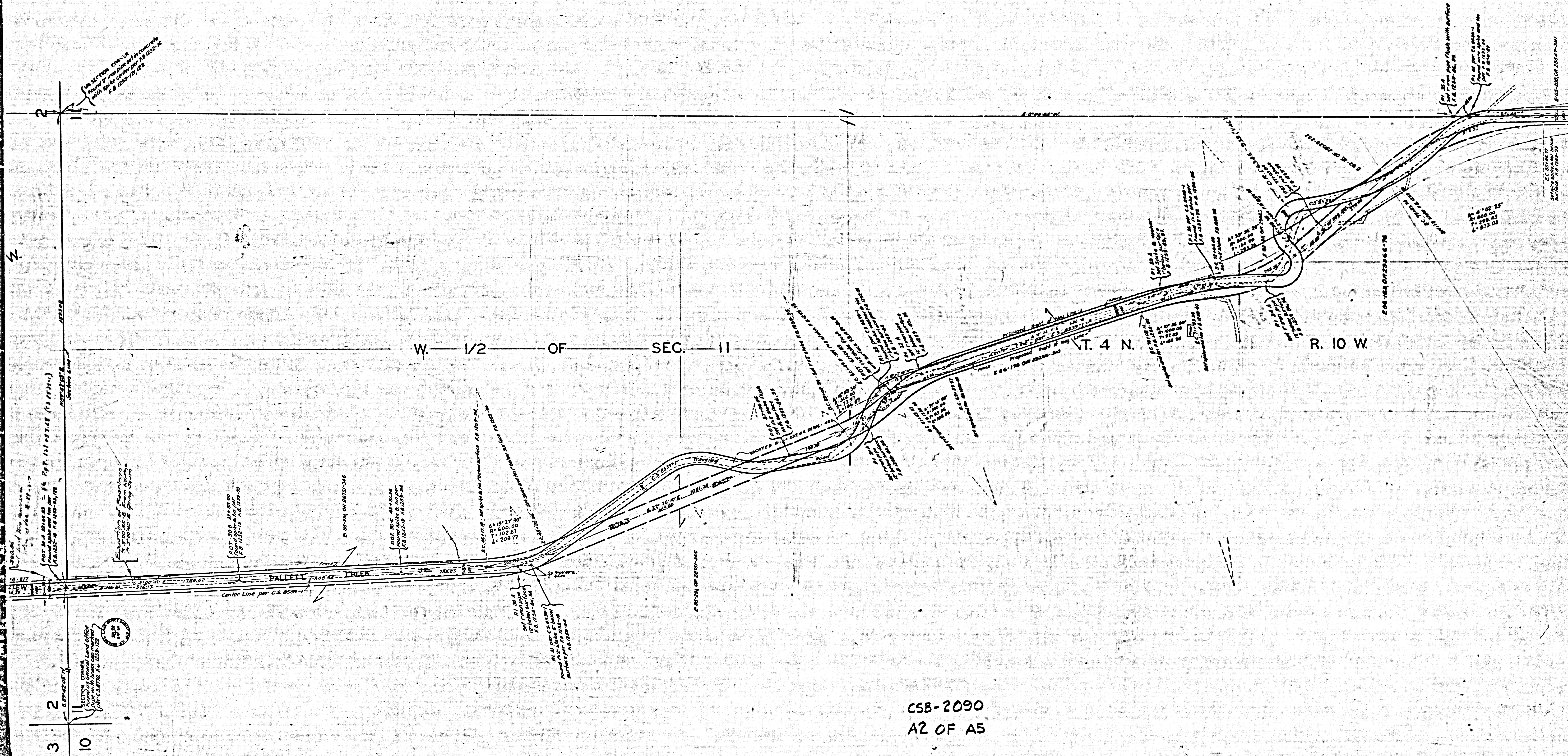
INDEX - PG.
 INDEX - P. 2

Revised on Amendment 1, 1949 - C.E.S.
 Approved on January 7, 1950 - D.J.S.
 Approved on Amendment 2, 1950 - C.E.S.
 Revised Jan. 29, 1954 C.E.S.
 Revised Sept. 7, 1956 - F.S.B.
 Approved on Amendment 3, 1956 - C.E.S.
 Approved on Amendment 4, 1956 - C.E.S.
 Approved on Amendment 5, 1956 - C.E.S.
 Approved on Amendment 6, 1956 - C.E.S.
 Approved on Amendment 7, 1956 - C.E.S.
 Approved on Amendment 8, 1956 - C.E.S.
 Approved on Amendment 9, 1956 - C.E.S.
 Approved on Amendment 10, 1956 - C.E.S.

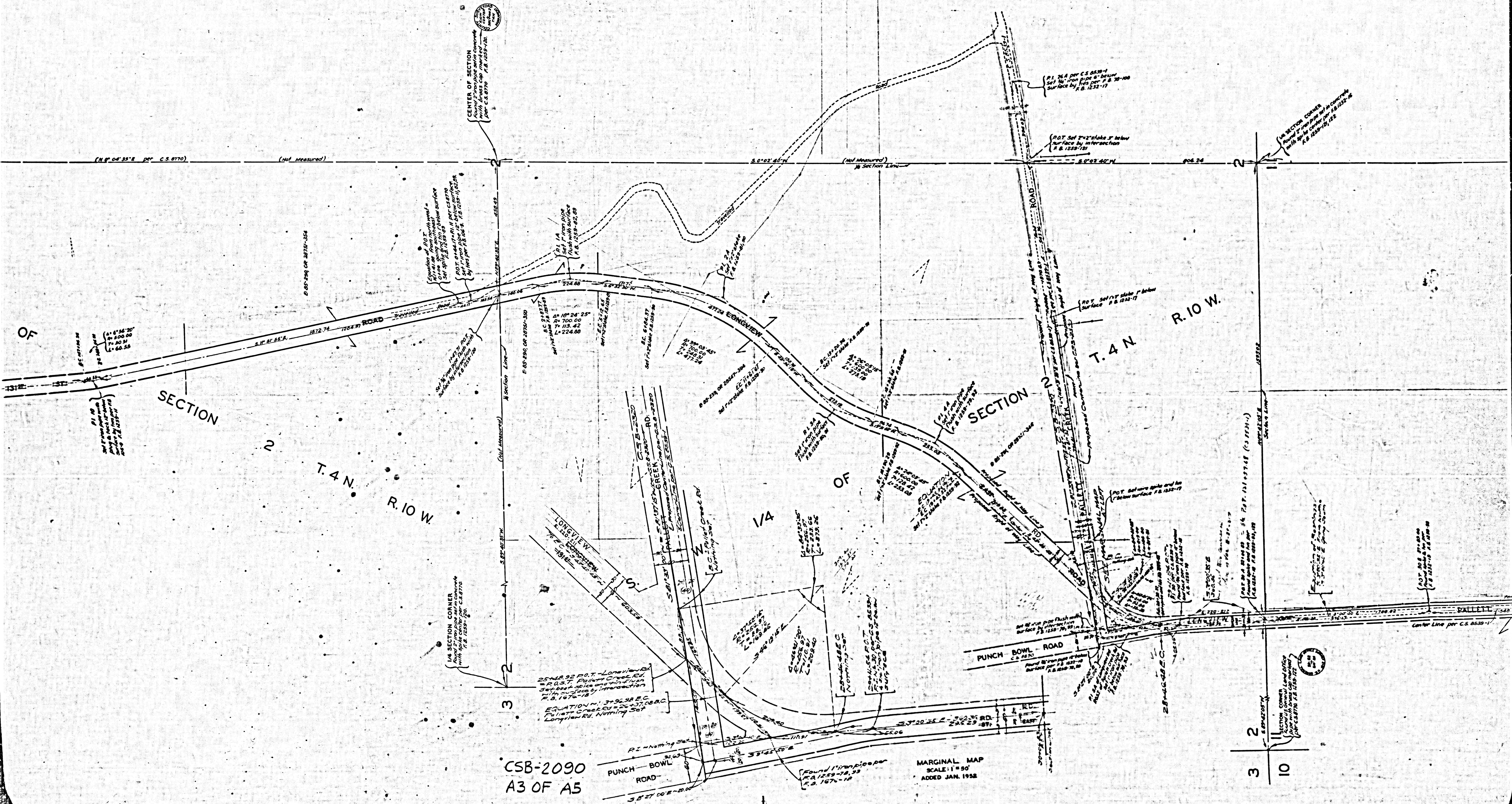
CSB-2090
 AI OF A5

E. 1/2 OF SEC. II T. 4 N. R. 10 W.

W. 1/2 OF SEC. II T. 4 N. R. 10 W.



CSB-2090
A2 OF A5



CENTER OF SECTION
 Surveyed from
 with brass cap marked
 per C.S. 8170 R.B. 1253-17

(N.P. 04° 35' E per C.S. 8170) (Not Measured)

(Not Measured) Section Line

2

3

P.O.T. Set 1/2" stake 2' below
 surface by intersection
 P.B. 1253-17

2

3

10

SECTION CORNER
 Surveyed from
 with brass cap marked
 per C.S. 8170 R.B. 1253-17

CSB-2090
 A3 OF A5

MARGINAL MAP
 SCALE: 1" = 90'
 ADDED JAN. 1952

25 MAR 92 P.O.T. - LONVIEW RD.
 = P.O.T. - PUNCH BOWL RD.
 Set by intersection of
 P.B. 1253-17
 EQUATION: $37.9638 \pm C$
 PUNCH BOWL RD. - N. 26° 37' 00" E
 L. 1076.78

Found 1" iron pipe
 P.B. 1253-17, 92
 P.B. 1676-10

SECTION CORNER
 Surveyed from
 with brass cap marked
 per C.S. 8170 R.B. 1253-17

2

3

10

T. 5 N. R. 10 W.

CENTER OF SECTION
CONCORDED WITH AREA CAP
(MARKED) 1949

R. 10 W.

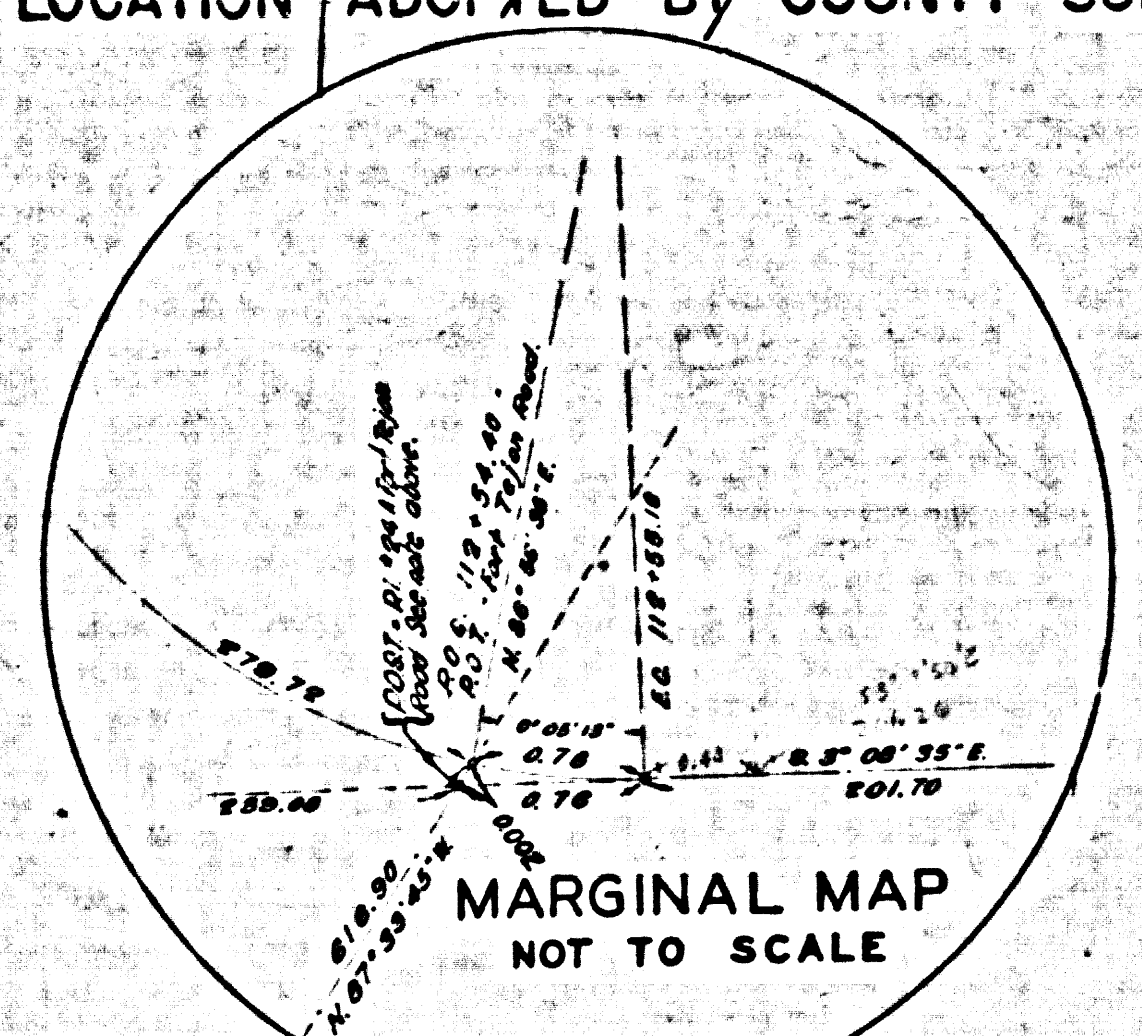
T. 5 N.

T. 5 N. R. 10 W.

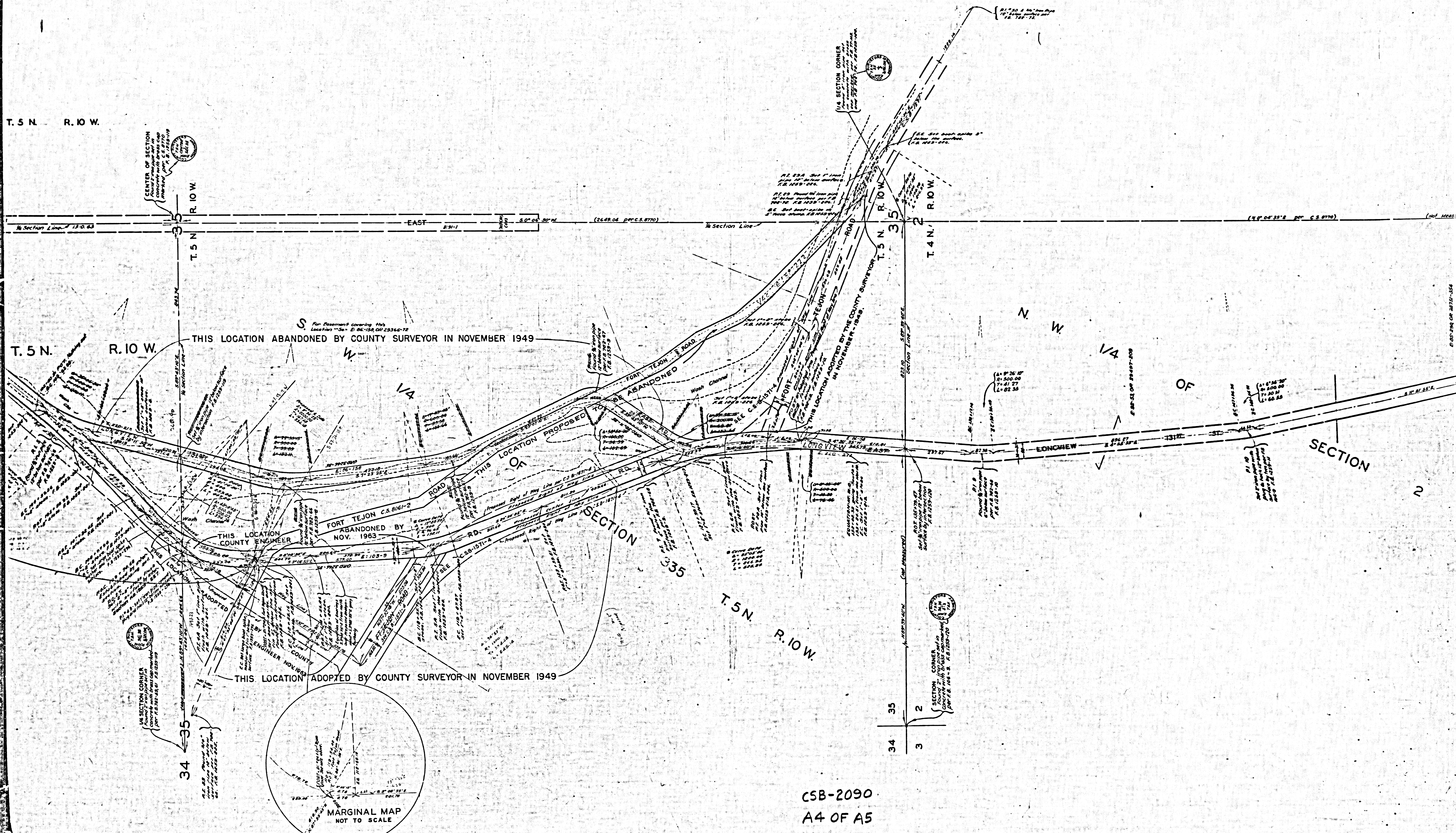
THIS LOCATION ABANDONED BY COUNTY SURVEYOR IN NOVEMBER 1949

THIS LOCATION ADOPTED BY COUNTY SURVEYOR IN NOVEMBER 1949

THIS LOCATION ADOPTED BY COUNTY SURVEYOR IN NOVEMBER 1949

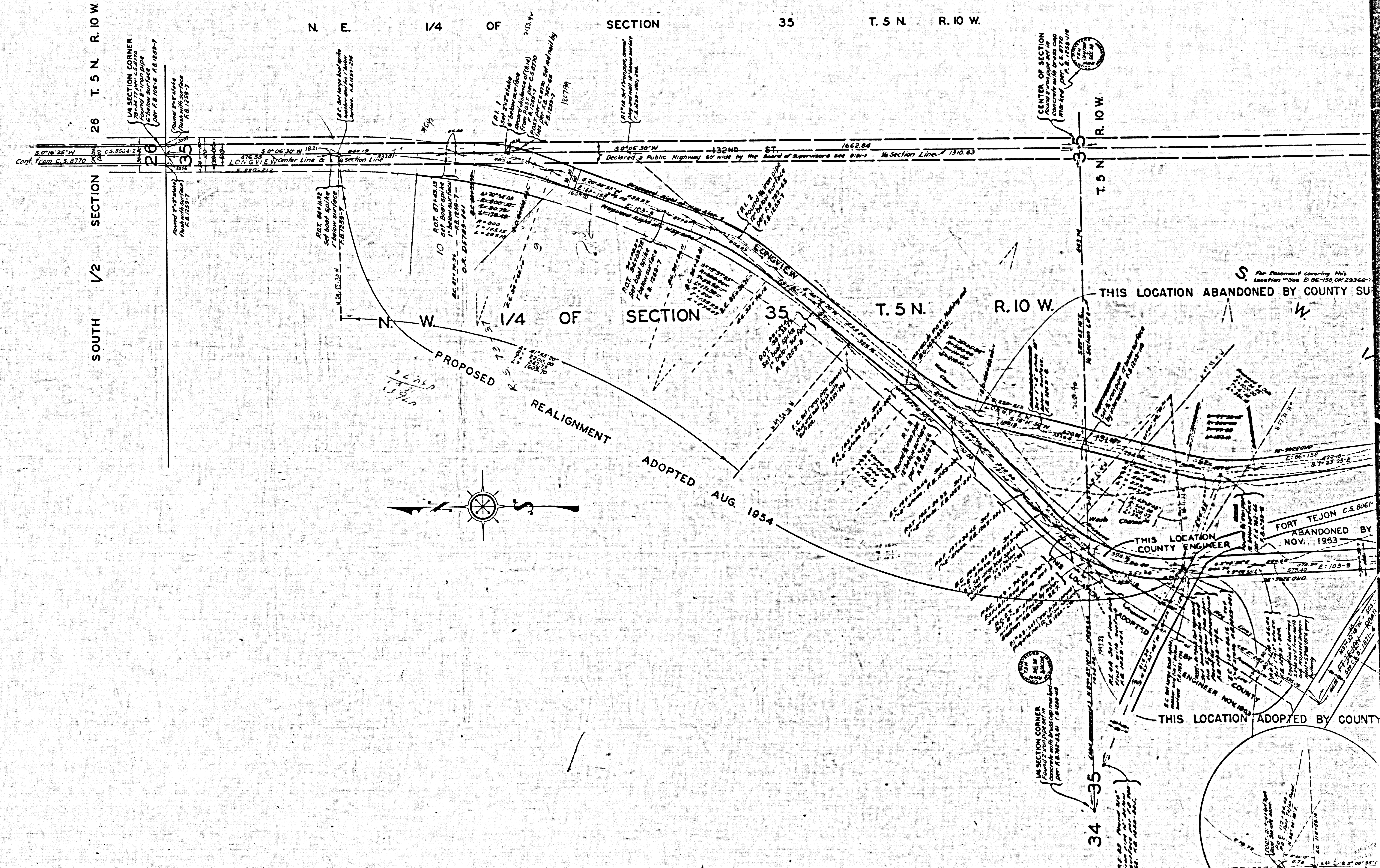


CSB-2090
A4 OF A5



03-B ON 5AM 280329R2 17AUC03

COUNTY ENGINEER'S MAP NO B-5080



CSB-2090
A5 OF A5