

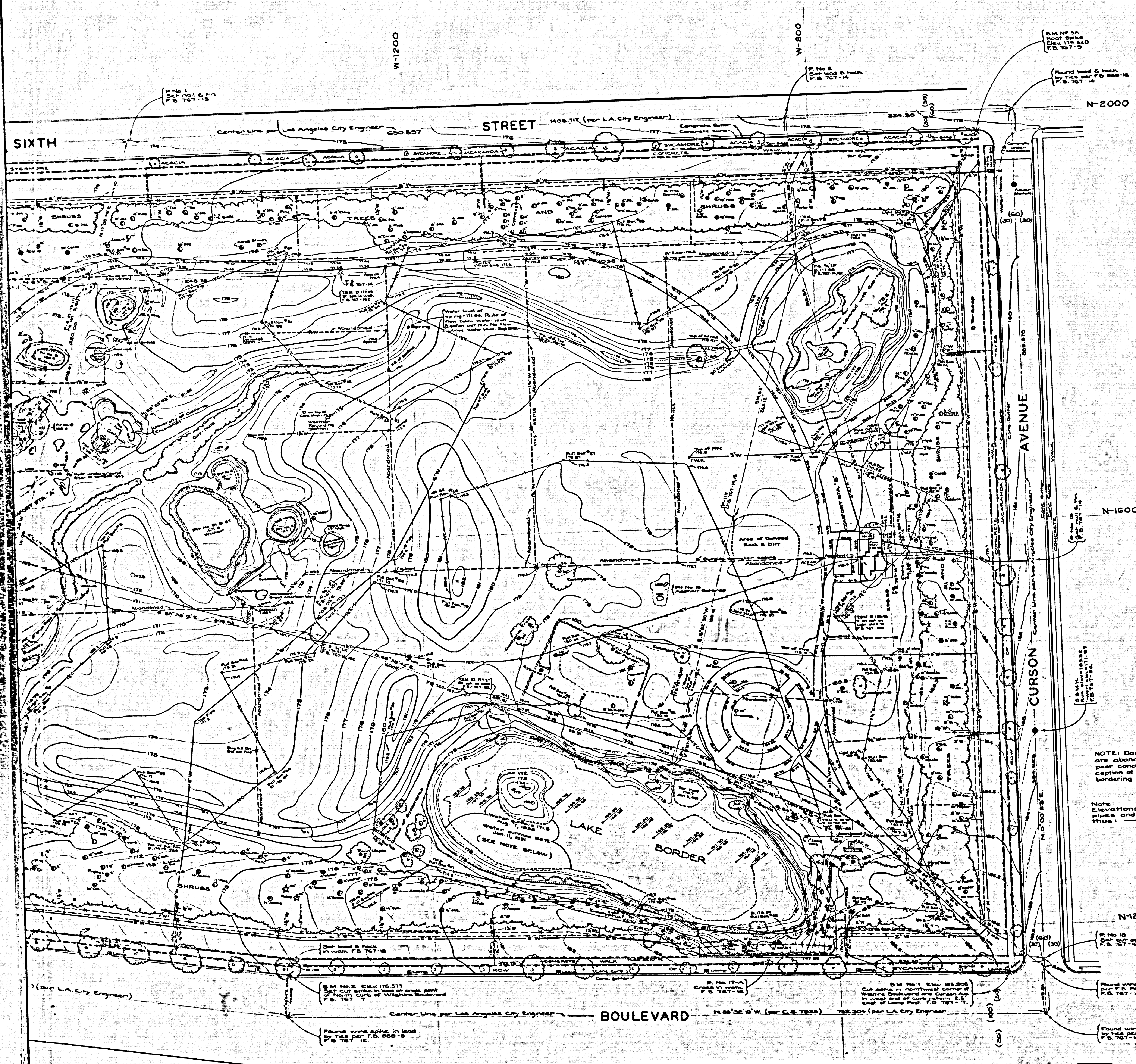
NOTE: Dashed water lines are abandoned or in very poor condition, with the exception of the sprinkler system bordering the park.

Note: Elevations of underground lines and curbs are shown thus: (50) (50)

FOR E OF AU SEE

Note: Where two elevations are shown in Lake Area, the upper is the surface of water, etc., and the lower is the bottom of the lake bed as nearly as could be determined by sounding. See P.S. 761-165-71.

CSB 2096
A1 OF A2



COUNTY OF LOS ANGELES
 TOPOGRAPHIC MAP OF
HANCOCK PARK
 IN
 RANCHO LA BREA

COUNTY SURVEYORS MAP NO B-2096
 SCALE 1 INCH = 40 FT.
 JOB NUMBER 8234

C. E. ARNOLD - COUNTY SURVEYOR
 SURVEYED MARCH 1948

SURVEYED UNDER INSTRUCTIONS OF THE
 BOARD OF SUPERVISORS PER ORDER DATED
 AUGUST 12, 1947

BEARINGS ARE BASED ON THE BEARING OF
 WILSHIRE BOULEVARD AT CURSON AVE.
 AS SHOWN ON C. S. 7928-2

PANTOGRAPHED REDUCTIONS OF
 PLANE TABLE SHEETS G-171, 172, 173, 174, 174A
 F. B. 767

FIELD WORK BY..... R. C. BOWERS
 OFFICE WORK BY..... C. J. GALLI
 CHECKED BY..... L. K. FREEMAN

DATUM - MEAN SEA LEVEL
 ELEVATIONS SHOWN HEREON ARE BASED ON THE
 1928 U. S. C. & G. S. ADJUSTMENT OF U. S. G. S. M. A-1
 1922 (U. S. 537) AND A-12 1922 (U. S. 545)

LEGEND
 --- SPRINKLER HEADS
 x VALVE
 x 3/4" HYDRANT
 --- 6" WOVEN WIRE FENCE

FOR BOUNDARY SURVEY
 OF AUG. - SEPT. 1955 -
 SEE C. S. B-2779.

FOR TOPOGRAPHIC SURVEY OF SEPT. 1938
 (1 INCH = 20 FT.) SEE C. S. B-1442 - 1 & 2

FOR DETAIL MAP OF PIT NO. 101
 SEE C. S. B-2097

FOR DETAIL MAP OF PIT NO. 91
 SEE C. S. B-1442-3

Revised by L.D. Oct. 1949
 Revised by R.E.S. Dec. 1949
 Coordinates Added Dec. 1950 - L.D.
 Revised Jan. 1951 on request of the
 Chief Mechanical Engineer by letter
 dated Nov. 29, 1950. (P.Y. 819 G-264) C.J.G.

C S B 2096
 A 2 OF A 2

Note: Where two elevations are shown in
 Lake Area, the upper is the surface of water,
 etc. and the lower is the bottom of the
 lake bed as nearly as could be determined
 by sounding. See P. 6, 7, 11.

NOTE: Dashed water lines
 are abandoned or in very
 poor condition, with the ex-
 ception of the sprinkler system
 bordering the park.

Note:
 Elevations of underground
 pipes and conduits shown
 thus: ---