

COUNTY OF LOS ANGELES
 MAP OF
 ANGELES NATIONAL FOREST BOUNDARY
 THROUGH
 T.1N.-R.8W. S.B.M.

COUNTY SURVEYORS MAP NO. B-2200
 SCALE: 1 INCH = 600 FT.

JOB NUMBER 4999
 C. E. ARNOLD - COUNTY SURVEYOR
 SURVEYED FEB. 1936 & MAY 1941

BEARINGS ARE BASED ON THE BEARING OF
 THE EAST LINE OF SECTION 19 T.1N. R.8W.
 AS SHOWN ON C.S. B-745-2.

F. B. 482-102 TO 104 & 246 TO 250

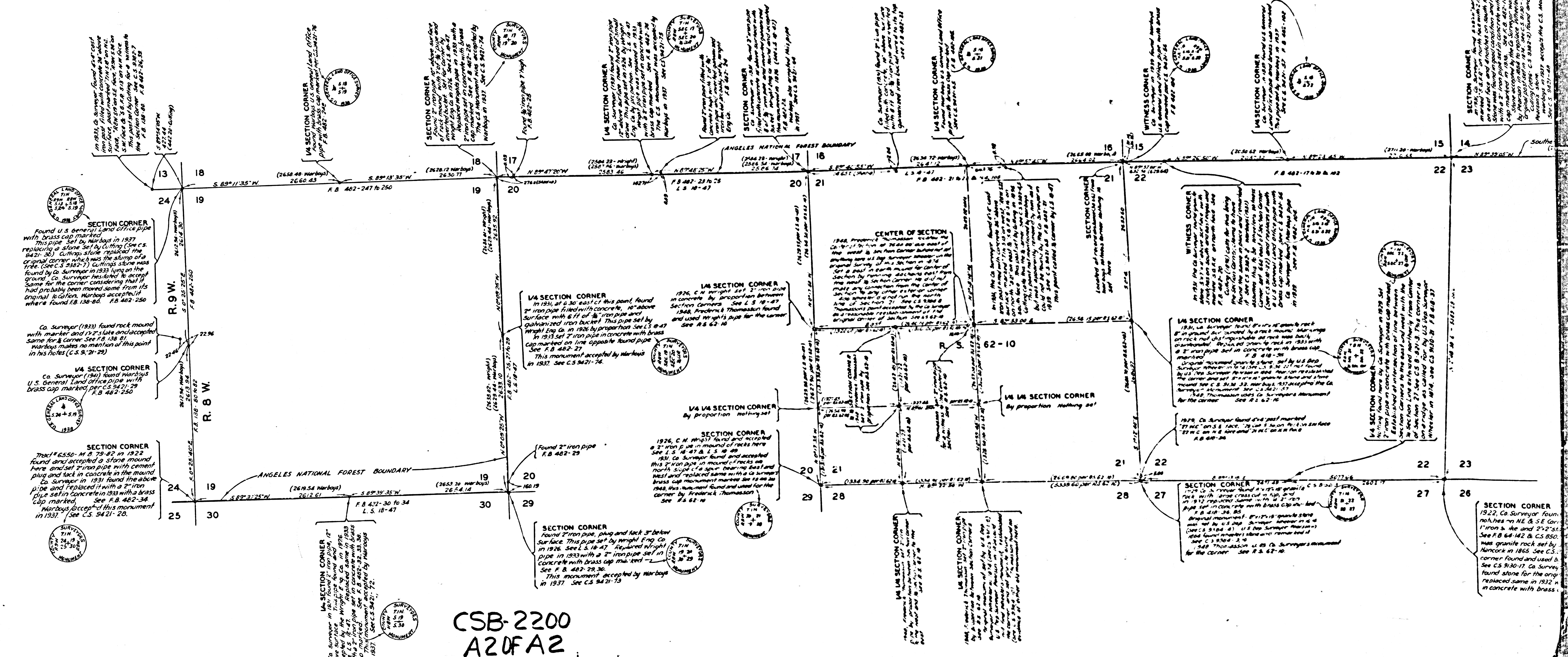
FIELD WORK	BY	A. HELLSTROM
OFFICE WORK	BY	C. E. DROWN
CHECKED	BY	R. R. M'PHERSON In Jan 50

NOTE: The data shown on the Angeles National Forest Boundary on this map supercedes that shown on the portion of the Forest Boundary through T.1N. R.8W. on C.S. B-745-2. C.S. B-745-2 shows the results of a survey made by the County Surveyor in 1931. In 1935 U.S. Geol. Eng. John S. Harbison re-surveyed and recommended this line for the U.S. General Land Office. This map shows the result of the retracement of Harbison's lines by the County Surveyor in 1936 & 1941. The data shown on the south, east, west and interior lines of Section 21 was compiled partly from a survey by the County Surveyor and partly from a survey made by Frederick Thomason in 1848 and shown on R.S. 62-10.

CSB-2200
 A1 OF A2

0555-B CH DAM ENJOYABLE YTHUCO

0555-B CH DAM ENJOYABLE YTHUCO



CSB-2200
A20FA2

SECTION CORNER
 Found U.S. General Land Office pipe with brass cap marked
 This pipe set by Markbus in 1937 replacing a stone set by Cutting (See C.S. 8421-30). Cuttings stone replaced the original corner which was the stump of a tree (See C.S. 9342-7). Cuttings stone was found by Co. Surveyor in 1933 lying on the same for the corner. Considering that it had probably been moved some from its original location, Markbus accepted it where found F.B. 130-01. F.B. 402-250

SECTION CORNER
 Found U.S. General Land Office pipe with brass cap marked
 This pipe set by Markbus in 1937 replacing a stone set by Cutting (See C.S. 8421-30). Cuttings stone replaced the original corner which was the stump of a tree (See C.S. 9342-7). Cuttings stone was found by Co. Surveyor in 1933 lying on the same for the corner. Considering that it had probably been moved some from its original location, Markbus accepted it where found F.B. 130-01. F.B. 402-250

SECTION CORNER
 Found U.S. General Land Office pipe with brass cap marked
 This pipe set by Markbus in 1937 replacing a stone set by Cutting (See C.S. 8421-30). Cuttings stone replaced the original corner which was the stump of a tree (See C.S. 9342-7). Cuttings stone was found by Co. Surveyor in 1933 lying on the same for the corner. Considering that it had probably been moved some from its original location, Markbus accepted it where found F.B. 130-01. F.B. 402-250

SECTION CORNER
 Found U.S. General Land Office pipe with brass cap marked
 This pipe set by Markbus in 1937 replacing a stone set by Cutting (See C.S. 8421-30). Cuttings stone replaced the original corner which was the stump of a tree (See C.S. 9342-7). Cuttings stone was found by Co. Surveyor in 1933 lying on the same for the corner. Considering that it had probably been moved some from its original location, Markbus accepted it where found F.B. 130-01. F.B. 402-250

SECTION CORNER
 Found U.S. General Land Office pipe with brass cap marked
 This pipe set by Markbus in 1937 replacing a stone set by Cutting (See C.S. 8421-30). Cuttings stone replaced the original corner which was the stump of a tree (See C.S. 9342-7). Cuttings stone was found by Co. Surveyor in 1933 lying on the same for the corner. Considering that it had probably been moved some from its original location, Markbus accepted it where found F.B. 130-01. F.B. 402-250

SECTION CORNER
 Found U.S. General Land Office pipe with brass cap marked
 This pipe set by Markbus in 1937 replacing a stone set by Cutting (See C.S. 8421-30). Cuttings stone replaced the original corner which was the stump of a tree (See C.S. 9342-7). Cuttings stone was found by Co. Surveyor in 1933 lying on the same for the corner. Considering that it had probably been moved some from its original location, Markbus accepted it where found F.B. 130-01. F.B. 402-250

SECTION CORNER
 Found U.S. General Land Office pipe with brass cap marked
 This pipe set by Markbus in 1937 replacing a stone set by Cutting (See C.S. 8421-30). Cuttings stone replaced the original corner which was the stump of a tree (See C.S. 9342-7). Cuttings stone was found by Co. Surveyor in 1933 lying on the same for the corner. Considering that it had probably been moved some from its original location, Markbus accepted it where found F.B. 130-01. F.B. 402-250

SECTION CORNER
 Found U.S. General Land Office pipe with brass cap marked
 This pipe set by Markbus in 1937 replacing a stone set by Cutting (See C.S. 8421-30). Cuttings stone replaced the original corner which was the stump of a tree (See C.S. 9342-7). Cuttings stone was found by Co. Surveyor in 1933 lying on the same for the corner. Considering that it had probably been moved some from its original location, Markbus accepted it where found F.B. 130-01. F.B. 402-250