

COUNTY OF LOS ANGELES  
 TOPOGRAPHIC MAP OF  
**DUME CANYON ROAD**  
 &  
**NEWTON CANYON ROAD**  
 FROM  
 MULHOLLAND HIGHWAY  
 TO  
 LATIGO CANYON ROAD  
 COUNTY SURVEYORS MAP NO. B-2201  
 SHEET NO. 1 OF 2 SHEETS  
 SCALE: 1 INCH = 50 FT.

JOB NUMBER 7849  
 C.E. ARNOLD - COUNTY SURVEYOR  
 SURVEYED... APRIL 1948 - NOV 1948  
 SURVEYED ON REQUEST OF THE ROAD  
 COMMISSIONER UNDER SEC. 79, ORD. 4099  
 BY LETTER DATED JUNE 13, 1949  
 BEARINGS ARE BASED ON THE BEARING OF  
 MULHOLLAND HIGHWAY PER C.S. 8024-SHEET A  
 F.B. 445-147-201  
 PLANE TABLE SHEETS E-323-E-329  
 FIELD WORK BY: F.H. BLANCHARD  
 L.L. BROWN  
 W.S. COWHERD  
 D.S. WALTERMIRE  
 OFFICE WORK BY: HENRIEBER  
 LEO  
 W.G. VAN DEREN  
 D.A. WHITE  
 CHECKED BY: C.J. GALLI

DATUM MEAN SEA LEVEL  
 ELEVATIONS SHOWN HEREON ARE BASED ON THE 1928  
 U.S.C. & G. ADJUSTMENT OF C.S. MONUMENT AT 1/4 SEC.  
 COR. SECTIONS 7/12/15, R. 18 & 19 W. (U.S. 2515).

FOR ALIGNMENT SEE C.S. B-2255

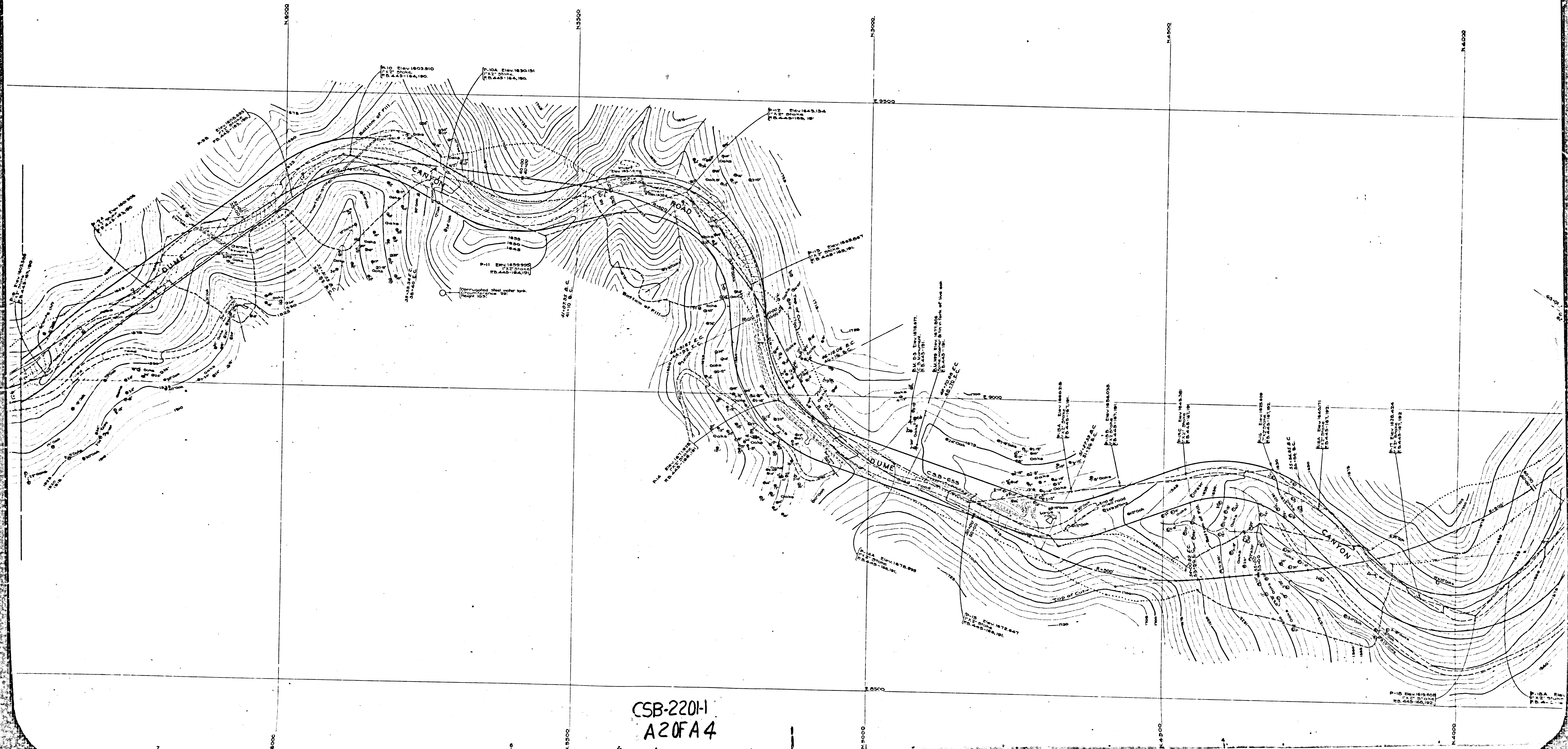
Alignment Revised Per C.S. B-2245  
 Under J.N. 090445, Jan 11, 1956  
 Aeronaut. Topography Per 8 578 2

CSB-2201-1  
 A10FA 4

SHEET NO. 1 OF 2 SHEETS

SHEET NO. 1 OF 2 SHEETS

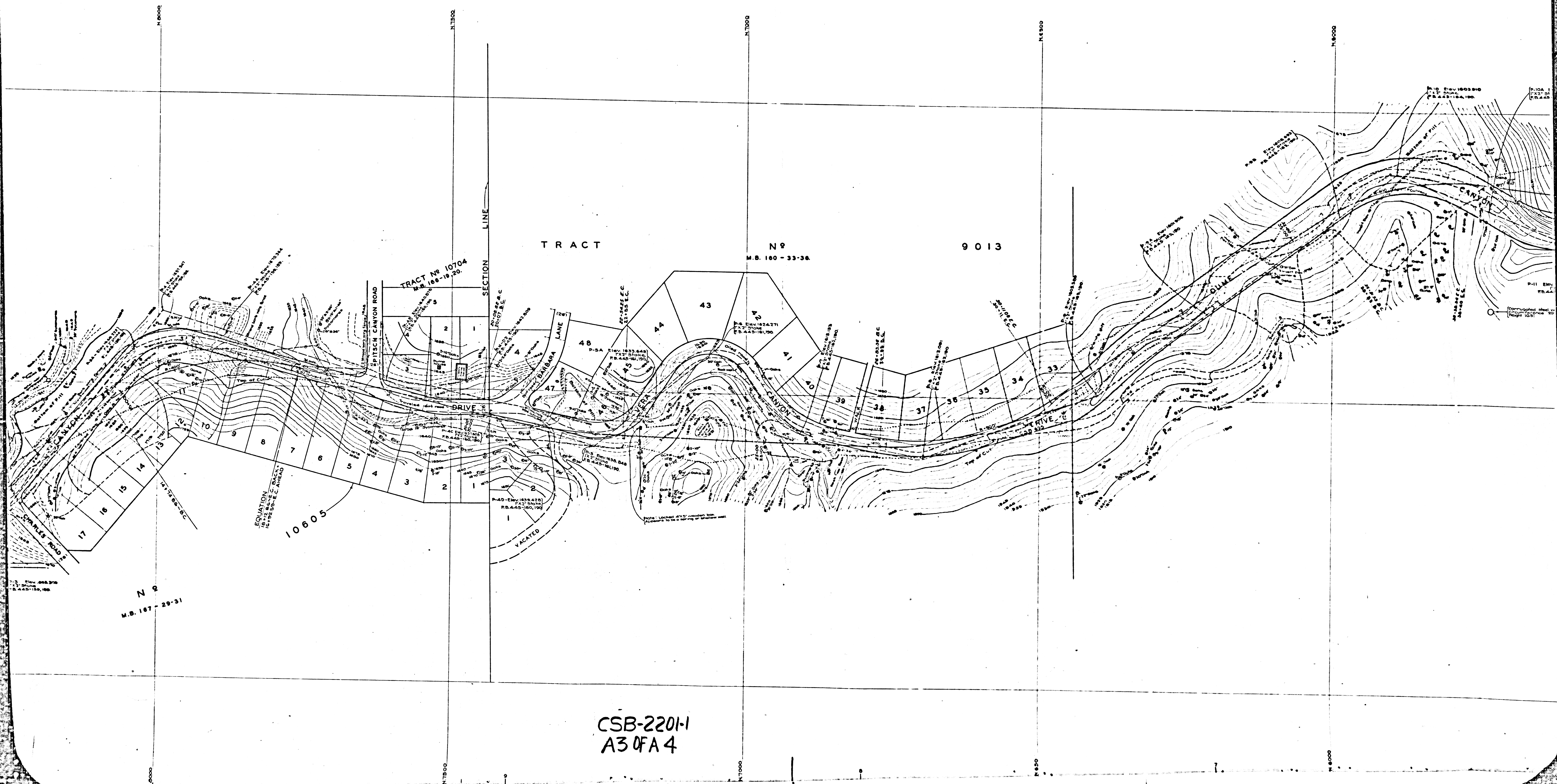




CSB-2201-1  
A20FA4

P-18 Elev. 1819.000  
P-19 Elev. 1819.000  
P-20 Elev. 1819.000  
P-21 Elev. 1819.000  
P-22 Elev. 1819.000  
P-23 Elev. 1819.000  
P-24 Elev. 1819.000  
P-25 Elev. 1819.000  
P-26 Elev. 1819.000  
P-27 Elev. 1819.000  
P-28 Elev. 1819.000  
P-29 Elev. 1819.000  
P-30 Elev. 1819.000  
P-31 Elev. 1819.000  
P-32 Elev. 1819.000  
P-33 Elev. 1819.000  
P-34 Elev. 1819.000  
P-35 Elev. 1819.000  
P-36 Elev. 1819.000  
P-37 Elev. 1819.000  
P-38 Elev. 1819.000  
P-39 Elev. 1819.000  
P-40 Elev. 1819.000  
P-41 Elev. 1819.000  
P-42 Elev. 1819.000  
P-43 Elev. 1819.000  
P-44 Elev. 1819.000  
P-45 Elev. 1819.000  
P-46 Elev. 1819.000  
P-47 Elev. 1819.000  
P-48 Elev. 1819.000  
P-49 Elev. 1819.000  
P-50 Elev. 1819.000  
P-51 Elev. 1819.000  
P-52 Elev. 1819.000  
P-53 Elev. 1819.000  
P-54 Elev. 1819.000  
P-55 Elev. 1819.000  
P-56 Elev. 1819.000  
P-57 Elev. 1819.000  
P-58 Elev. 1819.000  
P-59 Elev. 1819.000  
P-60 Elev. 1819.000  
P-61 Elev. 1819.000  
P-62 Elev. 1819.000  
P-63 Elev. 1819.000  
P-64 Elev. 1819.000  
P-65 Elev. 1819.000  
P-66 Elev. 1819.000  
P-67 Elev. 1819.000  
P-68 Elev. 1819.000  
P-69 Elev. 1819.000  
P-70 Elev. 1819.000  
P-71 Elev. 1819.000  
P-72 Elev. 1819.000  
P-73 Elev. 1819.000  
P-74 Elev. 1819.000  
P-75 Elev. 1819.000  
P-76 Elev. 1819.000  
P-77 Elev. 1819.000  
P-78 Elev. 1819.000  
P-79 Elev. 1819.000  
P-80 Elev. 1819.000  
P-81 Elev. 1819.000  
P-82 Elev. 1819.000  
P-83 Elev. 1819.000  
P-84 Elev. 1819.000  
P-85 Elev. 1819.000  
P-86 Elev. 1819.000  
P-87 Elev. 1819.000  
P-88 Elev. 1819.000  
P-89 Elev. 1819.000  
P-90 Elev. 1819.000  
P-91 Elev. 1819.000  
P-92 Elev. 1819.000  
P-93 Elev. 1819.000  
P-94 Elev. 1819.000  
P-95 Elev. 1819.000  
P-96 Elev. 1819.000  
P-97 Elev. 1819.000  
P-98 Elev. 1819.000  
P-99 Elev. 1819.000  
P-100 Elev. 1819.000





TRACT

N 9

9013

M.B. 100-33-36

TRACT No 10704  
M.B. 106-19-20

SECTION LINE

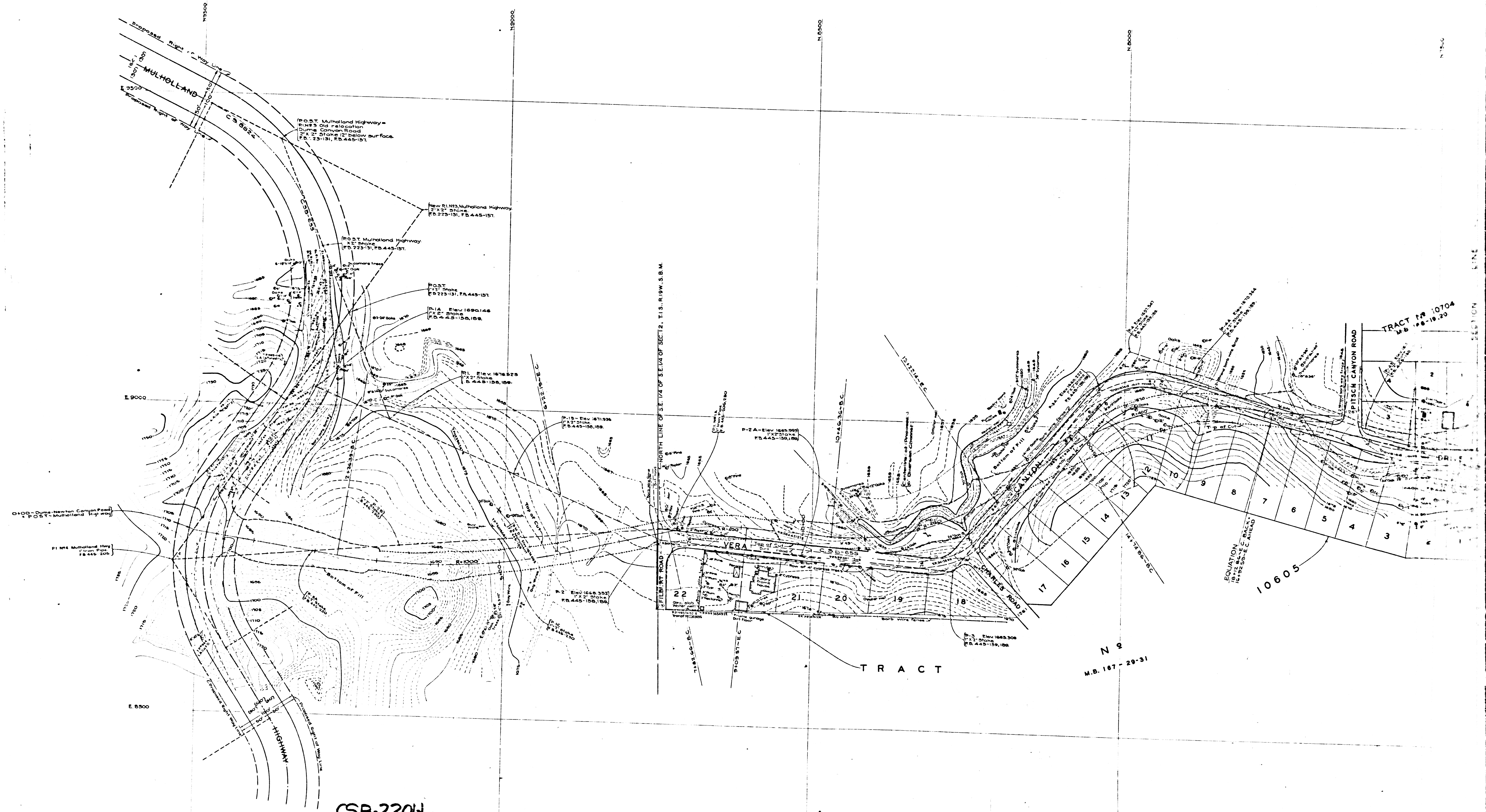
N 9  
M.B. 107-29-31

CSB-2201-1  
A3 OF A 4



SHEET 1 OF 5 SHEETS  
CONSIL STRAVERDOR 2 MAP 14B-5501

SHEET 1 OF 5 SHEETS  
CONSIL STRAVERDOR 2 MAP 14B-5501



CSB-2204  
A4 OF A4

N 9  
M.B. 167-29-31