

COUNTY OF LOS ANGELES
 TOPOGRAPHIC MAP OF
DUME CANYON ROAD
 &
NEWTON CANYON ROAD
 FROM
 MULHOLLAND HIGHWAY
 TO
 LATIGO CANYON ROAD
 COUNTY SURVEYORS MAP N°B-2201
 SHEET N°2 OF 2 SHEETS
 SCALE: 1 INCH = 50 FT.

JOB NUMBER 7949
 C.E. ARNOLD - COUNTY SURVEYOR
 SURVEYED... APRIL 1948 - NOV 1949.
 SURVEYED ON REQUEST OF THE ROAD
 COMMISSIONER UNDER SEC 78, ORD 4099
 BY LETTER DATED JUNE 13, 1949.
 BEARINGS ARE BASED ON THE BEARING OF
 MULHOLLAND HIGHWAY PER CS 8824-SHEET 6
 FB 445-147-201.
 PLANE TABLE SHEETS E-323-E-329
 FIELD WORK BY: F.M. BLANCHARD
 ALL SHOWN
 W.S. COWHERE
 DS WALTERMIRE
 OFFICE WORK BY: 1 TO
 DA WHITE
 CHECKED BY: C.J. GALLI
 DATUM MEAN SEA LEVEL
 ELEVATIONS SHOWN HEREON ARE BASED ON THE 1928
 U.S.C.G.S. ADJUSTMENT OF C.S. MONUMENT AT LA SEC.
 COR. SECTIONS 7 1/2 T.15. R.18 S.19W. (U.S. 2515).
 FOR ALIGNMENT SEE C.S.B-2235

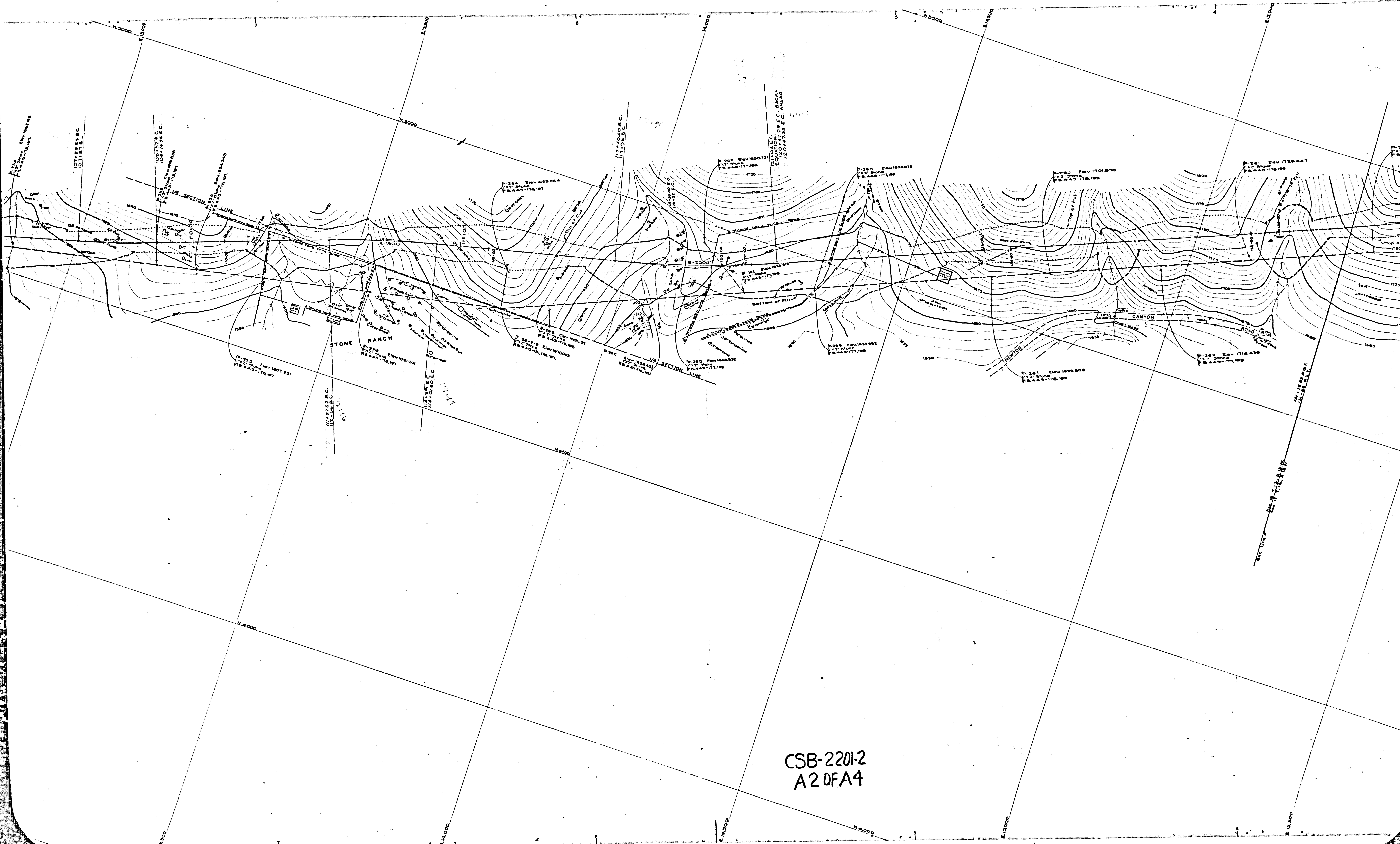
NOTE: PRELIMINARY STATIONING SHOWN BY VERTICAL LETTERING
 FINAL STATIONING SHOWN BY SLANT LETTERING

CSB-2201-2
 A1 OF A4

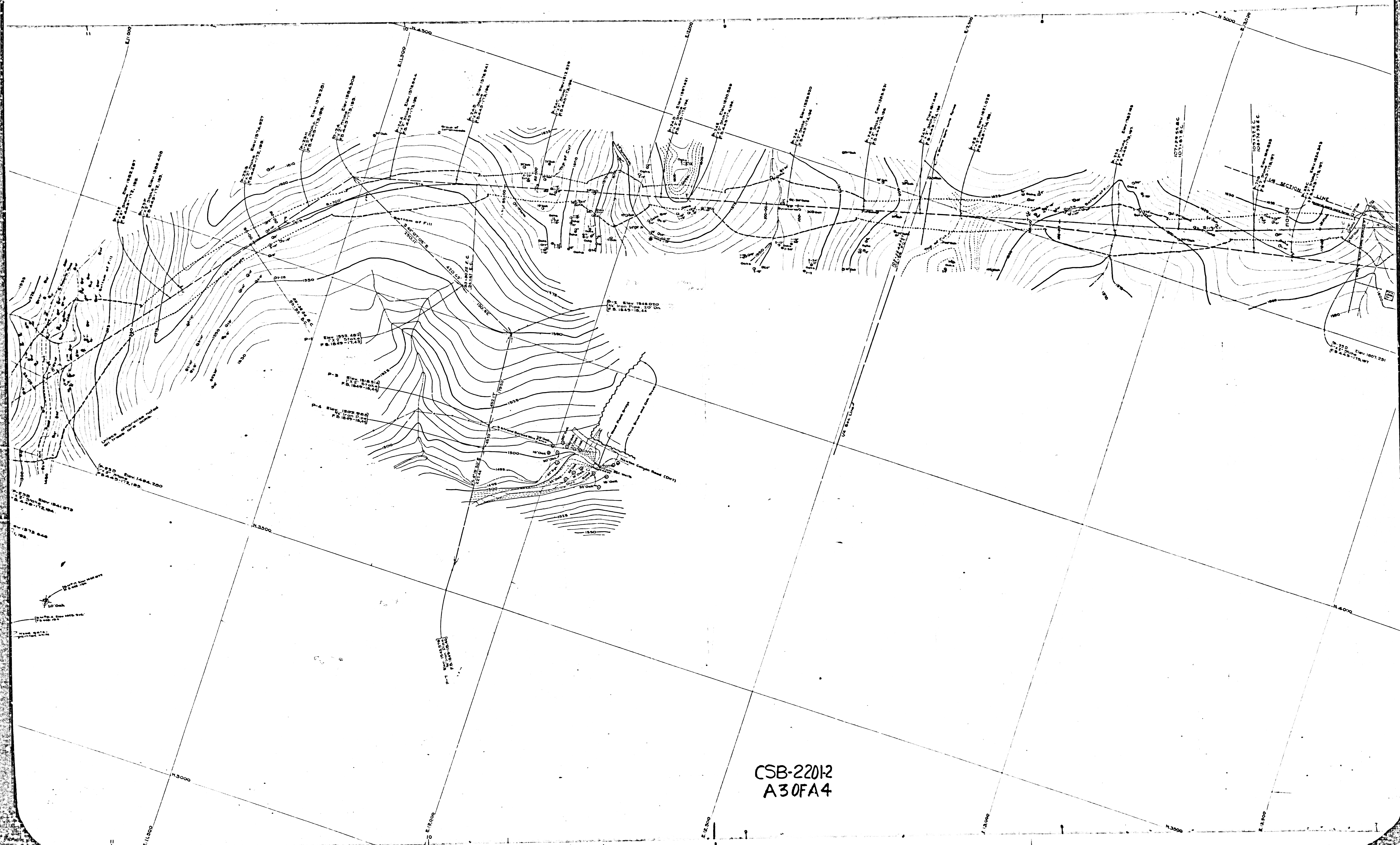
Alignment Revised Per C.S.B-2235
 Under J.N. 050-45, Jan. 11, 1956
 Topography added on 1-19-60-L.B.

COUNTY SURVEYORS MAP N°B-2201
 SHEET N°2 OF 2 SHEETS

SHEET N°2 OF 2 SHEETS
 COUNTY SURVEYORS MAP N°B-2201



CSB-2201-2
A2 DFA4



CSB-22012
A30FA4

SHEET No 5 OF 5 SHEETS
CONTRACT NO. 200-100-0000

SHEET No 5 OF 5 SHEETS
CONTRACT NO. 200-100-0000

CSB-2201-2
A40FA4

