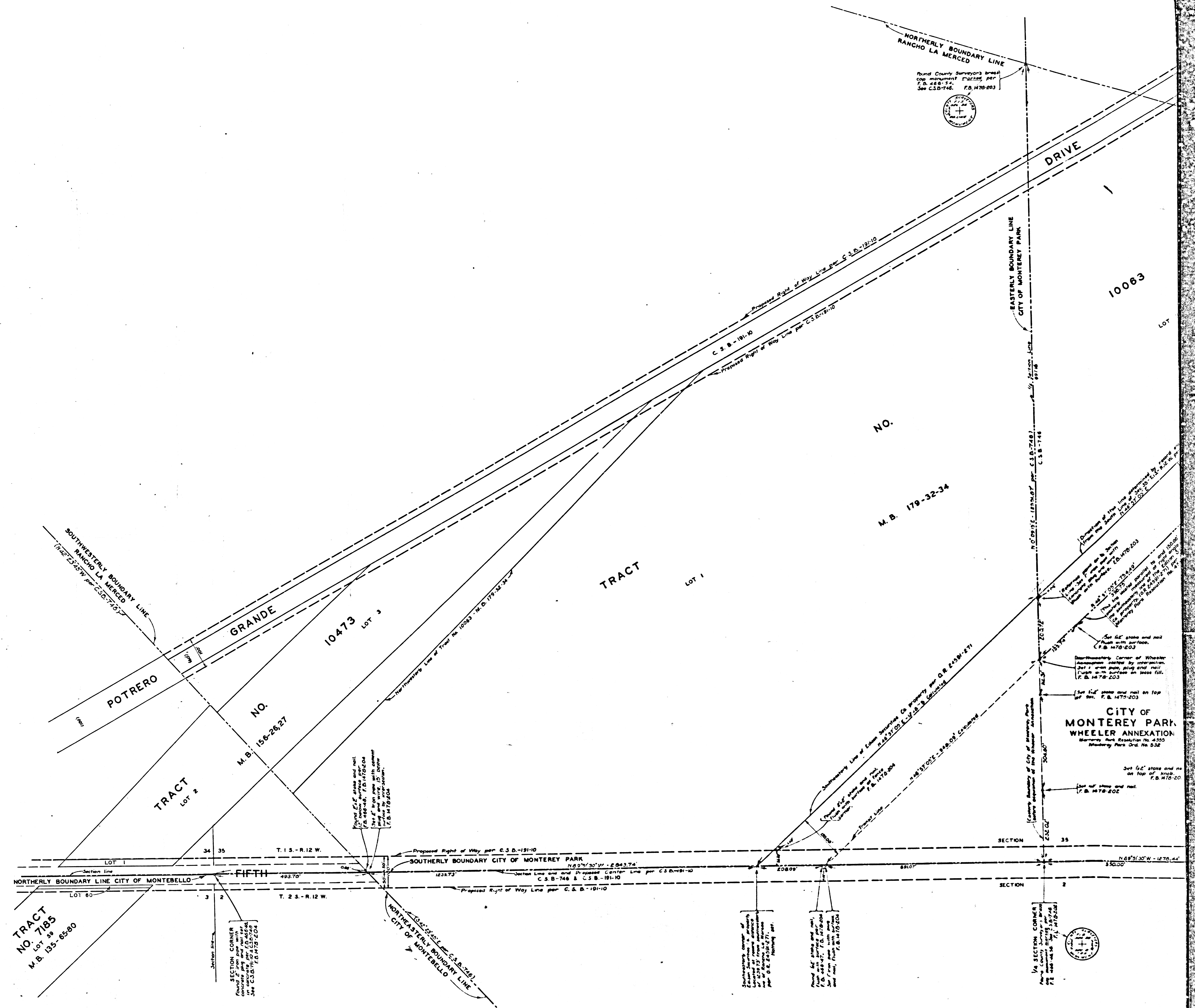


COUNTY OF LOS ANGELES  
 MAP OF THE  
**BOUNDARY OF WHEELER ANNEXATION**  
 TO  
**THE CITY OF MONTEREY PARK**  
 BEING  
 A PORTION OF LOT 2, TRACT NO. 10063, M.B. 179-32-34  
 COUNTY SURVEYORS MAP NO. B-2202  
 SCALE: 1 INCH = 100 FT.

JOB NUMBER 8564  
 G. E. ARNOLD - COUNTY SURVEYOR  
 SURVEYED - AUGUST 1949  
 SURVEYED UNDER INSTRUCTIONS OF THE BOARD OF SUPERVISORS PER ORDER DATED JULY 26, 1949  
 BEARINGS ARE BASED ON THE BEARING OF THE SOUTH LINE OF SECTION 35, T 1 S, R 12 W, AS SHOWN ON C.S.B. 746.  
 F.B. 1478 -- 201-204  
 FIELD WORK BY G. A. BENSON  
 OFFICE WORK BY B. K. KENT  
 O. E. SWANSON  
 CHECKED BY K. R. McPHERSON

INDEX 36

CSB-2202  
A10FA2



TRACT  
NO. 7185  
Lot 5A  
M.B. 155-65-80

SECTION CORNER  
Found 1/2" iron pipe with  
cap monument 10/22/24  
on corner per C.S.B.-746 B  
See C.S.B. 746 B 10/22/24

CSB-2202  
A20FA 2.

CITY OF  
MONTEREY PARK  
WHEELER ANNEXATION  
Boundary Map Resolution No. 4300  
Monterey Park Ord. No. 532

Via SECTION CORNER  
Found 1/2" iron pipe with  
cap monument 10/22/24  
on corner per C.S.B.-746 B  
See C.S.B. 746 B 10/22/24

Found County Surveyors brass  
cap monument 10/22/24  
F.B. 448-174  
See C.S.B.-746 B 10/22/24

