

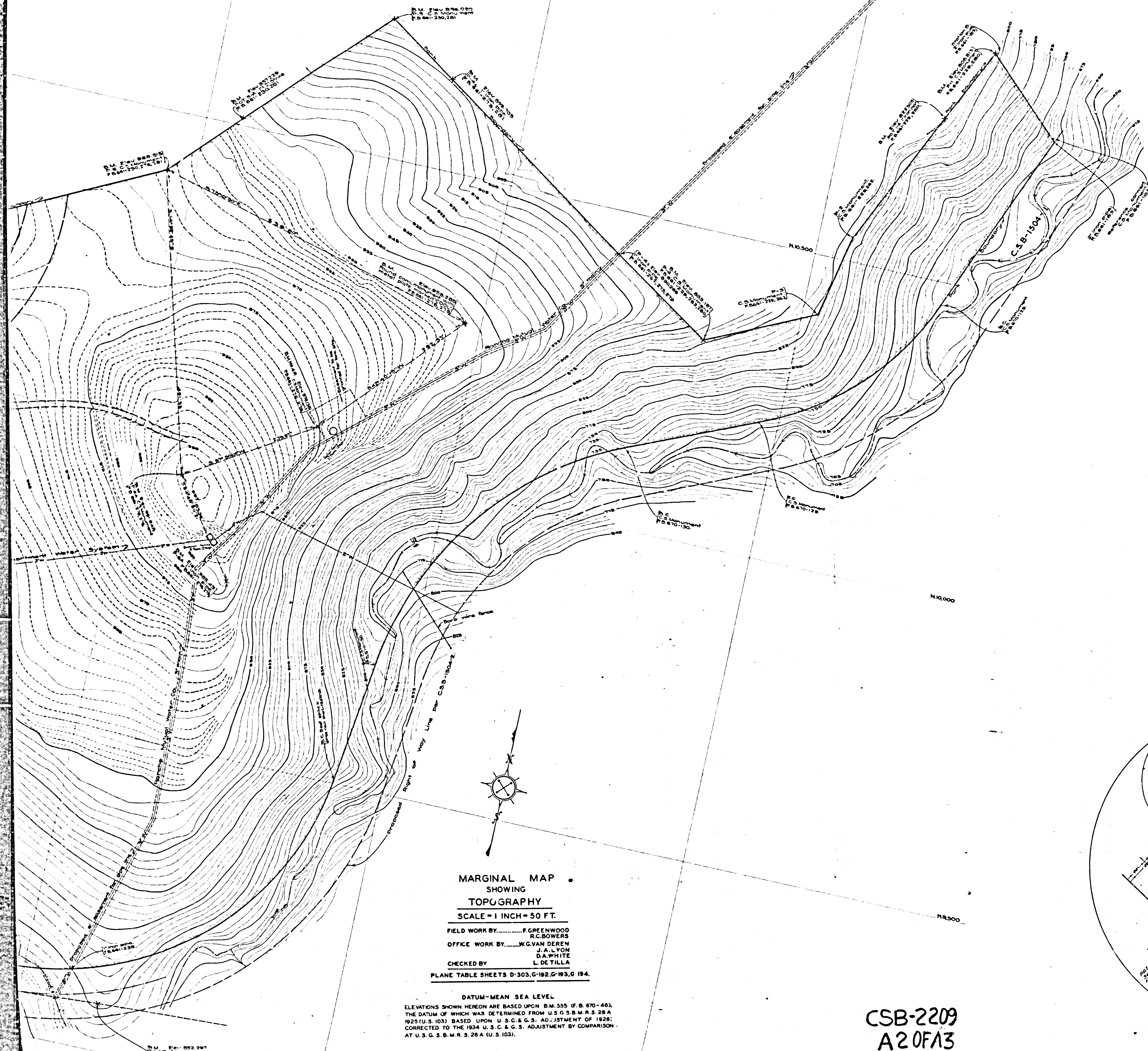
COUNTY OF LOS ANGELES
 MAP OF
ROLLING HILLS PARK
 BEING
 A PORTION OF RANCHO LOS
 PALOS VERDES—P. 2—543-545.
 COUNTY SURVEYORS MAP NO B-2209

SCALE: 1 INCH = 100 FT.

JOB NUMBER 8578
 C. E. ARNOLD—COUNTY SURVEYOR
 SURVEYED: OCT. 1949 TO MAY 1950
 SURVEYED ON REQUEST OF THE CHIEF
 ADMINISTRATIVE OFFICER UNDER SEC. 79,
 ORD. 4099, BY LETTER DATED OCT. 3, 1949
 BEARINGS ARE BASED ON THE BEARING OF
 THE SOUTHWESTERLY BOUNDARY OF THE
 34,742 ACRE PARCEL SHOWN ON R.S. 42-37

FB 661-227-281; FB. 670-126-133.
 FIELD WORK BY F. H. BLANCHARD
 OFFICE WORK BY O. E. SWANSON
 CHECKED BY K. R. Mc PHERSON INDEX-27

CSB-2209
 A10FA3



**MARGINAL MAP
SHOWING
TOPOGRAPHY**

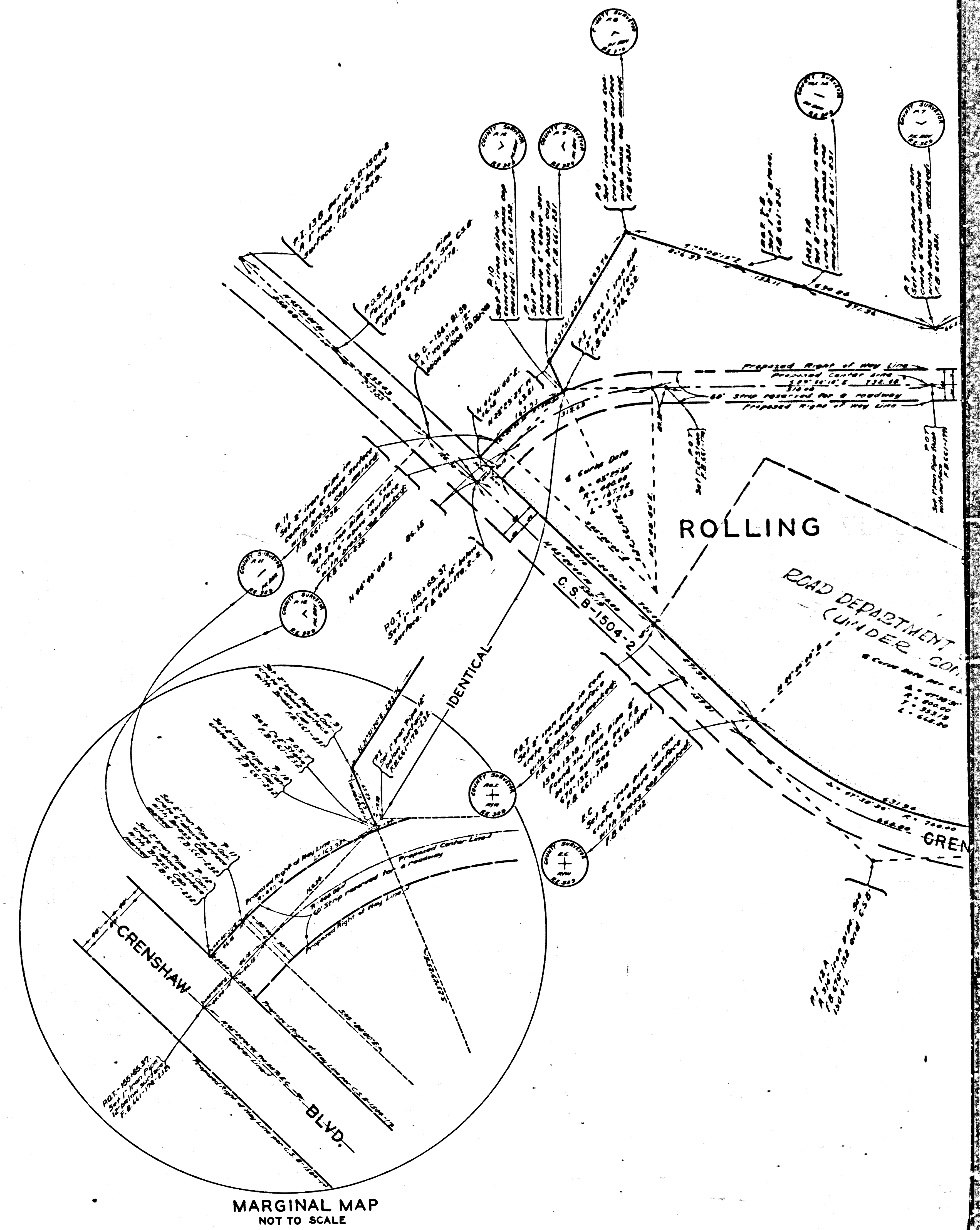
SCALE = 1 INCH = 50 FT.

FIELD WORK BY.....F. GREENWOOD
R.C. BOWERS
OFFICE WORK BY.....M.G. VAN DEREN
J.A. LYON
D.A. WHITE
L. DE TILLA
CHECKED BY

PLANE TABLE SHEETS D-303, G-192, G-193, G-194.

DATUM—MEAN SEA LEVEL
ELEVATIONS SHOWN HEREON ARE BASED UPON B.M. 355 (F. B. 670-46),
THE DATUM OF WHICH WAS DETERMINED FROM U.S.G.S. B.M. R.S. 28 A
1925 (U.S. 103) BASED UPON U.S.C. & G.S. ADJUSTMENT OF 1928,
CORRECTED TO THE 1914 U.S.C. & G.S. ADJUSTMENT BY COMPARISON
AT U.S.G.S. B.M. R.S. 28 A (U.S. 103).

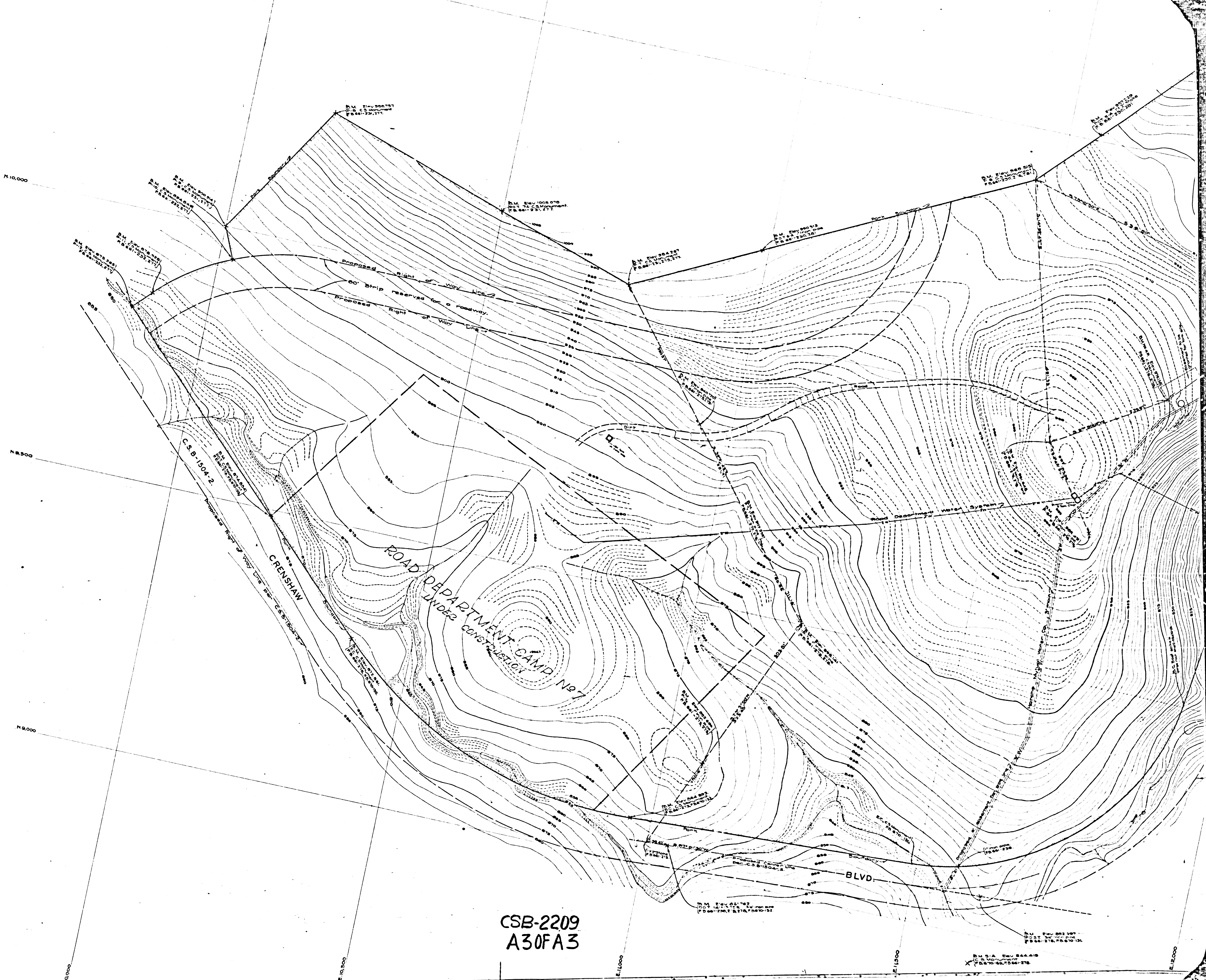
CSB-2209
A20FA3



MARGINAL MAP
NOT TO SCALE

COMPL YTHUUD NAB NRB-SS33

COMPL YTHUUD NAB NRB-SS33



CSB-2209
A30FA3

N.B.S.A. Elev. 888.418
C.S.B. 1504.2
P. 6870-68,706-178