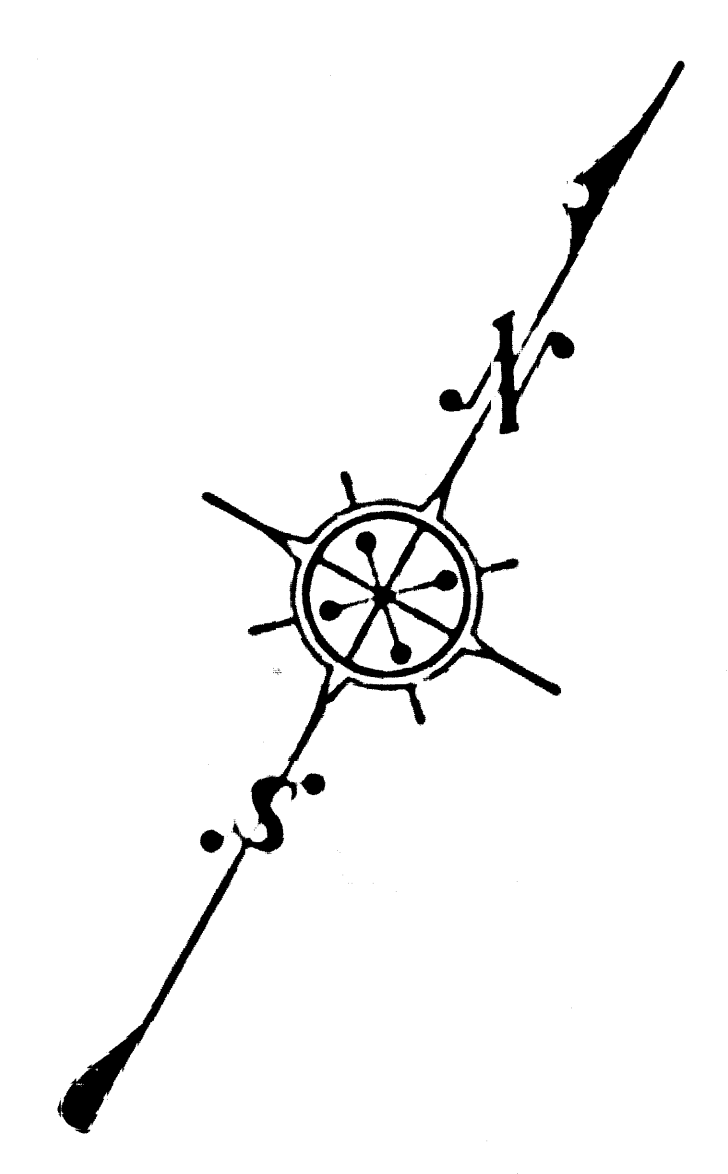
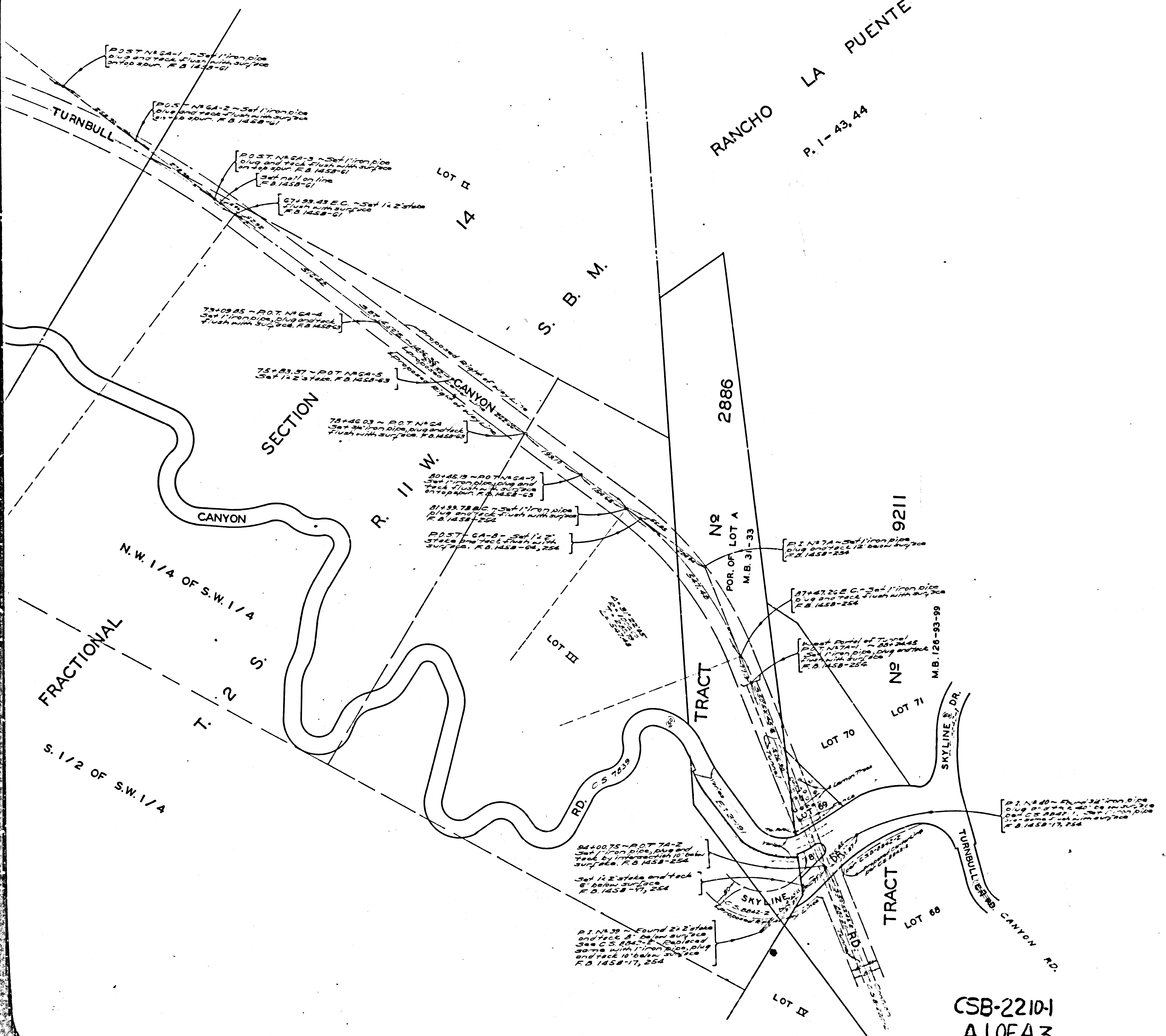


RANCHO LA PUENTE  
P. 1-43, 44



COUNTY OF LOS ANGELES  
MAP OF  
**TURNBULL CANYON ROAD**  
FROM  
EASTERLY BOUNDARY, CITY OF WHITTIER  
TO  
**LOS ROBLES AVENUE**

COUNTY SURVEYORS MAP NO B-2210  
SHEET NO 1 OF 3 SHEETS  
SCALE: 1 INCH = 100 FT.

JOB NUMBER 8505

C. E. ARNOLD - COUNTY SURVEYOR  
SURVEYED APR. 1948 - MARCH 1950

SURVEYED UNDER INSTRUCTIONS OF THE  
BOARD OF SUPERVISORS PER ORDER DATED  
MARCH 9, 1948

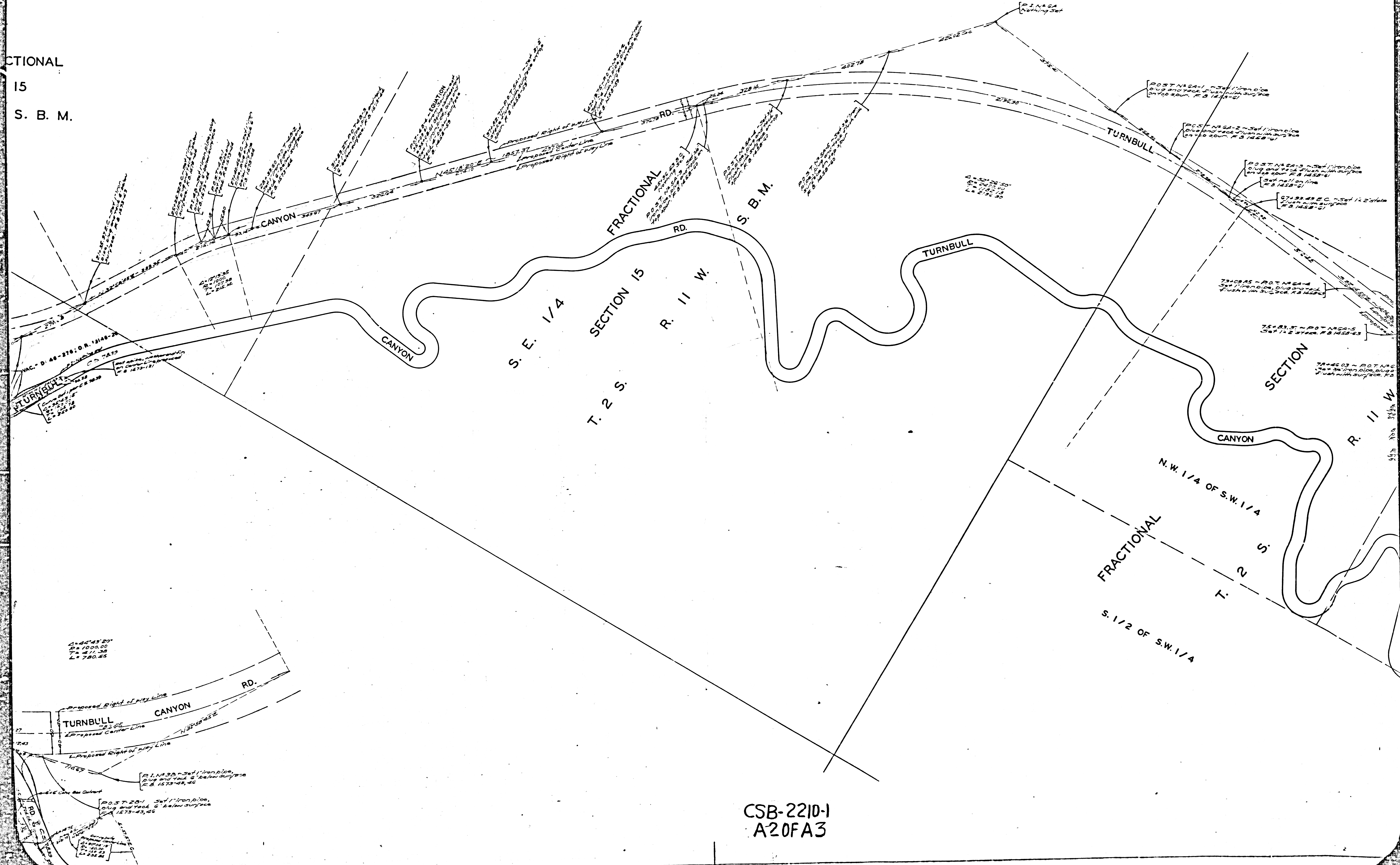
BEARINGS ARE BASED ON THE CALIFORNIA  
COORDINATE SYSTEM, ZONE 7, PER CHAPTER  
1307, STATUTES 1947. SEE C.S. 9423

F. B. 1458-3-283  
F. B. 1573-5-32

FIELD WORK BY . . . . . D. E. HOLMES  
OFFICE WORK BY . . . . . C. W. COX  
CHECKED BY . . . . . A. A. ROESER

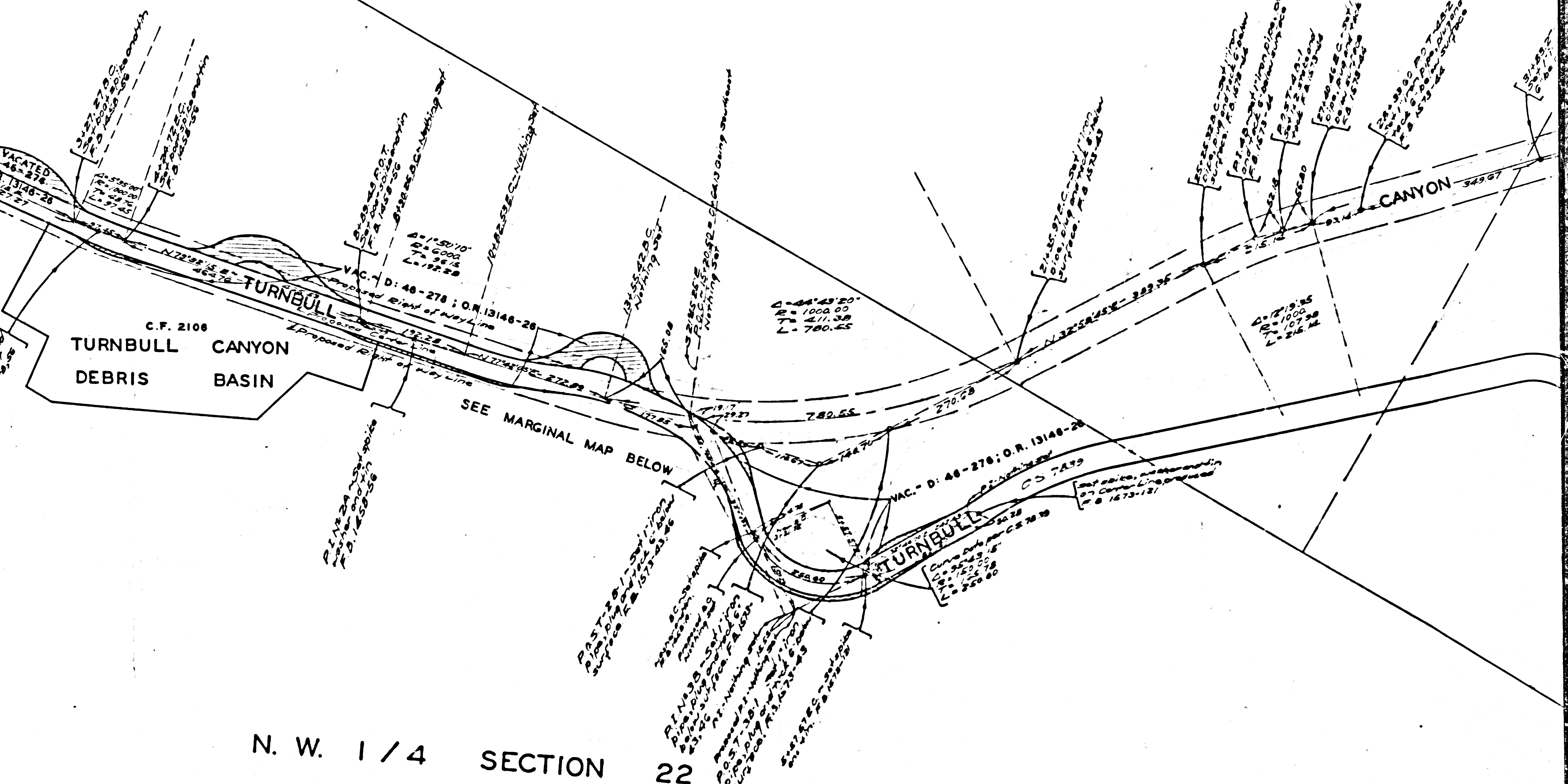
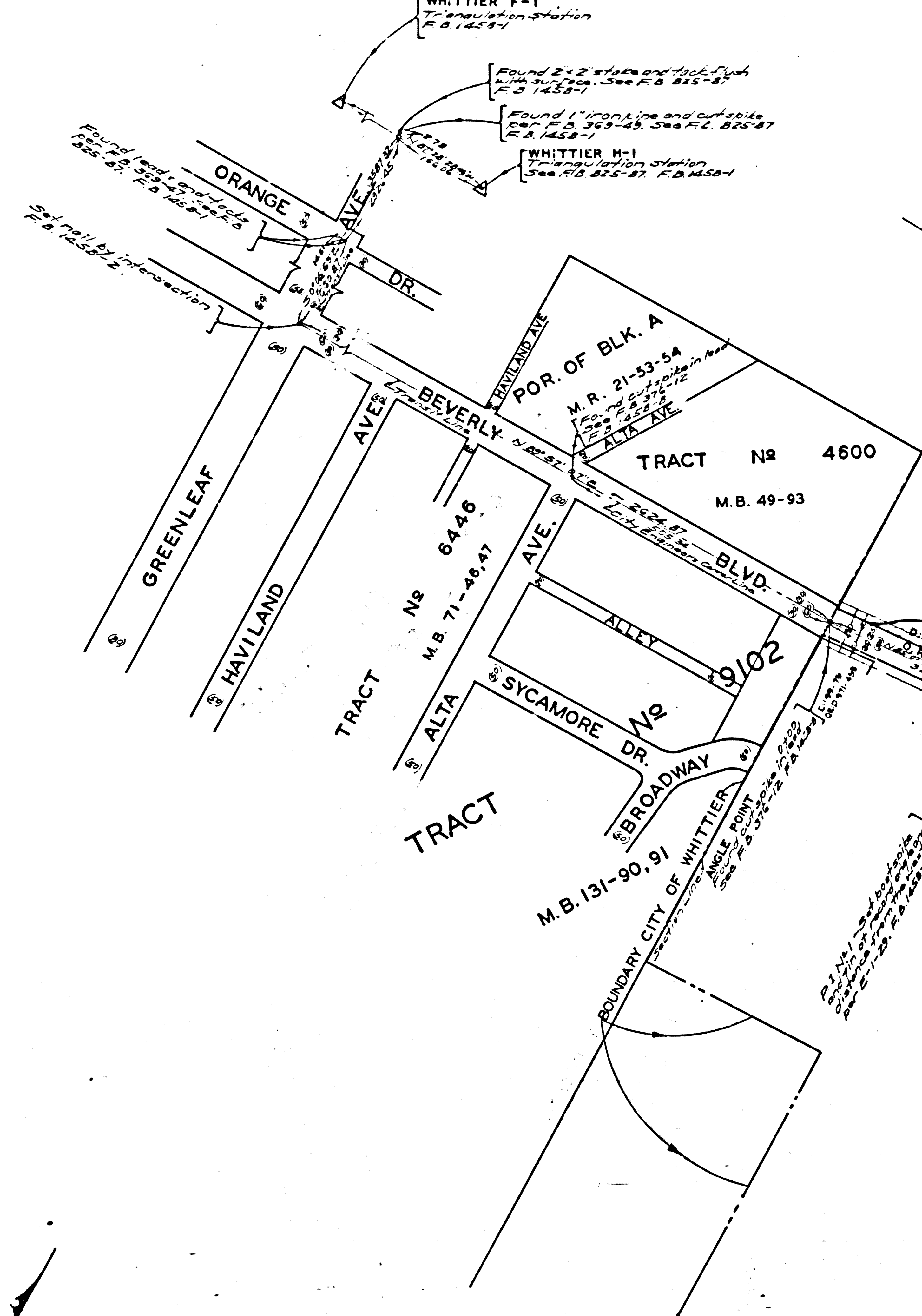
CSB-2210-1  
A10FA3

CTIONAL  
15  
S. B. M.

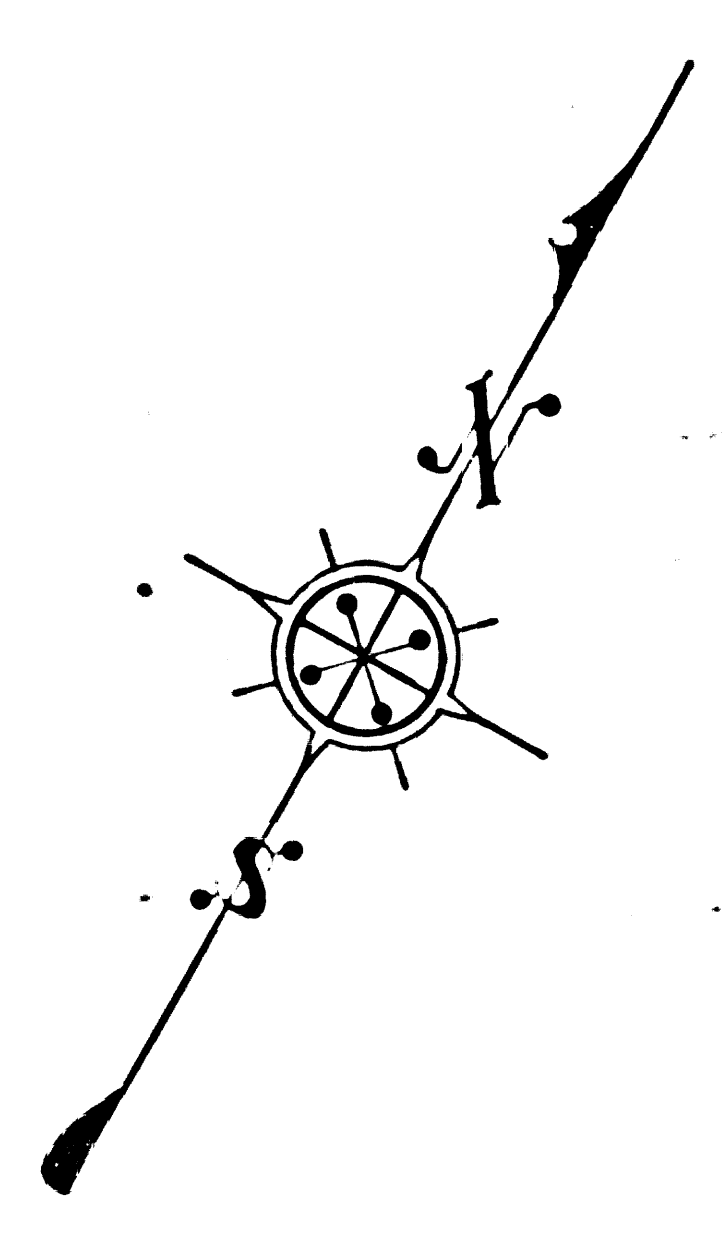
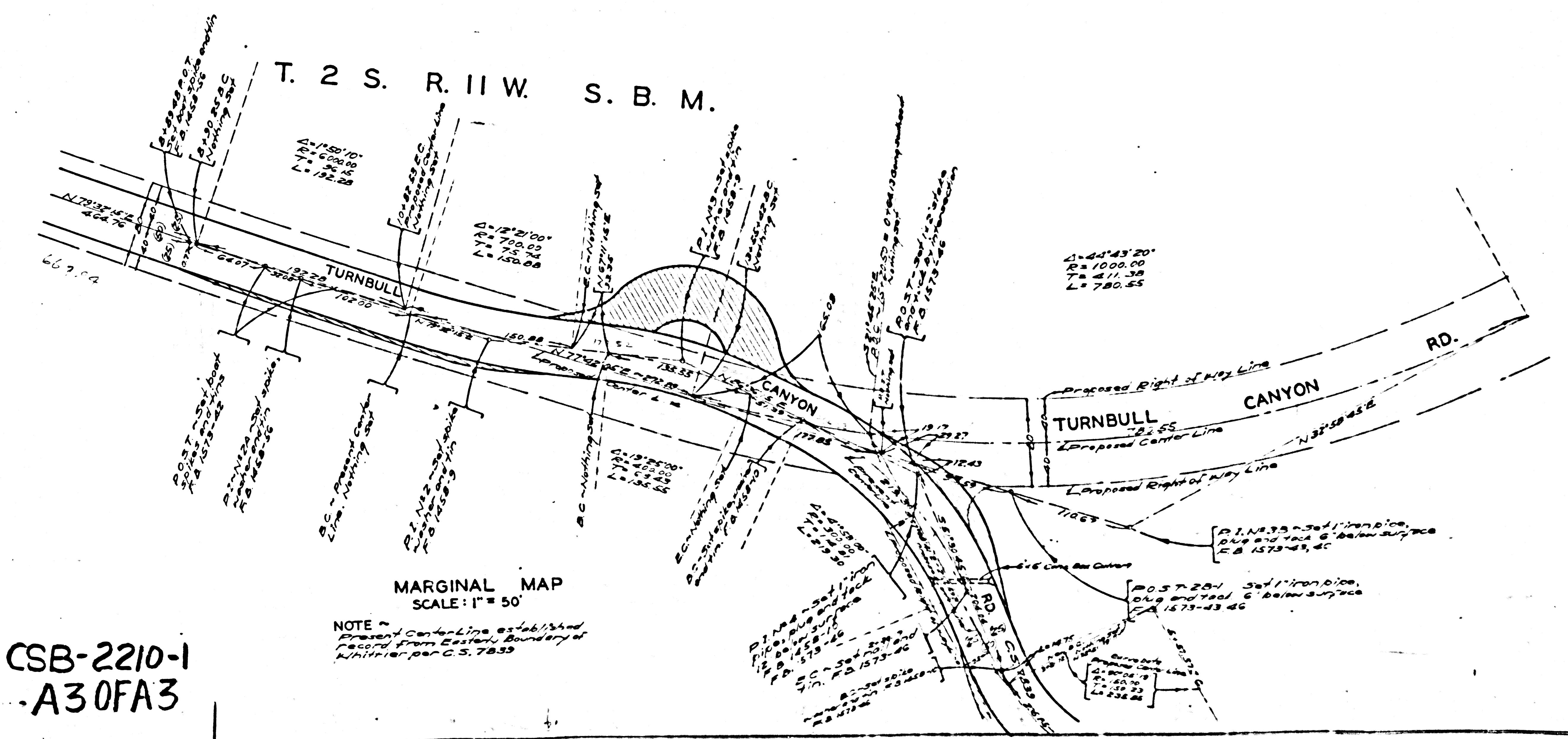


CSB-2210-1  
A20FA3

S. W. 1/4 FRACTIONAL  
SECTION 15  
T. 2 S. R. 11 W. S. B. M.



N. W. 1/4 SECTION 22  
T. 2 S. R. 11 W. S. B. M.



CSB-2210-1  
-A30FA3