

COUNTY OF LOS ANGELES  
 MAP OF  
**TURNBULL CANYON ROAD**  
 FROM  
 EASTERLY BOUNDARY, CITY OF WHITTIER  
 TO  
 LOS ROBLES AVENUE

COUNTY SURVEYORS MAP NO B-2210  
 SHEET NO 2 OF 3 SHEETS  
 SCALE: 1 INCH = 100 FT.

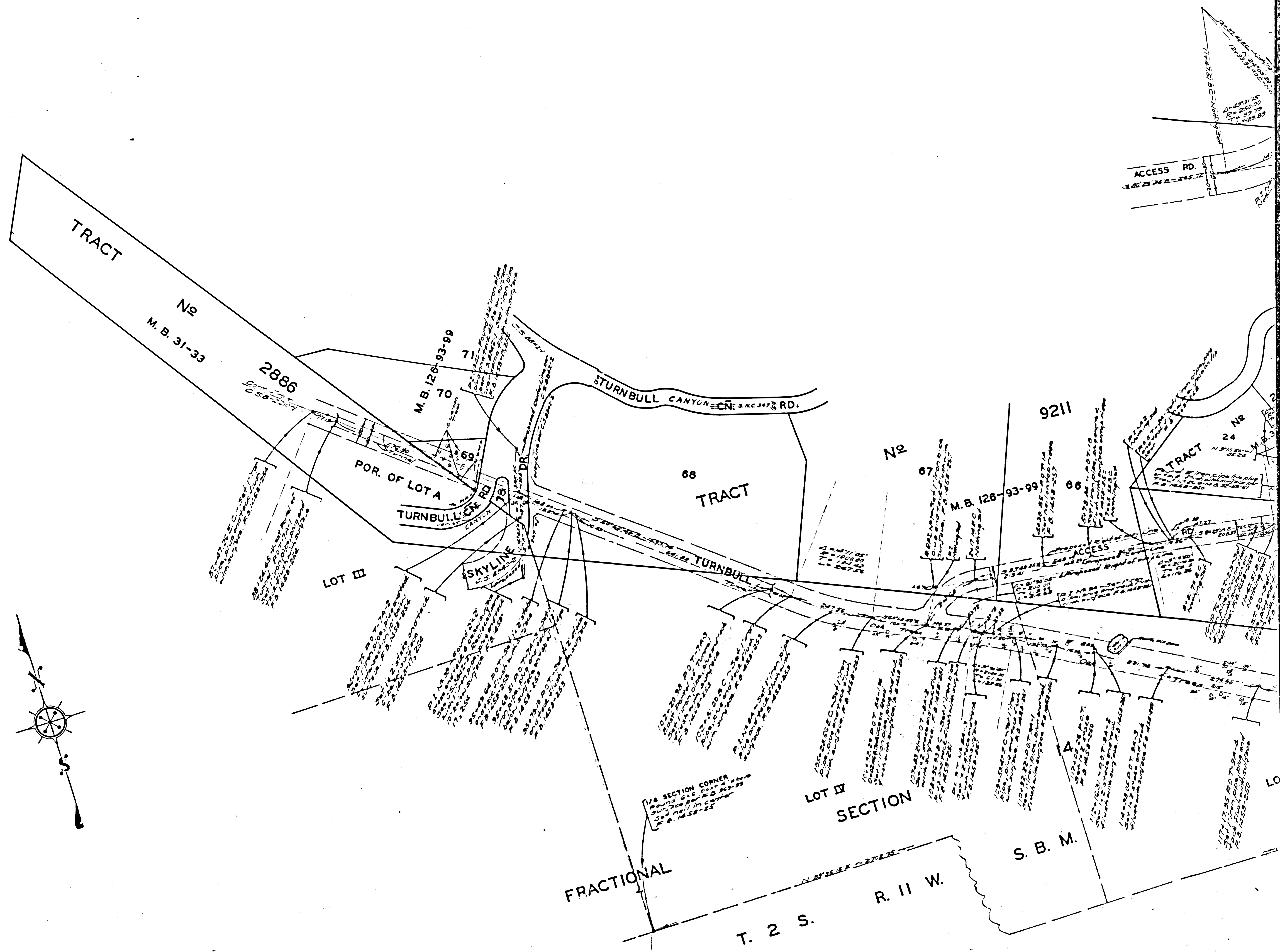
JOB NUMBER 8505  
 C. E. ARNOLD - COUNTY SURVEYOR  
 SURVEYED APR. 1948 - MARCH 1950  
 SURVEYED UNDER INSTRUCTIONS OF THE  
 BOARD OF SUPERVISORS PER ORDER DATED  
 MARCH 9, 1948

BEARINGS ARE BASED ON THE CALIFORNIA  
 COORDINATE SYSTEM, ZONE 7, PER CHAPTER  
 1307, STATUTES 1947. SEE C.S. 9423

F. B. 1458-3-263  
 F. B. 1873-5-32  
 FIELD WORK BY . . . . . D. E. HOLMES  
 OFFICE WORK BY . . . . . C. W. COX  
 CHECKED BY . . . . . A. A. ROESER

CSB-2210-2  
 A10FA3





CSB-2210-2  
A30FA3