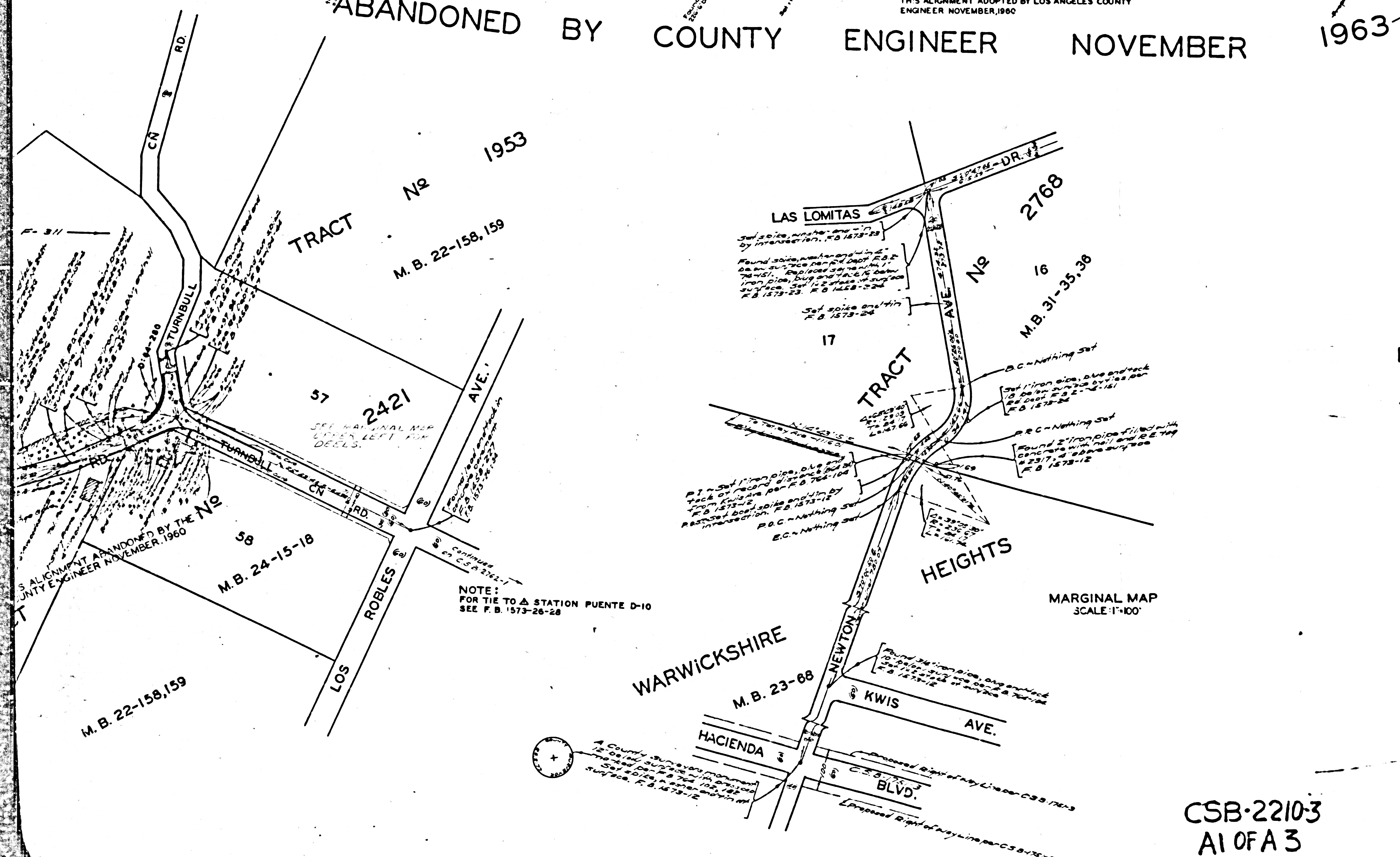
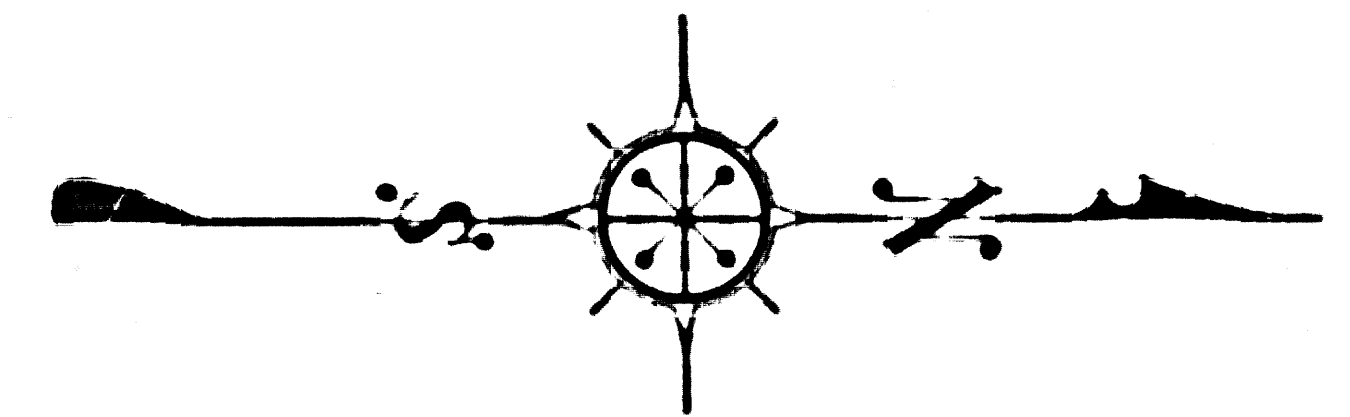


THIS
ALIGNMENT
ABANDONED BY COUNTY ENGINEER
NOVEMBER 1963

MARGINAL MAP
 SCALE: 1" = 50'
 SHOWING TOPOGRAPHY AND PROPOSED
 ALIGNMENT OF TURNBULL CANYON ROAD
 FROM LOS ROBLES AVENUE TO MANZANITA DR.
 THIS ALIGNMENT ADOPTED BY LOS ANGELES COUNTY
 ENGINEER NOVEMBER, 1960



MARGINAL MAP
 SCALE: 1" = 100'



COUNTY OF LOS ANGELES
 MAP OF
TURNBULL CANYON ROAD
 FROM
EASTERLY BOUNDARY, CITY OF WHITTIER
 TO
LOS ROBLES AVENUE
 COUNTY SURVEYORS MAP NO B-2210
 SHEET NO 3 OF 3 SHEETS
 SCALE: 1 INCH = 100 FT.

JOB NUMBER 8505
 C.E. ARNOLD - COUNTY SURVEYOR
 SURVEYED APR. 1948 - MARCH 1950
 SURVEYED UNDER INSTRUCTIONS OF THE
 BOARD OF SUPERVISORS PER ORDER DATED
 MARCH 9, 1948

BEARINGS ARE BASED ON THE CALIFORNIA
 COORDINATE SYSTEM, ZONE 7, PER CHAPTER
 1307, STATUTES 1947. SEE C.S. 9423
 P.B. 1456-3-29J
 P.B. 1573-5-32

FIELD WORK BY D.E. HOLMES
 OFFICE WORK BY C.W. COX
 CHECKED BY A.A. ROESCH

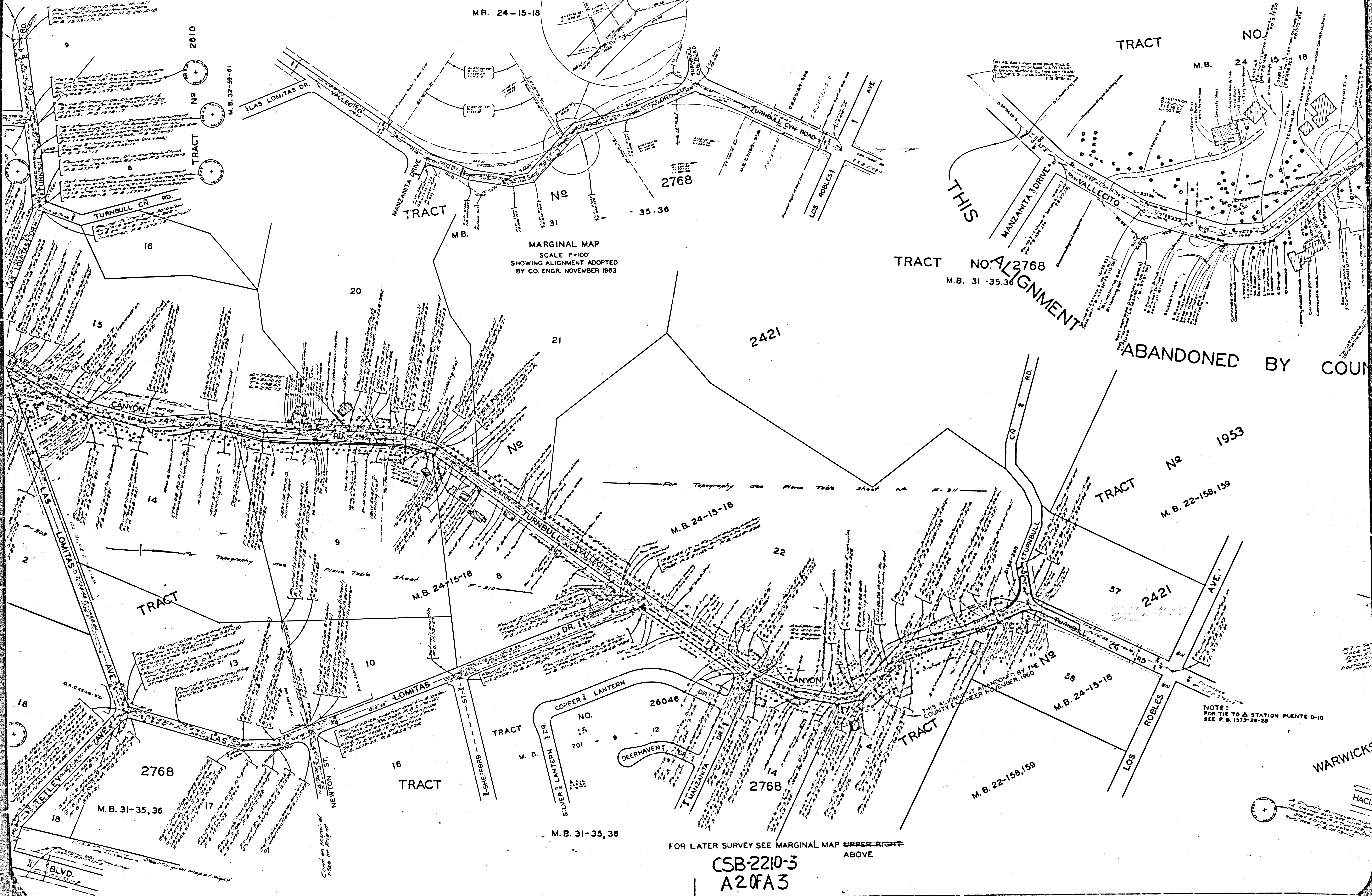
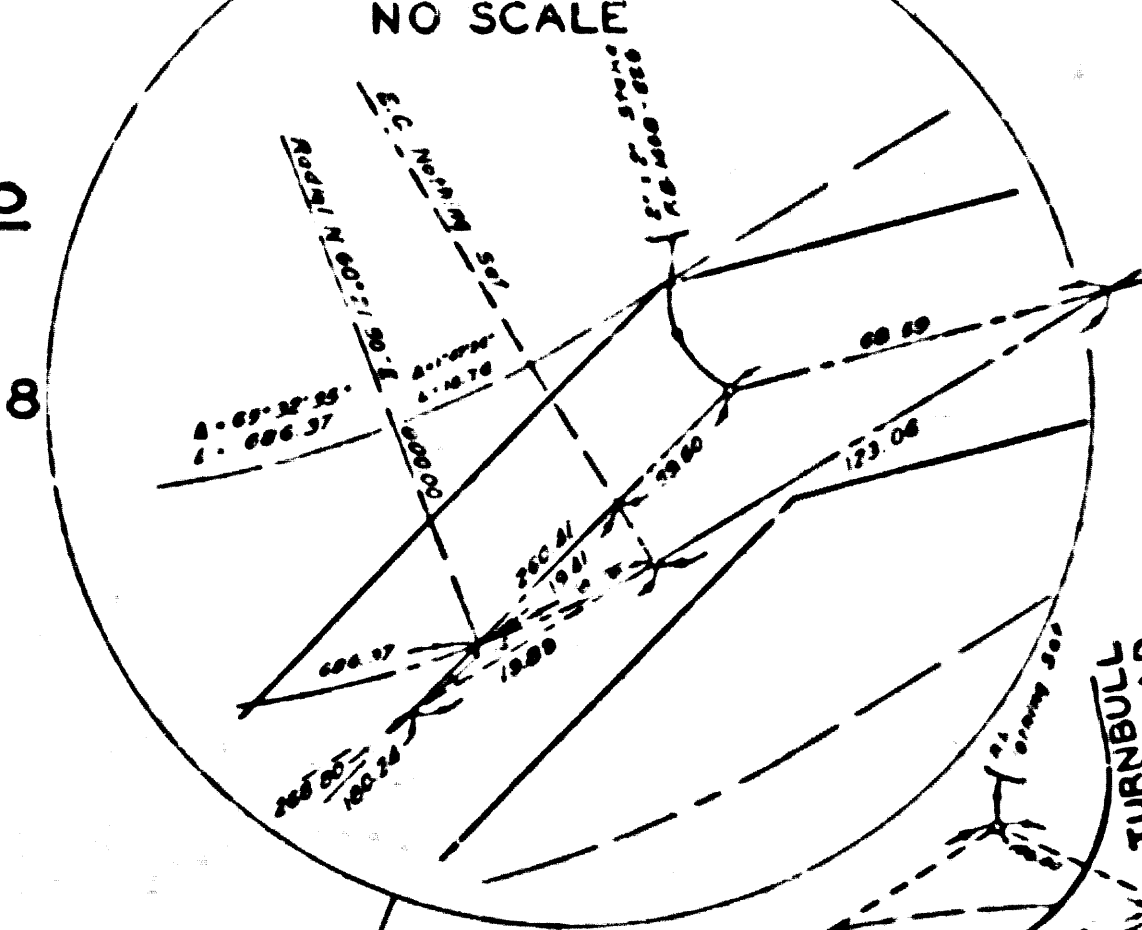
DESIGNED BY C.S. ARNOLD
 DRAWN BY J. B. CLARK
 CHECKED BY A.A. ROESCH
 DATE 11/17/63
 COUNTY ENGINEER
 COUNTY OF LOS ANGELES
 1500 WEST 5TH ST. LOS ANGELES, CALIF. 90012

CSB-2210-3
 A1 OF A 3

COUNTY SURVEYORS MAP NO. B-2210 SHEET NO. 3 OF 3 SHEETS
 COUNTY ENGINEER NOVEMBER 1960

TRACT NO. 2421

M.B. 24-15-18



MARGINAL MAP
SCALE 1"=100'
SHOWING ALIGNMENT ADOPTED
BY CO. ENGR. NOVEMBER 1963

TRACT NO. 2768
M.B. 31-35,36

THIS ALIGNMENT
ABANDONED BY COUNTY ENGINEER

TRACT NO. 1953
M.B. 22-158,159

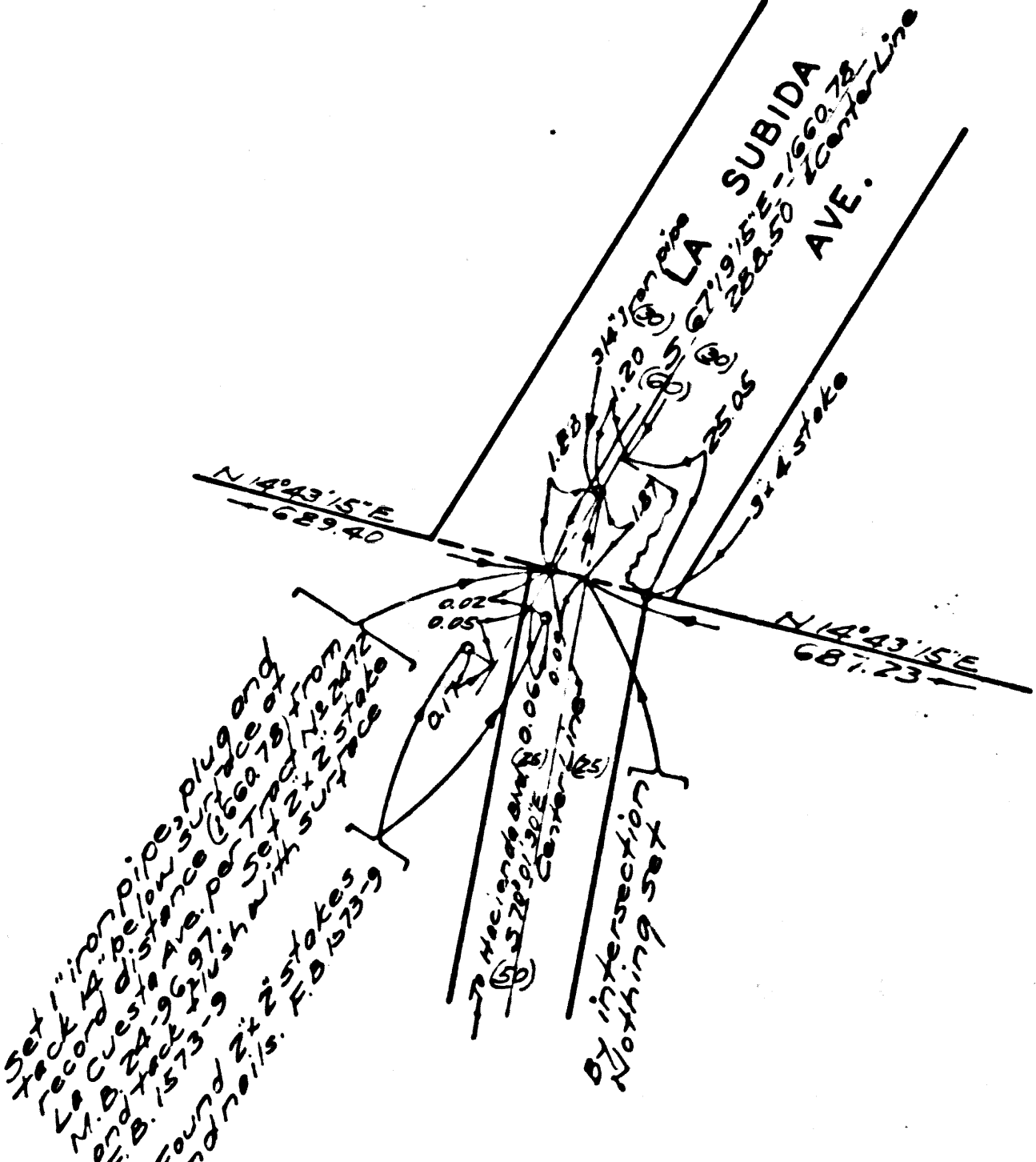
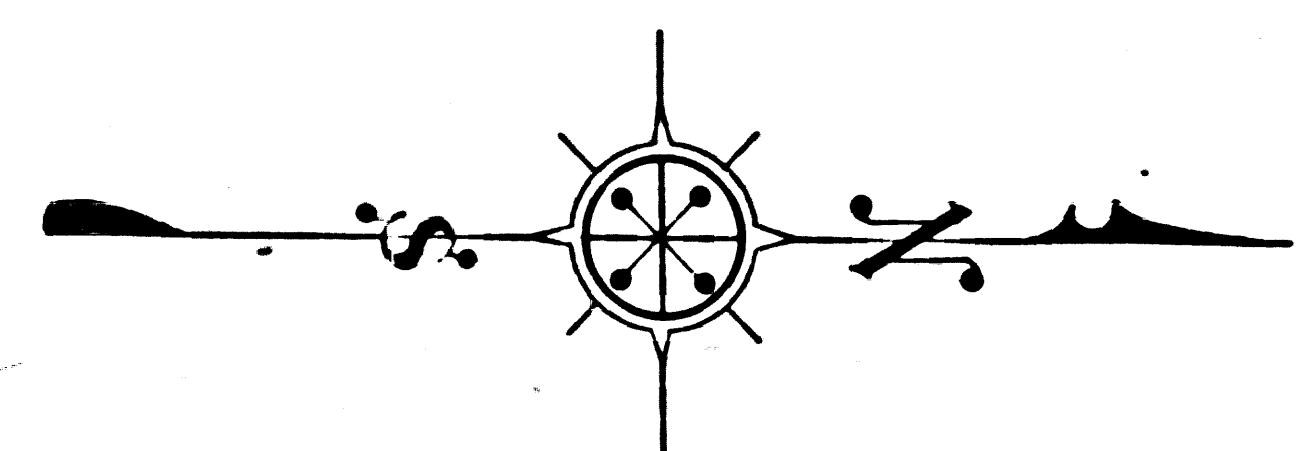
NOTE:
FOR TIE TO STATION PUENTE D-10
SEE P.B. 1573-26-28

FOR LATER SURVEY SEE MARGINAL MAP UPPER RIGHT ABOVE

CSB-2210-3
A2 OF A3

WARWICKS

HACK



MARGINAL MAP
NOT TO SCALE

CSB-2210-3
A3 OF A3

SHEET NO. 3 OF 3