

COUNTY OF LOS ANGELES
 MAP OF
 STREETS IN THE 151ST STREET
 SANITARY SEWER DISTRICT

COUNTY SURVEYORS MAP NO B-2218
 SCALE 1"=100 FT.

JOB NUMBER 8351

C. E. ARNOLD - COUNTY SURVEYOR
 SURVEYED NOV. 1947; SEPT. 1948
 SURVEYED UNDER INSTRUCTIONS OF THE
 BOARD OF SUPERVISORS PER ORDER DATED
 FEB. 26, 1948

BEARINGS ARE BASED ON THE BEARING
 OF COMPTON BLVD. AS SHOWN ON
 TRACT NO 6627 - M.B. 71-64, 65

F. B. 1414-31-60

FIELD WORK BY E. C. WALLACE
 OFFICE WORK BY C. W. COX
 CHECKED BY R. R. MIPHURSON

INDEX 26

THIS SURVEY MADE TO ESTABLISH CENTER LINES ON THE STREETS
 IN THIS AREA PRELIMINARY TO CONSTRUCTION OF SEWERS IN THE
 151ST ST. SANITARY SEWER DISTRICT. (C.I. JOB NO 1230)

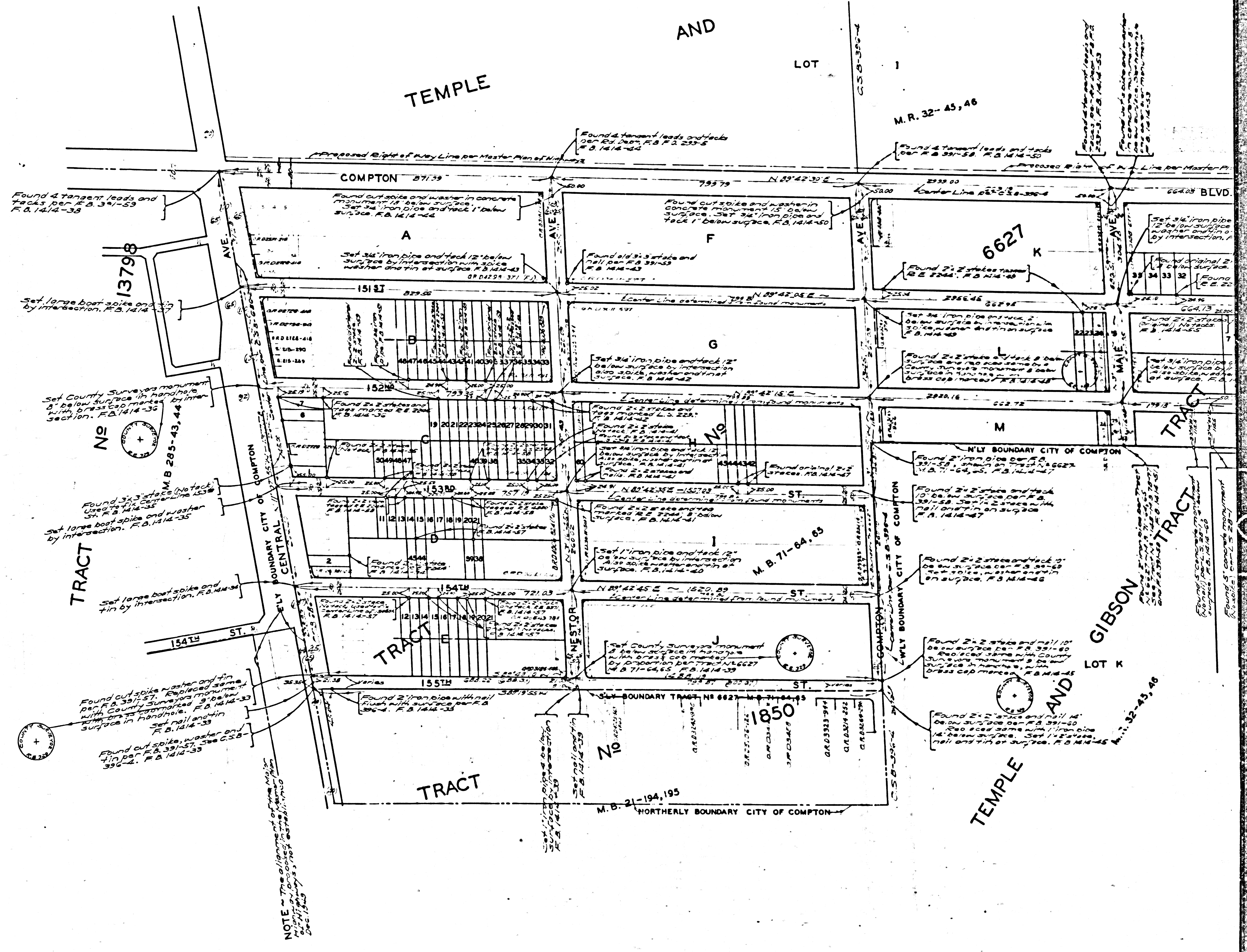
CONILLA SURVEYORS MAP NO. B-5-S-18

CONILLA SURVEYORS MAP NO. B-5-S-18

TRACT

GIBSON

TEMPLE AND LOT



CSB-2218
A2 of A2