

COUNTY OF LOS ANGELES  
 MAP OF  
**STREETS IN THE BURTON AVENUE  
 SANITARY SEWER DISTRICT**

COUNTY SURVEYORS MAP NO B-2220  
 SCALE: 1 INCH = 100 FT.

JOB NUMBER 6351  
 C.E. ARNOLD - COUNTY SURVEYOR  
 SURVEYED MAY 1947 - NOV 1949  
 SURVEYED UNDER INSTRUCTIONS OF THE  
 BOARD OF SUPERVISORS PER ORDER DATED  
 FEB 26, 1948  
 BEARINGS ARE BASED ON THE BEARING OF  
 WALNUT GROVE AVE. AS SHOWN ON  
 C.S.B. 1735-1  
 F. B. 1263-5-23  
 FIELD WORK BY . . . . . J.J. LANIGAN  
 OFFICE WORK BY . . . . . G.W. COX  
 CHECKED BY . . . . . R.R. McPHERSON

INDEX 44-37

THIS SURVEY MADE TO ESTABLISH CENTER LINES ON THE STREETS  
 IN THIS AREA PRELIMINARY TO THE CONSTRUCTION OF SEWERS  
 IN THE BURTON AVE. SANITARY SEWER DISTRICT (C.S. JOB NO 1186)

CSB-2220  
A2 OF A2

SAN GABRIEL BLVD.

WALNUT ST.

BURTON

BARTLETT

MUSCATEL

IVAR

ROSEMEAD

ROSEMEAD

TRACT

TRACT

TRACT

TRACT

TRACT

TRACT

TRACT

TRACT

TRACT

TRACT

TRACT

TRACT

TRACT

TRACT

TRACT

TRACT

TRACT

TRACT

TRACT

TRACT NO. 12492  
HELLMAN AVE.  
M.B. 245-39-41

TRACT NO. 11391  
ROCKHOLD AVE.  
M.B. 205-12-13

TRACT NO. 3752  
M.B. 40-69

TRACT NO. 3706  
M.B. 40-39

TRACT NO. 10732  
M.B. 185-27

TRACT NO. 4778  
M.B. 53-92,93

TRACT NO. 4778  
M.B. 53-92,93

TRACT NO. 4778  
M.B. 53-92,93

TRACT NO. 4778  
M.B. 53-92,93

TRACT NO. 4778  
M.B. 53-92,93

TRACT NO. 4778  
M.B. 53-92,93

TRACT NO. 4778  
M.B. 53-92,93

FRAC. LOT 2  
T.1 S. R.11 W.

PORTION OF SEC. 19  
T.1 S. R. 11 W. S.B.M.

ST. 19 - RANCHO POTRERO GRANDE

GROVE

WALNUT ST.

BURTON

BARTLETT

MUSCATEL

IVAR

ROSEMEAD

TRACT NO. 4778  
M.B. 53-92,93

TRACT NO. 4778  
M.B. 53-92,93

TRACT NO. 4778  
M.B. 53-92,93

TRACT NO. 4778  
M.B. 53-92,93

TRACT NO. 4778  
M.B. 53-92,93

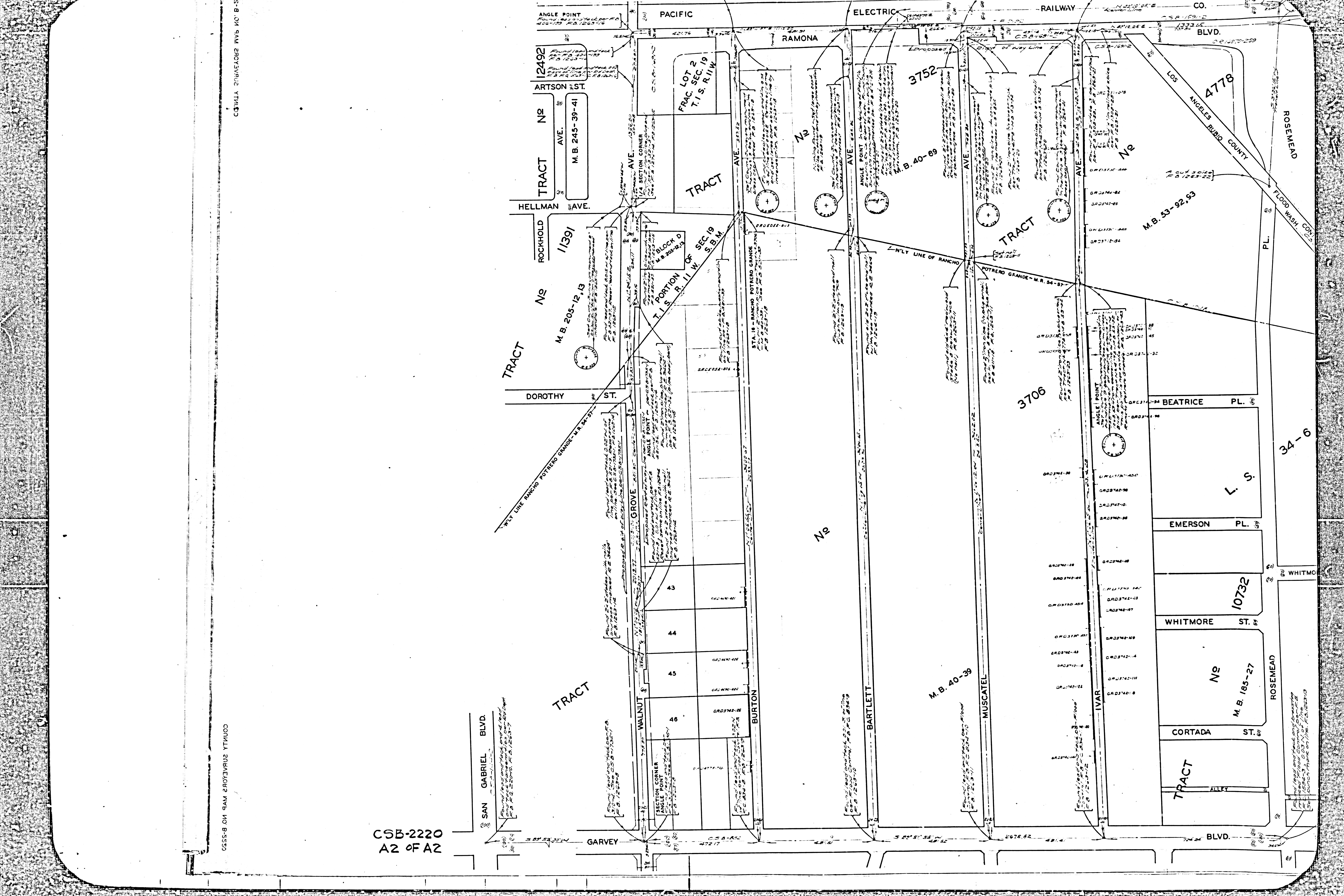
TRACT NO. 4778  
M.B. 53-92,93

TRACT NO. 4778  
M.B. 53-92,93

TRACT NO. 4778  
M.B. 53-92,93

TRACT NO. 4778  
M.B. 53-92,93

TRACT NO. 4778  
M.B. 53-92,93



CONILLA SURVEYORS MAP NO. B-5550