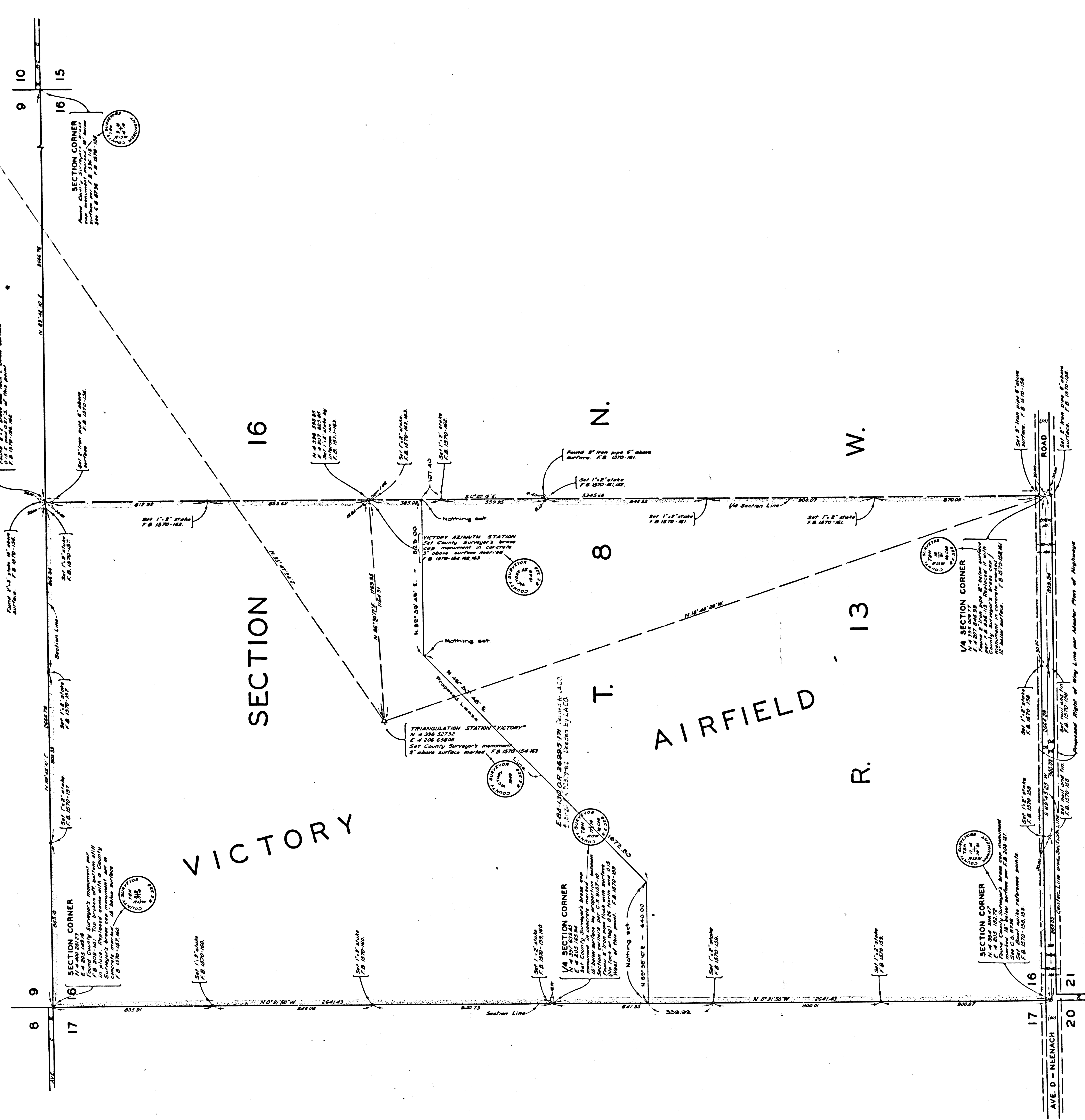


COUNTY OF LOS ANGELES
 MAP OF
VICTORY AIRFIELD
 BEING
 THE WEST HALF OF SECTION 16,
 T.8N., R.13W.-S.B.B.&M.
 COUNTY SURVEYORS MAP NO B-2223
 SCALE: 1 INCH = 200 FT.

JOB NUMBER 8568
 C.E. ARNOLD COUNTY SURVEYOR
 SURVEYED AUG. 1949 - JAN. 1950
 SURVEYED ON REQUEST OF THE DIRECTOR, DEPARTMENT
 OF AVIATION, UNDER SEC. 79, ORD. 4099, BY LETTER DATED
 JULY 18, 1949
 BEARINGS ARE BASED ON THE CALIFORNIA
 COORDINATE SYSTEM ZONE 7, PER CHAPTER
 1307, STATUTES-1947. . . . SEE C.S. 9423

F.B. 1570-155-170
 FIELD WORK BY E. AROSECRANS
 OFFICE WORK BY D. J. STELMA
 CHECKED BY K. R. M'PHERSON

Proposed Leasg Line added Feb. 1952-T.M.



MARGINAL MAP
 SHOWING
TOPOGRAPHY
 SCALE: 1 INCH = 100 FT.

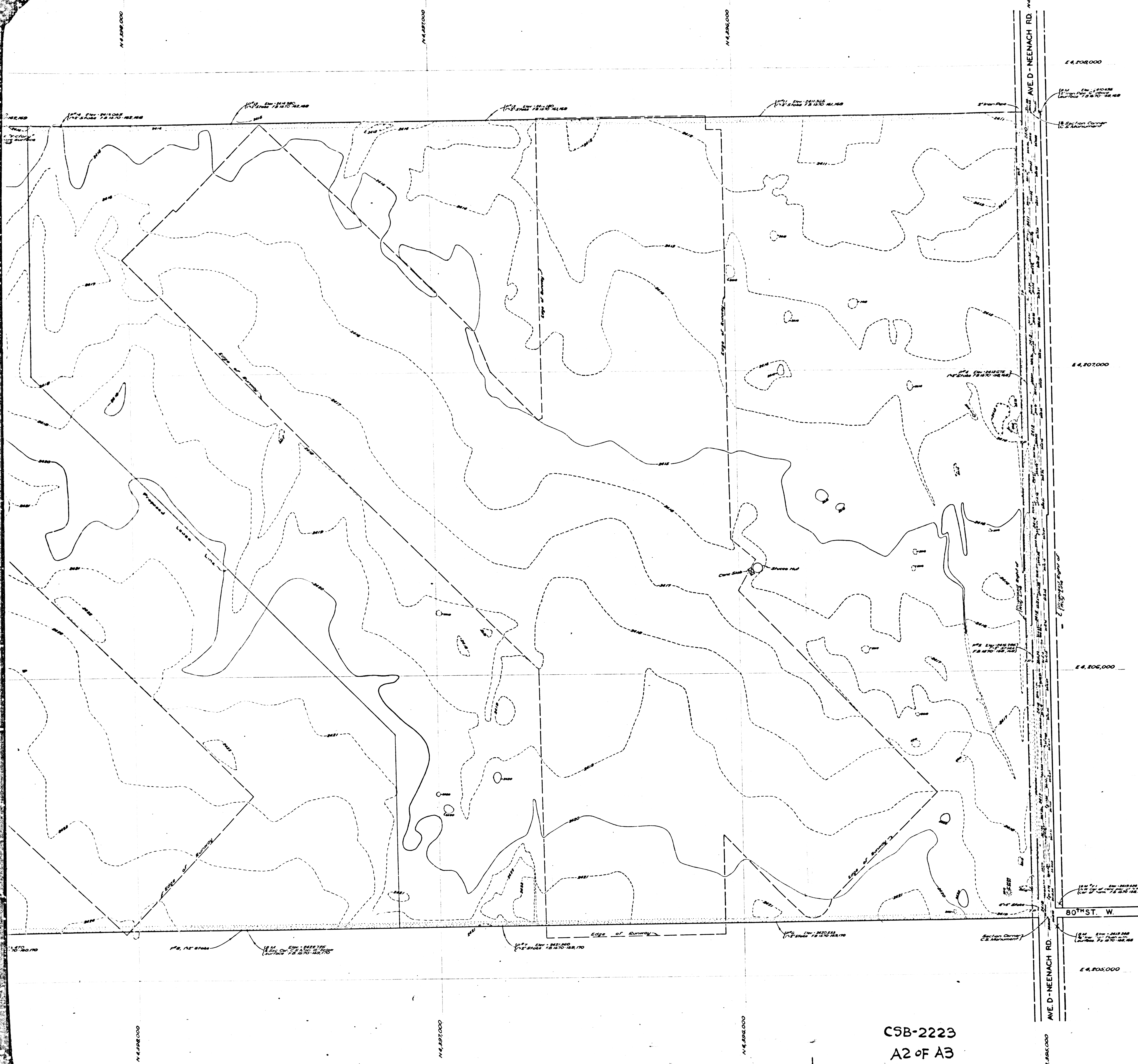
FIELD WORK BY..... R.C. BOWERS
 OFFICE WORK BY..... W.G. VAN DEREN
 J.B. MACOMBER
 C.J. GALLI
 Y. ITO
 CHECKED BY..... D.A. WHITE

PLANE TABLE SHEETS
 E-334, E-335 & E-336

DATUM - MEAN SEA LEVEL
 ELEVATIONS SHOWN HEREON ARE BASED
 ON THE 1929 U.S.C. & G.S. ADJUSTMENT
 OF U.S.M. "R-41-1929" U.S. (664)

CSB-2223
 A1 OF A3

INDEX-71

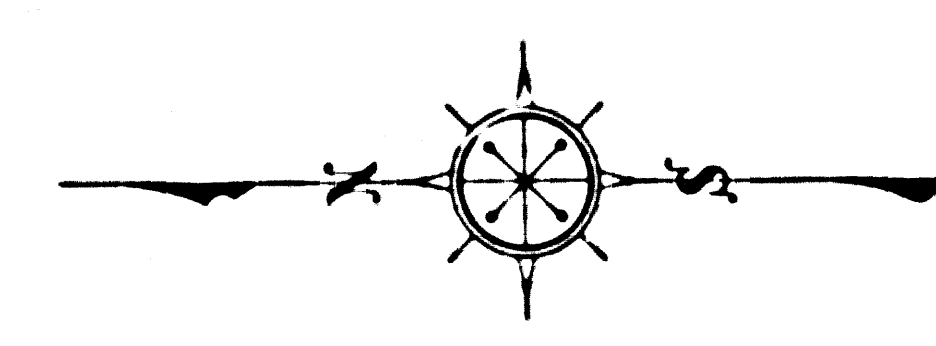


1:25,000
 1:50,000
 1:100,000
 1:200,000
 1:500,000
 1:1,000,000

SECTION CORNER
 1/4 SECTION CORNER
 1/2 SECTION CORNER

SECTION CORNER
 1/4 SECTION CORNER
 1/2 SECTION CORNER

SECTION CORNER
 1/4 SECTION CORNER
 1/2 SECTION CORNER

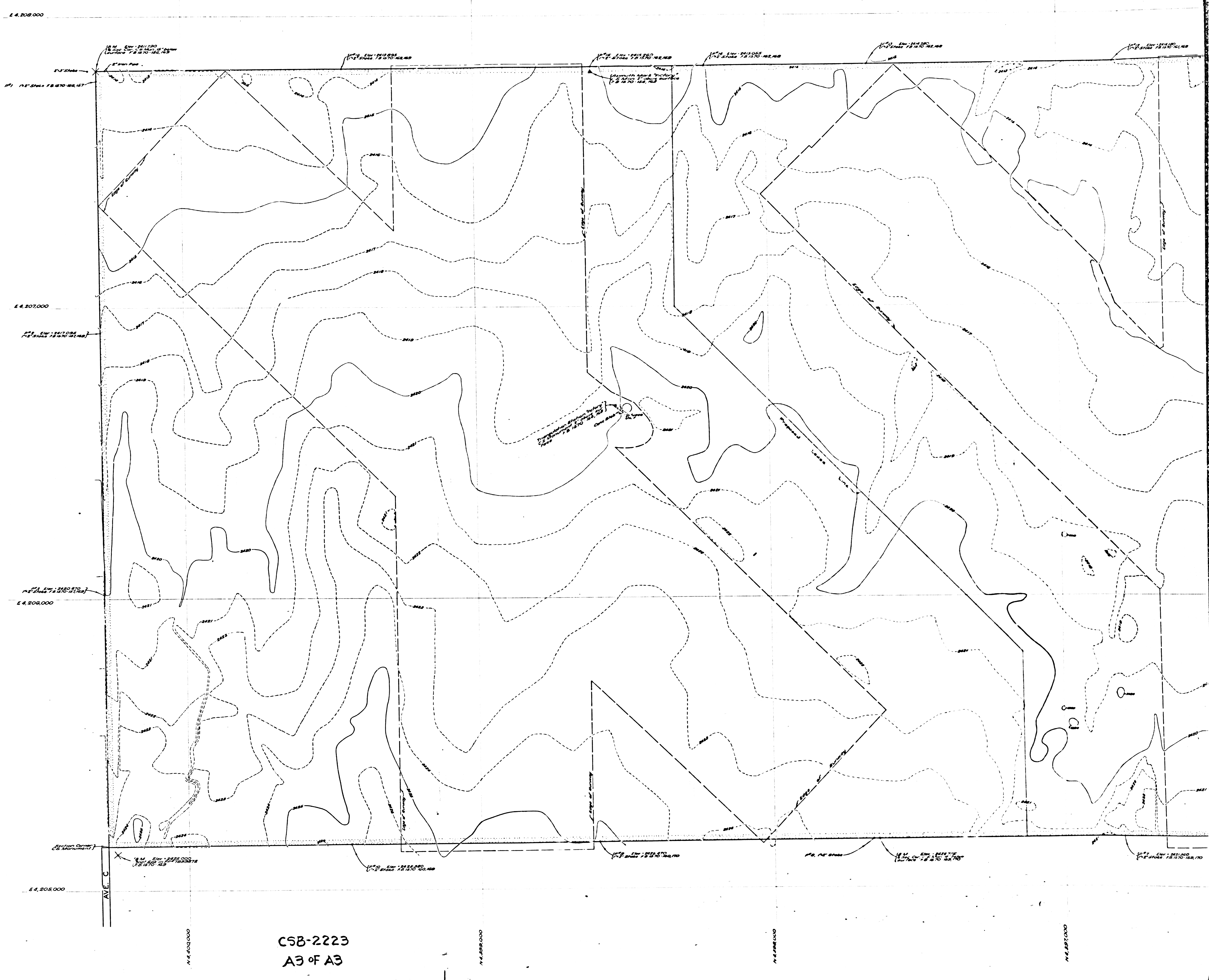


**MARGINAL MAP
 SHOWING
 TOPOGRAPHY**
 SCALE: 1 INCH = 100 FT.
 FIELD WORK BY..... R.C. BOWERS
 OFFICE WORK BY..... W.G. VAN DEREN
 J.B. MACOMBER
 C.J. GALLI
 Y. ITO
 CHECKED BY..... D.A. WHITE
 PLANE TABLE SHEETS
 E-334, E-335 & E-338

DATUM - MEAN SEA LEVEL
 ELEVATIONS SHOWN HEREON ARE BASED
 ON THE 1928 U.S.C. & G.S. ADJUSTMENT
 OF U.S.M. TR-41-1928 U.S. 0040

SECTION 16
 VICTORY

CSB-2223
 A2 OF A3



CSB-2223
A3 OF A3