

COUNTY OF LOS ANGELES
 MAP OF
**STREETS IN THE EL CAMINO AVENUE
 SANITARY SEWER DISTRICT**

COUNTY SURVEYORS MAP NO. B-2224
 SCALE: 1 INCH = 100 FT.

JOB NUMBER 8331

C. E. ARNOLD - COUNTY SURVEYOR
 SURVEYED APRIL 1947 - SEPT. 1948

SURVEYED UNDER INSTRUCTIONS OF THE
 BOARD OF SUPERVISORS PER ORDER DATED
 FEBRUARY 26, 1946.

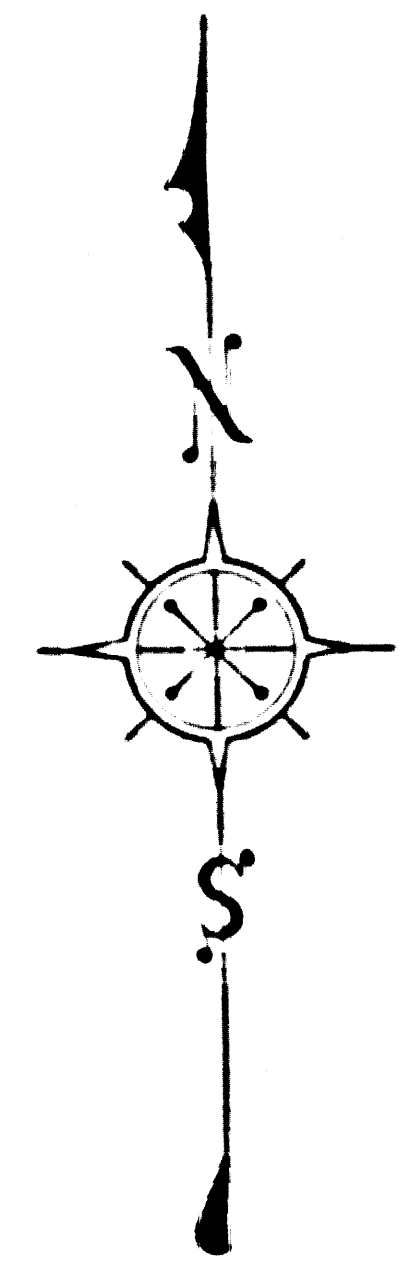
BEARINGS ARE BASED ON THE BEARING OF
 ROSECRANS AVENUE PER - C. S. B-1644-7

F. B. 1256-192-256.

FIELD WORK BY C. V. CRUMLEY
 J. L. WILEY
 OFFICE WORK BY T. M. ICHIKI
 CHECKED BY A. A. ROESER

Index 37
 Revised February 1951

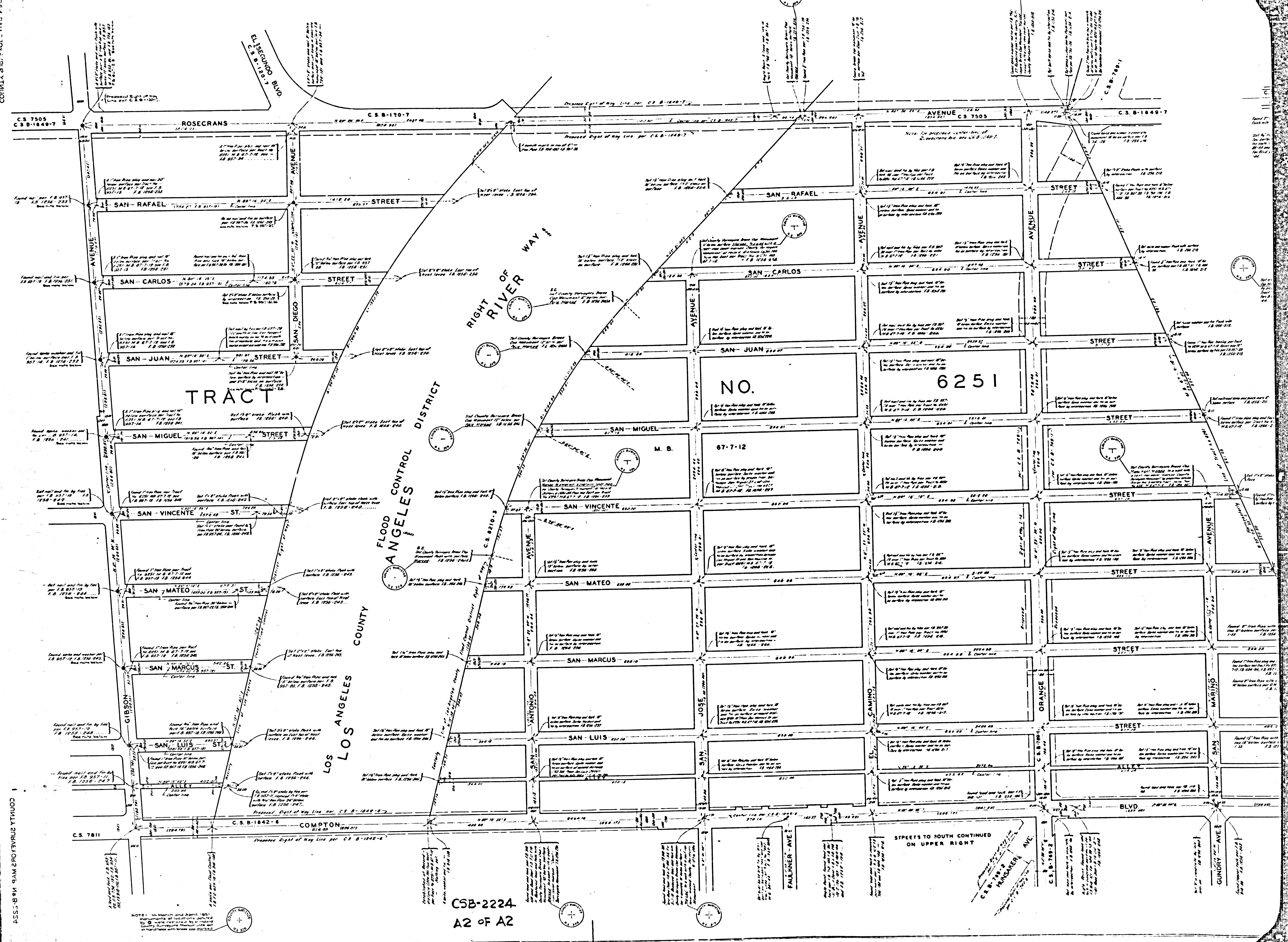
THIS SURVEY MADE TO ESTABLISH CENTER LINES OF
 THE STREETS IN THIS AREA PRELIMINARY TO CONSTRUCTION
 OF SEWERS IN THE EL CAMINO AVE. ET AL. SANITARY SEWER
 DISTRICT. C. I. JOB NUMBER 1189



COMPLA 2194E 2194E 2194E 2194E

COMPLA 2194E 2194E 2194E 2194E

COMPLA DEVELOPERS MAP, N.B. B-1555



NOTES: In March and April, 1991
 relocations of locations marked
 by 'X' were corrected by 'O' marked
 County Surveyor's Manual Line and
 'X' marked with same case number.

CSB-2224
 A2 of A2

COMPLA DEVELOPERS MAP, N.B. B-1555