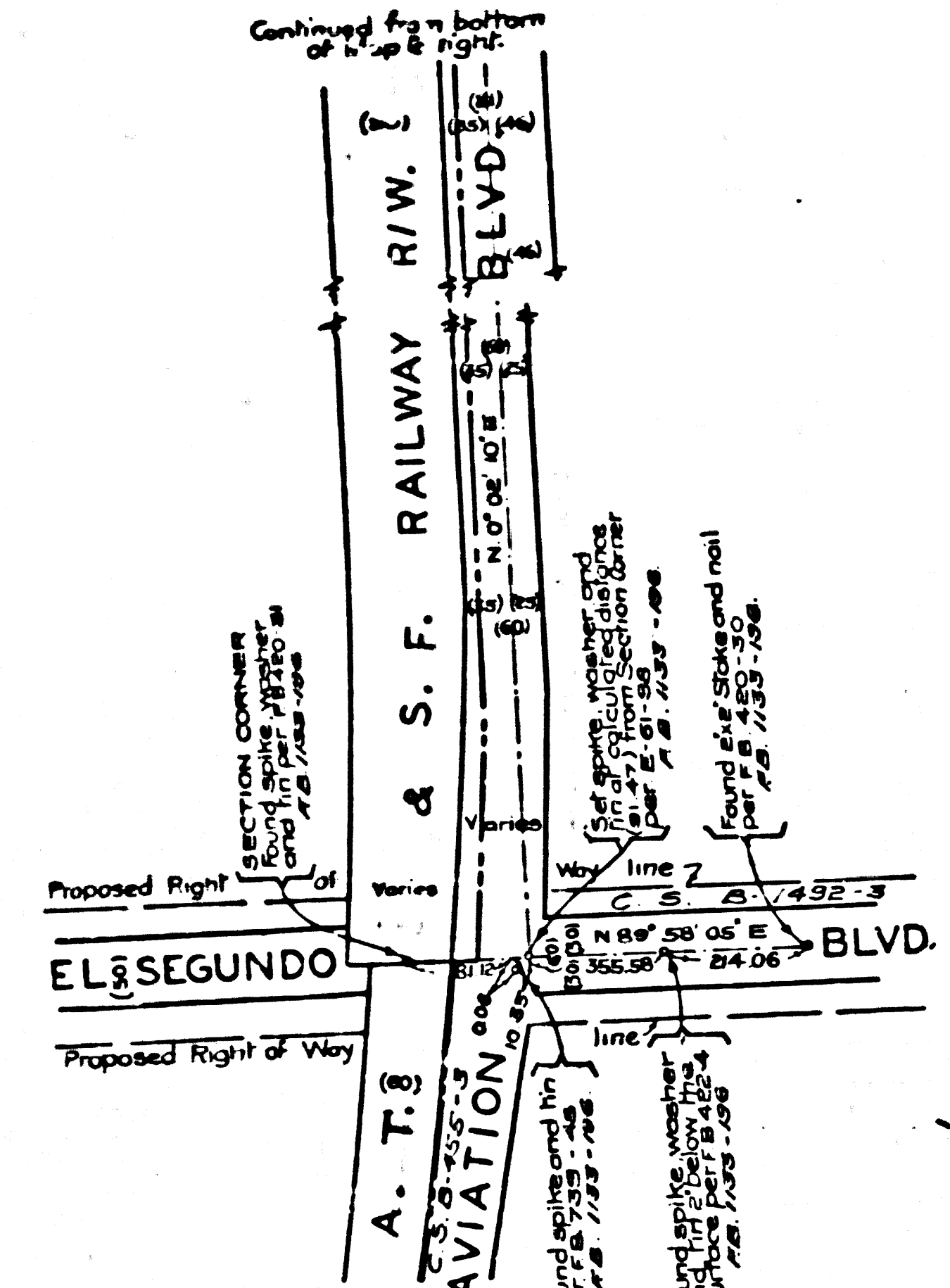


COUNTY OF LOS ANGELES
 MAP OF
**STREETS IN THE ISIS AVENUE
 SANITARY SEWER DISTRICT**
 COUNTY SURVEYORS MAP NO. B-2225
 SCALE - 1. INCH = 100 FT.

JOB NUMBER 8381
 C. E. ARNOLD - COUNTY SURVEYOR
 SURVEYED APRIL - JUNE 1945
 SURVEYED UNDER INSTRUCTIONS OF THE
 BOARD OF SUPERVISORS PER ORDER DATED
 FEB. 26 - 1946
 BEARINGS ARE BASED ON THE BEARING OF
 ANZA AVE AS SHOWN ON C. S. B. 1633 - 2
 P. B. 1133 - 155 - 245.
 FIELD WORK BY... R. L. WILLEY.
 OFFICE WORK BY... A. A. ROESER.
 CHECKED BY... M. M. HIGGINS.
 CHECKED BY... A. A. ROESER.

THIS SURVEY MADE TO ESTABLISH CENTER LINES ON THE STREETS
 IN THIS AREA PRELIMINARY TO CONSTRUCTION OF SEWERS IN THE
 ISIS AVENUE SANITARY SEWER DISTRICT (C. I. JOB NO. 1123.)
 Revised & Monuments added July 4, 1951.



CSB-2225
 AI OF AI