

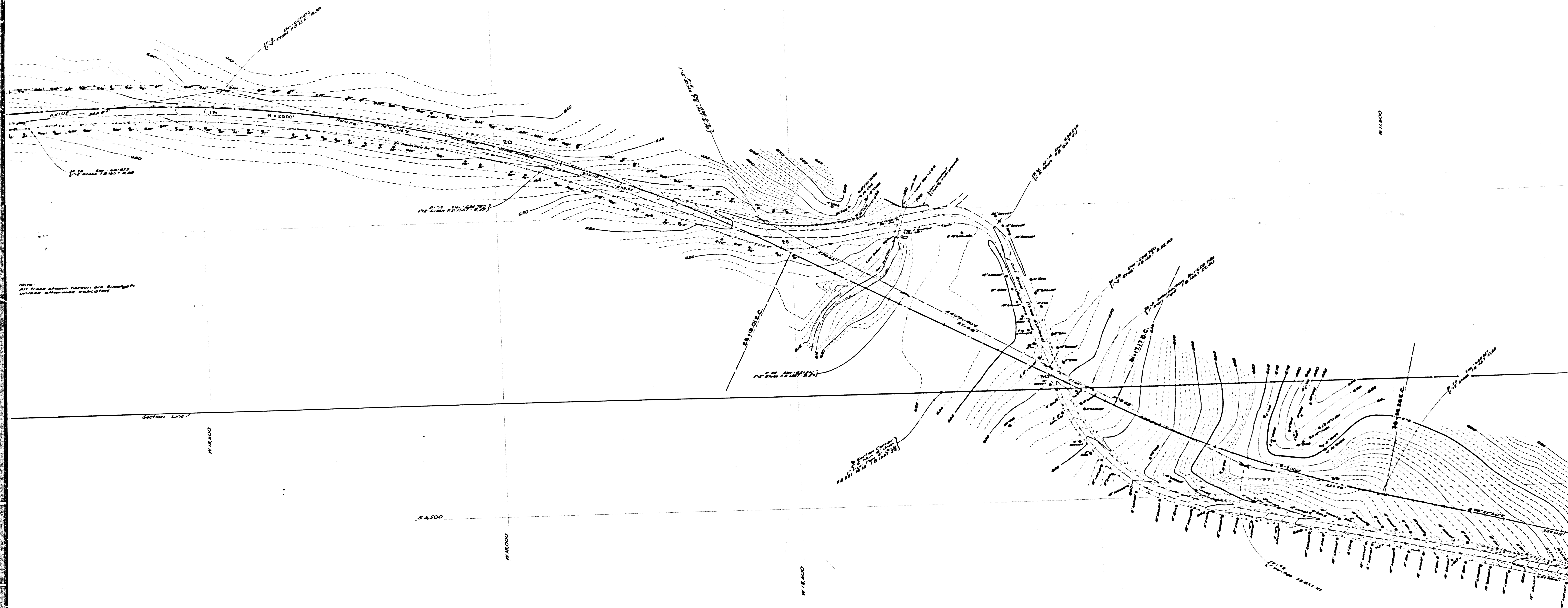
COUNTY OF LOS ANGELES  
 TOPOGRAPHIC MAP OF  
**MULHOLLAND HIGHWAY**  
 FROM  
 LAS VIRGENES ROAD  
 TO  
 EXISTING MULHOLLAND DRIVE  
 AT LOS ANGELES CITY BOUNDARY  
 COUNTY SURVEYORS MAP NO B-2226  
 SHEET NO 1 OF 10 SHEETS  
 SCALE: 1 INCH = 50 FT.

JOB NUMBER 8551  
 C.E. ARNOLD - COUNTY SURVEYOR  
 SURVEYED DEC 1949 TO JUNE 1952  
 SURVEYED ON REQUEST OF THE ROAD  
 COMMISSIONER, UNDER SEC. 78, ORD.  
 4099, BY LETTERS DATED APRIL 6, 1949  
 AND MAY 7, 1951.  
 BEARINGS ARE BASED ON THE  
 BEARING OF MULHOLLAND HIGHWAY  
 PER C.S. 8824-15  
 PLANE TABLE SHEETS  
 G-294 TO G-296 INCL.  
 F.B. 957  
 FIELD WORK BY F.H. BLANCHARD  
 D.S. WALTERS  
 OFFICE WORK BY W.G. VAN DEREN  
 J.B. MACOMBER  
 Y. ITO  
 CHECKED BY R.E. SNYDER

Note  
 Stations shown thus  $\circ$  and  $\bullet$  and  $\bullet$  and  $\bullet$   
 L.C. stations and intermediate points are  
 alignment map stations  
 Encircled stations are earthwork stations

DATUM - MEAN SEA LEVEL  
 ELEVATIONS SHOWN HEREON ARE BASED UPON BM "34-M"  
 AND BM "35-M" WHICH ARE 2.112 ±' THE ELEVATION OF WHICH  
 WAS DETERMINED FROM U.S.C. & G.S. BM (U.S. 1300) AND CO. SUR.  
 BM U.S. 1303, BASED UPON THE U.S.C. & G.S. ADJUSTMENT OF 1928.  
 THIS MAP FILED ... APRIL, 1953  
 WILLIAM J. FOX - COUNTY SURVEYOR  
 FOR ALIGNMENT SEE C.S.B-2336-1

C5B-2226-1  
 A1 OF A3



CSB-2226-1  
A2 of A3

