



COUNTY OF LOS ANGELES  
 TOPOGRAPHIC MAP OF  
**MULHOLLAND HIGHWAY**  
 FROM  
 LAS VIRGENES ROAD  
 TO  
 EXISTING MULHOLLAND DRIVE  
 AT LOS ANGELES CITY BOUNDARY  
 COUNTY SURVEYOR'S MAP NO. B-2226  
 SHEET NO. 2 OF 10 SHEETS  
 SCALE: 1 INCH = 50 FT.

JOB NUMBER 8551  
 C.E. ARNOLD - COUNTY SURVEYOR  
 SURVEYED DEC. 1949 TO JUNE 1952  
 SURVEYED ON REQUEST OF THE ROAD  
 COMMISSIONER UNDER SEC. 79, ORD.  
 4099, BY LETTERS DATED APRIL 6, 1949  
 AND MAY 7, 1951.  
 BEARINGS ARE BASED ON THE  
 BEARING OF MULHOLLAND HIGHWAY  
 PER C.S. 8824-15  
 PLANE TABLE SHEETS  
 G-298 TO G-299 INCL.  
 F.B. 857  
 FIELD WORK BY..... J. MENNIE  
 D.S. WALTERMIRE  
 OFFICE WORK BY..... W.G. VAN DEREN  
 J.B. MACOMBER  
 C.J. GALLI  
 CHECKED BY..... L. DETILLA

DATUM - MEAN SEA LEVEL  
 ELEVATIONS SHOWN IN PARENTHESIS ARE BASED UPON B.M. 34-M  
 AND B.M. 13-M. THE ELEVATION OF WHICH  
 WAS DETERMINED FROM U.S.G.S. B.M. (U.S. 1901) AND C.O. SUR.  
 B.M. U.S. 1303, BASED UPON THE U.S.C.G.S. ADJUSTMENT OF 1903.

THIS MAP FILED..... APRIL, 1953  
 WILLIAM J. FOX - COUNTY SURVEYOR  
 FOR ALIGNMENT SEE C.S.B-2336-1

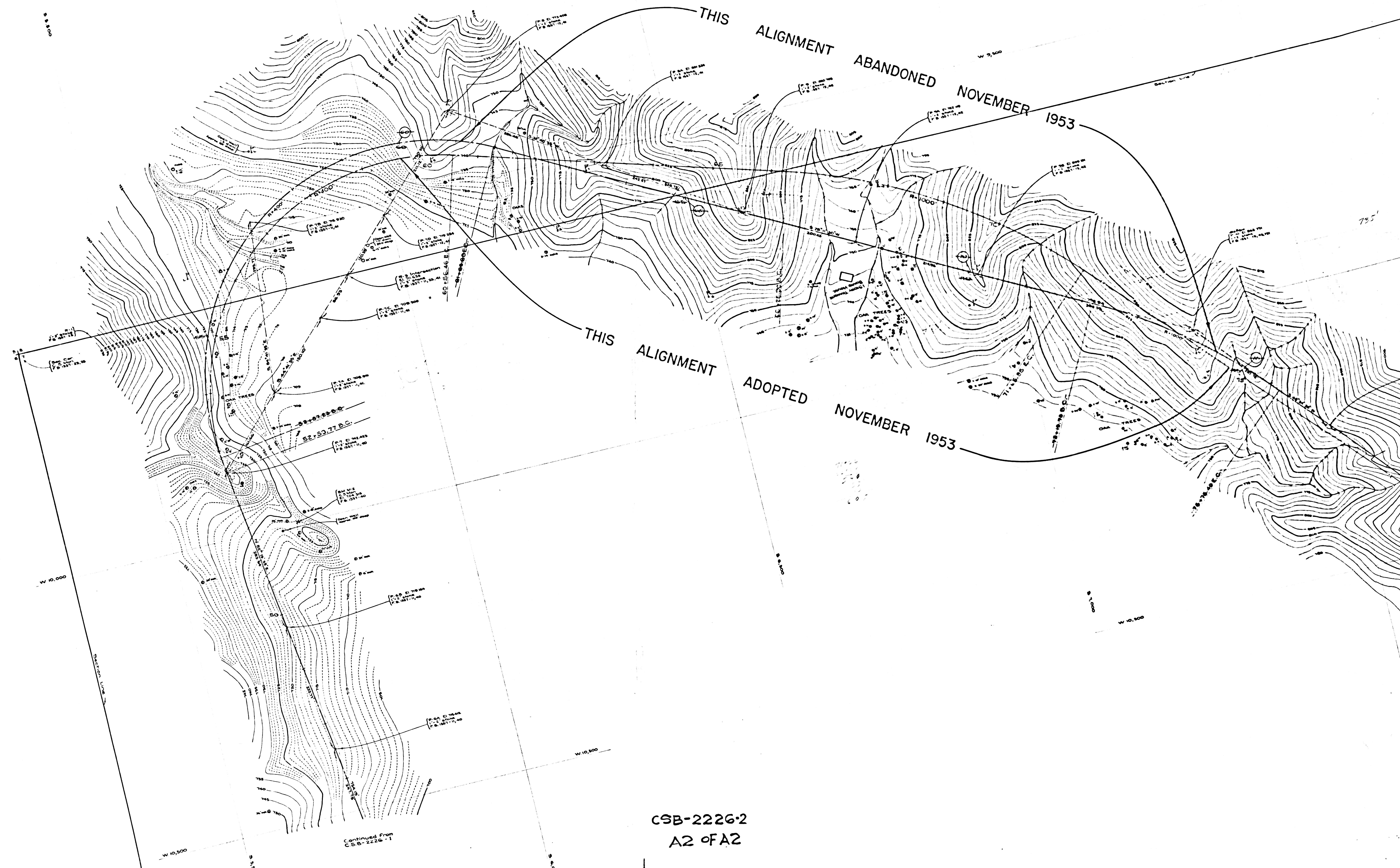
Notes:  
 90  
 Stations shown thus — and B.C. and  
 E.C. stations and intermediate points are  
 alignment map stations.  
 Encircled stations are earthwork stations.

CSB-2226-2  
 A1 of A2

ALTERNATE LOCATION CONTINUED  
 FROM C.S.B-2226 Sheet 10

COUNTY SURVEYOR'S MAP NO. B-2226

COUNTY SURVEYOR'S MAP NO. B-2226



CSB-2226-2  
A2 of A2

Continued from  
CSB-2226-1