

COUNTY OF LOS ANGELES
TOPOGRAPHIC MAP OF
MULHOLLAND HIGHWAY
FROM
LAS VIRGENES ROAD

EXISTING MULHOLLAND DRIVE
AT LOS ANGELES CITY BOUNDARY
COUNTY SURVEYORS MAP NO. B-2226
SHEET NO. 3 OF 10 SHEETS
SCALE: 1 INCH = 50 FT.

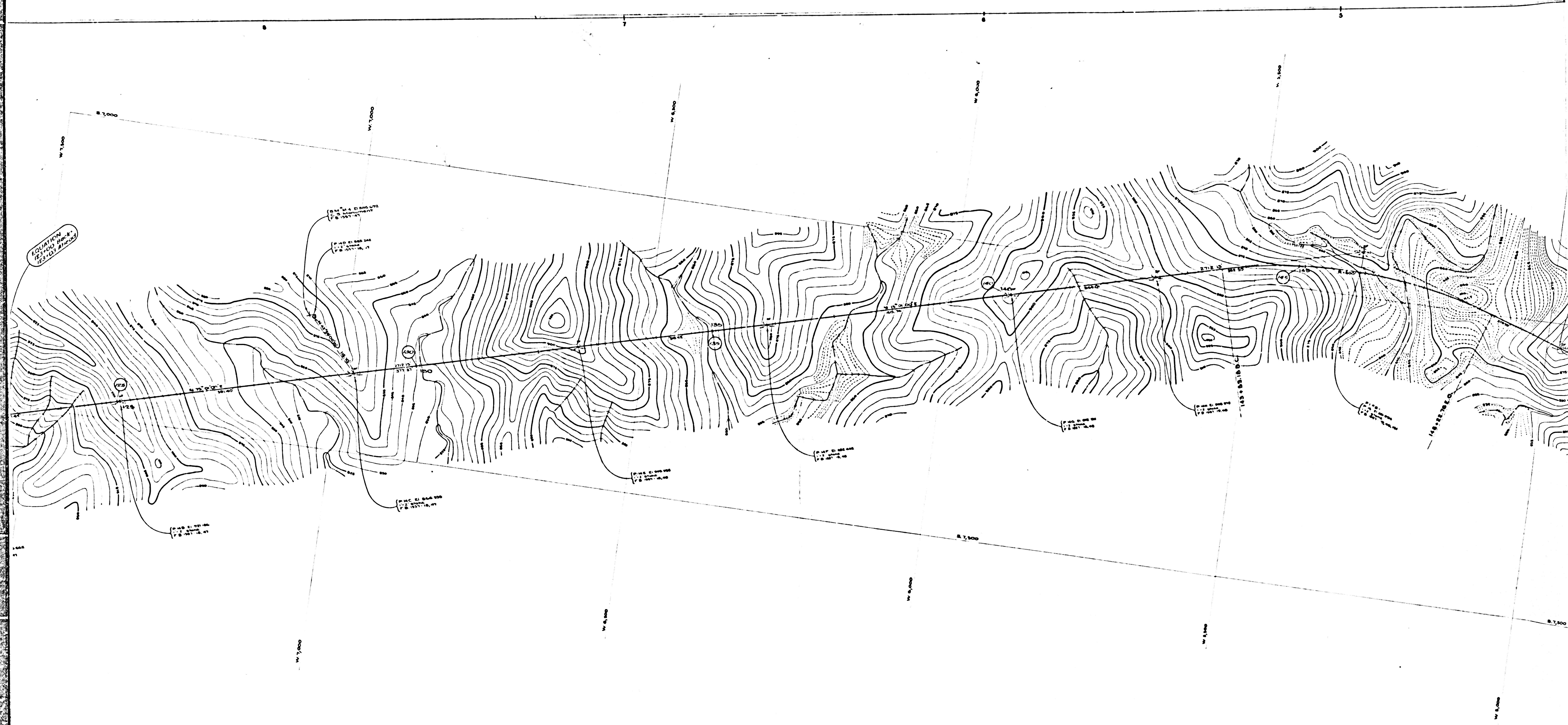
JOB NUMBER 8551
C.E. ARNOLD - COUNTY SURVEYOR
SURVEYED DEC 1949 TO JUNE 1952
SURVEYED ON REQUEST OF THE ROAD
COMMISSIONER UNDER SEC. 79 ORD.
4099, BY LETTERS DATED APRIL 8, 1949
AND MAY 1, 1951.
BEARINGS ARE BASED ON THE
BEARING OF MULHOLLAND HIGHWAY
PER C.S. 8624-B
PLANE TABLE SHEETS
G-299 TO G-302 INCL.
E.B. 857
FIELD WORK BY..... F.H. BLANCHARD
J. MENNE
D.S. WALTERHIRE
OFFICE WORK BY..... W.G. VAN DEREN
C.J. GALLI
CHECKED BY..... D.A. WHITE

DATUM - MEAN SEA LEVEL
ELEVATIONS SHOWN HEREON ARE BASED UPON B.M. 2414
AND B.M. 7314. THE ELEVATION OF WHICH
WAS DETERMINED FROM U.S.C. & G.S. B.M. (U.S. 1300) AND CO. B.M.
8415 (U.S. 1305), BASED UPON THE U.S.C. & G.S. ADJUSTMENT OF 1928.

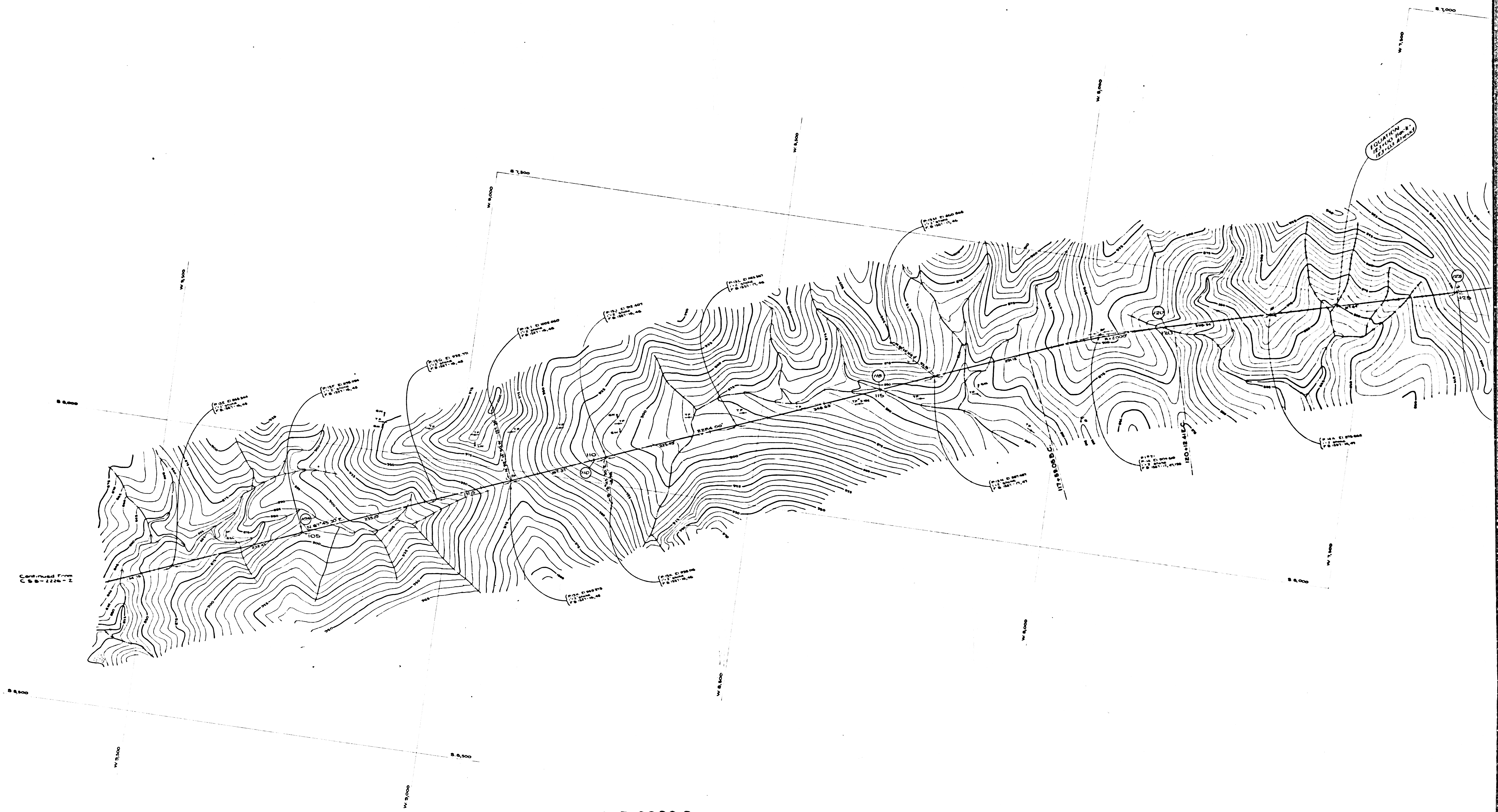
THIS MAP FILED..... APRIL, 1953
WILLIAM J. FOX - COUNTY SURVEYOR
FOR ALIGNMENT SEE C.S. B-2338-12

NOTE
Stations shown as ——— are IGS
and PC and
LC stations and intermediate points are
at present map stations
Encircled stations are utility stations

CSB-2226-3
A1 OF A3



CSB-2226-3
A2 of A3



Continued from
C. S. 2226-2

CSB-2226-3
A3 of A3