

COUNTY OF LOS ANGELES
TOPOGRAPHIC MAP OF
MULHOLLAND HIGHWAY
FROM
LAS VIRGENES ROAD
TO
EXISTING MULHOLLAND DRIVE
AT LOS ANGELES CITY BOUNDARY
COUNTY SURVEYORS MAP NO. B-2226
SHEET NO. 4 OF 10 SHEETS
SCALE: 1 INCH = 50 FT.

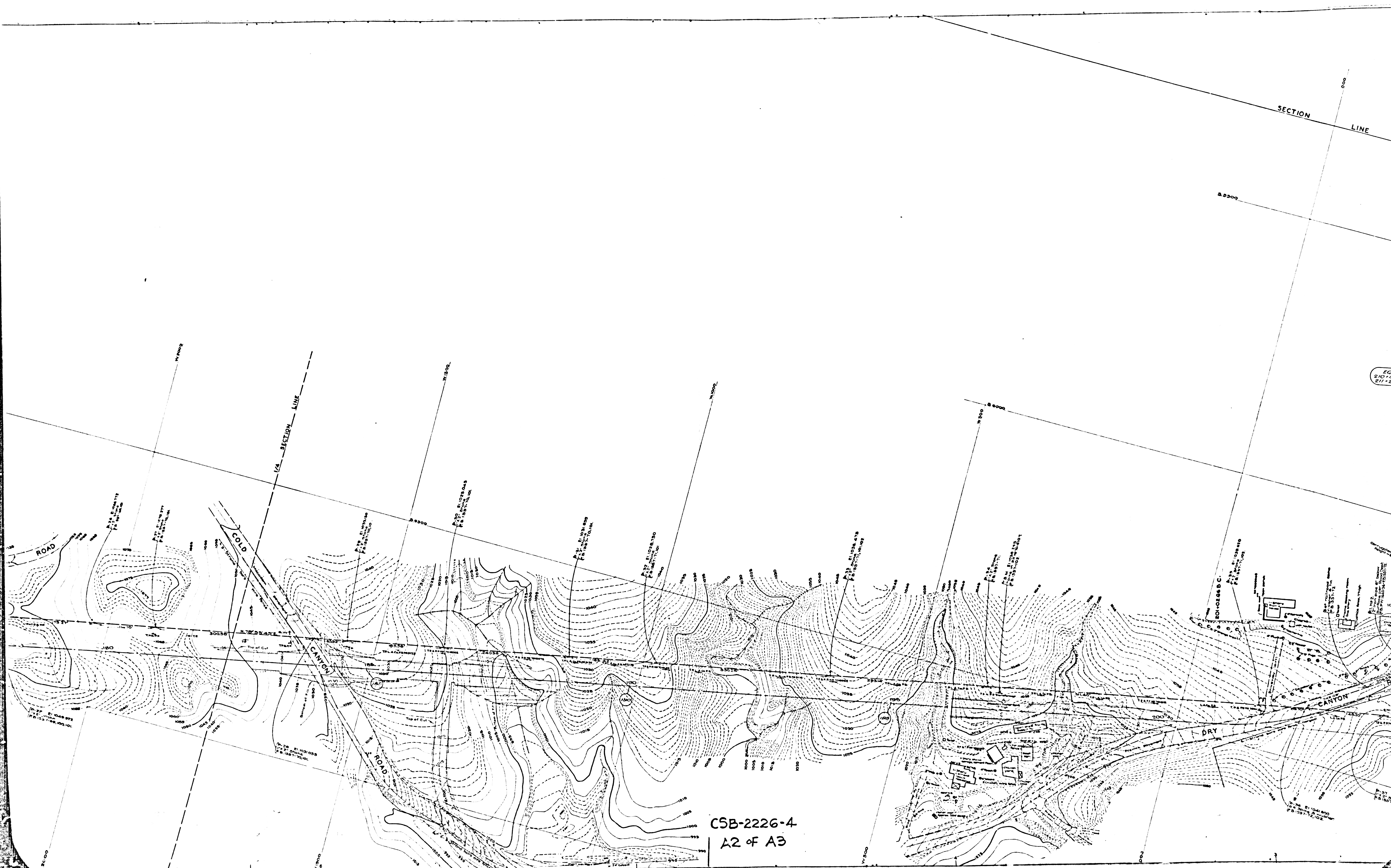
JOB NUMBER 8551
C.E.ARNOLD - COUNTY SURVEYOR
SURVEYED DEC. 1948 TO JUNE, 1952
SURVEYED ON REQUEST OF THE ROAD
COMMISSIONER UNDER SEC. 79, ORD.
4099, BY LETTERS DATED APRIL 6, 1949
AND MAY 7, 1951.
BEARINGS ARE BASED ON THE
BEARING OF MULHOLLAND HIGHWAY,
PER C.S. 8824-15
PLANE TABLE SHEETS
G-302, G-303, G-310, G-311,
F.B. 1957
FIELD WORK BY..... F.H. BLANCHARD
R.C. BOWERS
D.S. WALTERS
OFFICE WORK BY..... H.D. HEBER
W.G. VAN DEREN
C.E. WHITE
D.A. WHITE
CHECKED BY..... H.D. HEBER

DATUM - MEAN SEA LEVEL
ELEVATIONS SHOWN HEREON ARE BASED UPON B.M. 134 M*
AND B.M. 113-M* IN 1929, THE ELEVATION OF WHICH
WAS DETERMINED FROM U.S.C.S. B.M. (U.S. 1300) AND CO. SUR.
B.M. (U.S. 1303), BASED UPON THE U.S.C. & G.S. ADJUSTMENT OF 1928.

THIS MAP FILED..... APRIL, 1953
WILLIAM J. FOX - COUNTY SURVEYOR
FOR ALIGNMENT SEE C.S.B-2336-2

Note:
Stations shown thus 210 and BC and
EC stations and intermediate points are alignment
map stations.
Encircled stations are earthwork stations.

CSB-2226-4
A1 of A3

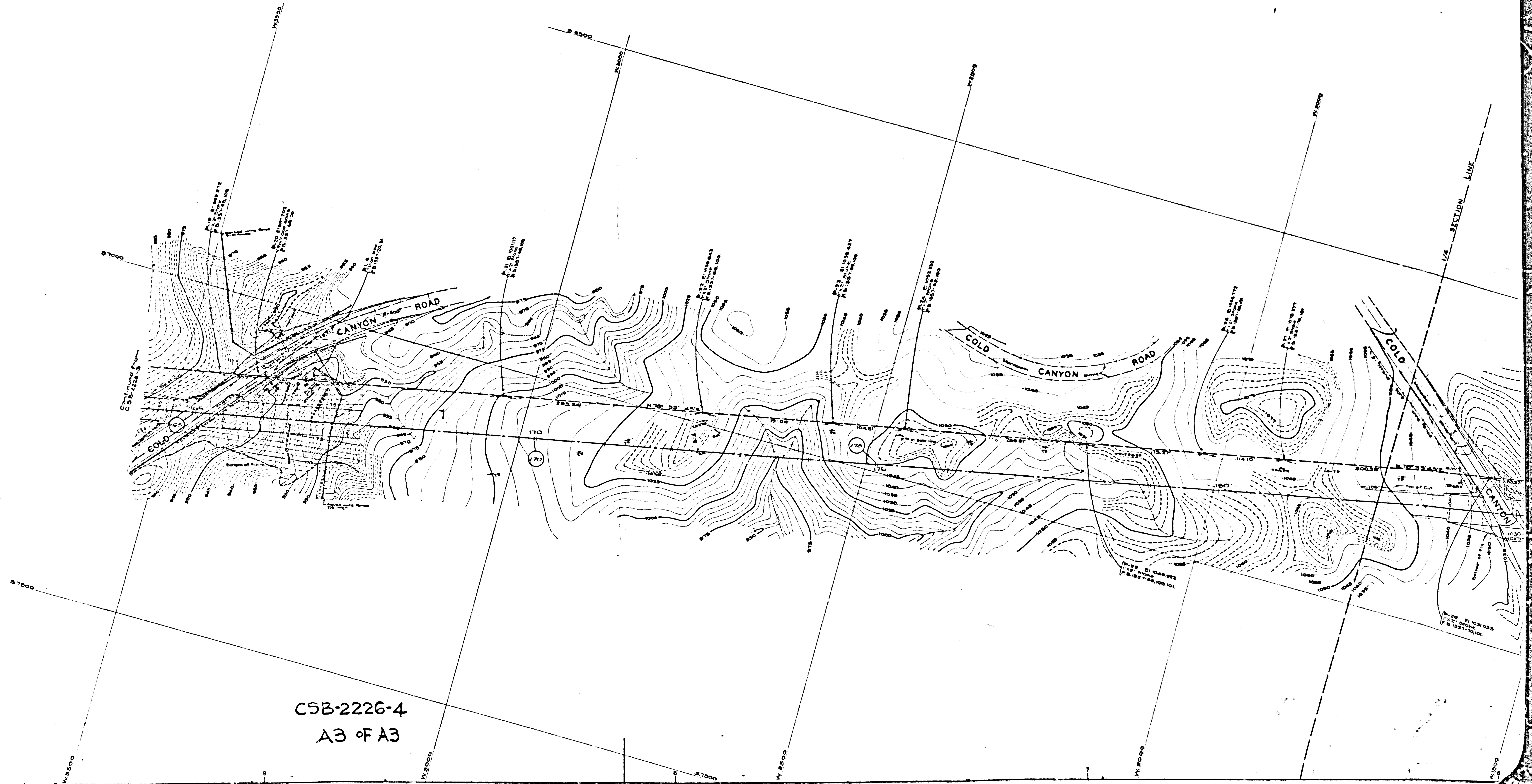


EQU
210-76
211-23

CSB-2226-4
A2 of A3

SHEET 15 OF 10 SHEETS
COMPLIANCE MAP M&B-5559

SHEET 15 OF 10 SHEETS
COMPLIANCE MAP M&B-5559



CSB-2226-4
A3 of A3