

COUNTY OF LOS ANGELES
TOPOGRAPHIC MAP OF
MULHOLLAND HIGHWAY
FROM
LAS VIRGENES ROAD
TO
EXISTING MULHOLLAND DRIVE
AT LOS ANGELES CITY BOUNDARY
COUNTY SURVEYORS MAP NO B-2226
SHEET NO 3 OF 10 SHEETS
SCALE: 1 INCH = 50 FT.

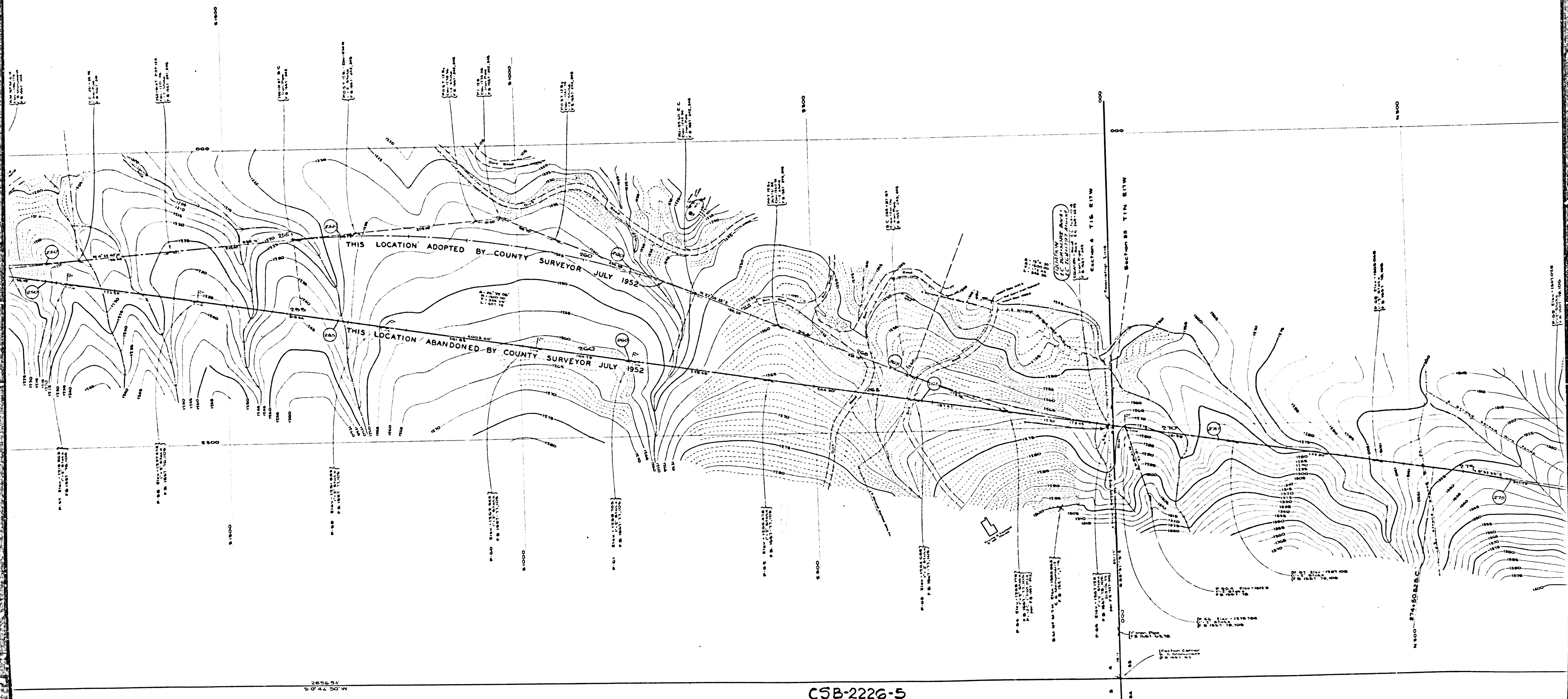
JOB NUMBER 8551
C.E. ARNOLD - COUNTY SURVEYOR
SURVEYED DEC. 1949 TO JUNE 1952
SURVEYED ON REQUEST OF THE ROAD
COMMISSIONER UNDER SEC. 79, ORD.
4099, BY LETTERS DATED APRIL 8, 1949
AND MAY 1, 1951.
BEARINGS ARE BASED ON THE
BEARING OF MULHOLLAND HIGHWAY
PER C.S. 8824-15
PLANE TABLE SHEETS
G-311, G-312, G-313, G-314
A G-315 F.B. 1557
FIELD WORK BY.....A. S. BLANCHARD
J. TERRANOVA
OFFICE WORK BY.....H.D. WEBER
D.E. MACPHERSON
Y. ITO
CHECKED BY.....H.D. WEBER

DATUM - MEAN SEA LEVEL
ELEVATIONS SHOWN HEREON ARE BASED UPON B.M. '34 M'
AND B.M. '13-M' L.S. 827-12. THE ELEVATION OF WHICH
WAS DETERMINED FROM U.S.S. B.M. (U.S. 1300) AND CO. SUR.
B.M. '13-1007' BASED UPON THE U.S.C. 80-S ADJUSTMENT OF 1928.

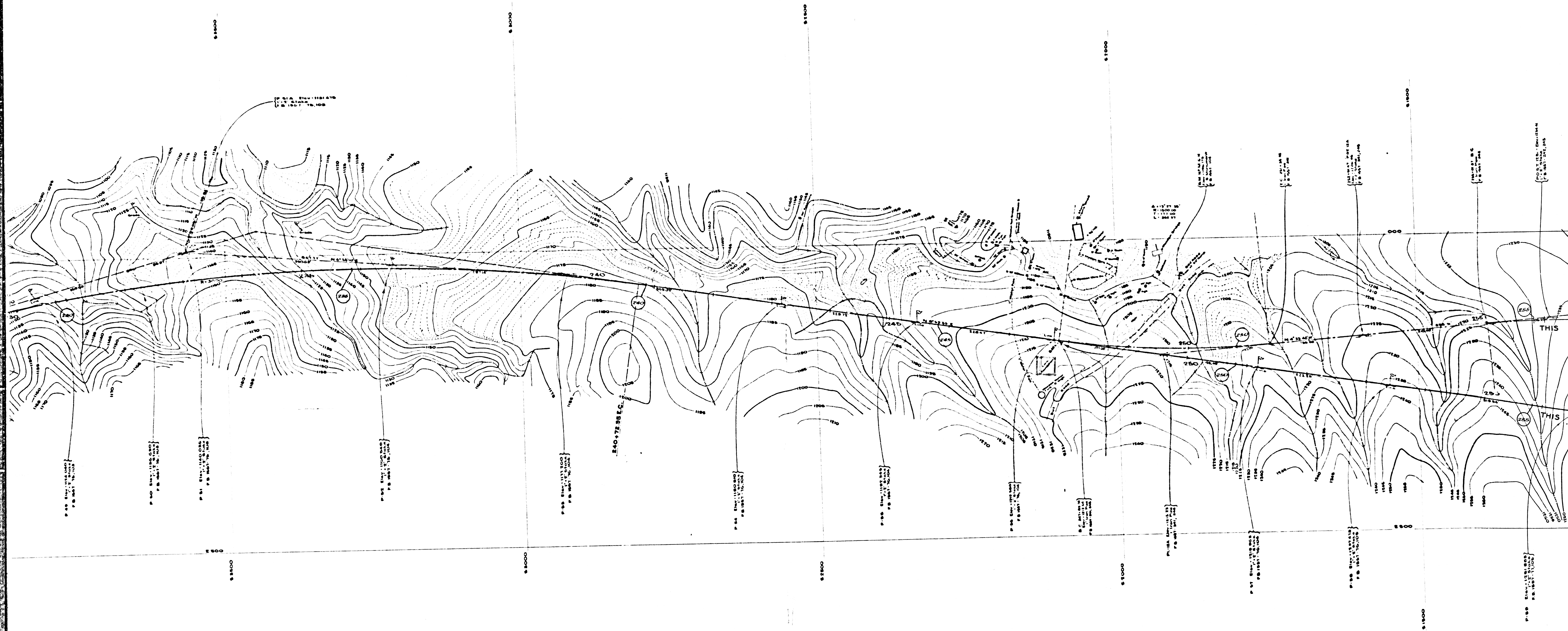
THIS MAP FILED.....APRIL, 1953
WILLIAM J. FOX - COUNTY SURVEYOR
FOR ALIGNMENT SEE C.S.B-2338-23

Note 280
Stations shown this and BC and
LC stations and intermediate points are
alignment map stations.
Encircled stations are earthwork stations

CSB-2226-5
A1 OF A4



CSB-2226-5
 A2 OF A4



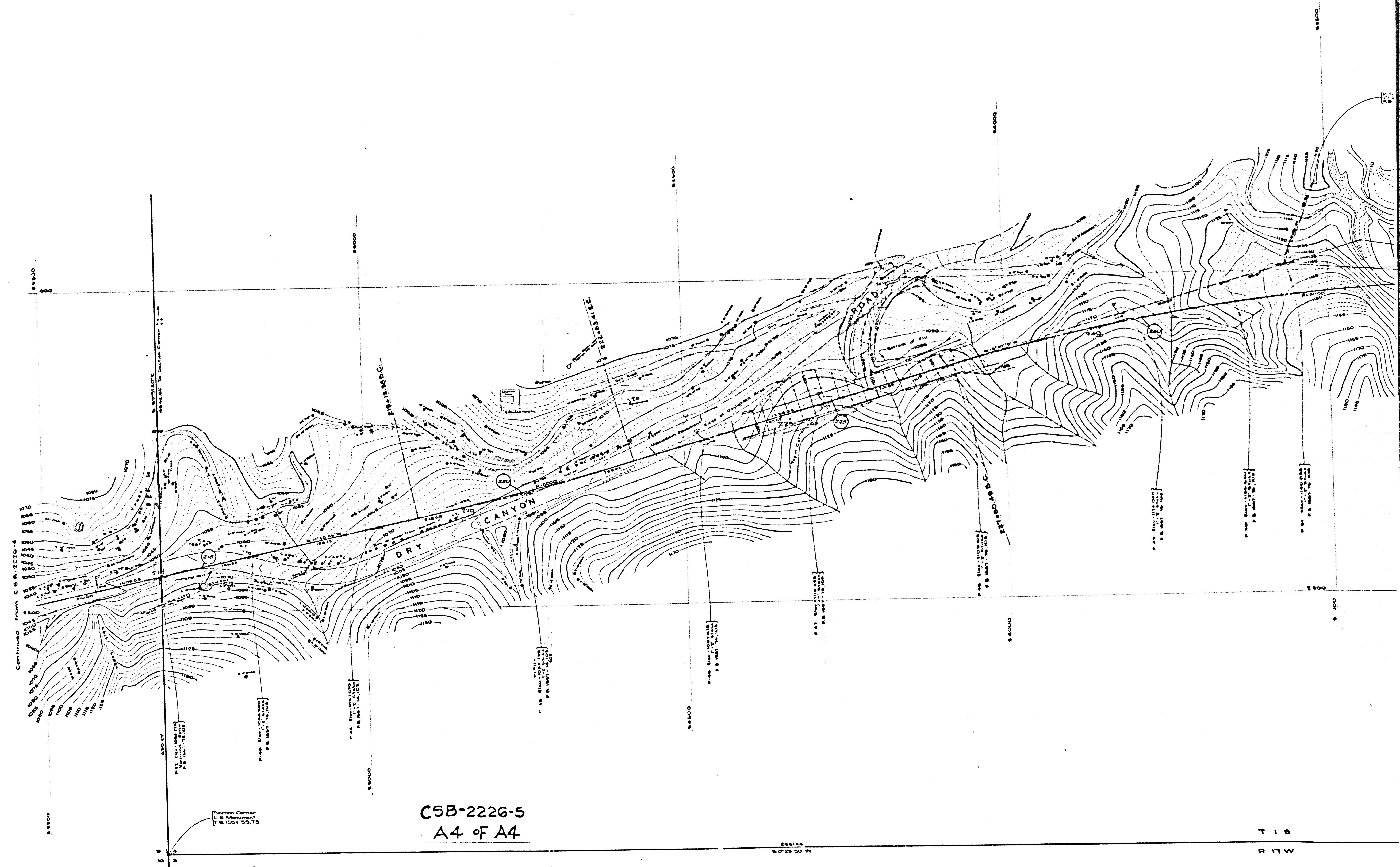
T 15
R 17W

CSB-2226-5
A3 of A4

2656 54
5 0 42 150 W

SHEET No. 2 OF 10 SHEETS
COUNTY SURVEYORS MAP No. B-5558

SHEET No. 2 OF 10 SHEETS
COUNTY SURVEYORS MAP No. B-5558



C5B-2226-5
A4 OF A4

T 18
R 17 W