

COUNTY OF LOS ANGELES
 TOPOGRAPHIC MAP OF
MULHOLLAND HIGHWAY
 FROM
 LAS VIRGENES ROAD
 TO
 EXISTING MULHOLLAND DRIVE
 AT LOS ANGELES CITY BOUNDARY
 COUNTY SURVEYORS MAP NO B-2228
 SHEET NO 8 OF 10 SHEETS
 SCALE: 1 INCH = 50 FT.

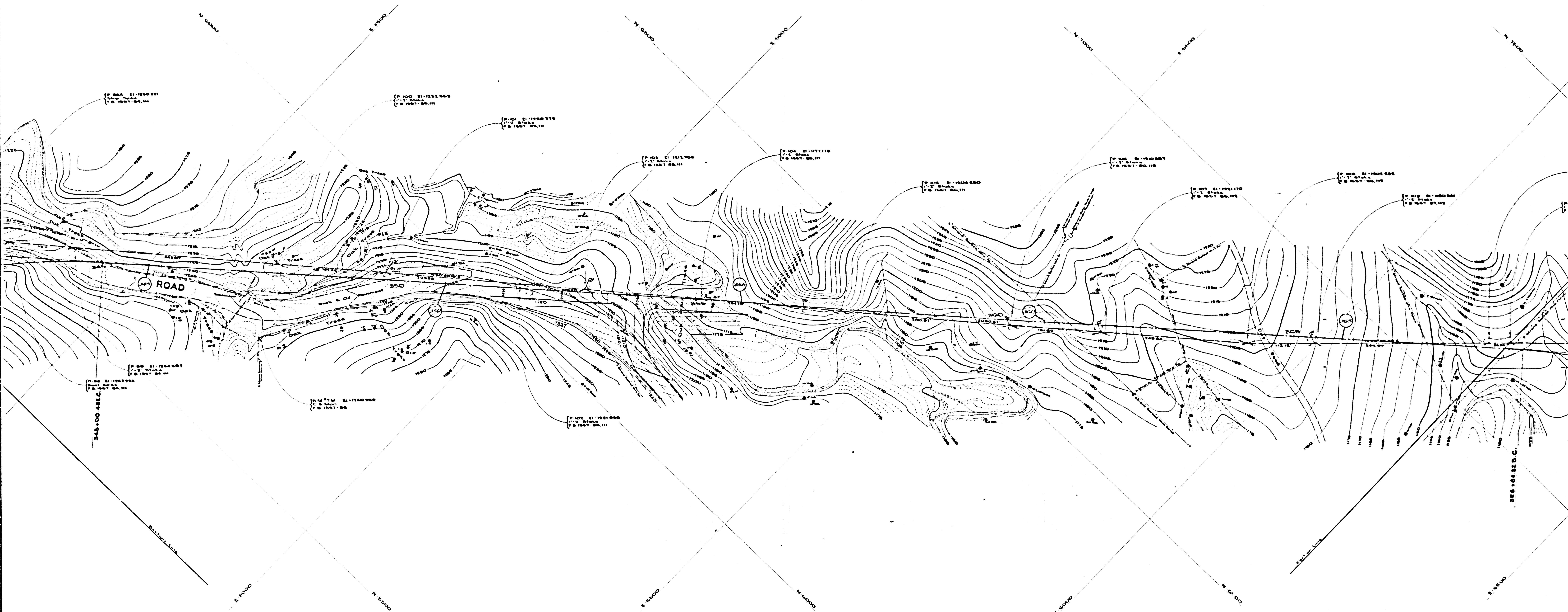
JOB NUMBER 8551
 C.E. ARNOLD - COUNTY SURVEYOR
 SURVEYED DEC. 1949 TO JUNE, 1952
 SURVEYED ON REQUEST OF THE ROAD
 COMMISSIONER UNDER SEC. 70, ORD.
 4099, BY LETTERS DATED APRIL 6, 1949
 AND MAY 7, 1951
 BEARINGS ARE BASED ON THE
 BEARING OF MULHOLLAND HIGHWAY
 PER C.S. 8824-15
 PLANE TABLE SHEETS
 G-319 TO G-319 INCL.
 AND G-322
 FIELD WORK BY..... F.H. BLANKHARD
 T. TERRANOVA
 O.S. WALTERMIRE
 OFFICE WORK BY..... W.G. VAN DEREN
 D.E. MACPHERSON
 R.D. HEBER
 Y. ITO
 CHECKED BY..... L. DETILLA

DATUM - MEAN SEA LEVEL
 ELEVATIONS SHOWN HEREON ARE BASED UPON B.M. 734-M
 AND B.M. 735-M. THE ELEVATION OF WHICH
 WAS DETERMINED FROM U.S.C.S. B.M. (U.S. 1900) AND CO. SUR.
 B.M. U.S. 1907, BASED UPON THE U.S.C.A.'S ADJUSTMENT OF 1928.

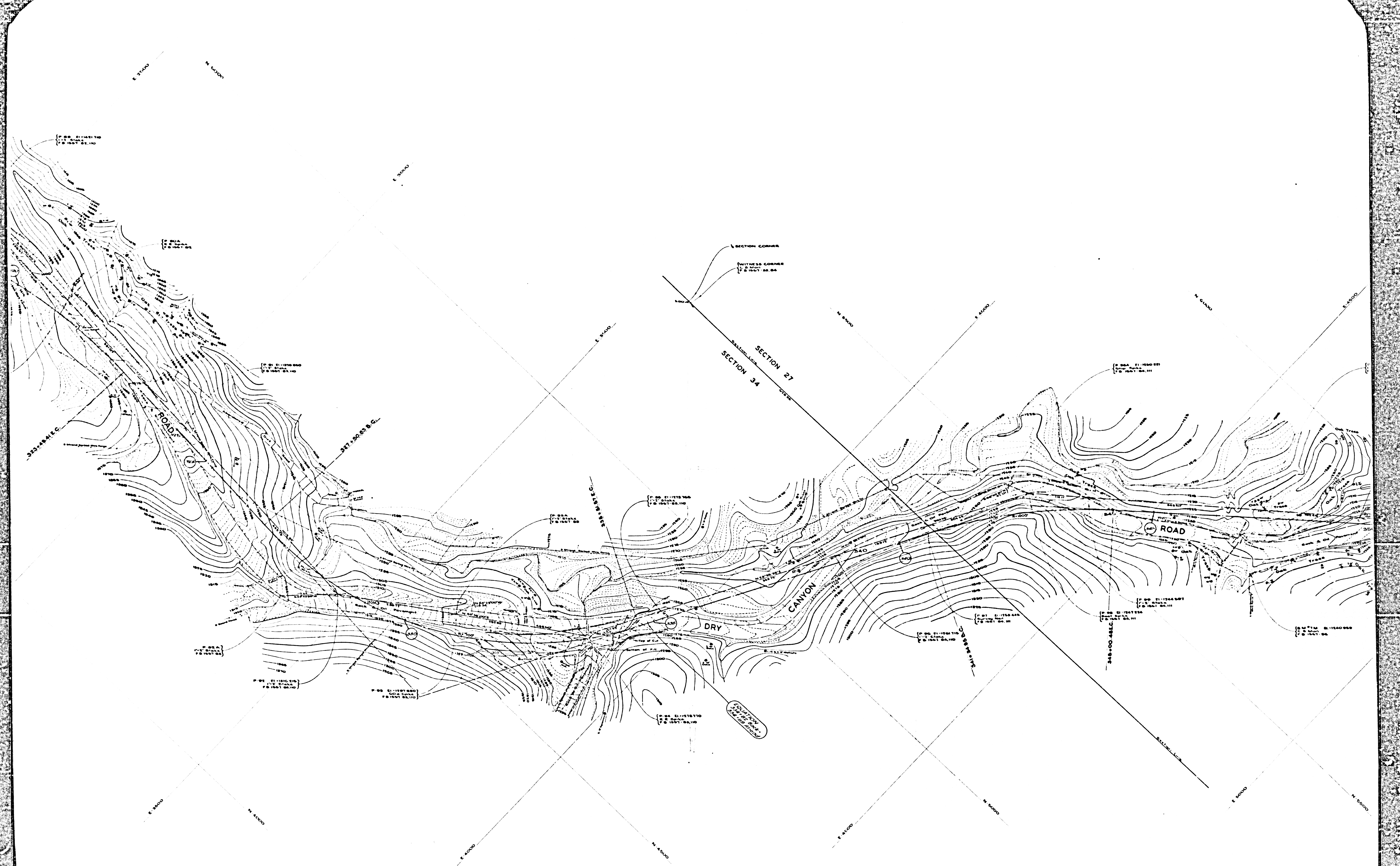
THIS MAP FILED..... APRIL, 1953
 WILLIAM J. FOX - COUNTY SURVEYOR
 FOR ALIGNMENT SEE C.S.B-2336-3,4

Note:
 Stations shown thus ——— and B.C. and
 E.C. stations and intermediate points are
 alignment mark stations.
 Encircled stations are earthwork stations.

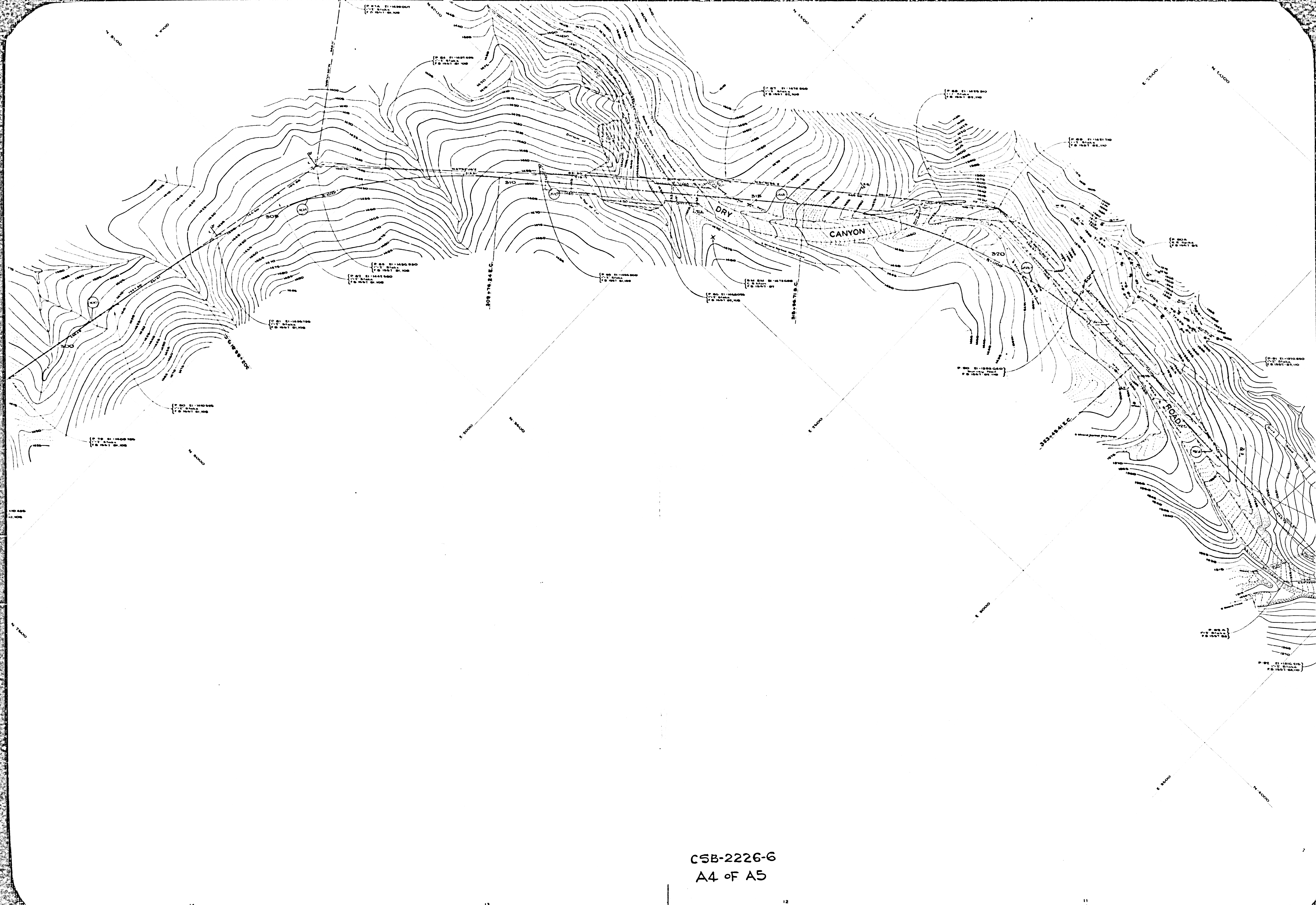
CSB-2226-6
 A1 OF A5



C5B-2226-G
A2 of A5



CSB-2226-6
A3 of A5



CSB-2226-6
A4 of A5



CSB-2226-G
A5 of A5