

Continued on C.S.B. 2226-9

COUNTY OF LOS ANGELES
TOPOGRAPHIC MAP OF
MULHOLLAND HIGHWAY
FROM
LAS VIRGENES ROAD
TO
EXISTING MULHOLLAND DRIVE
AT LOS ANGELES CITY BOUNDARY

COUNTY SURVEYORS MAP NO. B-2226
SHEET NO. 8 OF 10 SHEETS
SCALE: 1 INCH = 50 FT.

JOB NUMBER 8551
WILLIAM J. FOX - COUNTY SURVEYOR
SURVEYED DEC. 1949 TO JUNE, 1952

SURVEYED ON REQUEST OF THE ROAD
COMMISSIONER UNDER SEC. 79, ORD.
4099, BY LETTERS DATED APRIL 6, 1949
AND MAY 7, 1951

BEARINGS ARE BASED ON THE
BEARING OF MULHOLLAND HIGHWAY
PER C.S. 8824-15

PLANE TABLE SHEETS
G-324, G-381 & G-382
F.B. 1557

FIELD WORK BY..... F.H. BLANCHARD
D.S. WALTERMIRE
W.S. COWHERD

OFFICE WORK BY..... H.H.F. DONG
H.D. HEDER
Y. ITO

CHECKED BY WA. EDMONDSON

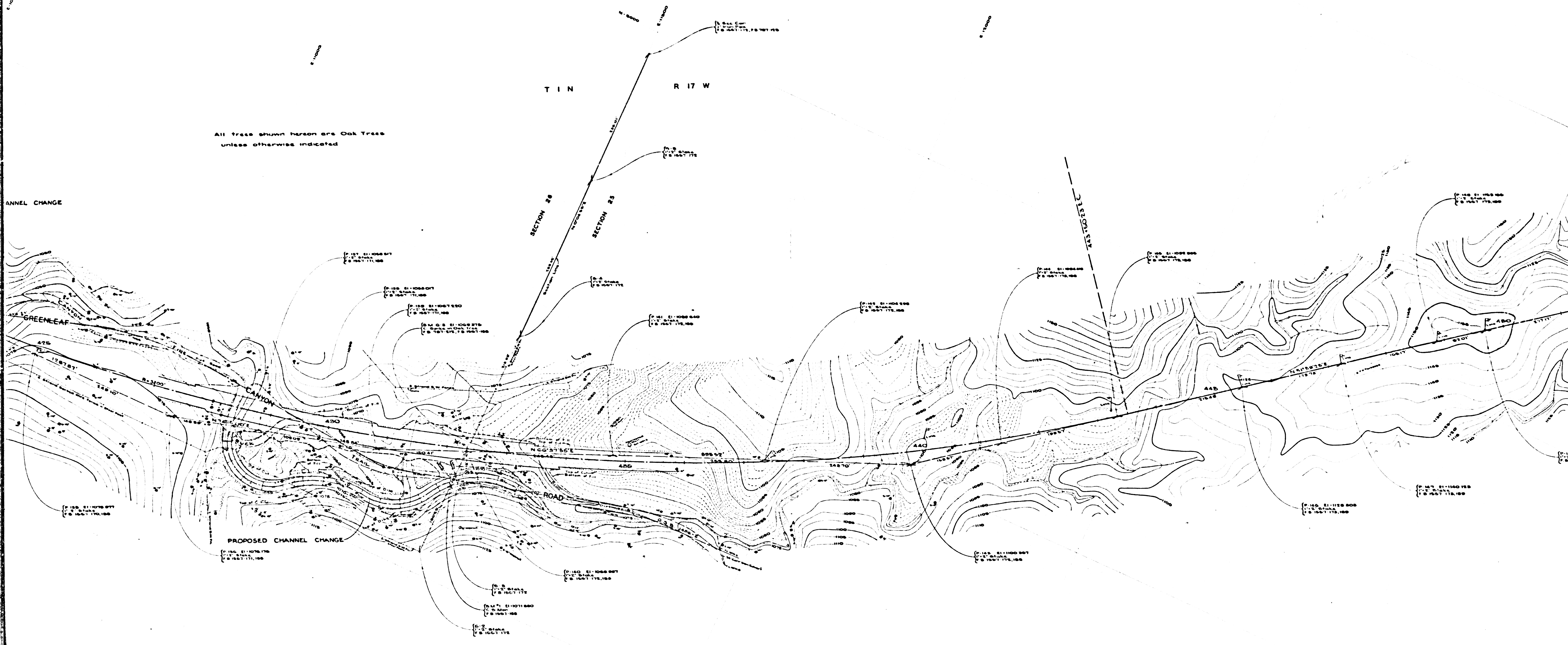
DATUM - MEAN SEA LEVEL
ELEVATIONS SHOWN HEREON ARE BASED UPON B.M. 34-M
AND B.M. 13-M. THE ELEVATION OF WHICH
WAS DETERMINED FROM U.S.C.S. B.M. (U.S. 1300) AND CO. SUR.
B.M. U.S. 1303, BASED UPON THE U.S.C. & G.S. ADJUSTMENT OF 1928

Note
Stations shown thus ——— and BC and
LC stations and intermediate points are
alignment map stations.
Encircled stations are earthwork stations

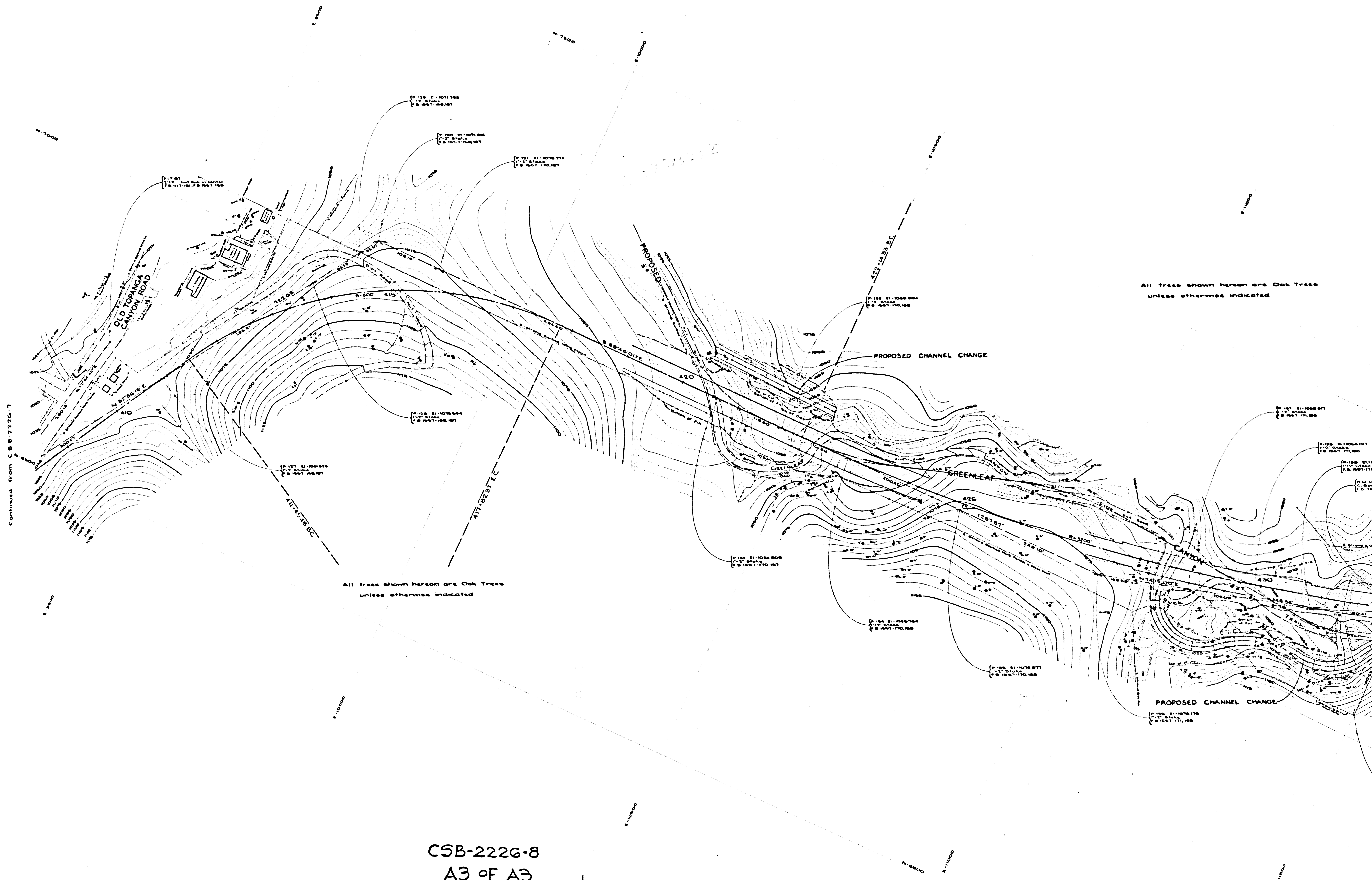
FOR ALIGNMENT SEE C.S.B.-2336-4

CSB-2226-8
A1 OF A3

All trees shown hereon are Oak Trees
unless otherwise indicated



8553-B ON 9AM APPROVED YINUOC
ETEEH2 01 70 8 ON TEEH2



All trees shown hereon are Oak Trees
unless otherwise indicated

All trees shown hereon are Oak Trees
unless otherwise indicated

PROPOSED CHANNEL CHANGE

CSB-2226-8
A3 OF A3

SHEET NO 8 OF 10 SHEETS
CONTRACT SURVEYORS MAP NO B-5558