



COUNTY OF LOS ANGELES
 TOPOGRAPHIC MAP OF
MULHOLLAND HIGHWAY
 FROM
 LAS VIRGENES ROAD
 TO
 EXISTING MULHOLLAND DRIVE
 AT LOS ANGELES CITY BOUNDARY
 COUNTY SURVEYORS MAP NO B-2226
 SHEET NO 9 OF 10 SHEETS
 SCALE: 1 INCH = 50 FT.
 JOB NUMBER 8551
 WILLIAM J FOX - COUNTY SURVEYOR
 SURVEYED DEC. 1949 TO JUNE, 1952
 SURVEYED ON REQUEST OF THE ROAD
 COMMISSIONER UNDER SEC 79, ORD.
 4099, BY LETTERS DATED APRIL 8, 1949
 AND MAY 7, 1951
 BEARINGS ARE BASED ON THE
 BEARING OF MULHOLLAND HIGHWAY
 PER C.S. 8824-15
 PLANE TABLE SHEETS
 G-382 G-383 & G-384
 FB 1557
 FIELD WORK BY..... F.M. BLANCHARD
 D.S. WALTERSHIRE
 W.S. COWHERD
 L.L. BROWN
 OFFICE WORK BY..... H.H.F. DONG
 T. ITO
 CHECKED BY..... R.E. SNYDER

DATUM - MEAN SEA LEVEL
 ELEVATIONS SHOWN HEREON ARE BASED UPON B.M. 73447
 AND B.M. 13147 (S.B. 808-18 & L.B. 859-10) THE ELEVATION OF
 WHICH WAS DETERMINED FROM U.S.G.S. B.M. (U.S. 1300) AND
 COUNTY SURVEYORS' B.M. (U.S. 303) BASED UPON THE U.S.C. &
 G.S. ADJUSTMENT OF 1928.

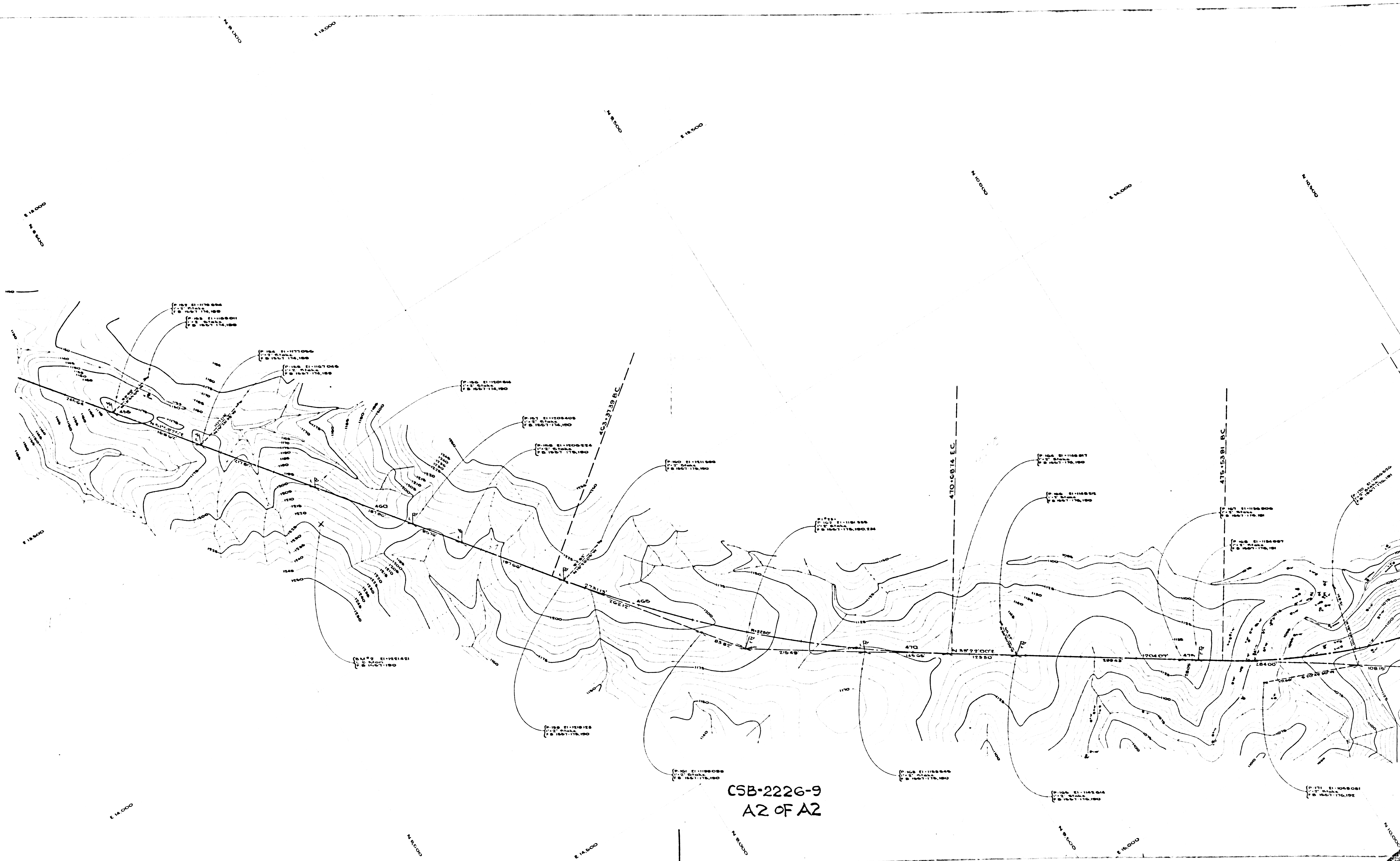
FOR ALIGNMENT SEE C.S.B-2336-4

Note: 485
 Stations shown thus — — — and AC and
 EC stations and intermediate points are
 alignment map stations.
 Encircled stations are earthwork stations

CSB-2226-9
 A1 OF A2

All trees shown hereon are Oak Trees
 unless otherwise indicated

Continued from CSB-2226-8



CSB-2226-9
A2 OF A2