

MARGINAL MAP
SHOWING
TOPOGRAPHY
SCALE: 1 INCH = 40 FT.

FIELD WORK BY..... D.E. HOLMES
OFFICE WORK BY..... R.E. SNYDER
CHECKED BY..... W.G. VAN DEREN
FIELD BOOK 1595-19-36

DATUM - MEAN SEA LEVEL
ELEVATIONS SHOWN HEREON ARE BASED ON THE 1924 U.S.C.G.S.
ADJUSTMENT OF U.S.C.G.S. B.M. "L-35-1923 (U.S. 274)

NOTE:
FOR PROPOSED GRADES ON LARK ELLEN AVENUE
SEE ROAD DEPARTMENT MAP M.S. 3172
PROPOSED GRADES ON PAYSON ST. ESTABLISHED
BY COUNTY SURVEYOR & APPROVED BY ROAD DEPT

COUNTY OF LOS ANGELES
MAP OF
VALLEYDALE PARK
BEING
A PORTION OF THE N.E. 1/4 OF THE S.W. 1/4 OF
SECTION 3 - T.1.S. - R.10 W. - S.B.B. & M.

COUNTY SURVEYORS MAP NO. B-2228
SHEET NO. 1 OF 2 SHEETS
SCALE: 1 INCH = 100 FT.

JOB NUMBER 8575
C.E. ARNOLD - COUNTY SURVEYOR
SURVEYED DEC. 1949 - JAN. 1950

SURVEYED ON REQUEST OF THE DIRECTOR,
DEPARTMENT OF PARKS AND RECREATION
UNDER SEC. 79, ORD. 4099, BY LETTER DATED
AUG. 24, 1949

BEARINGS ARE BASED ON THE BEARING OF
GLADSTONE AVE. AS SHOWN ON C.S.B.-481-1

F.B. 1595-7-52
FIELD WORK BY... D.E. HOLMES
OFFICE WORK BY... L.C. WILSON
CHECKED BY... K.R. McPHERSON

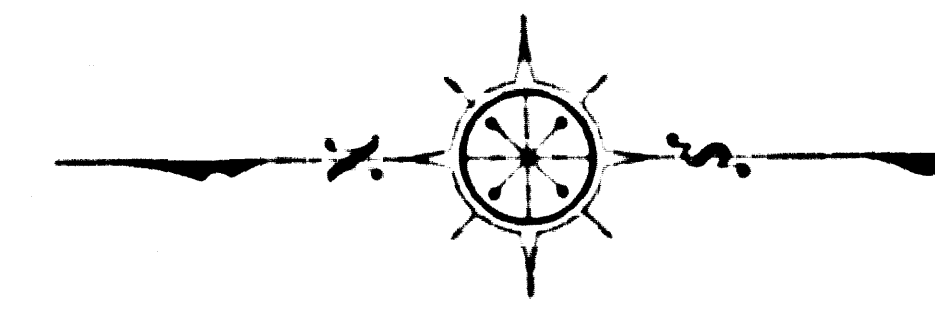
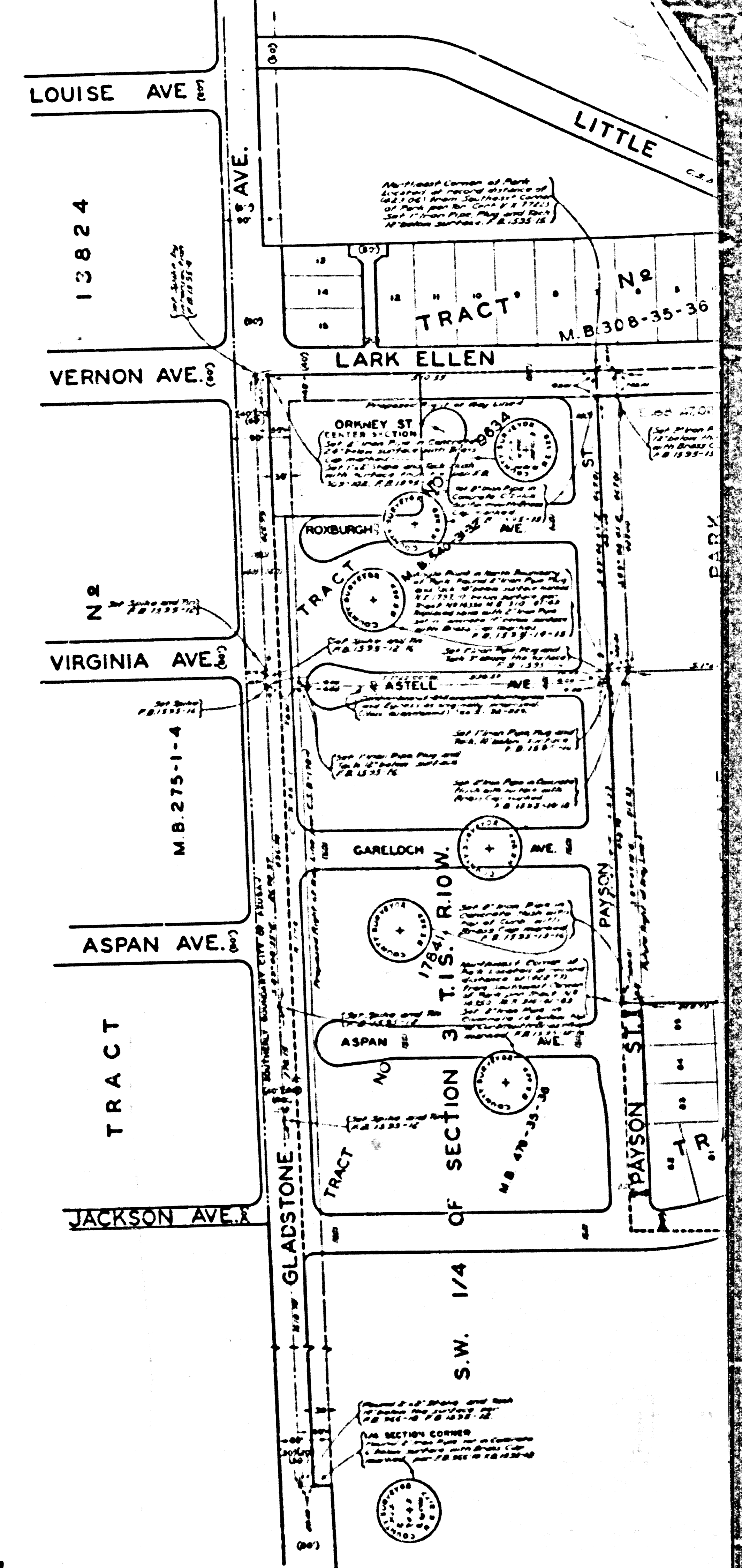
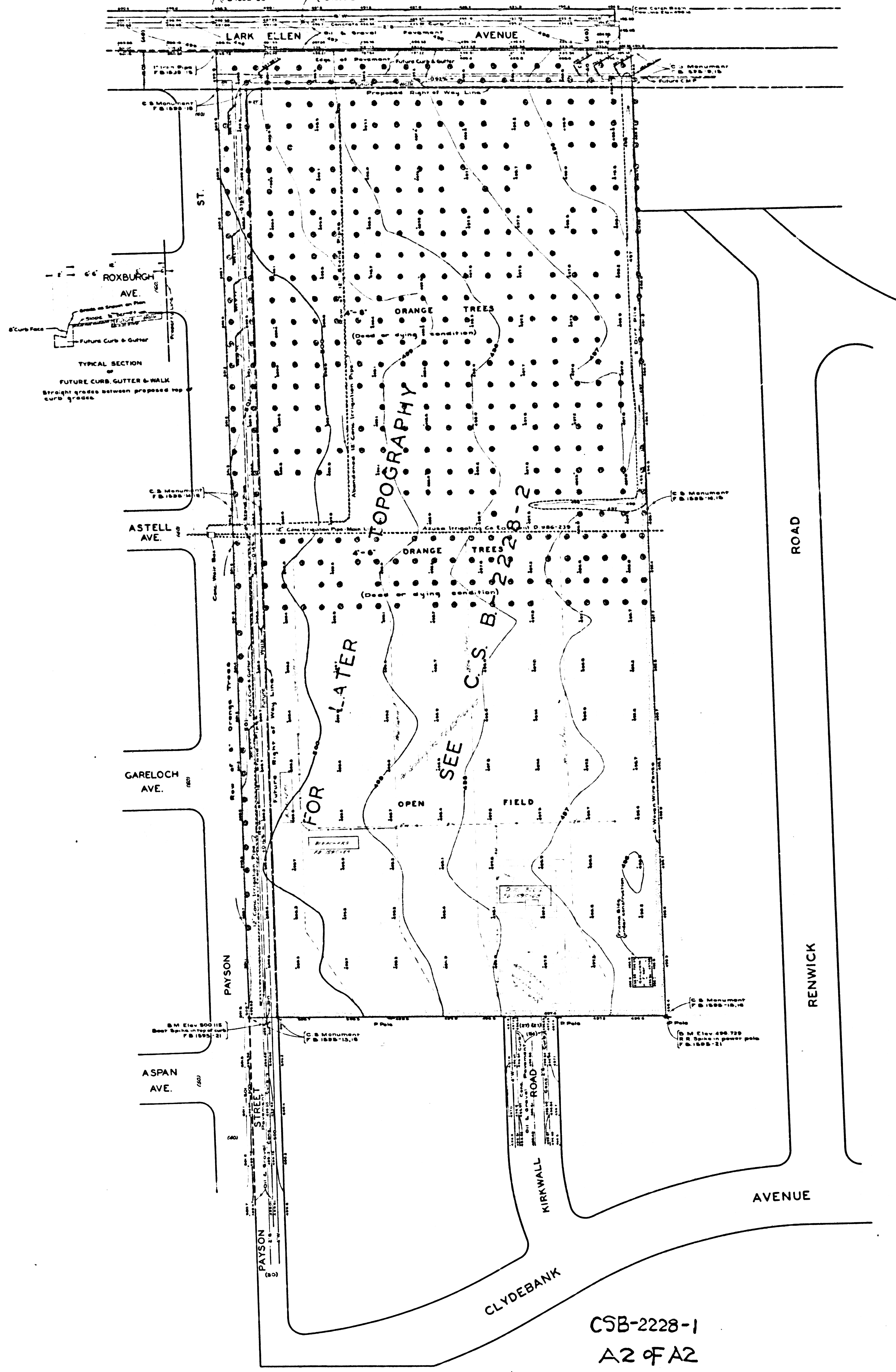
INDEX 47
Name Established by Charles L. Allen - Min. D. 549-354
2-20-51-49-54

FOR TOPOGRAPHY - SEE C.S.B.-2228-2

CSB-2228-1
A1 OF A2

SHEET NO. 1 OF 2 SHEETS

SHEET NO. 1 OF 2 SHEETS



MARGINAL MAP
SHOWING
TOPOGRAPHY
SCALE: 1 INCH = 40 FT.
FIELD WORK BY..... D. E. HOLMES
OFFICE WORK BY..... R. E. SHYDER
CHECKED BY..... W. G. VAN DEREN
FIELD BOOK 1595-19-50
DATUM - MEAN SEA LEVEL
ELEVATIONS SHOWN HEREON ARE BASED ON THE 1934 U.S.C.G.S.
ADJUSTMENT OF U.S.C.G.S. B.M. "L-35-1923 (1'5.274)'

NOTE:
FOR PROPOSED GRADES ON LARK ELLEN AVENUE
SEE ROAD DEPARTMENT MAP M.J. 3172
PROPOSED GRADES ON PAYSON ST ESTABLISHED
BY COUNTY SURVEYOR & APPROVED BY ROAD DEPT.

CSB-2228-1
A2 OF A2