

AMELIA MAYBERRY
 COUNTY OF LOS ANGELES
 MAP OF
SOUTH WHITTIER PARK
 BEING

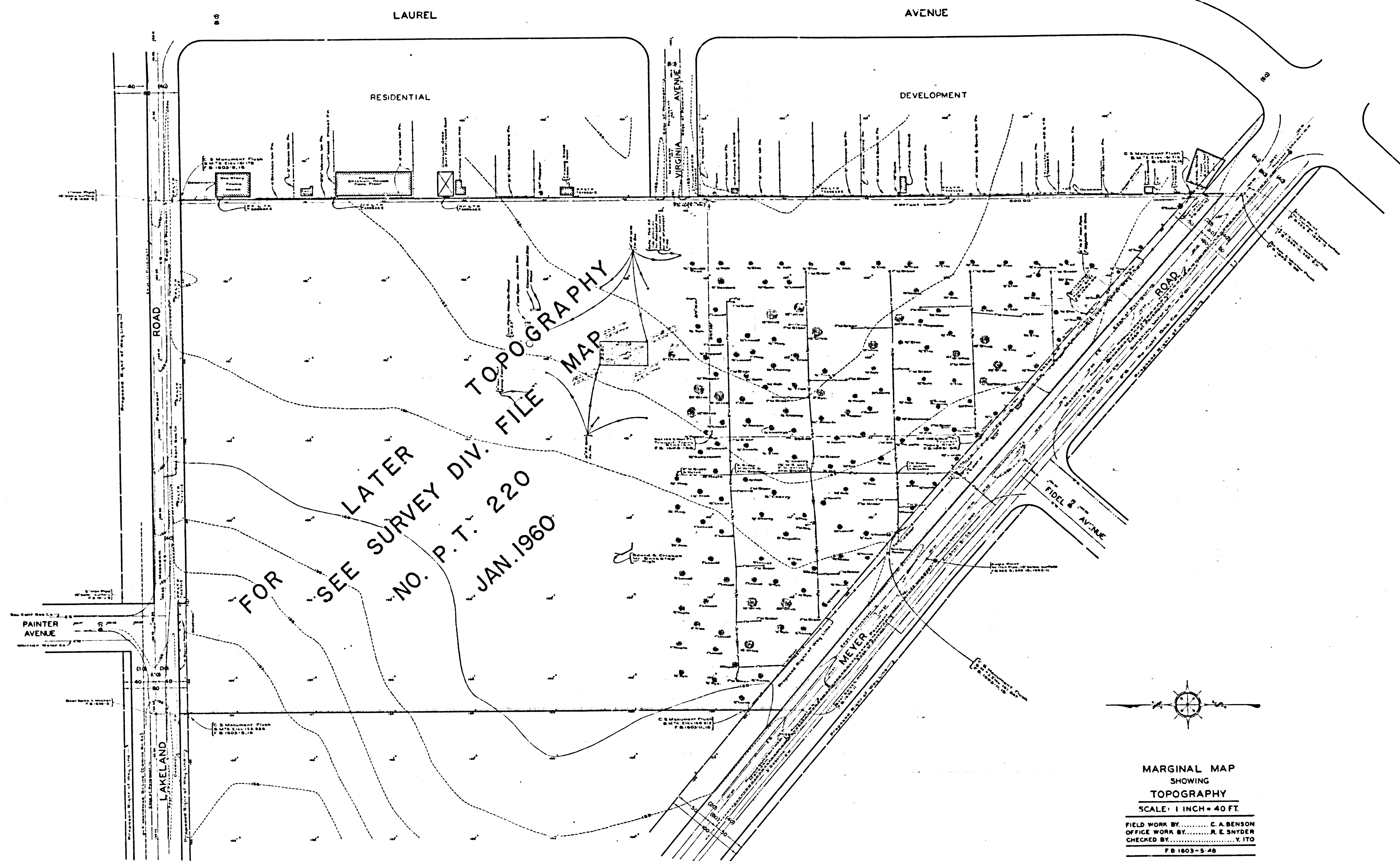
A PORTION OF LOT 1 OF TRACT NO
 3152, M. B. 36-53-57.
 COUNTY SURVEYORS MAP NO B-2229
 SCALE: 1 INCH = 100 FT.

JOB NUMBER 8572
 C. E. ARNOLD - COUNTY SURVEYOR
 SURVEYED: DECEMBER 1949
 SURVEYED ON REQUEST OF THE DIRECTOR,
 DEPT. OF PARKS AND RECREATION, UNDER
 SEC. 79, ORD. 4099, BY LETTER DATED
 AUGUST 25, 1949
 BEARINGS ARE BASED ON THE BEARING OF
 MEYER ROAD PER C. S. B-610-2.
 F. B. 1603-5-47
 FIELD WORK BY G. A. BENSON
 OFFICE WORK BY O. E. SWANSON
 CHECKED BY K. R. MC PHERSON

Name changed by Board order 11-28-1950 17-502 278-798

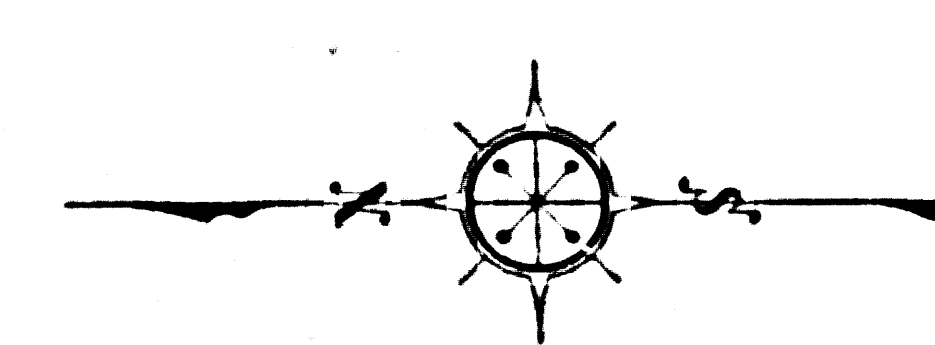
INDEX-34

CSB-2229
 A1 OF A2



FOR LATER TOPOGRAPHY
 SEE SURVEY DIV. FILE MAP
 NO. P. T. 220
 JAN. 1960

LAKELAND



MARGINAL MAP
 SHOWING
 TOPOGRAPHY
 SCALE: 1 INCH = 40 FT.
 FIELD WORK BY..... C. A. BENSON
 OFFICE WORK BY..... R. E. SNYDER
 CHECKED BY..... Y. ITO
 FB 1603-5-48

DATUM - MEAN SEA LEVEL
 ELEVATIONS SHOWN HEREON ARE BASED ON
 L.A. COUNTY ROAD DEPT. B.M. #22 AS SHOWN
 IN ROAD DEPT. B.A. 197-5
 NOTE:
 THE ROAD D-PARTMENT HAS NO GRADING
 PLANS FOR ROADS ADJACENT TO THE PARK
 REVISED APRIL 1950 BY W. C. D.
 RE/SED. OCT. 1955 BY C. W. C.
 RE/ISED MAY 1956 BY C. F. R.
 REVISED JULY 30, 1956 BY J. E. P.

CSB-2229
 A2 OF A2