

COUNTY OF LOS ANGELES  
 MAP OF  
**STREETS IN THE ARLINE AVENUE  
 SANITARY SEWER DISTRICT**  
 COUNTY SURVEYORS MAP NO. B-2231  
 SCALE: 1" = 100 FT.

JOB NUMBER 8351

C. E. ARNOLD - COUNTY SURVEYOR  
 SURVEYED AUG.-OCT. 1946

SURVEYED UNDER INSTRUCTIONS OF THE  
 BOARD OF SUPERVISORS PER ORDER DATED  
 FEB. 26, 1946

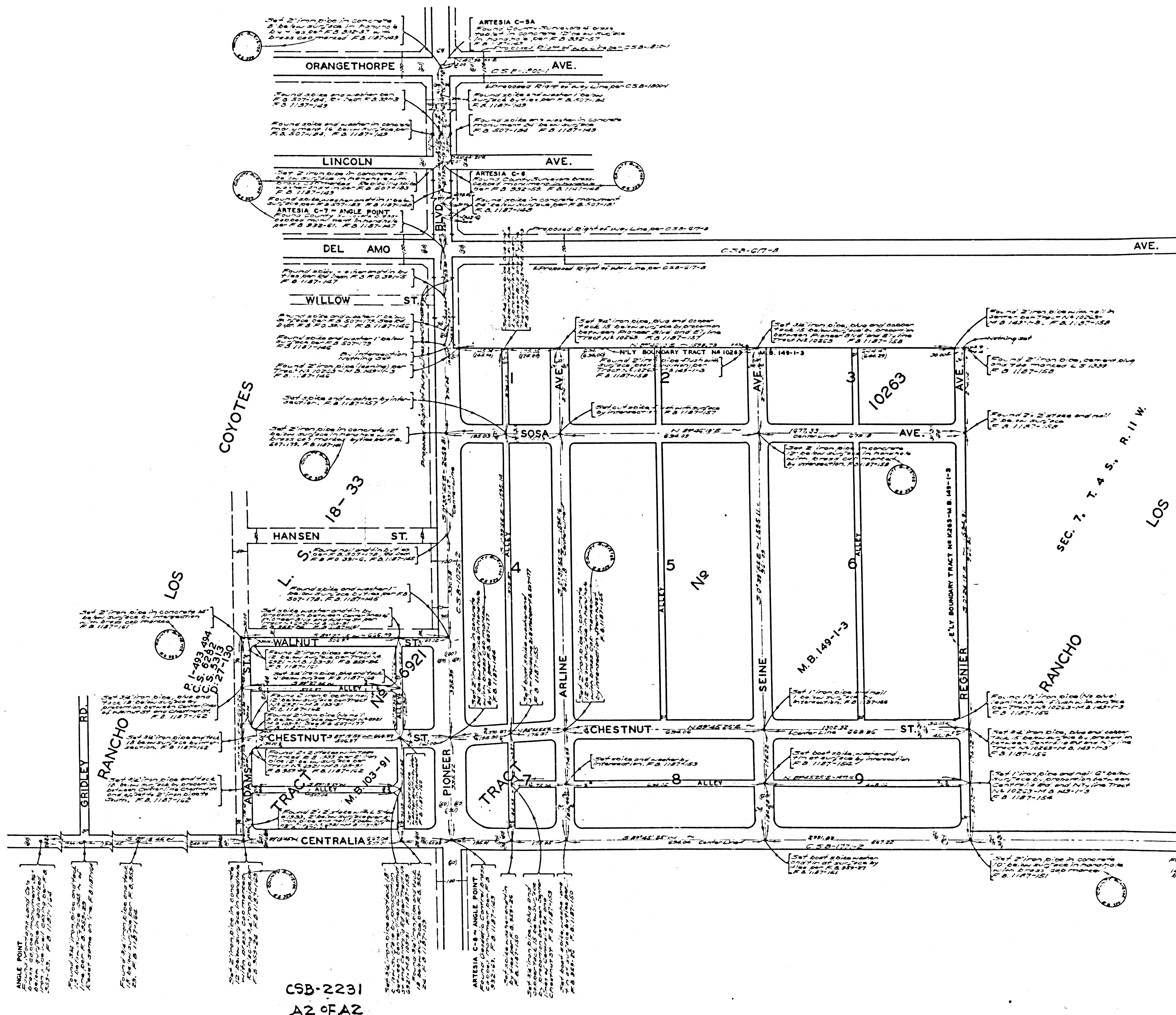
BEARINGS ARE BASED ON THE CALIFORNIA  
 COORDINATE SYSTEM, ZONE 7, PER CHAPTER  
 1307, STATUTES 1947. SEE C. S. 9423

P. B. 1187-143-164

FIELD WORK BY . . . . . C. A. BENSON  
 C. V. CRUMLEY  
 OFFICE WORK BY . . . . . C. W. COX  
 CHECKED BY . . . . . A. H. DREW

THIS SURVEY MADE TO ESTABLISH CENTER LINES ON THE STREETS  
 IN THIS AREA PRELIMINARY TO CONSTRUCTION OF SEWERS IN THE  
 ARLINE AVE. SANITARY SEWER DISTRICT. (C.I. JOB NO. 1169)

CSB-2231  
 A1 OF A2



CSB-2231  
A2 OF A2