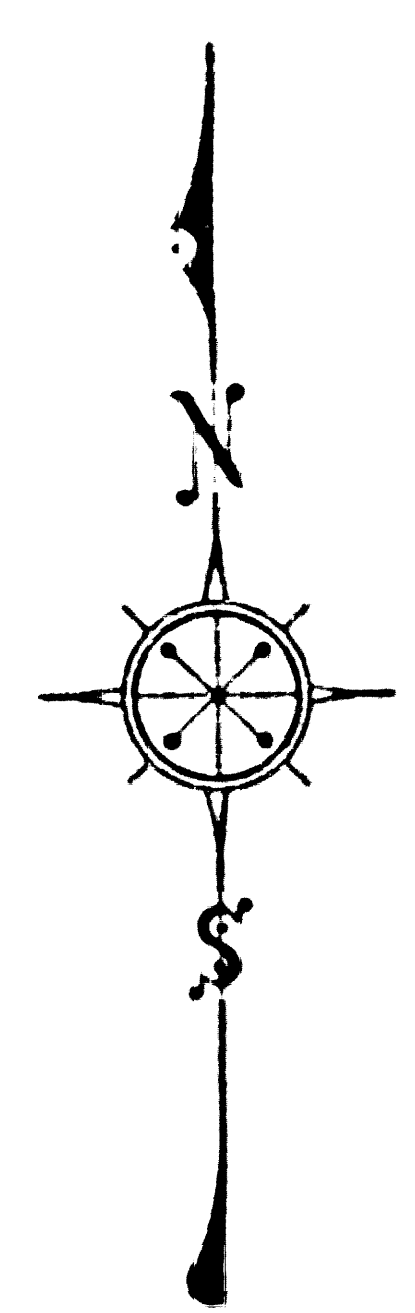


NO.
M. B. 523-4-9

16576

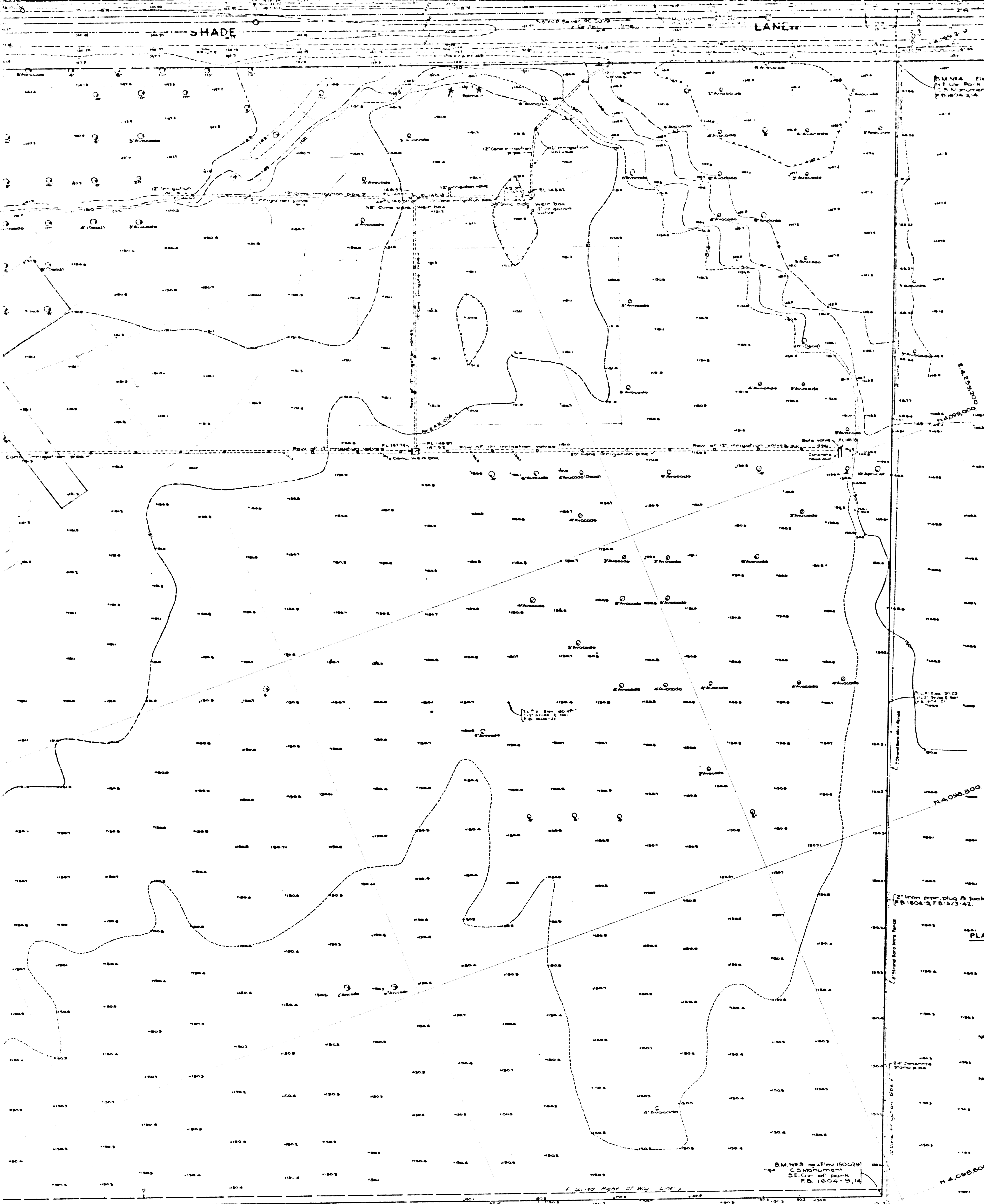


COUNTY OF LOS ANGELES
MAP OF
RIVERA PARK
BEING
A PORTION OF TRACT "S" IN RANCHO SANTA
GERTRUDES SUBDIVIDED FOR THE SANTA
GERTRUDES LAND ASSOCIATION PER M.R. 1-502
COUNTY SURVEYORS MAP NO. B-2235
SCALE - 1 INCH = 50 FEET

JOB NUMBER 8571
C.E. ARNOLD - COUNTY SURVEYOR
SURVEYED - JANUARY 1950
SURVEYED ON REQUEST OF THE DIRECTOR,
DEPARTMENT OF PARKS AND RECREATION UNDER
SEC. 79, ORD. 4098, BY LETTER DATED AUG. 24, 1949
BEARINGS ARE BASED ON THE CALIFORNIA
COORDINATE SYSTEM, ZONE 3, PER CHAPTER
1307, STATUTES 1947 - SEE C.S. 9423
F.B. 1804-S-21
FIELD WORK BY C.E. BENSON
OFFICE WORK BY W.E. LESKER
CHECKED BY K.R. McPHERSON

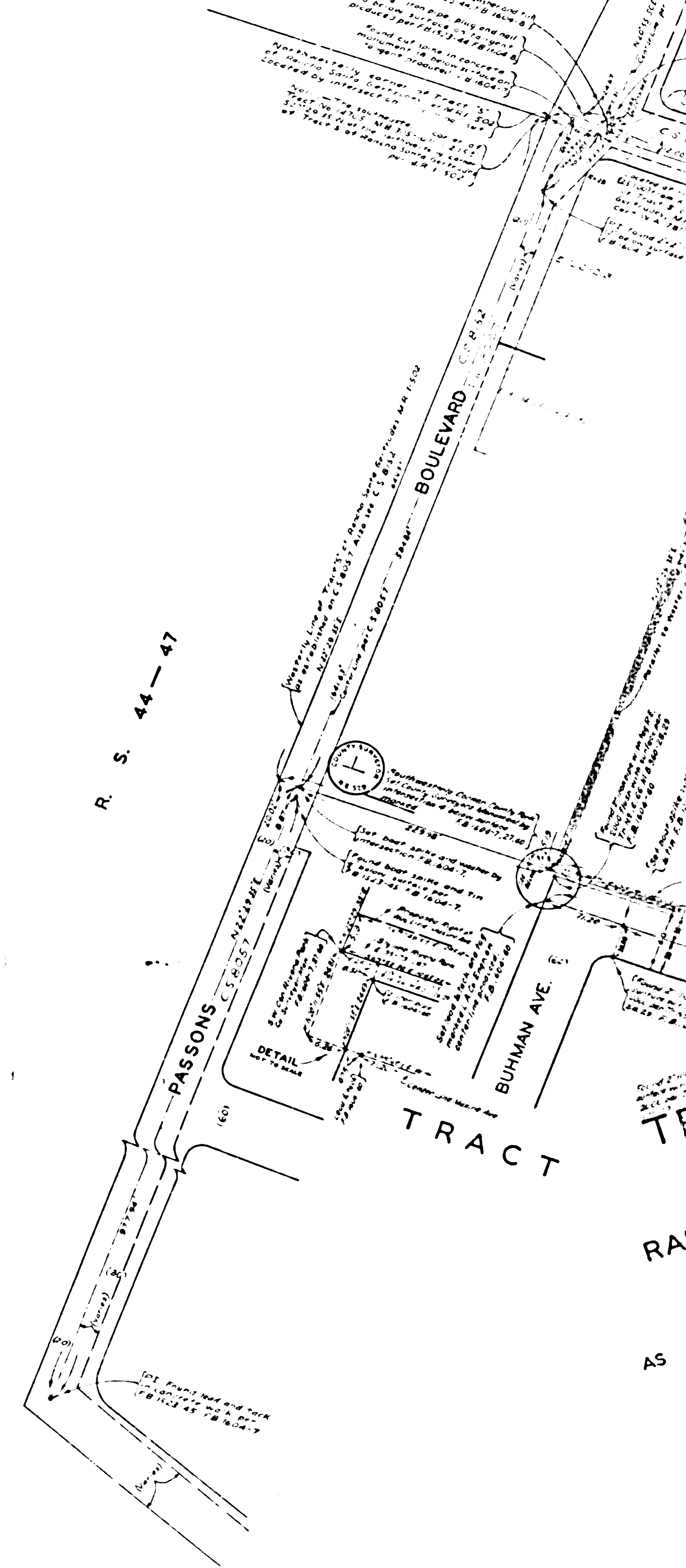
Name established by Board Order - Min. Et. 357-167 See E. 43-100
REVISED AUGUST 1950 BY H.D. REYNOLDS
REVISED OCT. 1950 R.L. GREEN

CSB-2235
A1 of A3



TRACT NO 14705
M.B. 305-10-11

R. S. 44-47



**MARGINAL MAP
SHOWING
TOPOGRAPHY
SCALE = 1 INCH = 20 FT.**

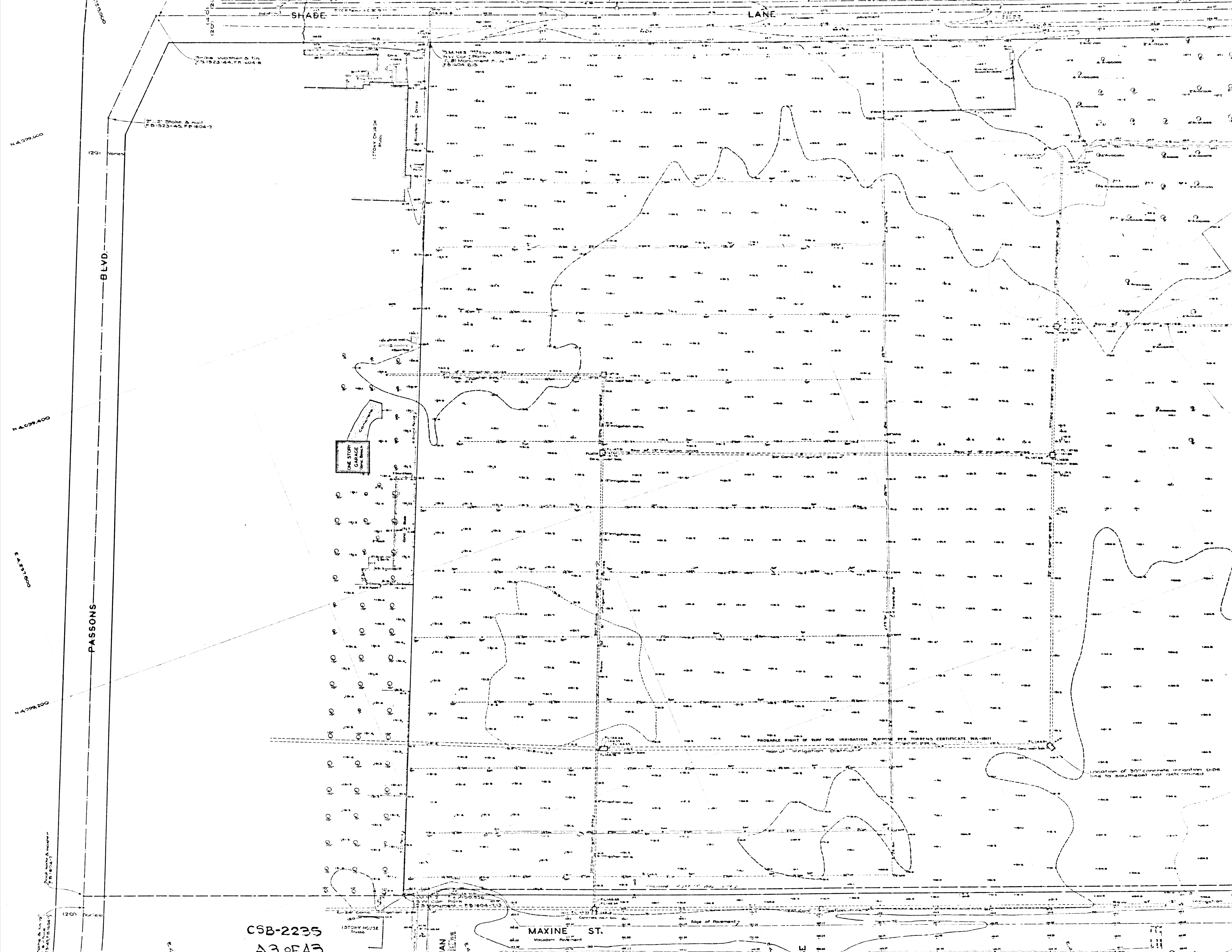
FIELD WORK BY..... LL. BROWN
OFFICE WORK BY..... C.J. GALLI
J.B. MACOMBER
W.G. VAN DEREN
D.A. WHITE
CHECKED BY..... J.B. MACOMBER
PLANE TABLE SHEETS D-298, D-299, D-300, D-302.

DATUM - MEAN SEA LEVEL
ELEVATIONS SHOWN HEREON ARE BASED
UPON B.M. AT-7 (F.B. 1453-13) THE
ELEVATION OF WHICH WAS DETERMINED
FROM ROAD DEPARTMENT B.M. 214 BASED
UPON T.M. ROAD DEPARTMENT DATUM
PER ROAD DEPARTMENT BOOK B D 6-1
PAGE 2 (L B 642-2)

NOTE ALL TREES SHOWN ARE ORANGE TREES
UNLESS OTHERWISE NOTED.

NOTE: THE ROAD DEPARTMENT HAS NO PRESENT
PLANS FOR THE FUTURE WIDENING OF
SHADE LANE.

CSB-2235



SHADE

LANE

N4 309 600

N4 099 400

N4 237 000

N4 398 200

BLVD.

PASSONS

ONE STORY GARAGE

1 STORY CHURCH

1 STORY HOUSE

MAXINE ST.

PROBABLE RIGHT OF WAY FOR IRRIGATION PURPOSE PER TORRENS CERTIFICATE WA-18111

Location of 30" concrete irrigation pipe line to be determined

CSB-2235

A3 of EAD

IAN

LJ