

COUNTY OF LOS ANGELES  
 MAP OF  
**A PART OF THE EASTERLY PORTION  
 OF THE  
 RANCHO SAN FRANCISCO**

COUNTY SURVEYORS MAP NO. B-2238  
 SHEET NO. 1 OF 3 SHEETS  
 SCALE: 1 INCH = 500 FT.

JOB NUMBER 8547  
 C. E. ARNOLD - COUNTY SURVEYOR  
 SURVEYED MARCH 1949 TO AUGUST 1951  
 SURVEYED UNDER INSTRUCTIONS OF THE  
 BOARD OF SUPERVISORS PER ORDER DATED  
 JAN. 4, 1949.

BEARINGS ARE BASED ON TRUE BEARINGS  
 FOR A MERIDIAN THROUGH STATION NO. 6  
 OF RANCHO SAN FRANCISCO PER A TIE TO  
 THE U.S.C. & G.S. TRIANGULATION SYSTEM.

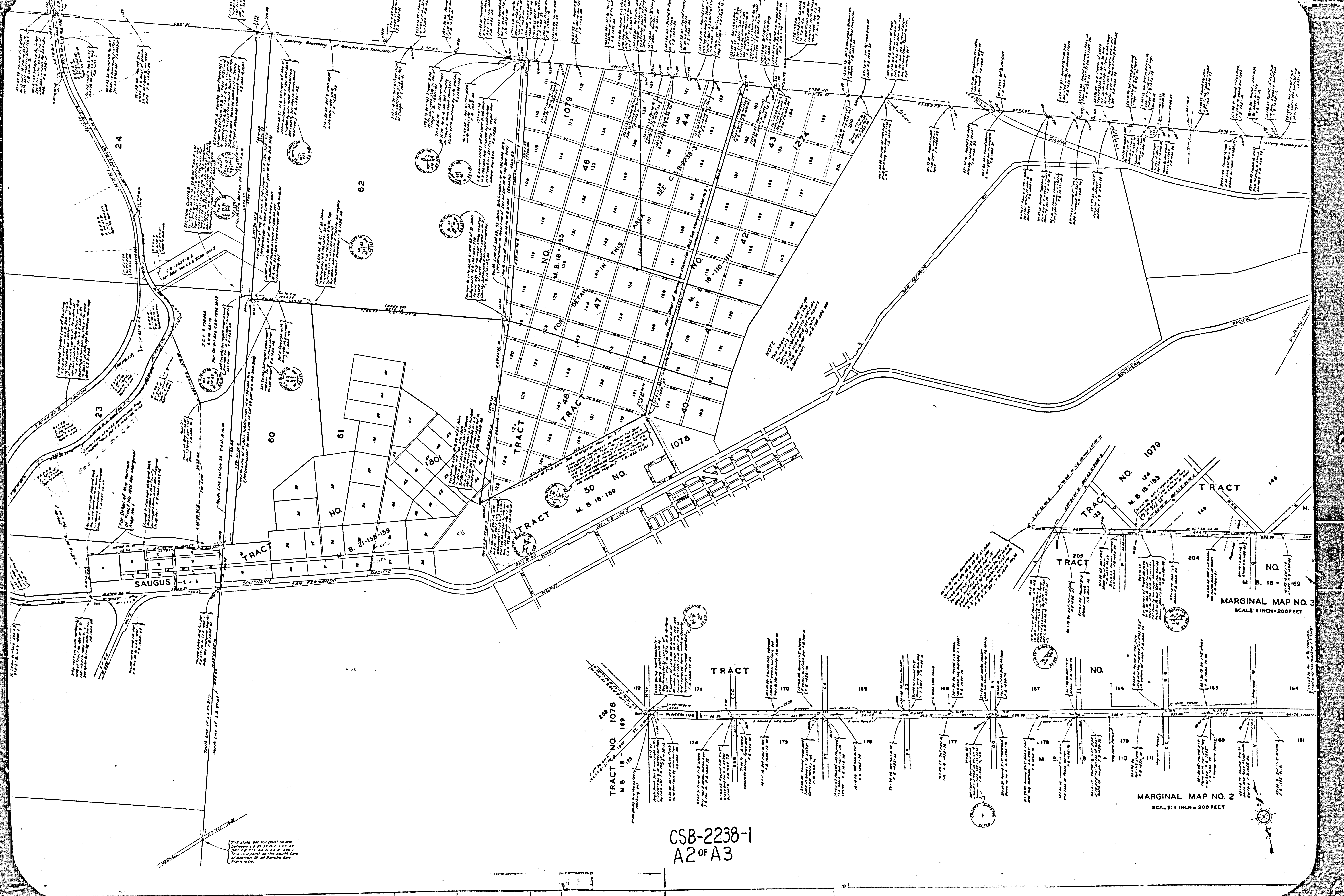
F. B. 1455-15-180  
 FIELD WORK BY F. C. HOWARD  
 OFFICE WORK BY K. R. M'PHERSON  
 C. E. DROWN  
 CHECKED BY K. R. M'PHERSON

111 249-117  
 THIS MAP FILED OCTOBER 1951  
 WILLIAM J. FOX - COUNTY SURVEYOR

CSB-2238-1  
 A1 OF A3

SHEET NO. 1 OF 3 SHEETS  
 COUNTY OF LOS ANGELES

SHEET NO. 1 OF 3 SHEETS  
 COUNTY SURVEYORS MAP NO. B-2238

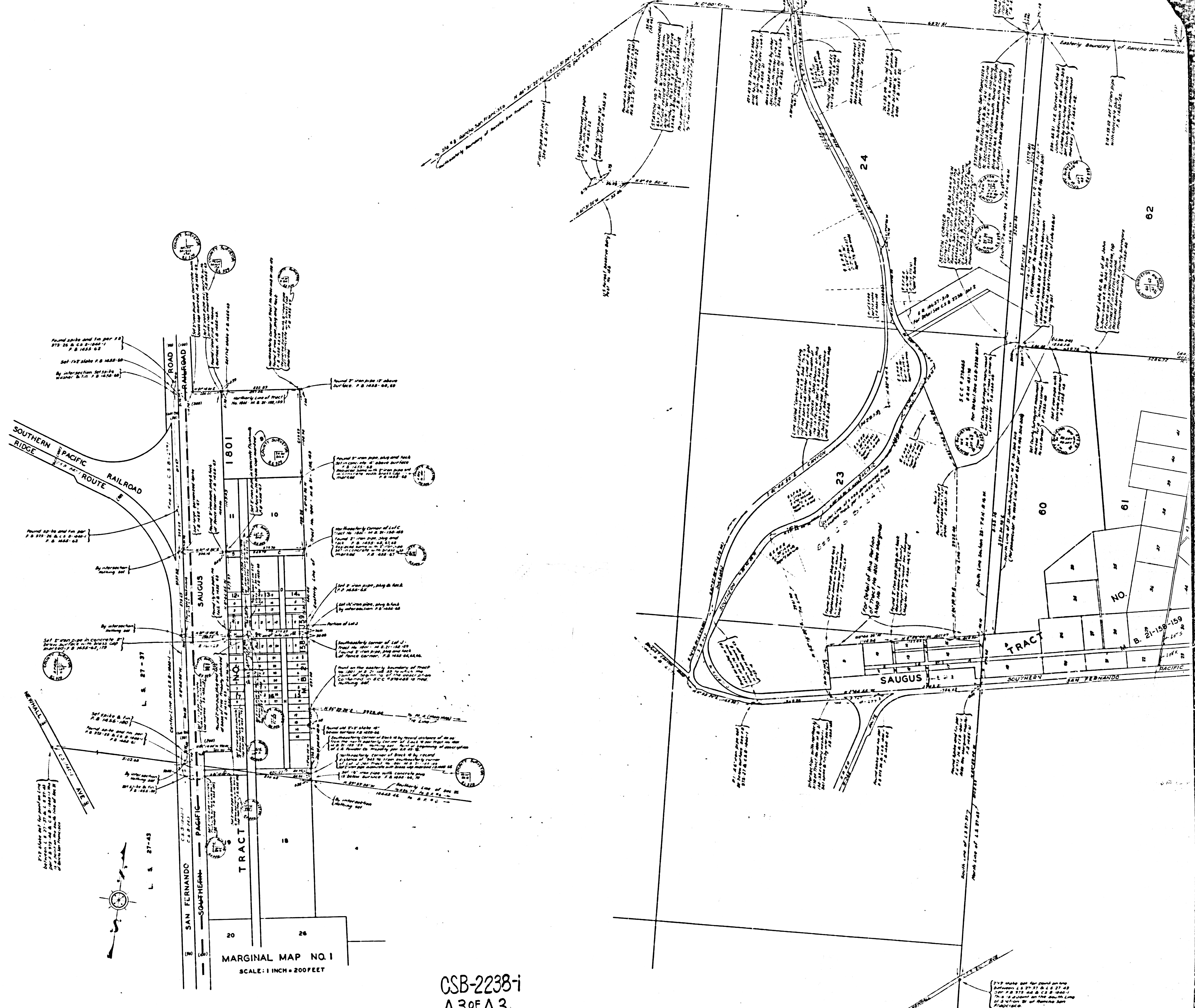


MARGINAL MAP NO. 3  
SCALE 1 INCH = 200 FEET

MARGINAL MAP NO. 2  
SCALE 1 INCH = 200 FEET

CSB-2238-1  
A2 OF A3

1/2" scale set for point on line  
between 15 27 31 & 15 27 33  
City of San Francisco  
This is a portion of the South Line  
of Section 21 of Rancho San  
Francisco.



MARGINAL MAP NO. 1  
SCALE: 1 INCH = 200 FEET

CSB-2238-i  
A3 OF A3

1/2" scale and for plan only  
L.S. 27-37 & L.S. 27-38  
L.S. 27-39 & L.S. 27-40  
L.S. 27-41 & L.S. 27-42  
L.S. 27-43 & L.S. 27-44  
L.S. 27-45 & L.S. 27-46  
L.S. 27-47 & L.S. 27-48  
L.S. 27-49 & L.S. 27-50  
L.S. 27-51 & L.S. 27-52  
L.S. 27-53 & L.S. 27-54  
L.S. 27-55 & L.S. 27-56  
L.S. 27-57 & L.S. 27-58  
L.S. 27-59 & L.S. 27-60  
L.S. 27-61 & L.S. 27-62  
L.S. 27-63 & L.S. 27-64  
L.S. 27-65 & L.S. 27-66  
L.S. 27-67 & L.S. 27-68  
L.S. 27-69 & L.S. 27-70  
L.S. 27-71 & L.S. 27-72  
L.S. 27-73 & L.S. 27-74  
L.S. 27-75 & L.S. 27-76  
L.S. 27-77 & L.S. 27-78  
L.S. 27-79 & L.S. 27-80  
L.S. 27-81 & L.S. 27-82  
L.S. 27-83 & L.S. 27-84  
L.S. 27-85 & L.S. 27-86  
L.S. 27-87 & L.S. 27-88  
L.S. 27-89 & L.S. 27-90  
L.S. 27-91 & L.S. 27-92  
L.S. 27-93 & L.S. 27-94  
L.S. 27-95 & L.S. 27-96  
L.S. 27-97 & L.S. 27-98  
L.S. 27-99 & L.S. 27-100