

COUNTY OF LOS ANGELES
MAP OF
A PART OF THE EASTERLY PORTION
OF THE
RANCHO SAN FRANCISCO

COUNTY SURVEYORS MAP NO. B-2238
SHEET NO. 2 OF 3 SHEETS
SCALE - 1 INCH = 100 FT.

JOB NUMBER 8547

C. E. ARNOLD - COUNTY SURVEYOR
SURVEYED MARCH 1949 TO MARCH 1950.

SURVEYED UNDER INSTRUCTIONS OF THE
BOARD OF SUPERVISORS PER ORDER DATED
FEB. 7, 1950

BEARINGS ARE BASED ON TRUE BEARINGS
FOR A MERIDIAN THROUGH STATION NO. 6
OF RANCHO SAN FRANCISCO PER A TIE TO
THE U.S.C. & G.S. TRIANGULATION SYSTEM.

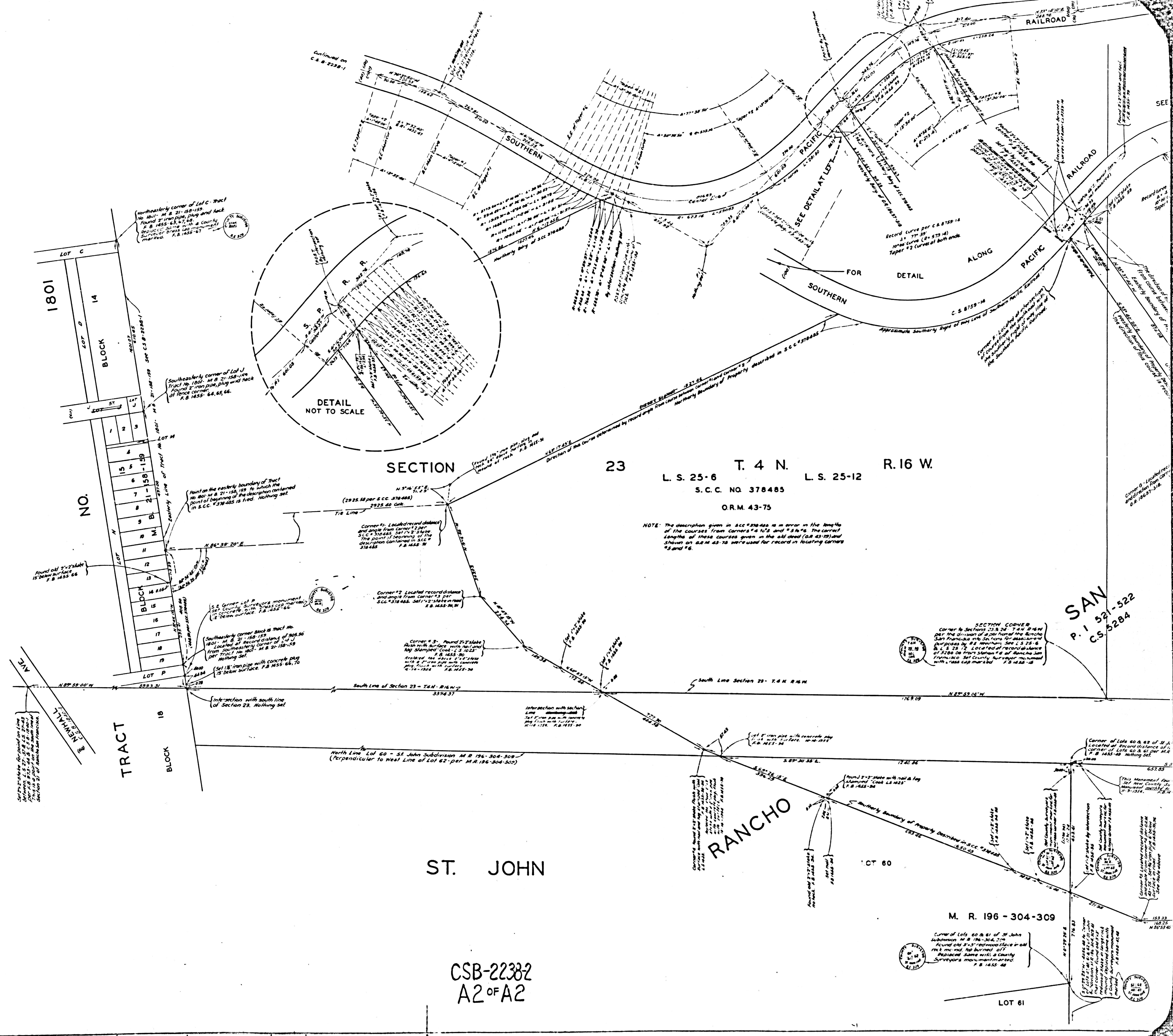
F. B. 1455-15-101

FIELD WORK BY F. C. HOWARD
OFFICE WORK BY K. R. M'PHERSON
C. E. DROWN
CHECKED BY K. R. M'PHERSON

REVISED AUG 22, 1951 C.E.D.
REVISED DEC 1953 C.E.D.
REVISED NOVEMBER, 1954 G.D.B.

Easterly Boundary of Rancho San Francisco - See C.S. B-2238-1, 2, 3, 4, 5, 6, 7, 8, 9, 10, 11, 12, 13, 14, 15, 16, 17, 18, 19, 20, 21, 22, 23, 24, 25, 26, 27, 28, 29, 30, 31, 32, 33, 34, 35, 36, 37, 38, 39, 40, 41, 42, 43, 44, 45, 46, 47, 48, 49, 50, 51, 52, 53, 54, 55, 56, 57, 58, 59, 60, 61, 62, 63, 64, 65, 66, 67, 68, 69, 70, 71, 72, 73, 74, 75, 76, 77, 78, 79, 80, 81, 82, 83, 84, 85, 86, 87, 88, 89, 90, 91, 92, 93, 94, 95, 96, 97, 98, 99, 100.

CSB-2238-2
A1 OF A2



SECTION 23

T. 4 N. R. 16 W. L.S. 25-6 L.S. 25-12

S.C.C. NO. 378485

O.R.M. 43-75

NOTE: The description given in S.C.C. 378485 is in error in the lengths of the courses from corners #4, #5 and #6 to #7. The correct lengths of these courses given in the old deed (S.C. 43295) and shown on O.R.M. 43-75 were used for record in locating corners #4 and #6.

SAN
P. 1 521-522
C.S. 5284

ST. JOHN

CSB-22382
A2 OF A2

M. R. 196 - 304 - 309

LOT 61