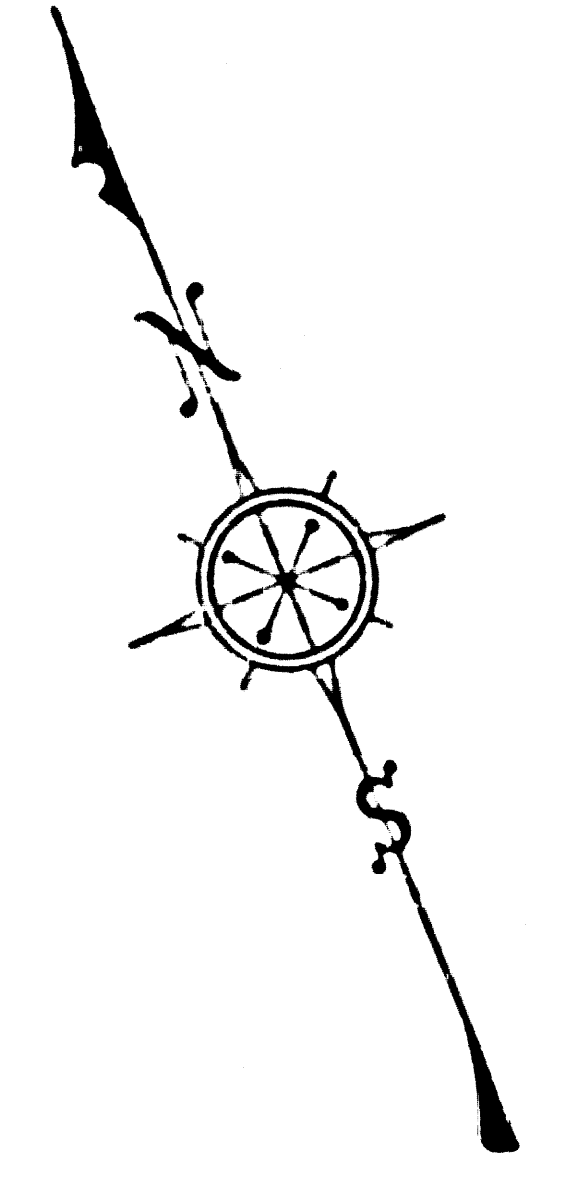
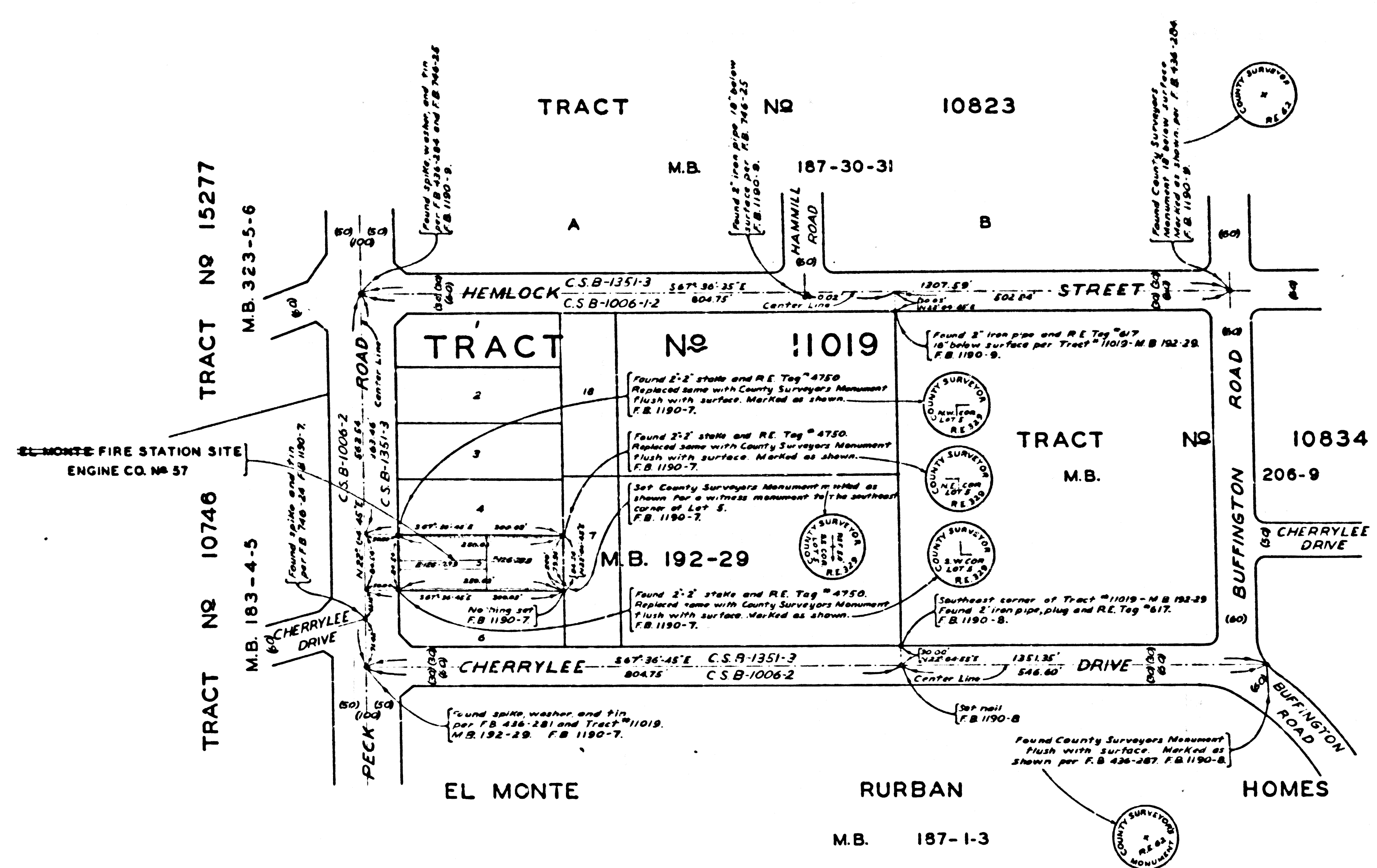


MARGINAL MAP  
SHOWING  
TOPOGRAPHY  
SCALE = 1 INCH = 10 FT.

FIELD WORK BY.....F.H. BLANCHARD  
OFFICE WORK BY.....R.E. SNYDER  
CHECKED BY.....D.A. WHITE  
FIELD BOOK 1190-5-14

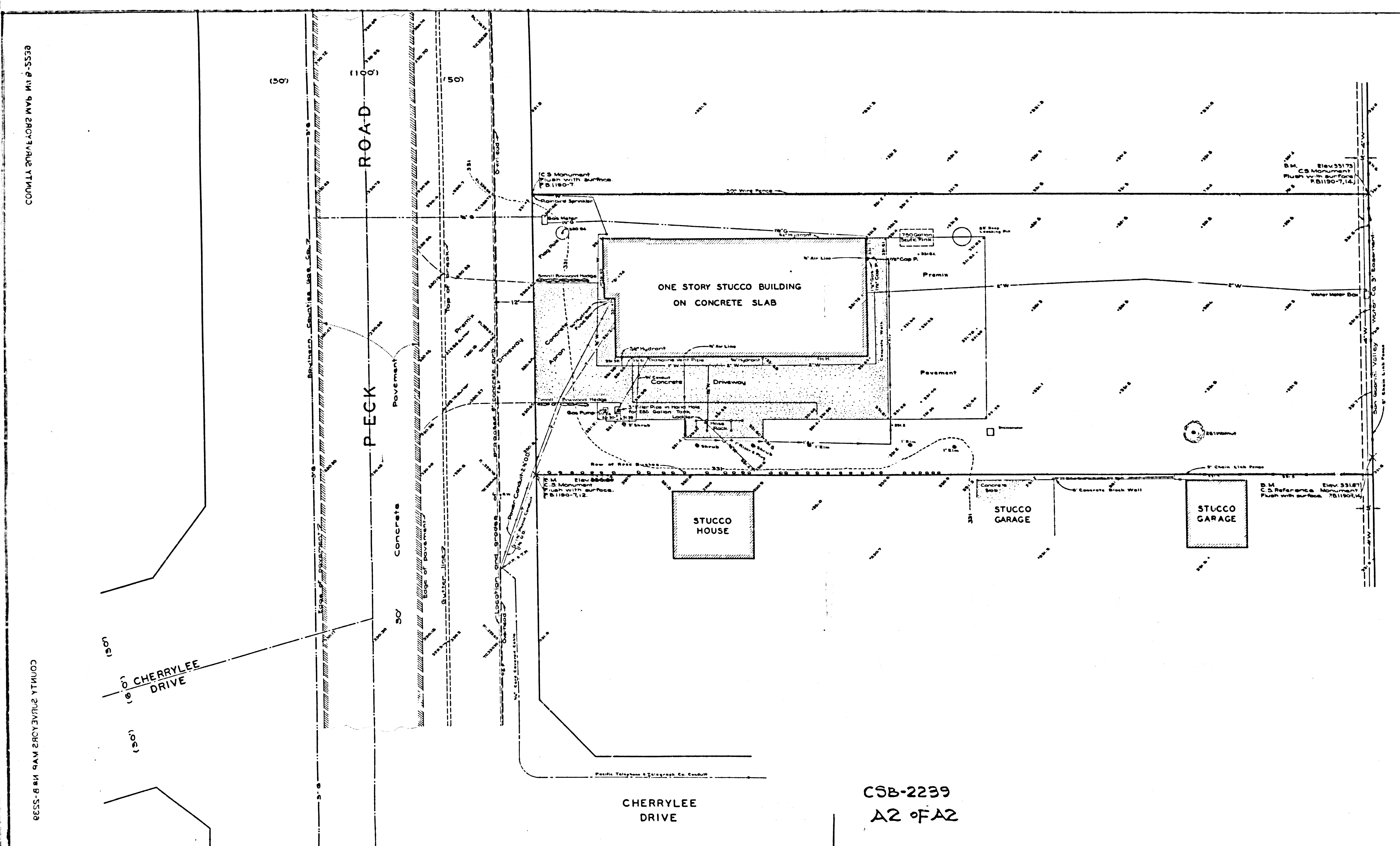
DATUM - MEAN SEA LEVEL  
ELEVATIONS SHOWN HEREON ARE BASED UPON B.M. 1115  
13-18 THE ELEVATION OF WHICH WAS DETERMINED  
U.S.G.S. BULLETIN 766 ELEVATION OF TRIANGULA-  
TION STATION "GABRIEL" (U.S. 2001) - U.S.C. & G.S.  
STATEMENT OF 1923.



MAP OF  
LOS ANGELES COUNTY FIRE STATION SITE N<sup>o</sup>57  
COUNTY OF LOS ANGELES  
IN MAP OF THE  
CONSOLIDATED FIRE PROTECTION DISTRICT  
EL MONTE FIRE STATION SITE - ENGINE CO. N<sup>o</sup> 57  
BEING LOT 5 - TRACT N<sup>o</sup> 11019 - M.B. 192 - 29  
COUNTY SURVEYORS MAP N<sup>o</sup> B-2239  
SCALE: - 1 INCH = 100 FT.

JOB NUMBER 0157  
C.E. ARNOLD - COUNTY SURVEYOR  
SURVEYED - MAR. 1950  
SURVEYED ON REQUEST OF THE COUNTY FORESTER  
AND FIRE WARDEN UNDER SEC. 79, ORD. 4089, BY  
LETTER DATED MARCH 4, 1950 & E.O. DATED JAN. 13, 1930  
BEARINGS ARE BASED ON THE BEARING OF  
PECK ROAD AS SHOWN ON C.S.B. - 1351 - 3  
F.B. 1190 - 5 - 14  
FIELD WORK BY.....F.H. BLANCHARD  
OFFICE WORK BY.....W.E. LESHER  
CHECKED BY.....K.R. McPHERSON

C9B-2239  
A10FA2



CONTRACT SURVEY MAP No. B-5538

CONTRACT SURVEY MAP No. B-5538

MARGINAL MAP  
 SHOWING  
 TOPOGRAPHY  
 SCALE = 1 INCH = 10 FT.  
 FIELD WORK BY..... F.H. BLANCHARD  
 OFFICE WORK BY..... R.E. SNYDER  
 CHECKED BY..... R.E. SNYDER  
 FIELD BOOK 1190-5-14

DATUM - MEAN SEA LEVEL.  
 ELEVATIONS SHOWN HEREON ARE BASED UPON B.M. 1916  
 (L.B. 783-18) THE ELEVATION OF WHICH WAS DETERMINED  
 FROM U.S.G.S. BULLETIN 768 ELEVATION OF TRIANGULATION  
 STATION "GABRIEL" (U.S. 288) - U.S.C.G.S.  
 ADJUSTMENT OF 1923.

CSB-2239  
 A2 OF A2