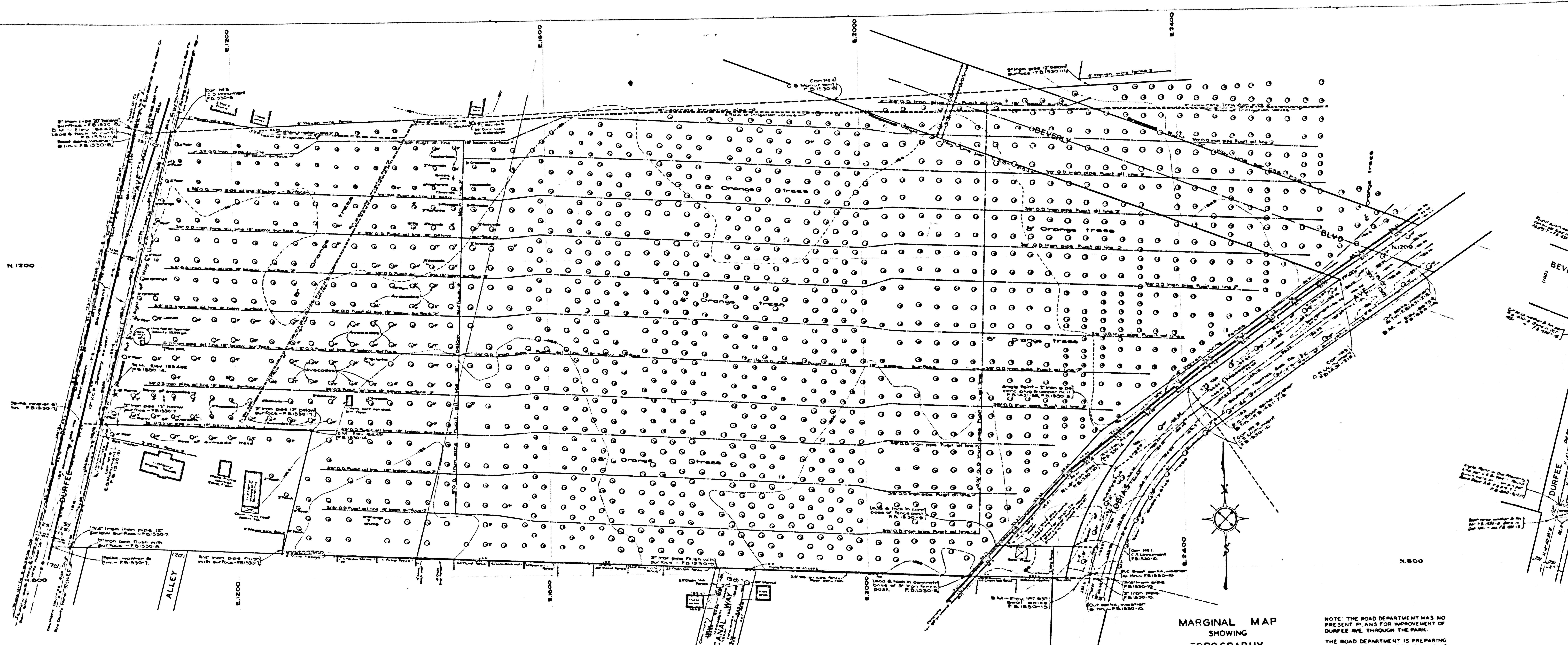



PICO
 COUNTY OF LOS ANGELES
 MAP OF
NORTH RANCHITO PARK
 BEING
 A PORTION OF LOTS 47 AND 51 OF RANCHO
 PASO DE BARTOLO, PER D.M. 999-81-93
 COUNTY SURVEYORS MAP NO B-2246
 SCALE-1 INCH = 100 FEET
 JOB NUMBER 005498
 C. E. ARNOLD-COUNTY SURVEYOR
 SURVEYED MARCH 1949; AUGUST 1950
 SURVEYED UNDER INSTRUCTIONS OF THE
 BOARD OF SUPERVISORS PER ORDER DATED
 JANUARY 4, 1949
 BEARINGS ARE BASED ON THE BEARING OF
 DURFEE AVENUE AS SHOWN ON C.S.B-2104
 INDEX 37

MARGINAL MAP
 NOT TO SCALE
 ADDED OCT. 1951-T.M.I.

AS NO
 CNT OF
 4.
 PARING
 1. BLVD
 JUNE 1, 1950

CSB-2246
 A1 OF A2



SEE SURVEY DIVISION FILE MAP NO. 90-22 FOR LATEST TOPOGRAPHY

CSB-2246
A2 OF A2

MARGINAL MAP
SHOWING
TOPOGRAPHY
SCALE - 1 INCH = 40 FT.
FIELD WORK BY L.L. BROWN
OFFICE WORK BY W.G. VAN DEREN
D.A. WHITE
CHECKED BY R.E. SNIDER
PLANE TABLE SHEET D-301

NOTE: THE ROAD DEPARTMENT HAS NO PRESENT PLANS FOR IMPROVEMENT OF DURFEE AVE. THROUGH THE PARK. THE ROAD DEPARTMENT IS PREPARING PLANS FOR OPENING OF BEVERLY BLVD. AND TOBIAS AVE. CONNECTION. JUNE, 1950.

DATUM - MEAN SEA LEVEL
ELEVATIONS SHOWN HEREON ARE BASED UPON B.M. #12718 B 1326-373 THE ELEVATION OF WHICH WAS DETERMINED FROM ROAD DEPT. ELEVATION OF ROAD DEPT. B.M. #12718 B 1326-373 WITH SEWER CIRCUIT CORRECTION. SEE P.B. 1226-5.
Revised - January 10, 1951 - R.E.S.