

MAP OF  
 LOS ANGELES COUNTY FIRE STATION SITE N<sup>o</sup>54  
 COUNTY OF LOS ANGELES  
 IN MAP OF THE  
 CONSOLIDATED FIRE PROTECTION DISTRICT  
 HOWARD FIRE STATION SITE-ENGINE CO. N<sup>o</sup> 54  
 BEING  
 LOTS 13 & 14 OF BLOCK 58, M.R. 22-61 INDEX - 26  
 IN THE TOWNSITE OF HOWARD  
 COUNTY SURVEYORS MAP N<sup>o</sup> B-2247  
 SCALE: 1 INCH = 50 FEET

JOB NUMBER 0188  
 C.E. ARNOLD — COUNTY SURVEYOR  
 SURVEYED APRIL 1950  
 SURVEYED ON REQUEST OF THE COUNTY FORESTER  
 AND FIRE WARDEN UNDER SEC 79, ORD. 4099, BY  
 LETTER DATED MARCH 27, 1950 & B.O. DATED JAN. 13, 1950.  
 BEARINGS ARE BASED ON THE BEARING OF  
 EL SEGUNDO BOULEVARD PER C.S.B. 120-1  
 F.B. 1198-401-420  
 FIELD WORK BY.....C.A. BENSON  
 OFFICE WORK BY.....W.E. LESHER  
 CHECKED BY.....S.H. MILLER

MARGINAL MAP  
 SHOWING  
 TOPOGRAPHY  
 SCALE: 1 INCH = 10 FT.  
 FIELD WORK BY... C.A. BENSON  
 OFFICE WORK BY... R.E. SNYDER  
 J.B. MACOMBER  
 CHECKED BY... R.E. SNYDER

DATUM - MEAN SEA LEVEL  
 ELEVATIONS SHOWN HEREON ARE BASED ON  
 THE ROAD DEPARTMENT ELEVATION OF B.M.  
 S.Y. 990 & S.Y. 991. ROAD DEPARTMENT F.B.  
 S.Y. VOL. 2, PG. 395

NOTE:  
 THE ROAD DEPARTMENT HAS NO PLANS  
 FOR FUTURE IMPROVEMENT OF STREETS  
 ADJACENT TO THE FIRE STATION.

C9B-2247  
 A1 OF A2

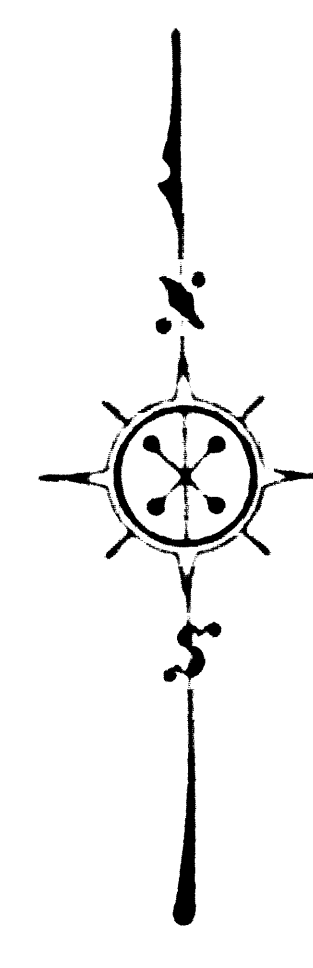
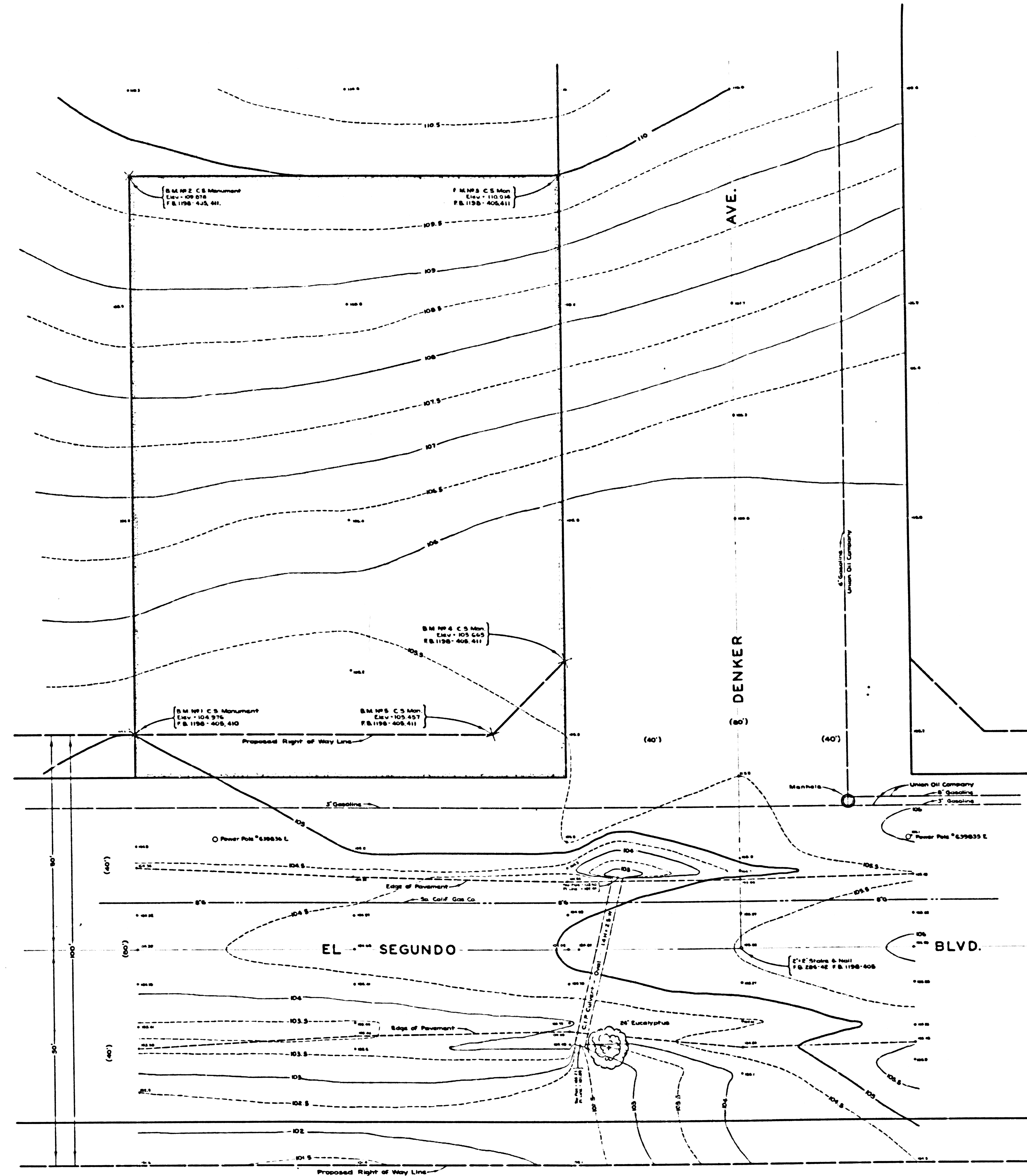
F.S.S.-B 24 24M 270V24R2 27U1003

CONSULT SURVEYOR'S MAP N<sup>o</sup> B-2247



CONTOUR SURVEY MAP NO B-5541

CONTOUR SURVEY MAP NO B-5541



MARGINAL MAP  
SHOWING  
TOPOGRAPHY  
SCALE: 1 INCH = 10 FT.  
FIELD WORK BY... C. A. BENSON  
OFFICE WORK BY... R. E. SNYDER  
CHECKED BY... J. B. MACOMBER

DATUM - MEAN SEA LEVEL  
ELEVATIONS SHOWN HEREON ARE BASED ON  
THE ROAD DEPARTMENT ELEVATION OF B.M.  
S.V. 990 & S.V. 991. ROAD DEPARTMENT F.B.  
S.V. VOL. 2, PG. 305

NOTE:  
THE ROAD DEPARTMENT HAS NO PLANS  
FOR FUTURE IMPROVEMENT OF STREETS  
ADJACENT TO THE FIRE STATION.

CSB-2247  
AZ OF AZ