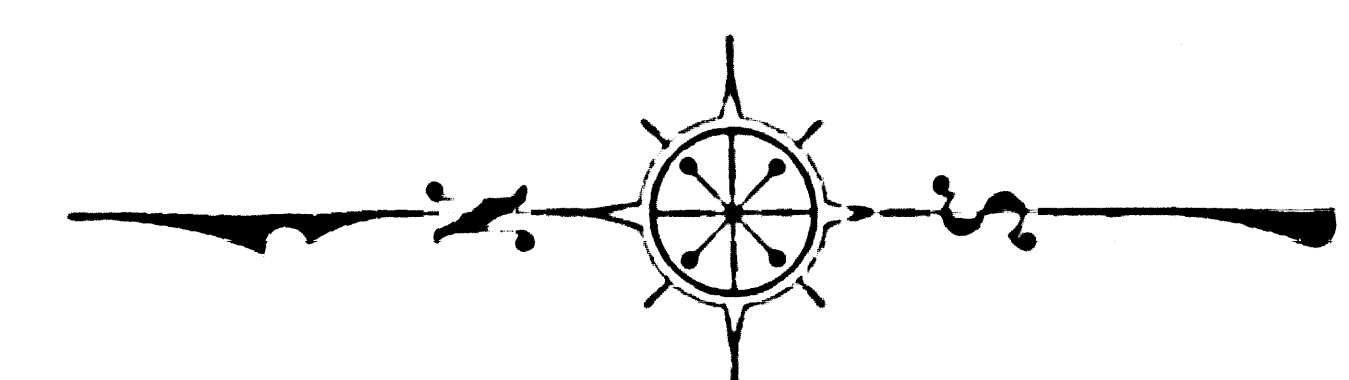
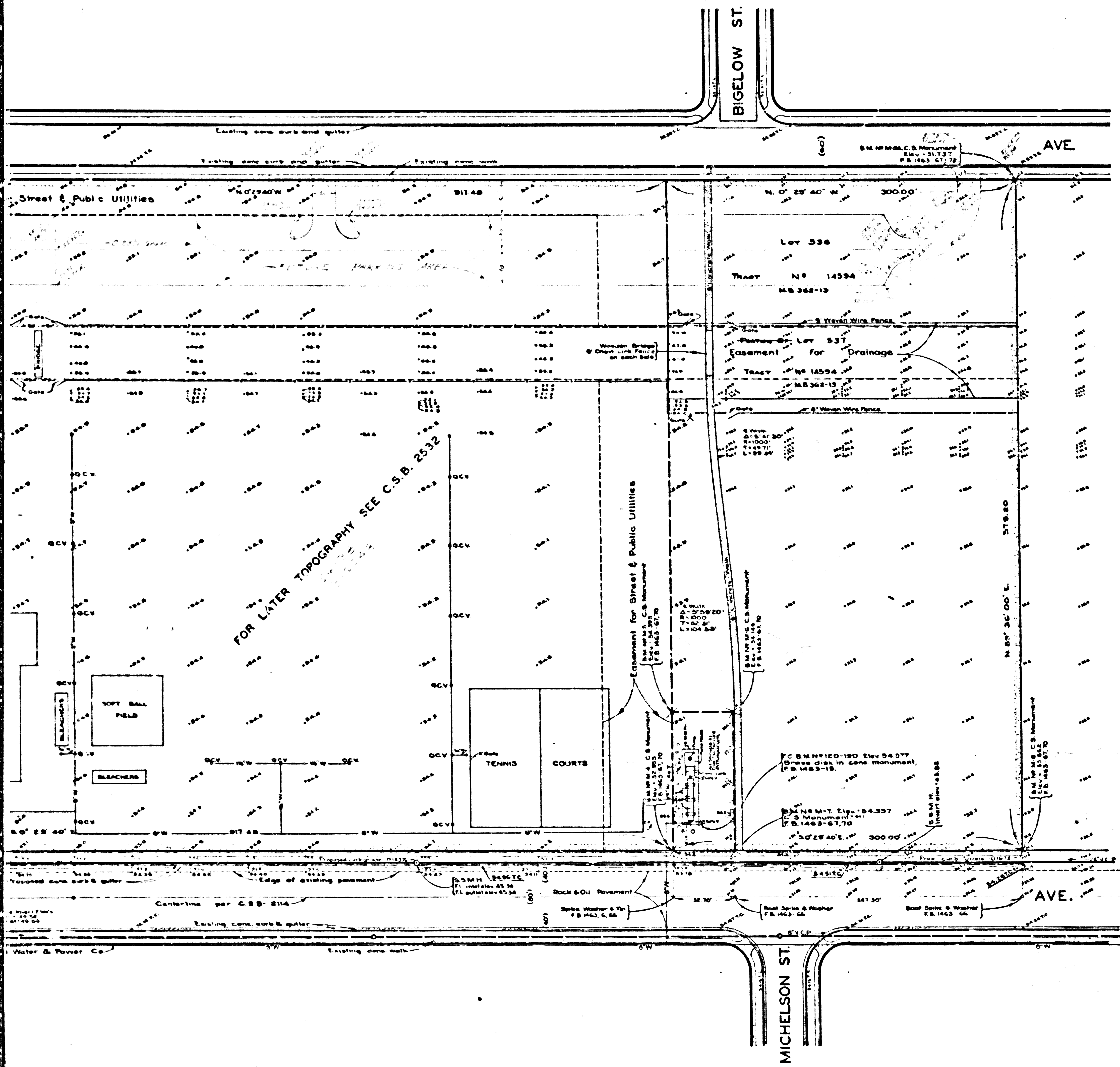


8455 - B ON 9AM 2903VAPUC YTAUOC



COUNTY OF LOS ANGELES
 TOPOGRAPHIC MAP OF
MAYFAIR PARK
 COUNTY SURVEYORS MAP NO. B-2248
 SCALE: 1 INCH = 40 FEET

JOB NUMBER 8510
 C. E. ARNOLD - COUNTY SURVEYOR
 SURVEYED JUNE 1948-APRIL 1950

SURVEYED ON REQUEST OF THE DIRECTOR,
 DEPARTMENT OF PARKS & RECREATION UNDER
 SEC. 79 ORD. 4098 BY LETTERS DATED APRIL
 24, 1948 & AUGUST 15, 1949.

BEARINGS ARE BASED ON THE CALIFORNIA
 COORDINATE SYSTEM, ZONE 7, PER CHAPTER
 1307 STATUTES 1947; SEE C.S. 8423.

F.B. 1483-8 TO 100.
 FIELD WORK BY..... C. A. BENSON
 OFFICE WORK BY..... J. B. MACOMBER
 L. DE TILLA
 CHECKED BY..... D. A. WHITE
 R. E. SNYDER

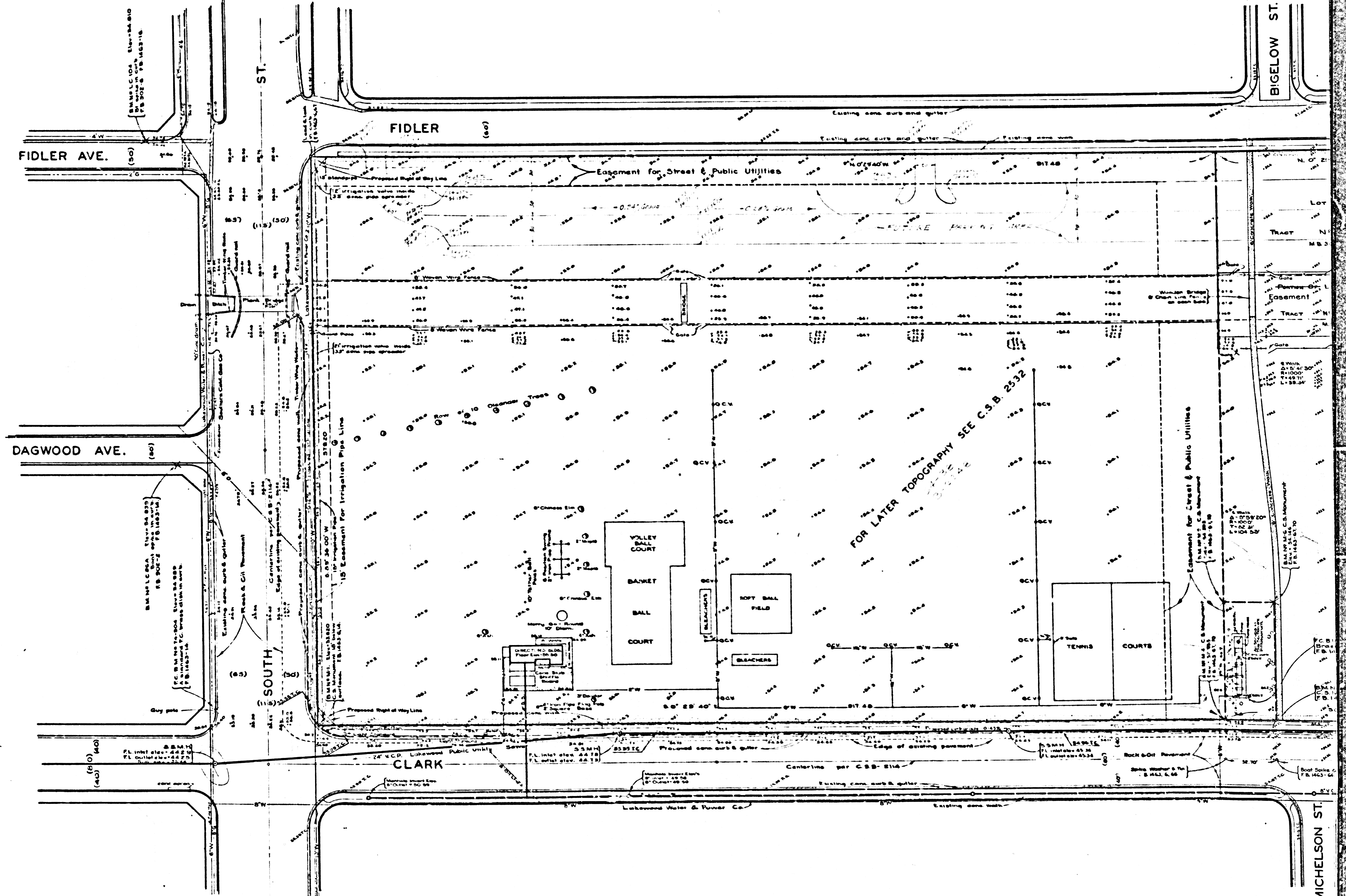
DATUM - MEAN SEA LEVEL
 ELEVATIONS SHOWN HEREON ARE BASED ON THE 1934
 U.S. C. & G. S. ADJUSTMENT OF B.M.'S. 1923 BIXBY
 (U.S. 2186), 1998-1932 (U.S. 2586) AND 'F' 108 - 1932
 (U.S. 2926), F.B. 843-40.

FOR BOUNDARY SURVEY SEE C.S.B.-2114
 Urban Oil Line Removed 7-9-52 C.J.G.

Additional Topography North of Basket Ball Court by J.S. Coates August 1947
 and by C.B. Sitter and D.E. Murpherson September, 1952
 FOR LATER TOPOGRAPHY SEE C.S.B. 2532

C5B-2248
 A1 OF A2

CONV. A. 2904E/022 W.P. NO. B-5518



CSB-2248
A2 of A2