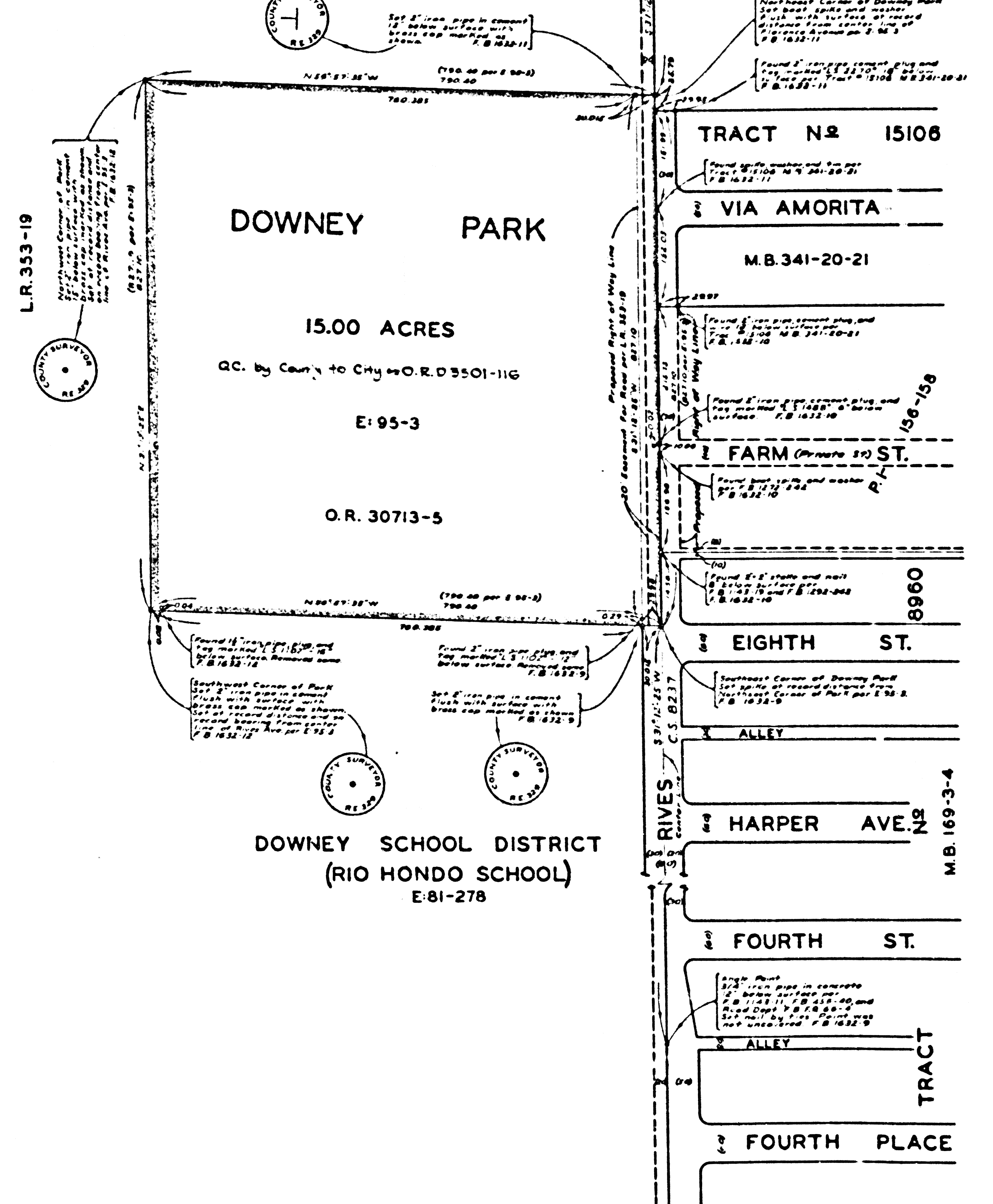


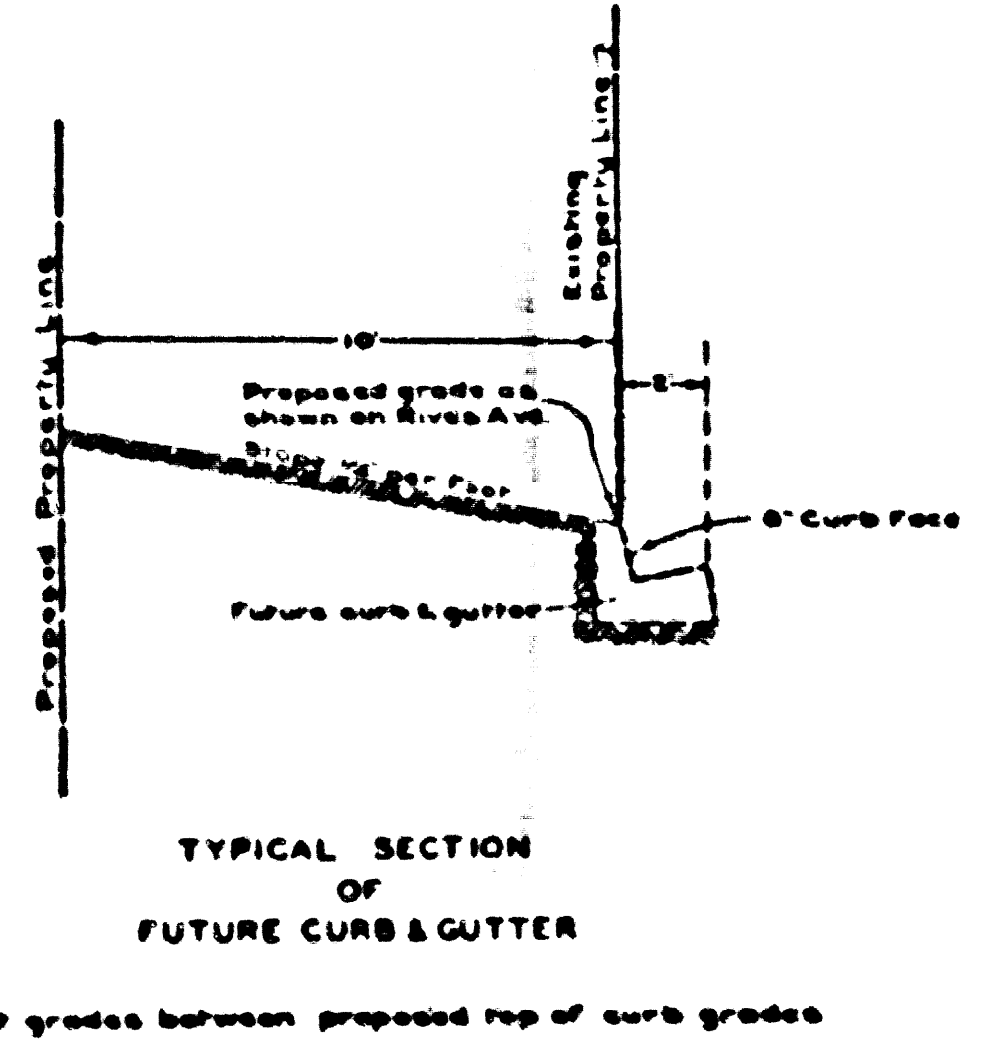
PART OF THE RANCHO SANTA GERTRUDES  
 FINALLY CONFIRMED TO JAMES P. M'FARLAND AND JOHN G. DOWNEY  
 P. 1-156-158



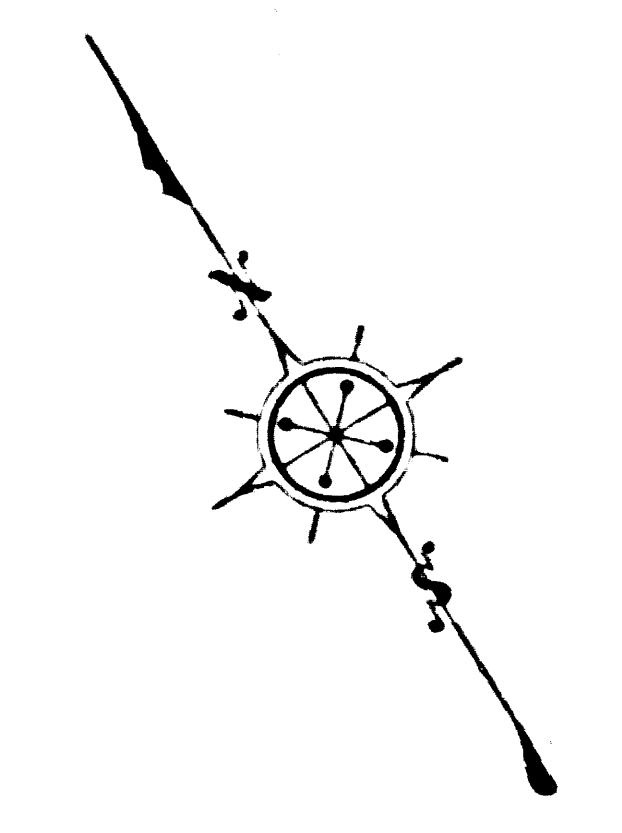
COUNTY OF LOS ANGELES  
 MAP OF  
**DOWNEY PARK**  
 BEING  
 A PORTION OF RANCHO SANTA GERTRUDES  
 FINALLY CONFIRMED TO JAMES P. M'FARLAND  
 AND JOHN G. DOWNEY — P. 1-156-158  
 COUNTY SURVEYORS MAP N<sup>o</sup> B-2254  
 SCALE - 1 INCH = 100 FT.

JOB NUMBER 8588  
 C. E. ARNOLD — COUNTY SURVEYOR  
 SURVEYED MAY 1950  
 SURVEYED ON REQUEST OF THE DIRECTOR PARKS AND  
 RECREATION UNDER SEC. 79, ORD. 4099, BY LETTER  
 DATED MARCH 7, 1950 & B.O. DATED MAY 21, 1948  
 BEARINGS ARE BASED ON THE BEARING OF  
 RIVES AVENUE AS SHOWN ON C.S. 8237  
 F. B. 1632-5-34  
 FIELD WORK BY.....C.A. BENSON  
 OFFICE WORK BY.....W.E. LESHER  
 CHECKED BY.....K.R. M'PHERSON

CSB-2254  
 A1 OF A2

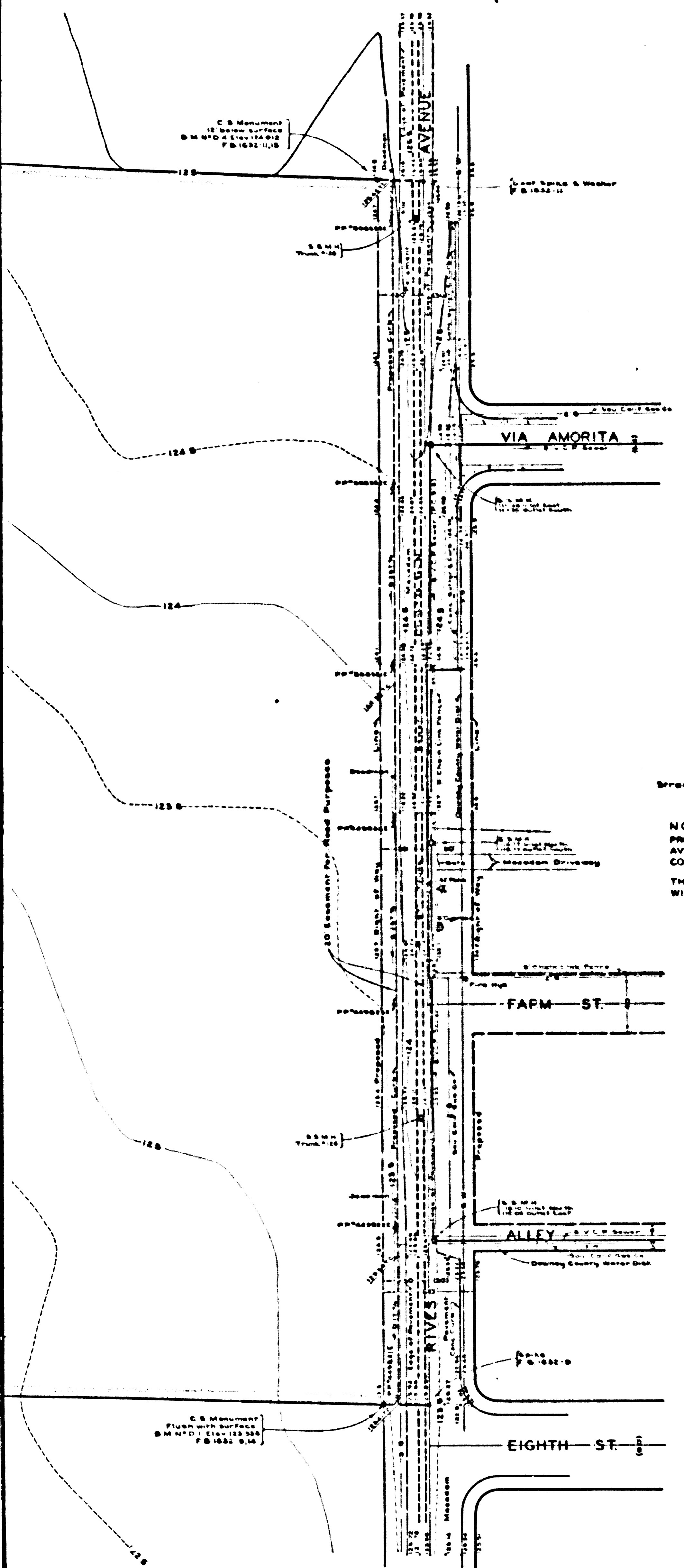


NOTE  
 PROPOSED CURB GRADES ON WEST SIDE OF RIVES  
 AVENUE ESTABLISHED BY COUNTY SURVEYOR TO  
 CONFORM TO ESTABLISHED CURBS ON EAST SIDE.  
 THE ROAD DEPARTMENT HAS NO PLANS FOR FUTURE  
 WIDENING OF RIVES AVENUE.



MARGINAL MAP  
 SHOWING  
 TOPOGRAPHY  
 SCALE = 1 INCH = 40 FT.  
 FIELD WORK BY.....C. A. BENSON  
 OFFICE WORK BY.....H. D. HEBER  
 R. E. SNYDER  
 CHECKED BY.....J. B. MACOMBER  
 FIELD BOOK 1832

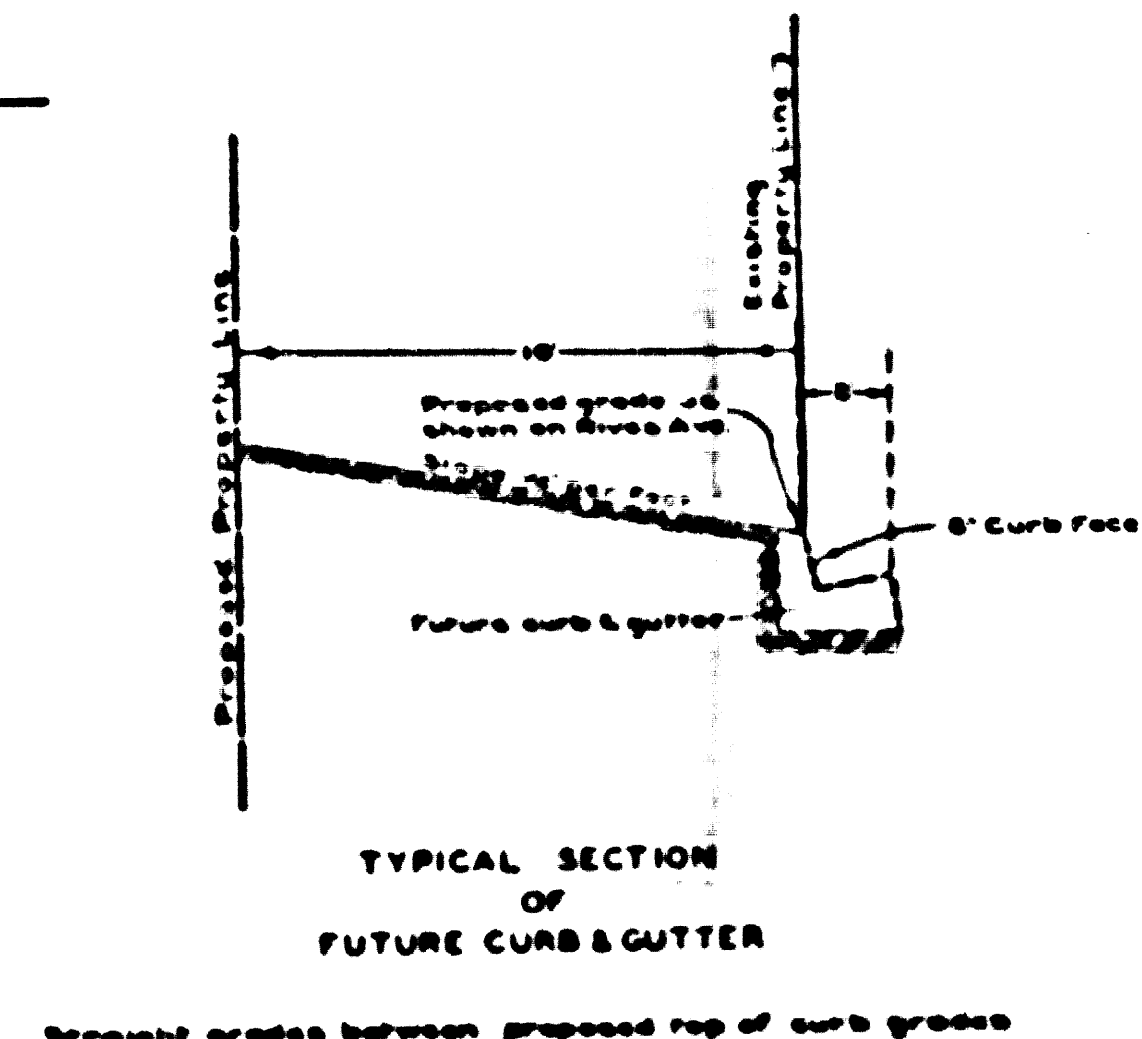
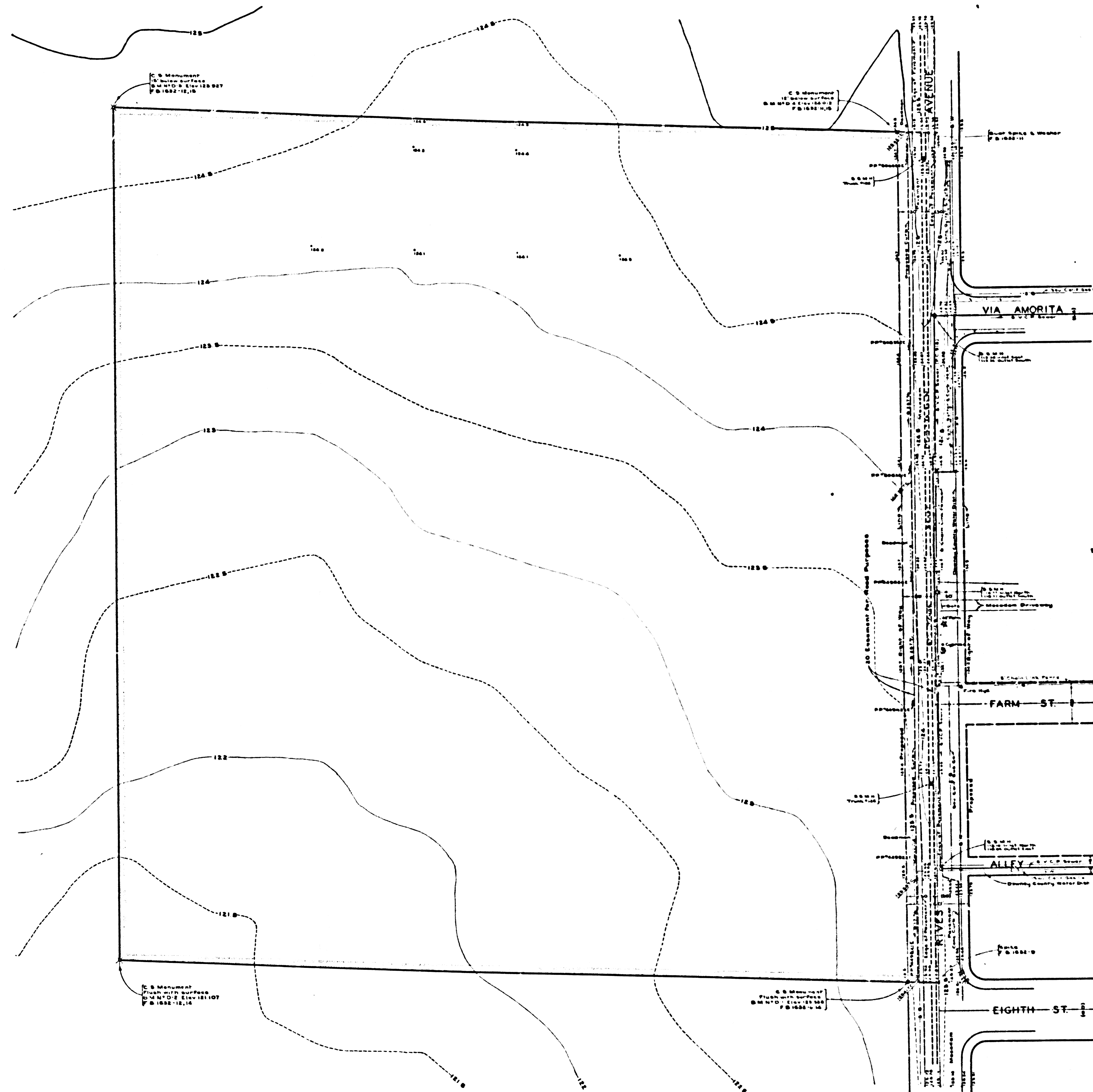
DATUM - MEAN SEA LEVEL  
 ELEVATIONS SHOWN HEREON ARE BASED  
 ON ROAD DEPT. ELEV. OF U.S.G.S. B.M. AT  
 DOWNEY AVE. AND 3 P.P.R. 813 388 ROAD DEPT.  
 F.B. 41-10 LB 816-14



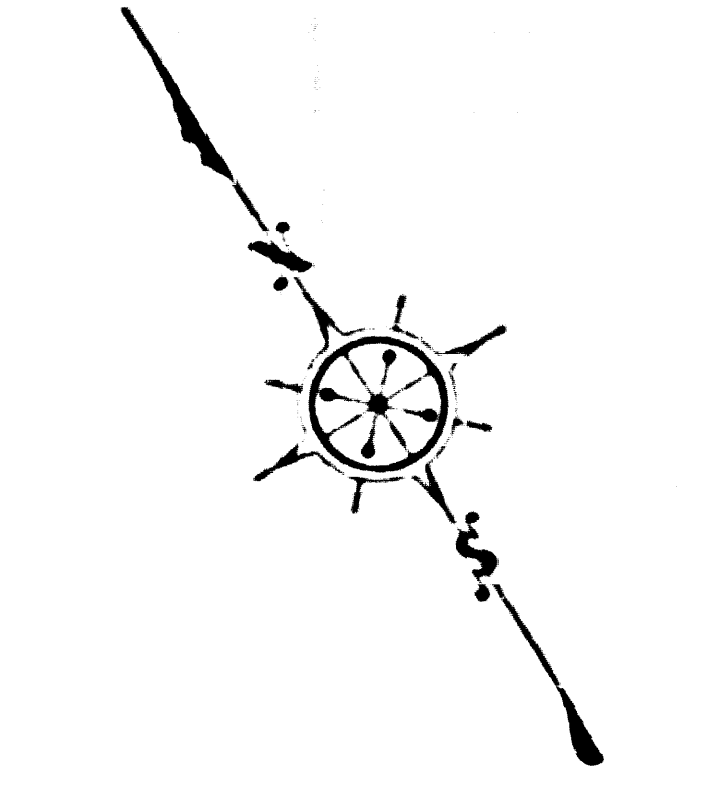


CONSULT SURVEYORS P.A. NO. F-5524

CONSULT SURVEYORS P.A. NO. F-5524



NOTE  
 PROPOSED CURB GRADES ON WEST SIDE OF RIVES AVENUE ESTABLISHED BY COUNTY SURVEYOR TO CONFORM TO ESTABLISHED CURBS ON EAST SIDE. THE ROAD DEPARTMENT HAS NO PLANS FOR FUTURE WIDENING OF RIVES AVENUE.



MARGINAL MAP  
 SHOWING  
 TOPOGRAPHY  
 SCALE = 1 INCH = 40 FT.  
 FIELD WORK BY.....C. A. BENSON  
 OFFICE WORK BY.....M. D. HEBER  
 R. E. SNYDER  
 CHECKED BY.....J. B. MACOMBER  
 FIELD BOOK 1832

DATUM - MEAN SEA LEVEL  
 ELEVATIONS SHOWN HEREON ARE BASED ON ROAD DEPT. L.E.V. OF U.S.G.S. B.M. AT DOWNEY AVE. AND SPRING (S 38) ROAD DEPT. F.B. 41-10 L.B. 816-16

CSB-2254  
 A2 OF A2