

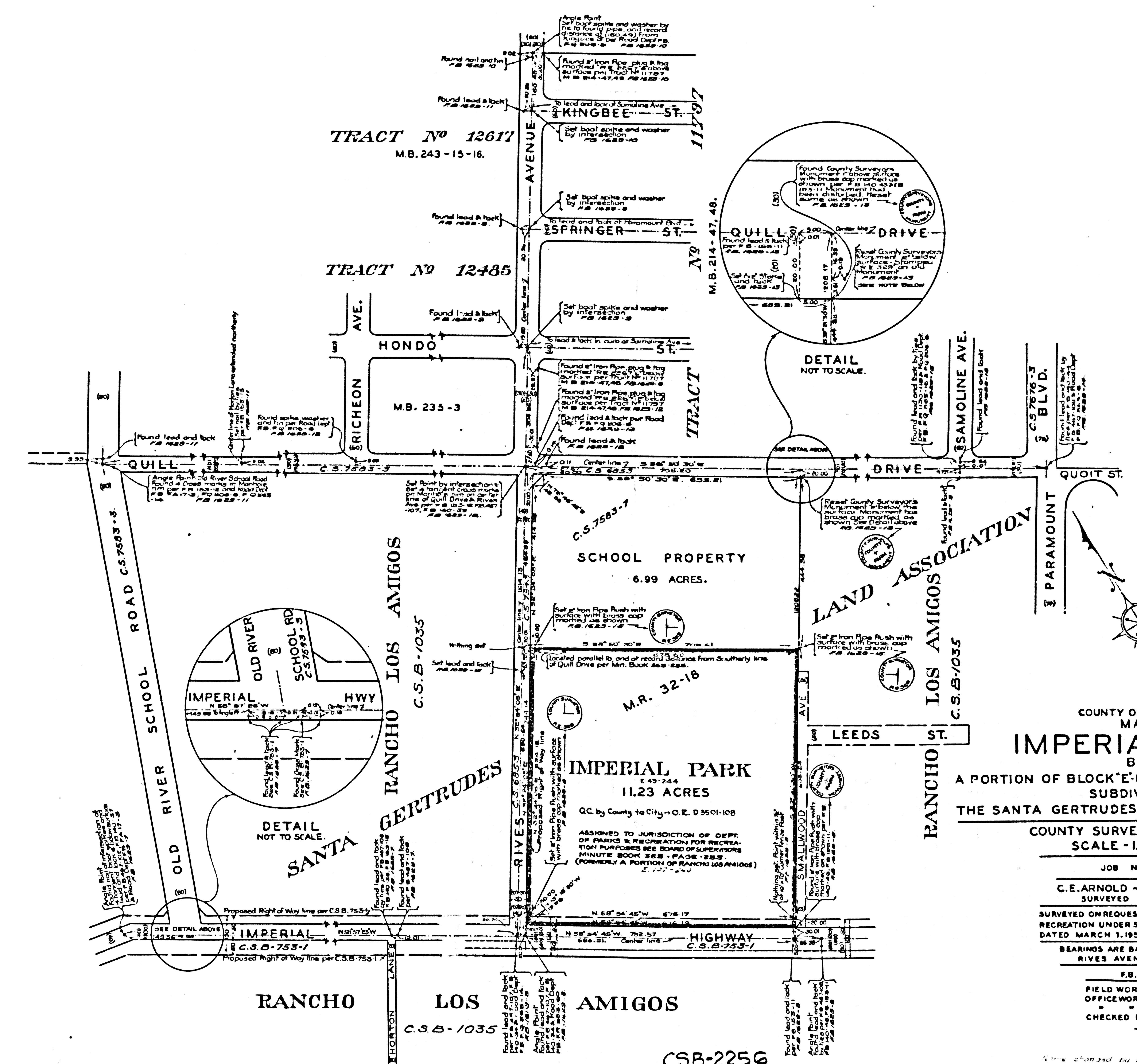
MARGINAL MAP
SHOWING
TOPOGRAPHY
SCALE = 1 INCH = 40 FT.

FIELD WORK BY.....C. A. BENSON
OFFICE WORK BY.....R. E. SNYDER
CHECKED BY.....M. D. WEBER
L. DETILLA

FIELD BOOK 1629

DATUM - MEAN SEA LEVEL
ELEVATIONS SHOWN HEREON ARE BASED UPON B.M. 107 (ELEVATION 1130-102) THE ELEVATION OF WHICH WAS DETERMINED FROM ROAD DEPT. B.M. 42E SHOWN IN L.Q. 208-2, BASED UPON ROAD DEPT. DATUM.

NOTE:
THE ROAD DEPT. HAS NO PRESENT PLANS FOR THE FUTURE IMPROVEMENT OF IMPERIAL HIGHWAY OR RIVES AVENUE.
JAN. 1951



COUNTY OF LOS ANGELES
MAP OF
IMPERIAL PARK
BEING
A PORTION OF BLOCK "E" RANCHO SANTA GERTRUDES
SUBDIVIDED FOR
THE SANTA GERTRUDES LAND ASSOCIATION - M.R. 1-502.

COUNTY SURVEYORS MAP NO. B-2256
SCALE - 1 INCH = 100 FT.

JOB NUMBER - 8567.
C. E. ARNOLD - COUNTY SURVEYOR
SURVEYED - APRIL - 1950

SURVEYED ON REQUEST OF THE DIRECTOR OF PARKS AND RECREATION UNDER SEC. 79, ORD. 4099, BY LETTER DATED MARCH 1, 1950 & DATED MAY 21 - 1948.

BEARINGS ARE BASED ON THE BEARING OF RIVES AVENUE PER C.S.B. 753-1.

F.B. 1629 - 5-46.
FIELD WORK BY C.A. BENSON
OFFICE WORK BY W.E. LESHER
CHECKED BY K.R. McPHERSON.

INDEX - 32

CSB-2256
A1 OF A2

