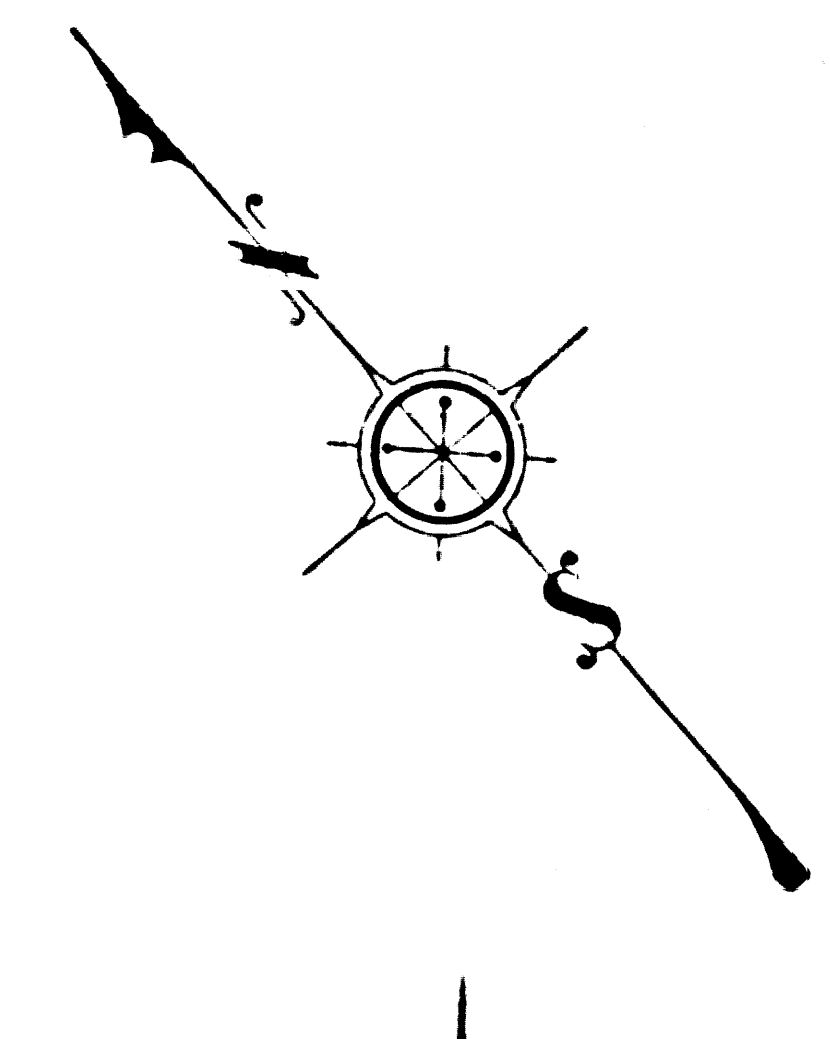


COUNTY OF LOS ANGELES
SORENSEN MAP OF
WEST WHITTIER PARK
 BEING A PORTION OF
RANCHO PASO DE BARTOLO M.R. 23-55-56
 COUNTY SURVEYORS MAP NO. B-2257
 SCALE: 1 INCH = 100 FT.

JOB NUMBER 8591
 C. E. ARNOLD - COUNTY SURVEYOR
 SURVEYED APRIL & MAY 1950
 SURVEYED UNDER INSTRUCTIONS OF THE
 BOARD OF SUPERVISORS PER ORDER DATED
 MARCH 4, 1950.
 BEARINGS ARE BASED ON THE BEARING
 OF BROADWAY AS SHOWN ON C.S.B. 2051-4
 F. B. 1628-5 TO 16

INDEX 37
 FIELD WORK BY A. N. HELLSTROM
 OFFICE WORK BY C. E. DROWN
 CHECKED BY K. R. M'PHERSON
 Name changed by Board order 1950-1-9-154-206

MAP
 PHYSICAL
 40 FT.
 R. C. BOWERS
 H. D. WEBER
 Y. ITO
 R. E. SNYDER
 E-344
 ALM
 ORDER JAN 005472 BY 466



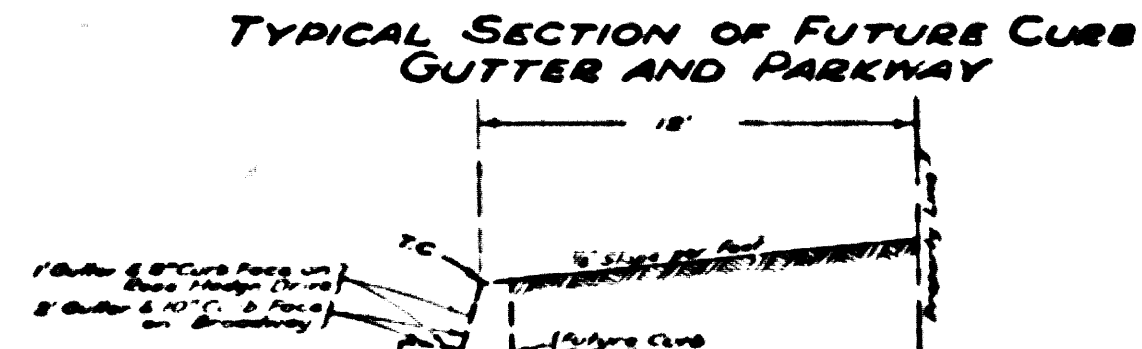
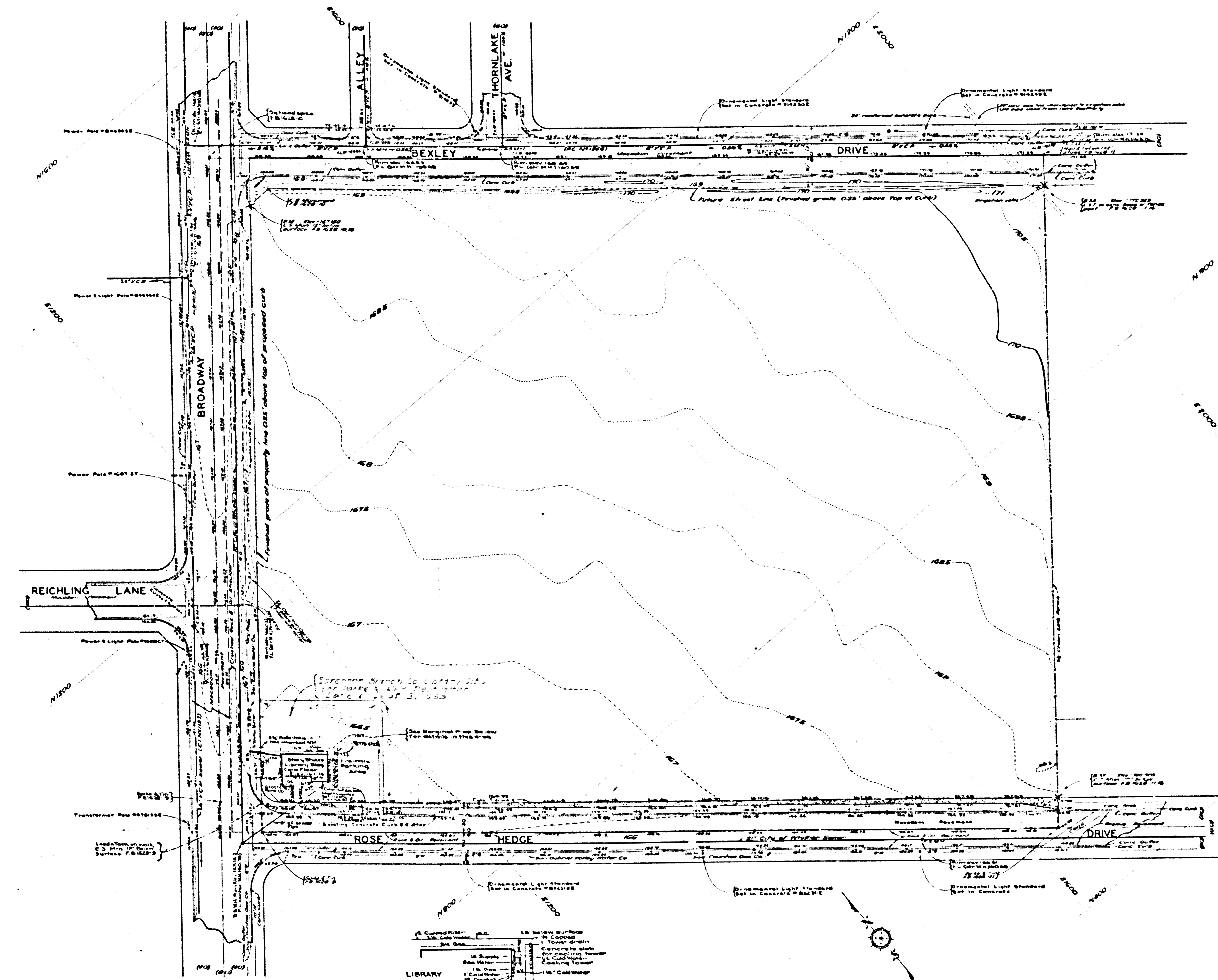
CSB-2257
 A1 OF A2

COUNTY SURVEYORS MAP NO. B-2257

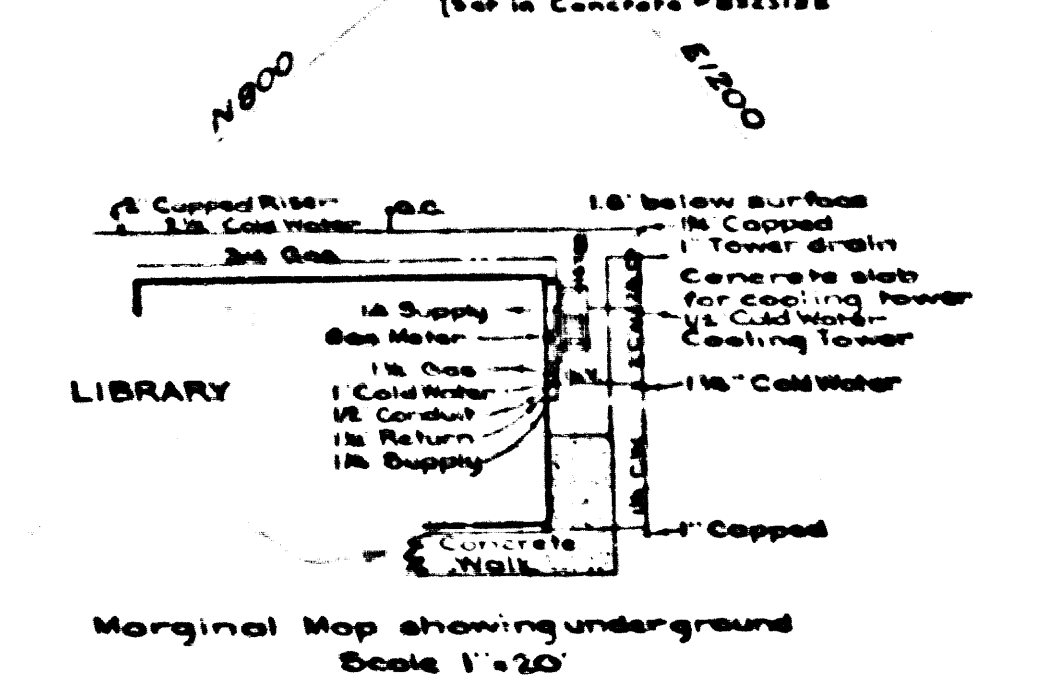
COUNTY SURVEYORS MAP NO. B-2257

COUNTY SURVEYORS MAP NO. B-5523

COUNTY SURVEYORS MAP NO. B-5523



Straight grades between elevations labeled "C"
Proposed curb grades on Broadway and Rose
Hedge Drive established by County Surveyor
to conform to existing curbs.



DATUM - MEAN SEA LEVEL

ELEVATIONS SHOWN HEREON ARE BASED UPON
BM '80-82 (B 178-8) THE ELEVATION OF WHICH
WAS DETERMINED FROM FLOOD CONTROL, BM '77-27
(C.F. 58-589-30)

**MARGINAL MAP
SHOWING
TOPOGRAPHY**

SCALE: 1 INCH = 40 FT.

FIELD WORK BY R.C. BOWERS
FIELD WORK BY H.D. WEBER
Y. ITO
CHECKED BY R.E. SNYDER
PLANE TABLE SHEET E-344
REVISED APRIL 1953 BY A.L.M.
REVISED SEPT. 1956 UNDER J.N. 005172 BY J.C.B.

CSB-2257
A2 OF A2

