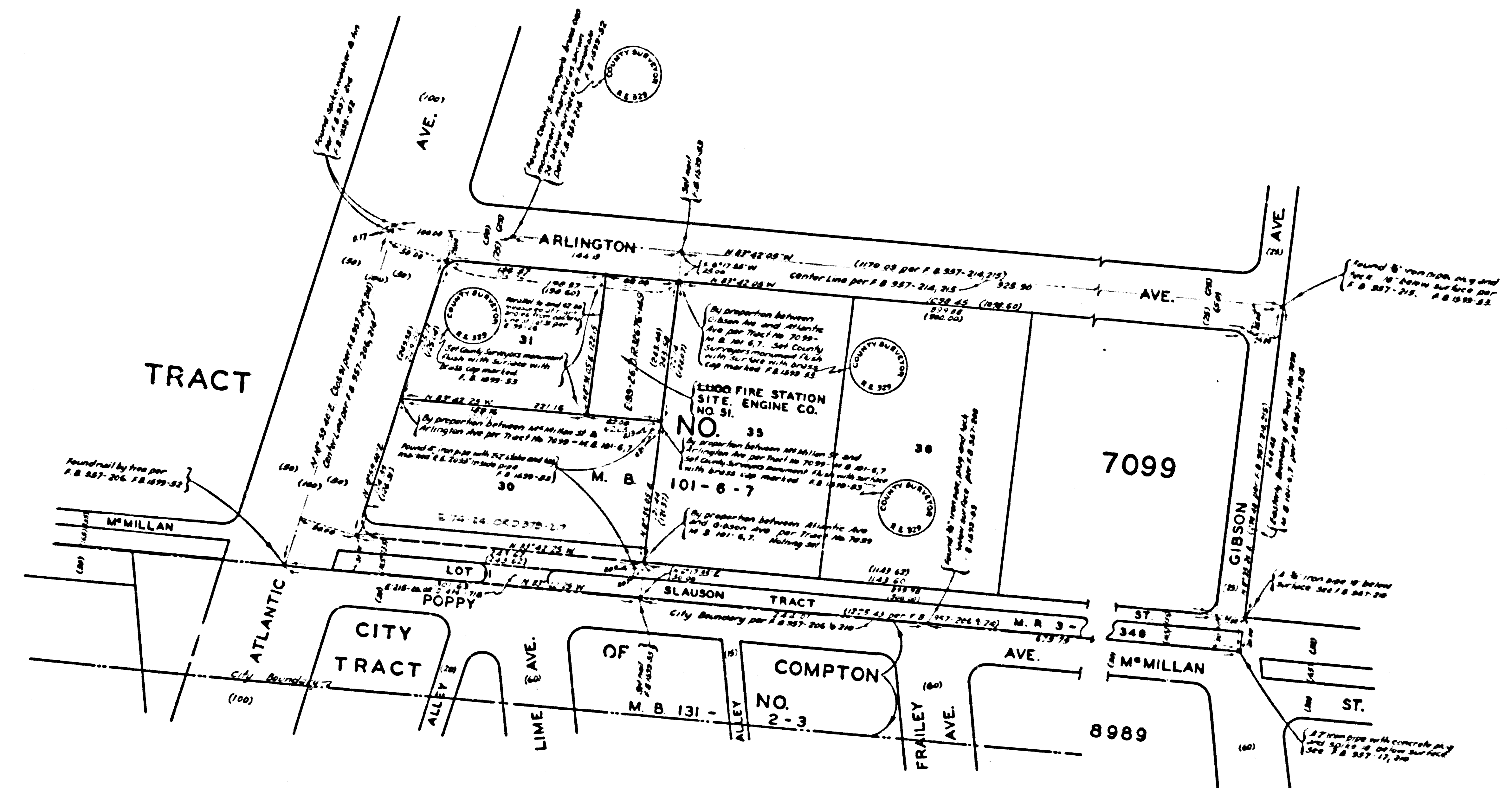


NOTE  
THE ROAD DEPARTMENT HAS NO PLANS FOR  
FUTURE CURB AND SIDEWALK GRADES ON  
ARLINGTON AVENUE.

MARGINAL MAP  
SHOWING  
TOPOGRAPHY  
SCALE = 1 INCH = 10 FT.  
FIELD WORK BY.....J. L. WILLEY  
OFFICE WORK BY.....R. E. SNYDER  
CHECKED BY.....L. DETILLA  
FIELD BOOK 1599

DATUM - MEAN SEA LEVEL  
THE ELEVATIONS SHOWN HEREON ARE BASED  
UPON B.M. 297 (78 857-202) THE ELEVATION  
OF WHICH WAS DETERMINED FROM U.S.C. & G.S.  
B.M.'S 799 (U.S. 2485), A-33 (U.S. 34), O-33  
(U.S. 37), AND 11-32 (U.S. 1) BASED UPON THE  
U.S.C. & G.S. ADJUSTMENT OF 1934.  
Revised June 20, 1952 by W.R.N.  
under J.N. 0263



MAP OF  
LOS ANGELES COUNTY FIRE STATION SITE NO. 51  
COUNTY OF LOS ANGELES  
IN MAP OF THE  
CONSOLIDATED FIRE PROTECTION DISTRICT  
EUGO FIRE STATION SITE  
ENGINE CO. NO. 51  
BEING A PORTION OF LOT 31 OF  
TRACT NO. 7099 M. B. 101-6 & 7  
COUNTY SURVEYORS MAP NO. B-2259  
SCALE: 1 INCH = 50 FT.

JOB NUMBER 0203  
C. E. ARNOLD - COUNTY SURVEYOR  
SURVEYED JULY 1950  
SURVEYED ON REQUEST OF THE CHIEF  
ENGINEER COUNTY FIRE PROTECTION DISTRICTS  
UNDER SEC. 79 ORD. 4099 BY LETTER  
DATED JUNE 28 1950.  
BEARINGS ARE BASED ON THE BEARING  
OF ARLINGTON AVE. AS SHOWN ON TRACT  
NO. 7099 M. B. 101-6 & 7.  
F. & 1599-51-84  
FIELD WORK BY J. L. WILLEY  
OFFICE WORK BY K. R. M'PHERSON  
C. E. DROWN  
CHECKED BY K. R. M'PHERSON

Changes made to boundary of lot as shown  
in red were made July 29, 1951 in order to conform  
to the description in the recorded deed. See E. 59-26

CSB-2259  
A1 OF A1