

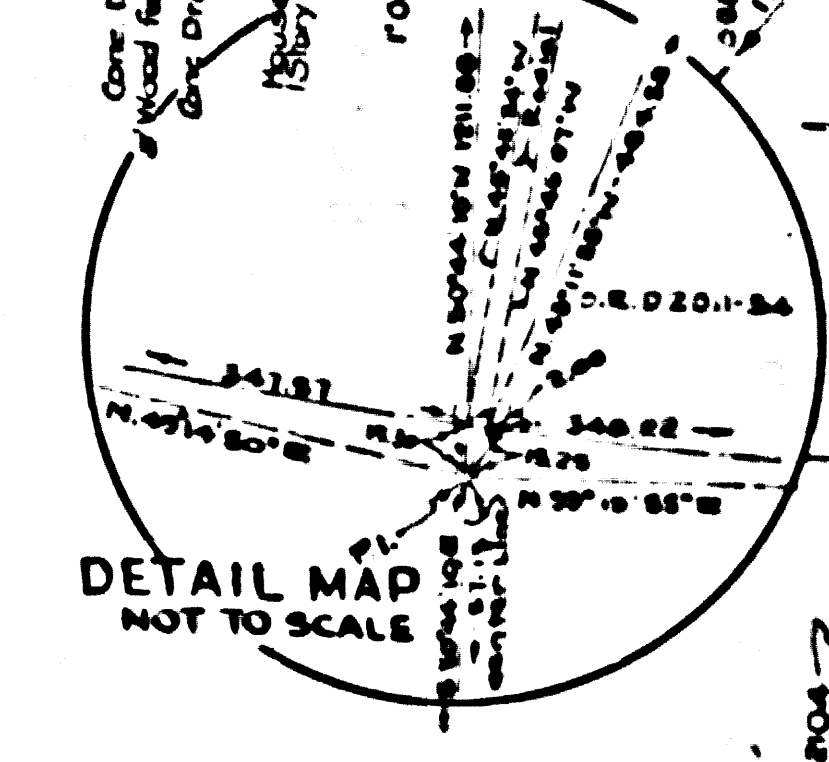
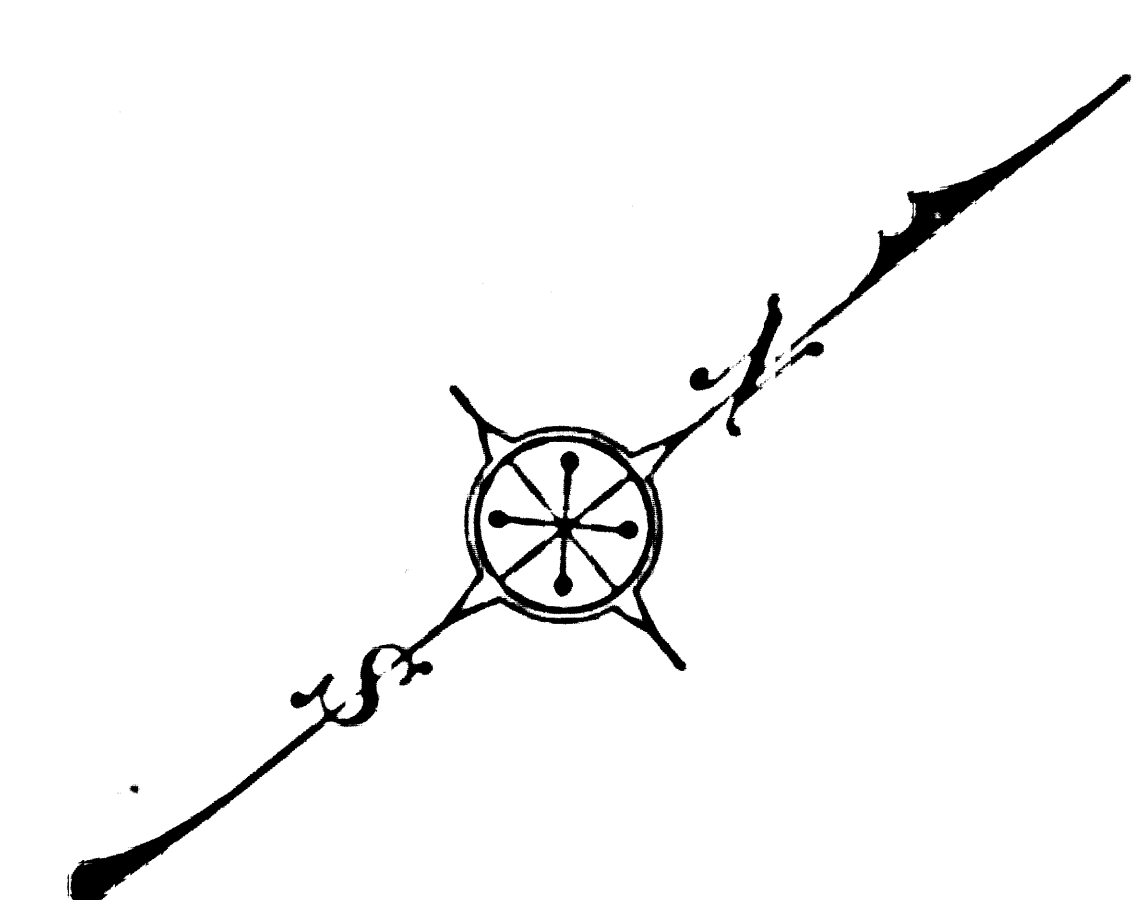
COUNTY OF LOS ANGELES  
 MAP OF  
**PIONEER BOULEVARD**  
 FROM  
 LOS NIETOS ROAD  
 TO  
 BEVERLY BOULEVARD  
 COUNTY SURVEYORS MAP NO B-2260  
 SHEET 2 OF 2 SHEETS  
 SCALE - 1 INCH = 50 FT.

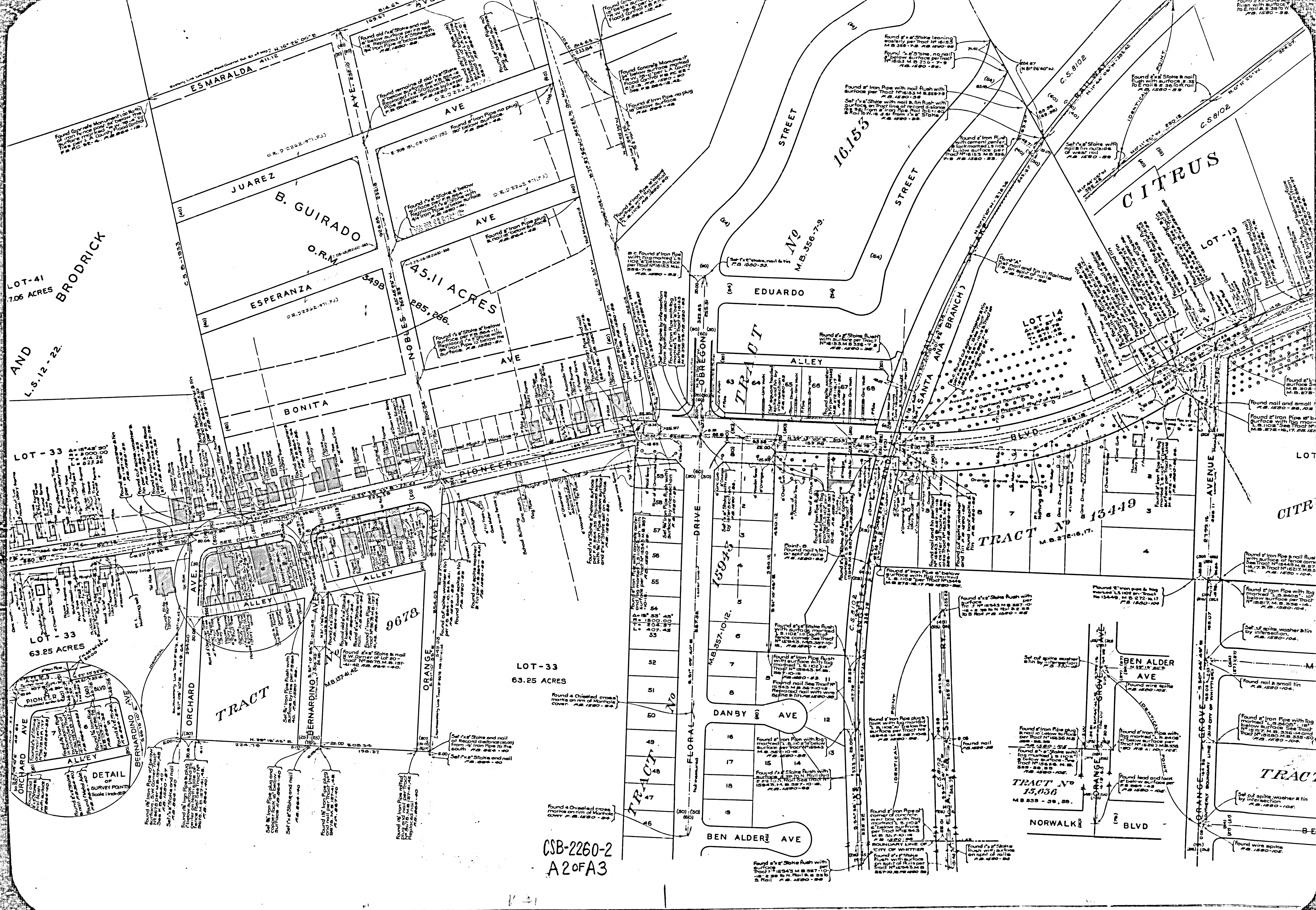
JOB NUMBER-0600  
 C.E. ARNOLD COUNTY SURVEYOR  
 SURVEYED AUG 1948 - JAN 1951  
 SURVEYED ON REQUEST OF THE ROAD COMMISSIONER  
 UNDER SEC. 79, ORD 4098 BY REQUISITION NO 22 DATED JUNE 18, 1948.  
 BEARINGS ARE BASED ON THE CALIFORNIA  
 COORDINATE SYSTEM ZONE 7 PER CHAPTER  
 1307, STATUTES 1947 SEE C.S. 9423.  
 F.B. 1580-1-217

FIELD WORK BY A. NIELSTROM  
 OFFICE WORK BY H.L. HIGGINS  
 CHECKED BY K.R.M. PHERSON.

THIS MAP FILED FEB 1953  
 WILLIAM J. FOX-COUNTY SURVEYOR

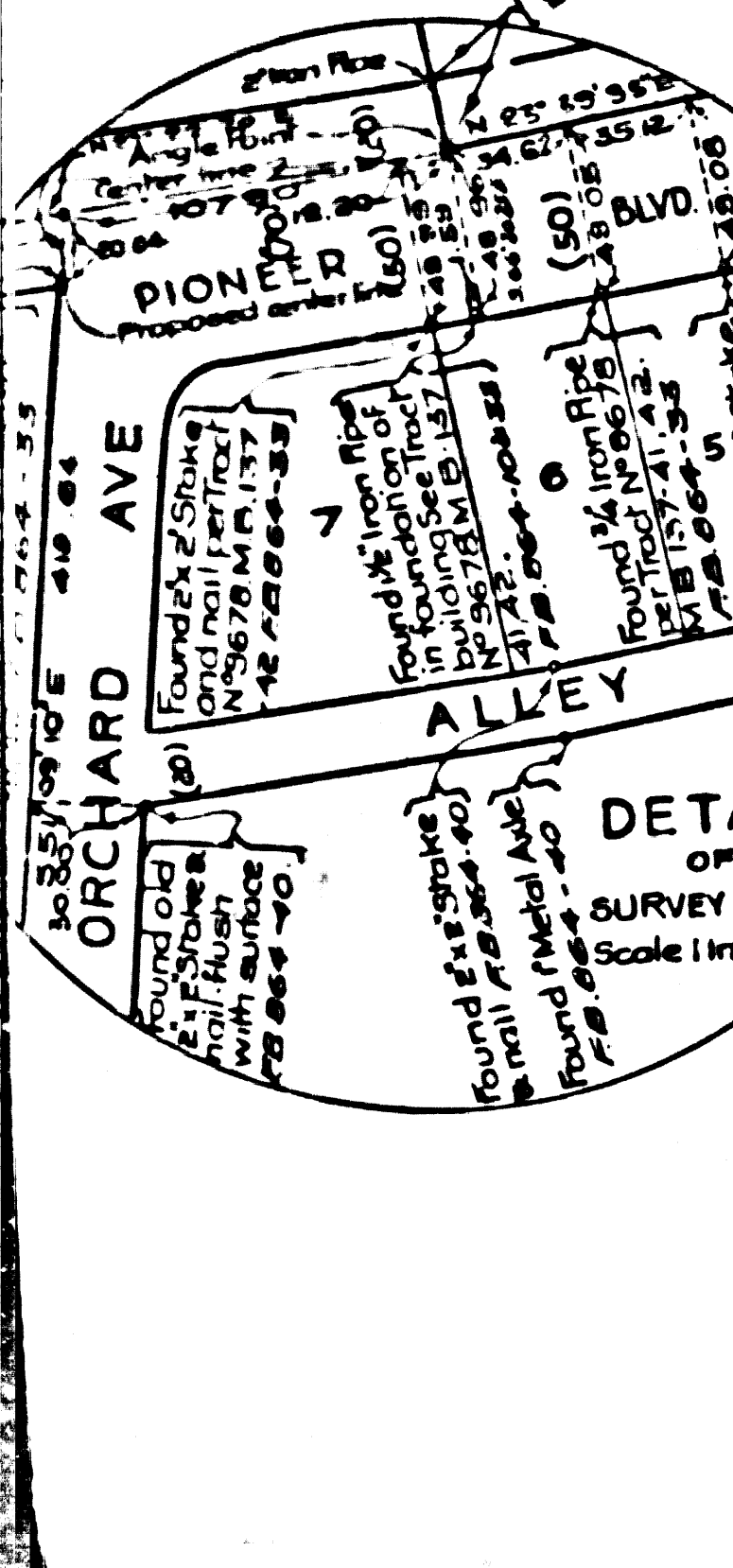
CSB-2260-2  
 A1 OF A3





LOT-41  
7.06 ACRES  
AND  
L.S. 12-22  
BRODRICK

LOT-33  
63.25 ACRES



TRACT

LOT-33  
63.25 ACRES

CSB-2260-2  
A2 OF A3

DANBY AVE  
BEN ALDER AVE

TRACT No 15449  
M.B. 272-16, 17

TRACT No 15036  
M.B. 335-38, 39

BEN ALDER AVE

NORWALK BLVD

ORANGE GROVE BLVD

TRACT

TRACT

TRACT

TRACT

TRACT

TRACT

TRACT

SAN LOS ANGELES COUNTY FLOOD CONTROL CHANNEL RIVER

C.S.B.-269-1

C.S.B.-269-1

LOT-41  
17.06 ACRES  
BRODRICK

AND  
L.S.-12-22

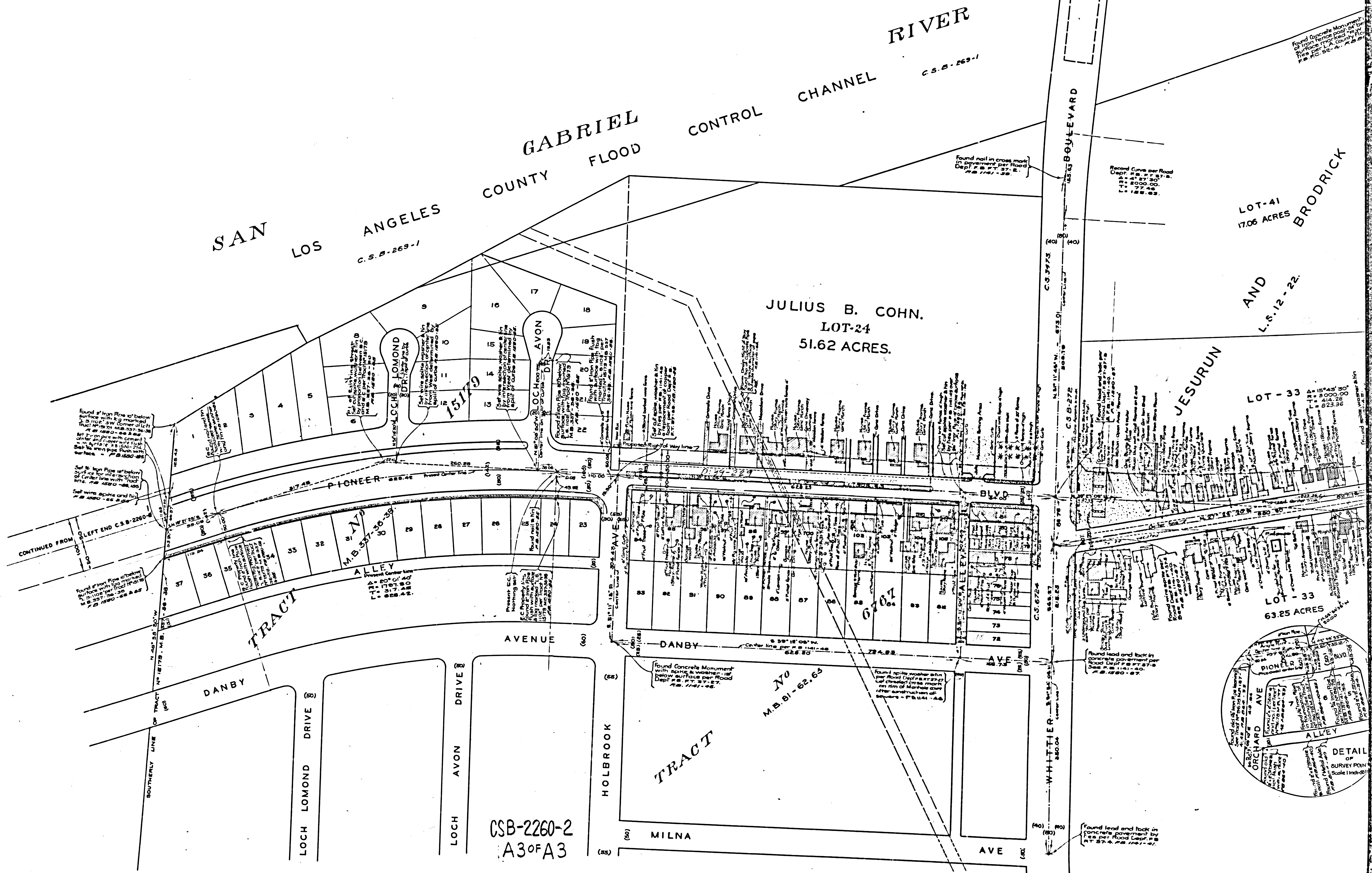
JULIUS B. COHN.  
LOT-24  
51.62 ACRES.

JESURUN

LOT-33

LOT-33  
63.25 ACRES

CSB-2260-2  
A3 OF A3



Found 1/2" iron pipe 12" below surface with big marked 'A' 3 1/2" up SW corner of lot. At 1500 on 1500-1500. Set 2" iron pipe with cement in SW corner of lot. Set 1/2" iron pipe flush with surface. P.B. 1500-1500.

Found 1/2" iron pipe 12" below surface with big marked 'A' 3 1/2" up SW corner of lot. At 1500 on 1500-1500. Set 2" iron pipe with cement in SW corner of lot. Set 1/2" iron pipe flush with surface. P.B. 1500-1500.

Found Concrete Monument with spike & washer 18" below surface per Road Dept. P.B. 1500-1500.

Found spike washer with 1/2" iron pipe 12" below surface per Road Dept. P.B. 1500-1500.

Found lead and back in concrete pavement per Road Dept. P.B. 1500-1500.

Found lead and back in concrete pavement per Road Dept. P.B. 1500-1500.

