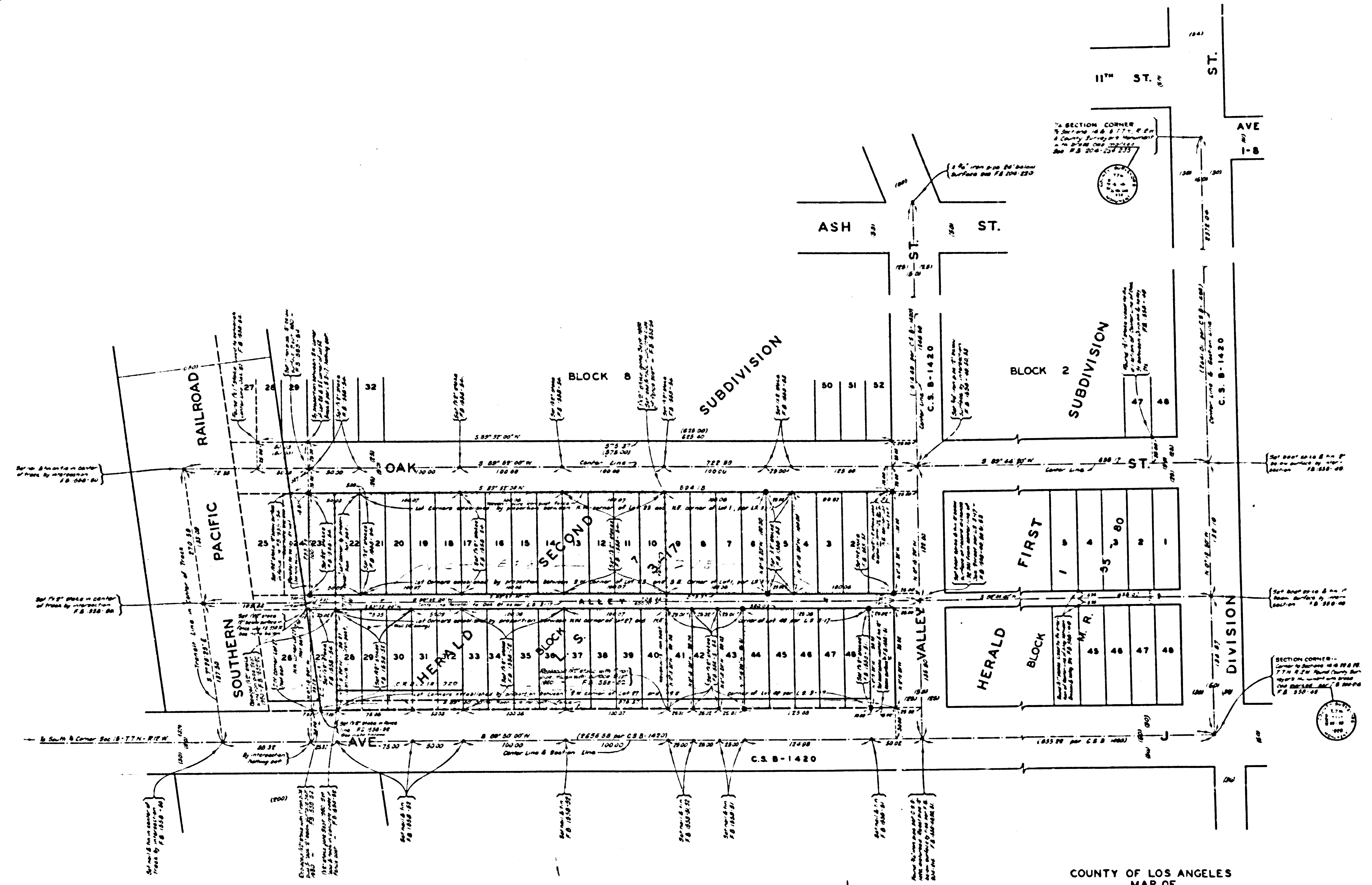


COMPLA 2116EAOB2 MW 14 B 5503

COMPLA 2116EAOB2 MW 14 B 5503

COMPLA 2116EAOB2 MW 14 B 5503

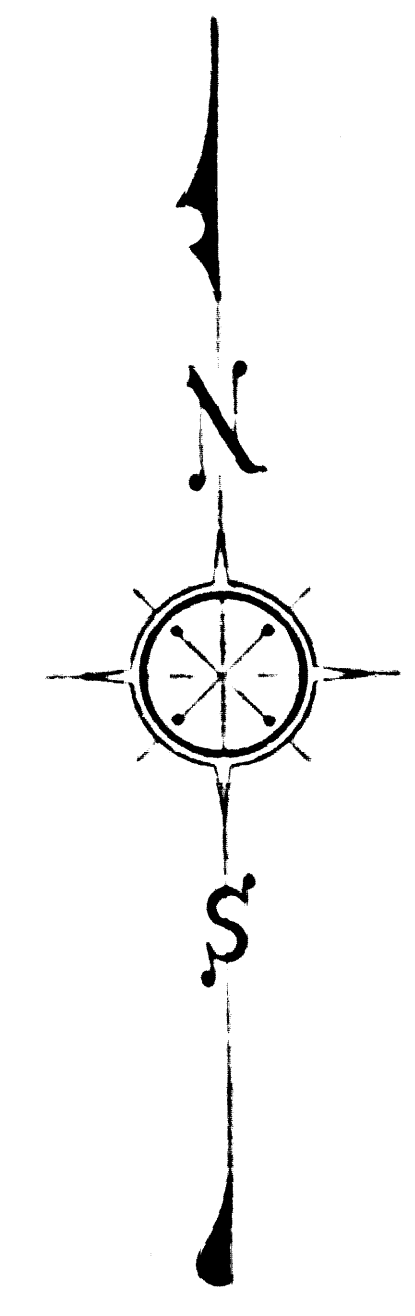
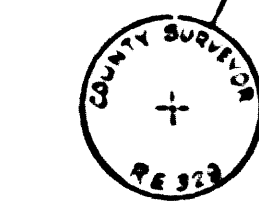
COMPLA 2116EAOB2 MW 14 B 5503



NOTE: The West lines of Lots 22 & 27, Block 7 were adjusted by a line through the southeast corner of Lot 18, Block 8 and parallel to Valley Street. The East and West lines of Lots 22 & 27, Block 7 were adjusted by a line through the southeast corner of Lot 18, Block 8 and parallel to Valley Street.

The 1/4 section corner is located at the intersection of the center line of Valley Street and the center line of the 1/4 section.

NOTE: Points shown with dots are the 1/4 section corners. The 1/4 section corner is located at the intersection of the center line of Valley Street and the center line of the 1/4 section.



CSB-2262
A1 OF A1

COUNTY OF LOS ANGELES
MAP OF
PROPERTY OWNED BY
COUNTY WATER WORKS DISTRICT NO. 4
BEING A PORTION OF
BLOCK 7 OF HERALD SECOND SUBDIVISION
IN THE TOWN OF LANCASTER - L.S. 3-17.

COUNTY SURVEYORS MAP NO. B-2262
SCALE - 1 INCH = 40 FEET.

JOB NUMBER 0174
C. E. ARNOLD - COUNTY SURVEYOR
SURVEYED APRIL 1950

SURVEYED ON REQUEST OF THE CHIEF MECHANICAL
ENGINEER UNDER SEC. 79, ORD. 4099, BY LETTER DATED
APRIL 4, 1950

BEARINGS ARE BASED ON THE BEARING OF AVENUE
J AS SHOWN ON C. S. B-1420

F. B. 1558-40-56

FIELD WORK BY..... E. A. ROSECRANS
OFFICE WORK BY..... T. M. ICHIEI
CHECKED BY..... R. R. McPHERSON

INDEX-70