

MARGINAL MAP
SHOWING
TOPOGRAPHY
SCALE: 1 INCH = 10 FT.
FIELD WORK BY..... J. L. WILLEY
OFFICE WORK BY..... R. E. SNYDER
CHECKED BY..... C. J. GALLI
FB 1599; PLANE TABLE SHEET F-398

DATUM - MEAN SEA LEVEL
THE ELEVATIONS SHOWN HEREON ARE BASED
ON THE U.S.C. & G.S. 1928 ADJUSTMENT OF
U.S.C.S. B.M. "A 11-1922" (U.S. 76)

Revised By: W.G. Van Doren August 4, 1953

COUNTY OF LOS ANGELES
MAP OF
**CONSOLIDATED COUNTY FIRE
PROTECTION DISTRICT**
FIRE STATION SITE ENGINE CO. NO. 31

BEING LOT 8 AND THE NORTHERLY HALF OF LOT 9
BLOCK 30 MAP OF CLEARWATER M.R.-19-51-54
COUNTY SURVEYORS MAP NO B-2264
SCALE: 1 INCH = 100 FT.

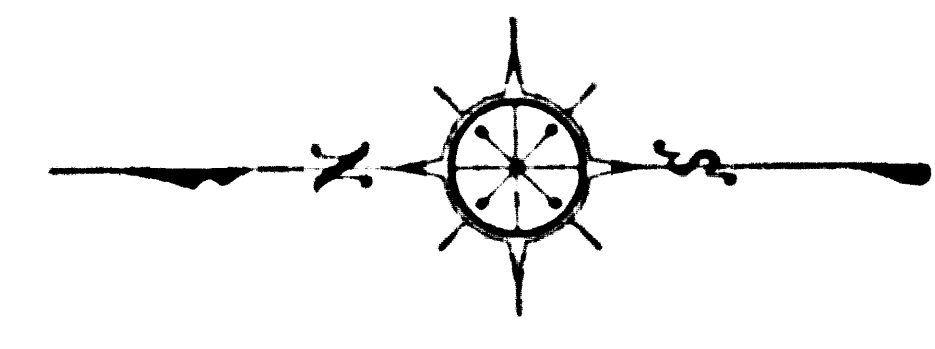
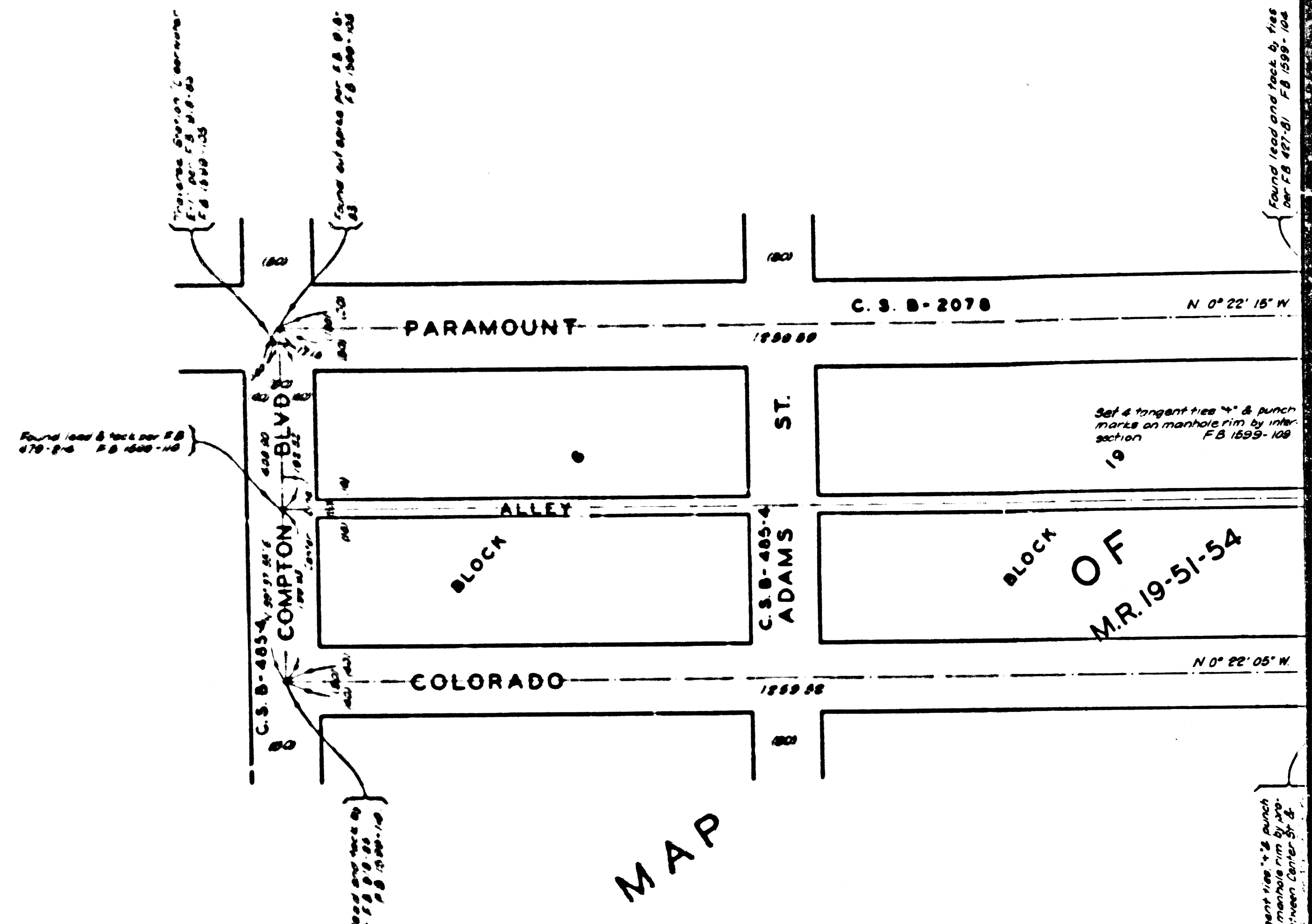
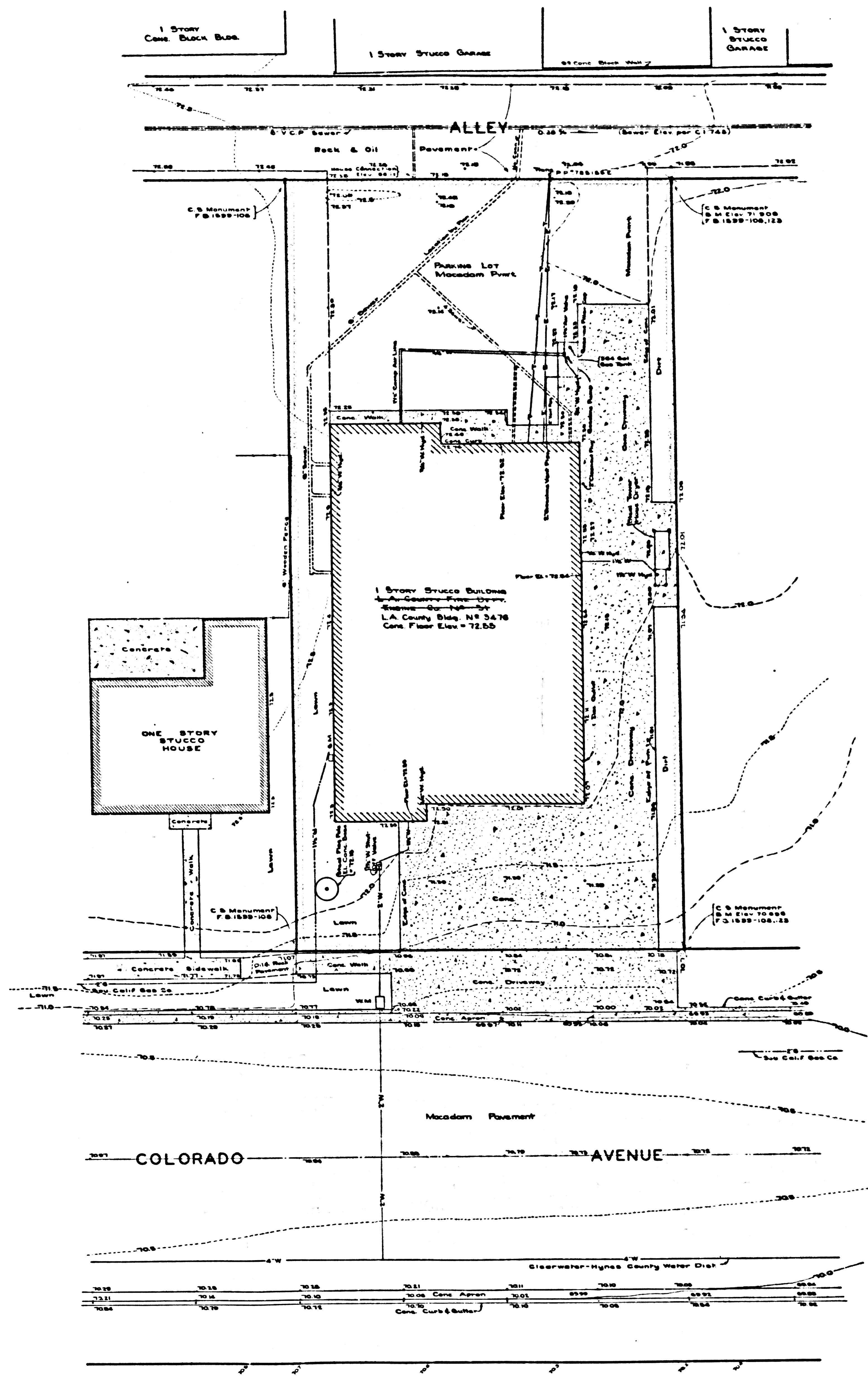
JOB NUMBER 0203
C. E. ARNOLD - COUNTY SURVEYOR
SURVEYED JULY 1950
SURVEYED ON REQUEST OF THE COUNTY
FORESTER AND FIRE WARDEN UNDER SEC. 79
ORD. 4099 BY LETTER DATED JUNE 28, 1950
AND AS AUTHORIZED BY THE BOARD OF
SUPERVISORS IN THEIR ORDER OF JAN. 13, 1950.
BEARINGS ARE BASED ON THE BEARING OF
PARAMOUNT BLVD. AS SHOWN ON C.S.B. 2078.

FB 1599-101-131
FIELD WORK BY J. L. WILLEY
OFFICE WORK BY T. M. ICHEN
CHECKED BY A. H. DREW

ALSO KNOWN AS PARAMOUNT FIRE STATION NO 31
THIS SITE ABANDONED FOR FIRE STATION PURPOSES
FOR CURRENT FIRE STATION SITE NO 31 SEE C.S.B. 2959
CSB-2264
A1 OF A2

COPYRIGHT SURVEYORS MAP NO B-5589

COPYRIGHT SURVEYORS MAP NO B-5589



MARGINAL MAP
SHOWING
TOPOGRAPHY
SCALE: 1 INCH = 10 FT.
FIELD WORK BY..... J. L. WILLEY
OFFICE WORK BY..... R. E. SNYDER
CHECKED BY..... C. J. GALLI
F.B. 1599; PLANE TABLE SHEET F-398

DATUM - MEAN SEA LEVEL
THE ELEVATIONS SHOWN HEREON ARE BASED
ON THE U.S.C. & G.S. 1928 ADJUSTMENT OF
U.S.G.S. B.M. "A" 11-1922" (U.S. 174)

Revised By: W. H. Van Doren, August 4, 1953

CSB-2264
A2 OF A2