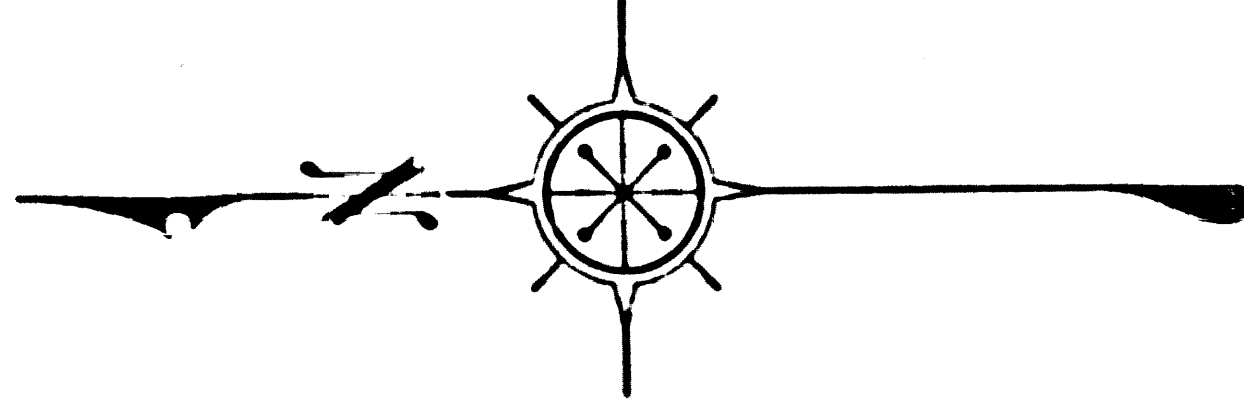
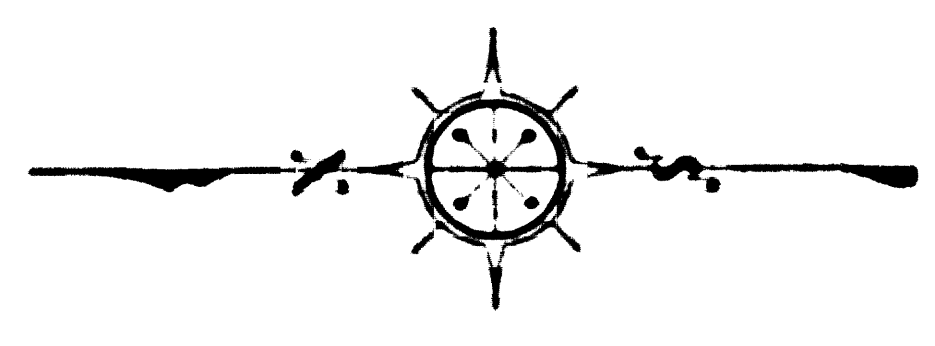
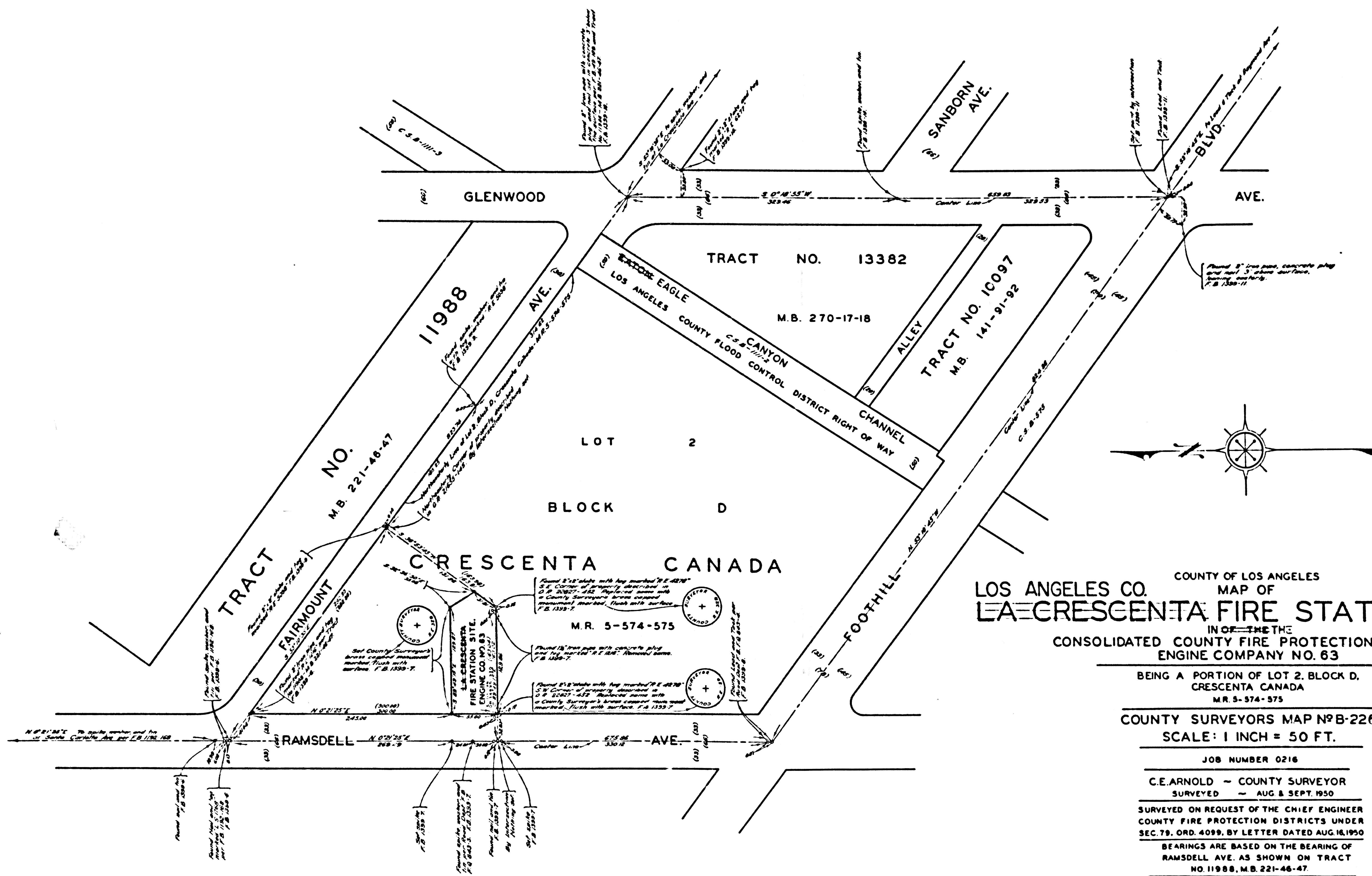


7855-B 04 94M 2073V02E Y14U03

COUNTY SURVEYOR MAP NO. B-5563



**MARGINAL MAP**  
SHOWING  
**TOPOGRAPHY**  
SCALE = 1 INCH = 10 FT.  
FIELD WORK BY.....C. A. BENSON  
OFFICE WORK BY.....R. E. SNYDER  
CHECKED BY.....L. DETILLA  
FIELD BOOK 1399

DATUM - MEAN SEA LEVEL  
ELEVATIONS SHOWN HEREON ARE BASED  
ON THE 1928 U.S.C. & G.S. ELEVATION OF  
U.S.G.S. B.M. "RS-5-1924" (U.S. 948)

NOTE:  
THE ROAD DEPT. HAS NO PRESENT  
PLANS FOR THE FUTURE IMPROVEMENT  
OF RAMSDELL AVE. JAN. 1951

Revised Aug. 1952 P.E.B.  
As shown on P.T. 597 E. 367  
J.N. 02030

COUNTY OF LOS ANGELES  
MAP OF  
**LOS ANGELES CO. LA-CRESCENTA FIRE STATION SITE No. 63**

IN OF THE THE  
CONSOLIDATED COUNTY FIRE PROTECTION DISTRICT  
ENGINE COMPANY NO. 63

BEING A PORTION OF LOT 2, BLOCK D,  
CRESCENTA CANADA  
M.R. 5-574-575

COUNTY SURVEYORS MAP No. B-2267  
SCALE: 1 INCH = 50 FT.

JOB NUMBER 0216  
C.E. ARNOLD - COUNTY SURVEYOR  
SURVEYED - AUG & SEPT. 1950

SURVEYED ON REQUEST OF THE CHIEF ENGINEER  
COUNTY FIRE PROTECTION DISTRICTS UNDER  
SEC. 79, ORD. 4099, BY LETTER DATED AUG. 16, 1950

BEARINGS ARE BASED ON THE BEARING OF  
RAMSDELL AVE. AS SHOWN ON TRACT  
NO. 11988, M.B. 221-46-47

INDEX S:  
F. B. 1399-5-26  
FIELD WORK BY J.J. LANIGAN  
OFFICE WORK BY D.J. STELMA  
CHECKED BY K.R. M'PHERSON

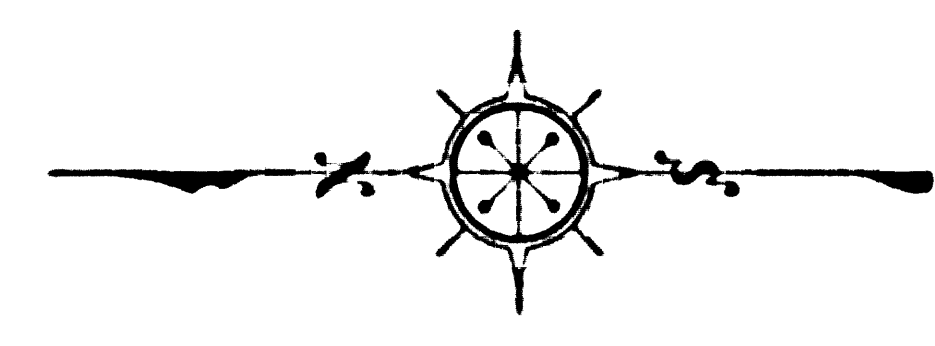
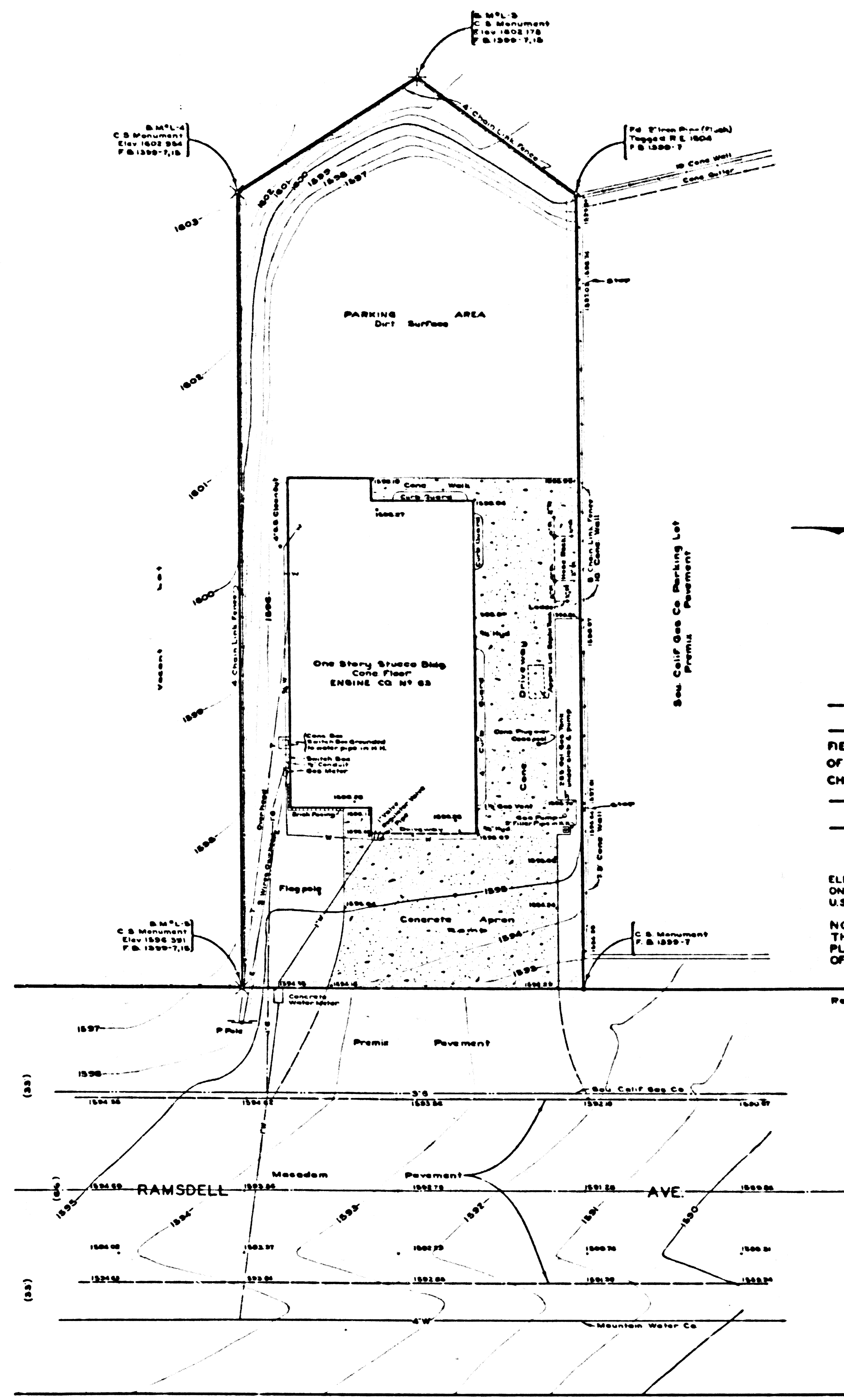
CSB-2267  
A1 OF A2



COPYRIGHT SURVEYORS MAP NO. B-5561

COPYRIGHT SURVEYORS MAP NO. B-5561

CSB-2267  
A2 OF A2



**MARGINAL MAP  
SHOWING  
TOPOGRAPHY**  
SCALE = 1 INCH = 10 FT.  
FIELD WORK BY.....C. A. BENSON  
OFFICE WORK BY.....R. E. SNYDER  
CHECKED BY.....L. DETILLA  
FIELD BOOK 1309

DATUM - MEAN SEA LEVEL  
ELEVATIONS SHOWN HEREON ARE BASED  
ON THE 1928 U.S.C. & G.S. ELEVATION OF  
U.S.G.S. B.M. "R3-3-1924" (U.S. 948)  
NOTE:  
THE ROAD DEPT. HAS NO PRESENT  
PLANS FOR THE FUTURE IMPROVEMENT  
OF RAMSDELL AVE. JAN. 1951  
Revised Aug 1952 P.E.S.  
As shown on DT 301 E 367  
J.M. 02830

