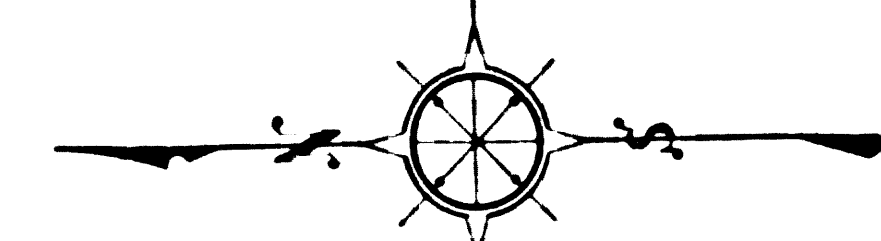
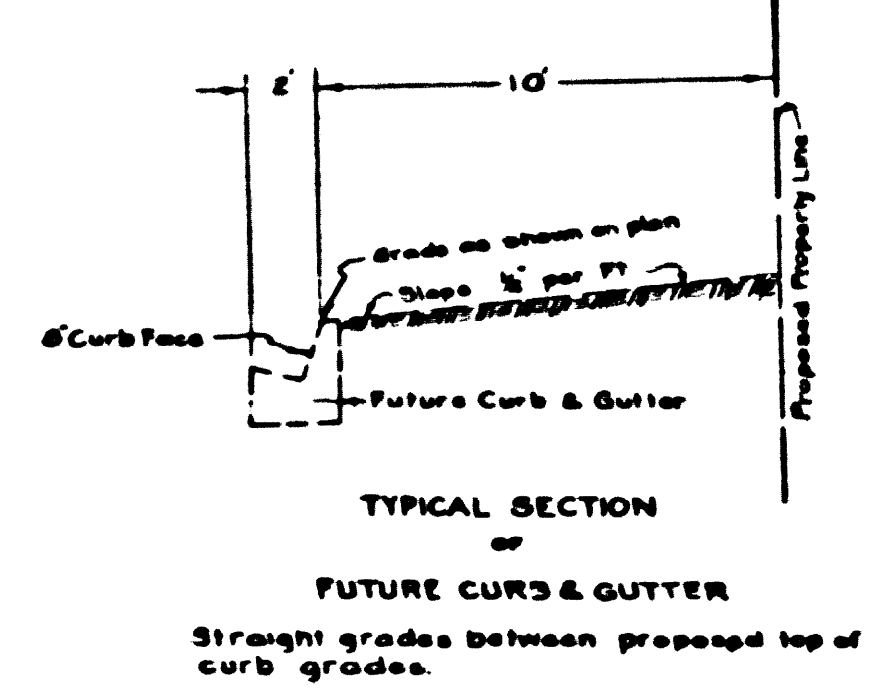


B.M. 1181
 Insert elev. 15' into North 71.48
 Insert elev. 8' into East 72.28
 Insert elev. 8' into West 72.18
 Insert elev. 10' into South 71.58
 F.B. 1635-28

B.M. 1181
 Insert elev. 15' into North 70.80
 Insert elev. 15' into South 70.81
 F.B. 1635-37

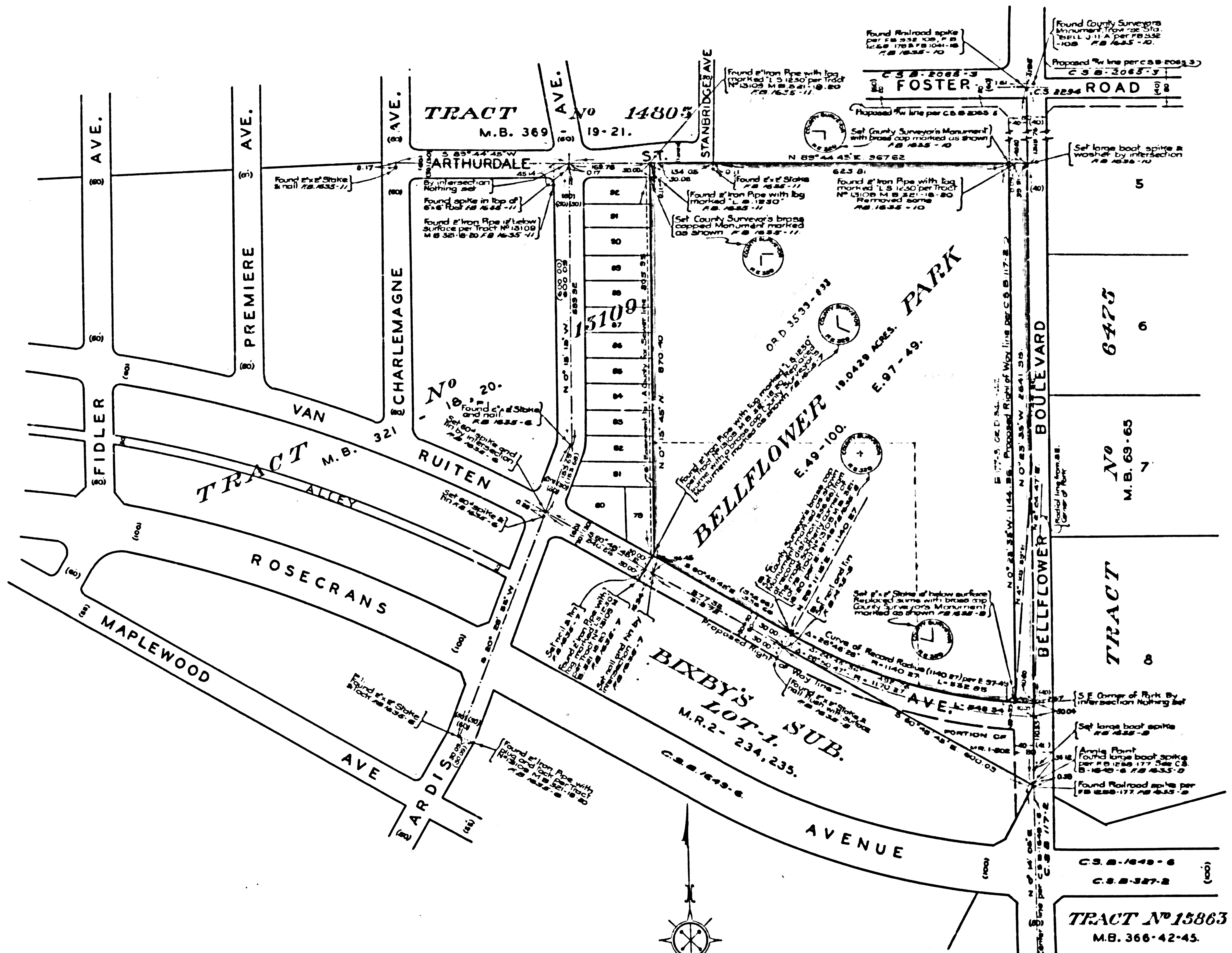
C.S. Mon.
 F.B. 1635-9

B.M. 1181
 Elev. 84.056
 Best spike in curb
 F.B. 1635-16



MARGINAL MAP
 SHOWING
 TOPOGRAPHY
 SCALE: 1 INCH = 40 FT.
 FIELD WORK BY..... E. C. WALLACE
 OFFICE WORK BY..... L. DE TILLA
 CHECKED BY..... Y. ITO
 F. B. 1635-5-44

DATUM - MEAN SEA LEVEL
 ELEVATIONS SHOWN HEREON ARE BASED
 UPON B.M. 1181 (F.B. 1238-B) THE DATUM
 OF WHICH WAS DETERMINED FROM THE
 ROAD DEPT. ELEV. OF U.S.C.S. B.M. 830
 (U.S. 187 LB. 379-47 AND LB. 805-12)



COUNTY OF LOS ANGELES
 MAP OF
BELLFLOWER PARK
 BEING
 A PORTION OF THE S.E. 1/4 OF THE S.W. 1/4 OF
 SECTION 15, T. 3S., R. 12W. IN THE RANCHO
 SANTA GERTRUDES PER M.R. 1-502.
 COUNTY SURVEYORS MAP NO B-2268.
 SCALE - 1 INCH = 100 FT.

INDEX 33
 JOB NUMBER 8589.
 C.E. ARNOLD - COUNTY SURVEYOR.
 SURVEYED APRIL - JUNE 1950.
 SURVEYED ON REQUEST OF THE DIRECTOR PARKS AND
 RECREATION UNDER SEC. 79, ORD. 4099 BY LETTER
 DATED MARCH 7 - 1950. & B.G. DATED MAY 21 - 1946.
 BEARINGS ARE BASED ON THE CALIFORNIA
 COORDINATE SYSTEM ZONE 7 PER CHAPTER
 1907 - STATUTES - 1947. . . . SEE C.S. 9423
 F.B. 1635-5-28

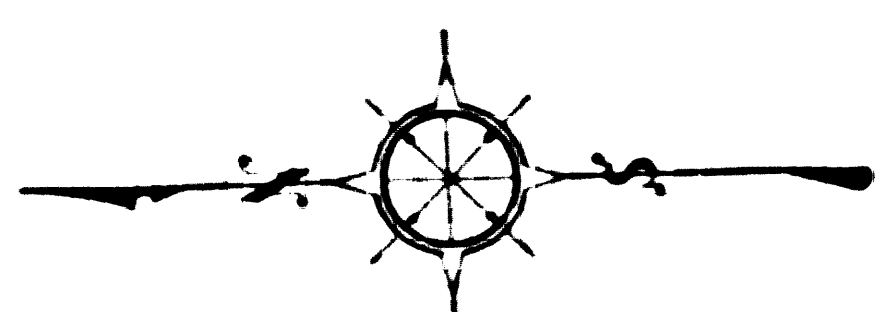
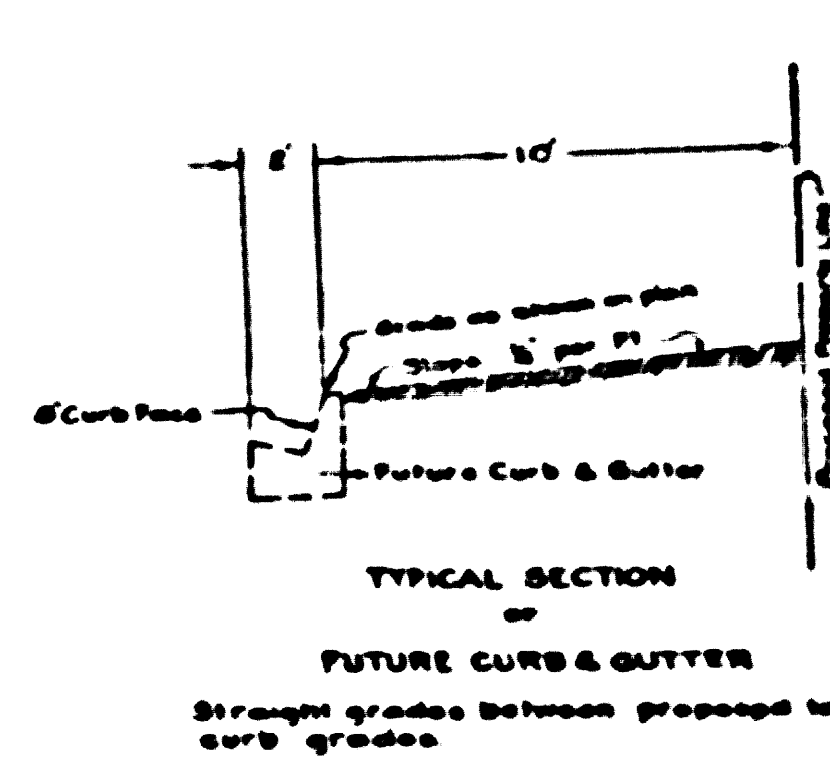
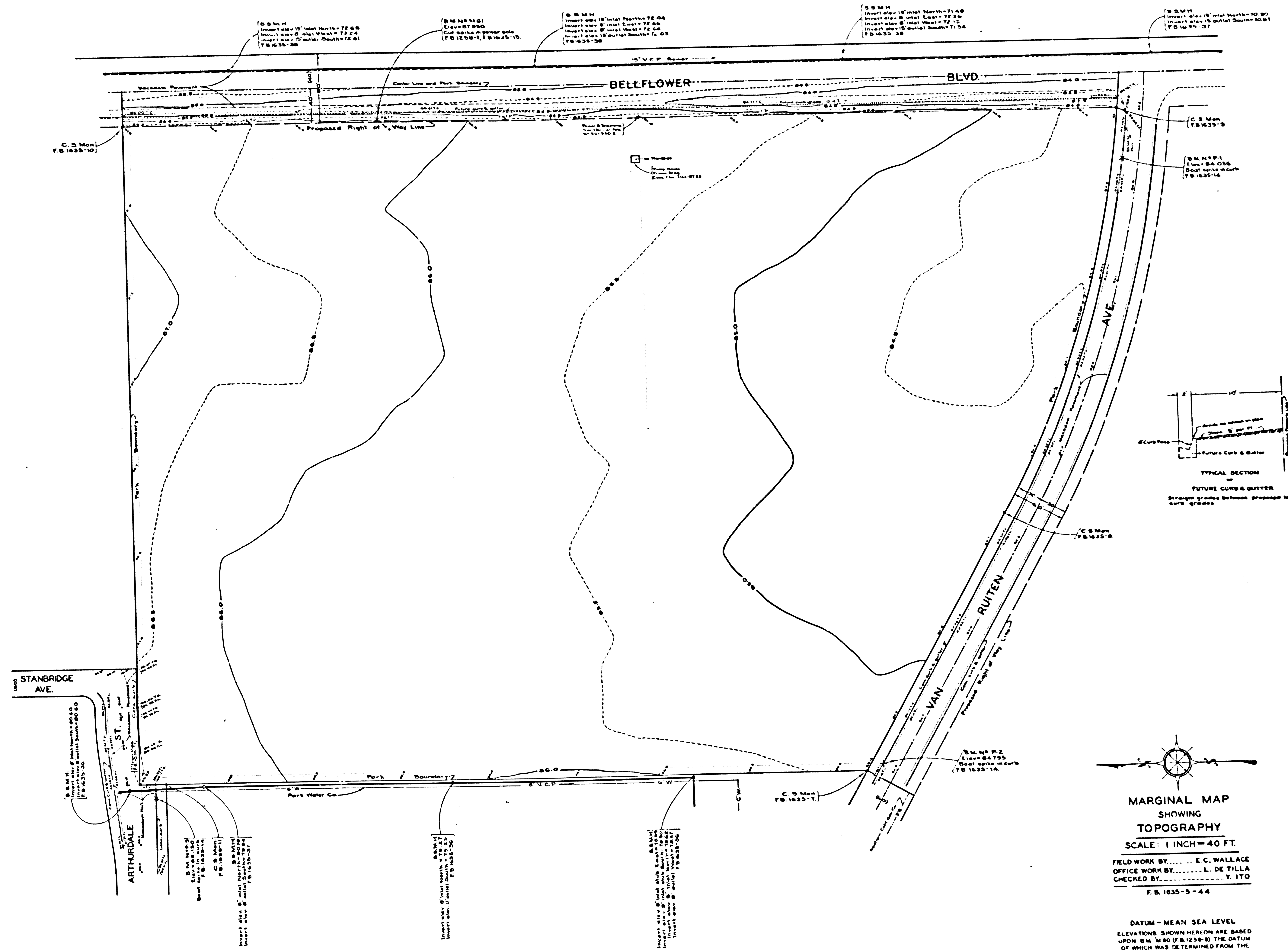
CSB-2268
 A1 OF A2
 FIELD WORK BY E.C. WALLACE
 OFFICE WORK BY HUMPHIGGS
 CHECKED BY M. RICHMOND

COUNTY SURVEYORS MAP NO B-5588

COUNTY SURVEYORS MAP NO B-5588

COPYRIGHT SURVEYORS MAP NO. B-5568

COPYRIGHT SURVEYORS MAP NO. B-5568



MARGINAL MAP
SHOWING
TOPOGRAPHY
SCALE: 1 INCH = 40 FT.
FIELD WORK BY..... E. C. WALLACE
OFFICE WORK BY..... L. DE TILLA
CHECKED BY..... Y. ITO
F. B. 1635-5-44

DATUM - MEAN SEA LEVEL
ELEVATIONS SHOWN HEREON ARE BASED UPON B.M. 1660 (F.B. 1258-8) THE DATUM OF WHICH WAS DETERMINED FROM THE ROAD DEPT. ELEV. OF U.S. B.M. 830 (U.S. 187 LB 379-47 AND LB 805-13)

CSB-2268
A2 OF A2