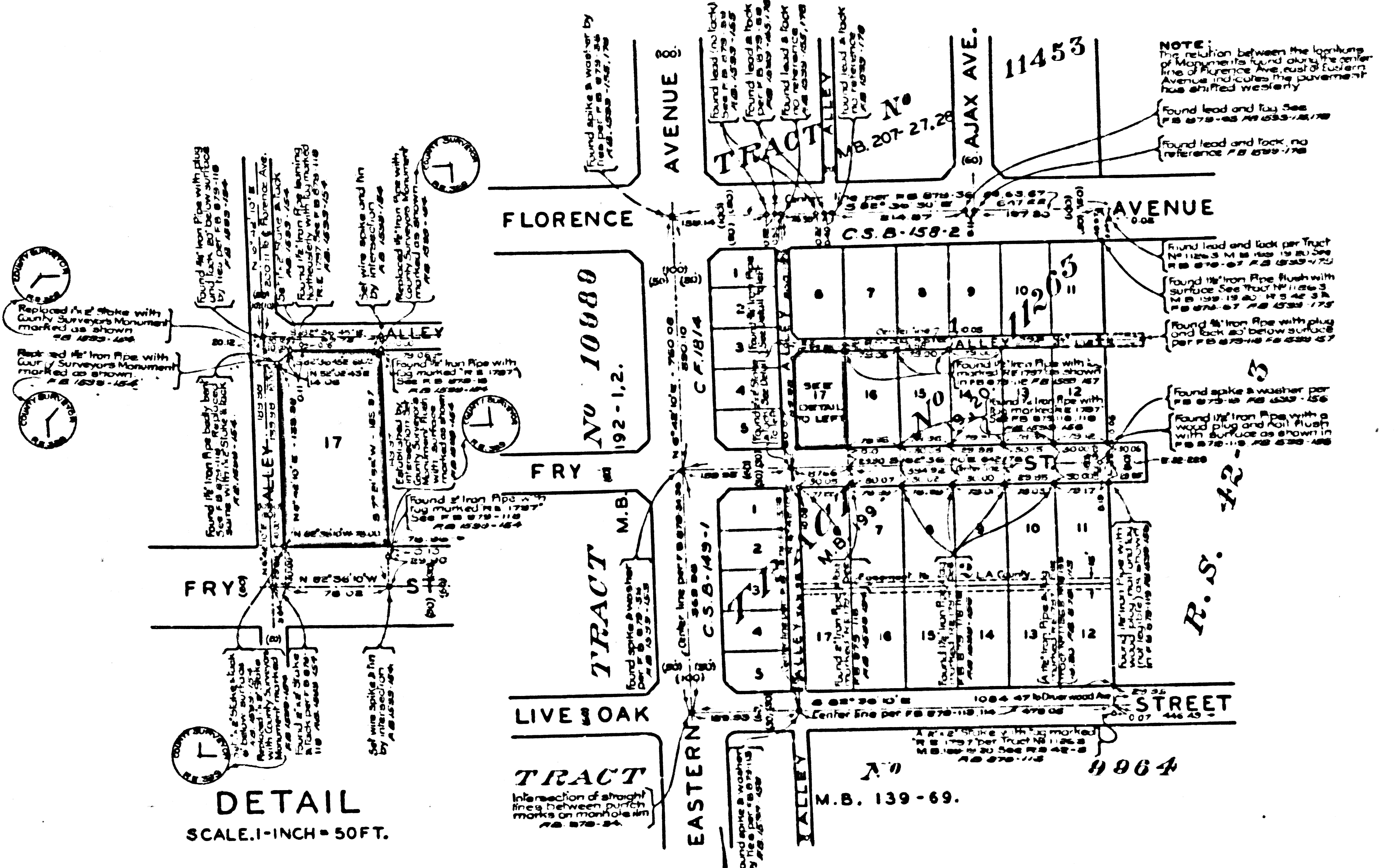
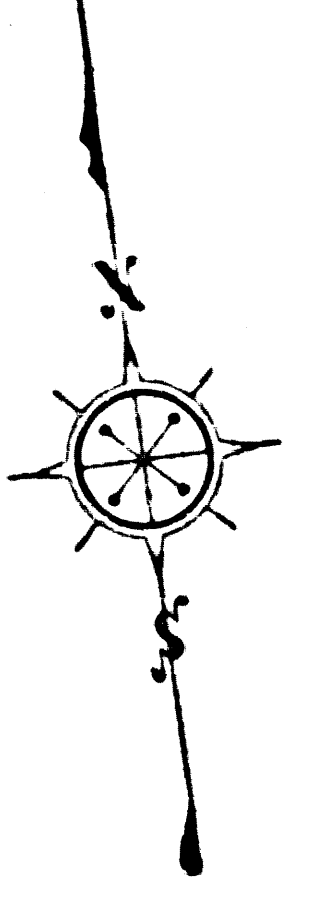


MARGINAL MAP
SHOWING
TOPOGRAPHY
SCALE: 1 INCH = 10 FT.

FIELD WORK BY.....M. VAN DEREN
OFFICE WORK BY.....R. E. SNYDER
CHECKED BY.....L. DETILLA
F.B.1599-159-173

DATUM - MEAN SEA LEVEL
ELEVATIONS SHOWN HEREON ARE BASED UPON BM 10295-
BM 11, F.B.105-307 THE ELEVATION OF WHICH
WAS DETERMINED FROM U.S.C. & G.S. B.M.S.
"89" (U.S. 2685) "A-3" (U.S. 344) "D-3" (U.S. 337),
AND "Y-32" (U.S.) BASED UPON THE U.S.C. & G.S.
ADJUSTMENT OF 1934.
REFERENCE BM 10295 EASTERN AVE AND
LIVE OAK ST LEAD AND TACK IN CURB
ONE FOOT NORTH OF NORTH END CURB
RETURN AT NORTHWEST CORNER
ELEV 116.690 F.B.1599-162
Revised By W.G.V.D. 7-14-55



DETAIL
SCALE: 1 INCH = 50 FT.

MAP OF
LOS ANGELES COUNTY FIRE STATION SITE NO 39
COUNTY OF LOS ANGELES
IN MAP OF THE
CONSOLIDATED FIRE PROTECTION DISTRICT
BELL GARDENS FIRE STATION SITE-ENGINE CO. NO 39.
BEING LOT 17, BLOCK-1-TRACT NO 11263-M.B.199-19,20.

COUNTY SURVEYORS MAP NO B-2270
SCALE 1 INCH = 100 FT.

JOB NUMBER - 0213.
C.E.ARNOLD - COUNTY SURVEYOR.
SURVEYED - JULY-1950

SURVEYED ON REQUEST OF THE CHIEF ENGINEER
COUNTY FIRE PROTECTION DISTRICTS, UNDER
SEC. 78 ORD. 4089, BY LETTER DATED JULY 18, 1950
BEARINGS ARE BASED ON THE BEARING OF
FRY ST. AS SHOWN ON TRACT NO 11263-M.B.199-19,20.

F.B.1599-151-156.
FIELD WORK BY M. VAN DEREN.
OFFICE WORK BY H.M. HIGGINS.
CHECKED BY D.M. PINLEY

CSB-2270
A1 OF A1