

COUNTY OF LOS ANGELES  
 MAP OF  
**DUARTE FIRE STATION SITE**  
**ENGINE COMPANY NO. 48**  
 OF THE  
**CONSOLIDATED COUNTY FIRE PROTECTION DISTRICT**  
 BEING A PORTION OF LOT 8, SEC. 36, T. 1 N., R. 11 W. OF THE  
 SUBDIVISION OF THE RANCHO AZUSA DE DUARTE - M.R. 6-80

COUNTY SURVEYORS MAP NO. B-2271  
 SCALE - 1 INCH = 50 FT.

JOB NUMBER 0216 INDEX-46  
**C.E. ARNOLD - COUNTY SURVEYOR**  
 SURVEYED - SEPTEMBER 1950  
 SURVEYED ON REQUEST OF THE CHIEF ENGINEER  
 COUNTY FIRE PROTECTION DISTRICTS UNDER  
 SEC. 7, ORD. 4089, BY LETTER DATED AUG. 18, 1950  
 BEARINGS ARE BASED ON THE BEARING OF  
 BUENA VISTA AVENUE AS SHOWN ON C.S. B - 1949.  
 P.B. 777-151 - 165.

FIELD WORK BY C.A. RENSON  
 OFFICE WORK BY T.M. ICHTEN  
 CHECKED BY R.R. McPHERSON

THIS SITE ABANDONED FOR FIRE STATION PURPOSES  
 FOR CURRENT FIRE STATION SITE NO. 48 SEE C.S.B. 3034

CSB-2271  
 A1 OF A2

MAP  
 GRAPHY  
 1" = 10 FT  
 C. A. BENSON  
 R. E. SNYDER  
 L. DETILLA

SEA LEVEL  
 ON ARE BASED UPON  
 ADJUSTMENT OF WHICH  
 (C.G. 957 U.S. 2817)  
 ADJUSTMENT OF

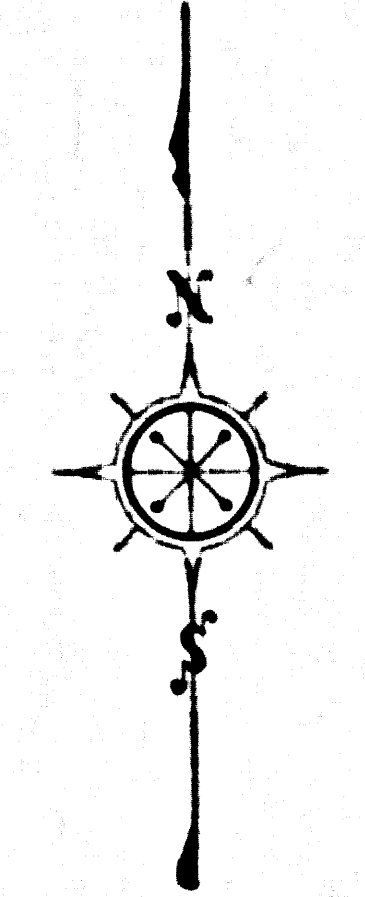
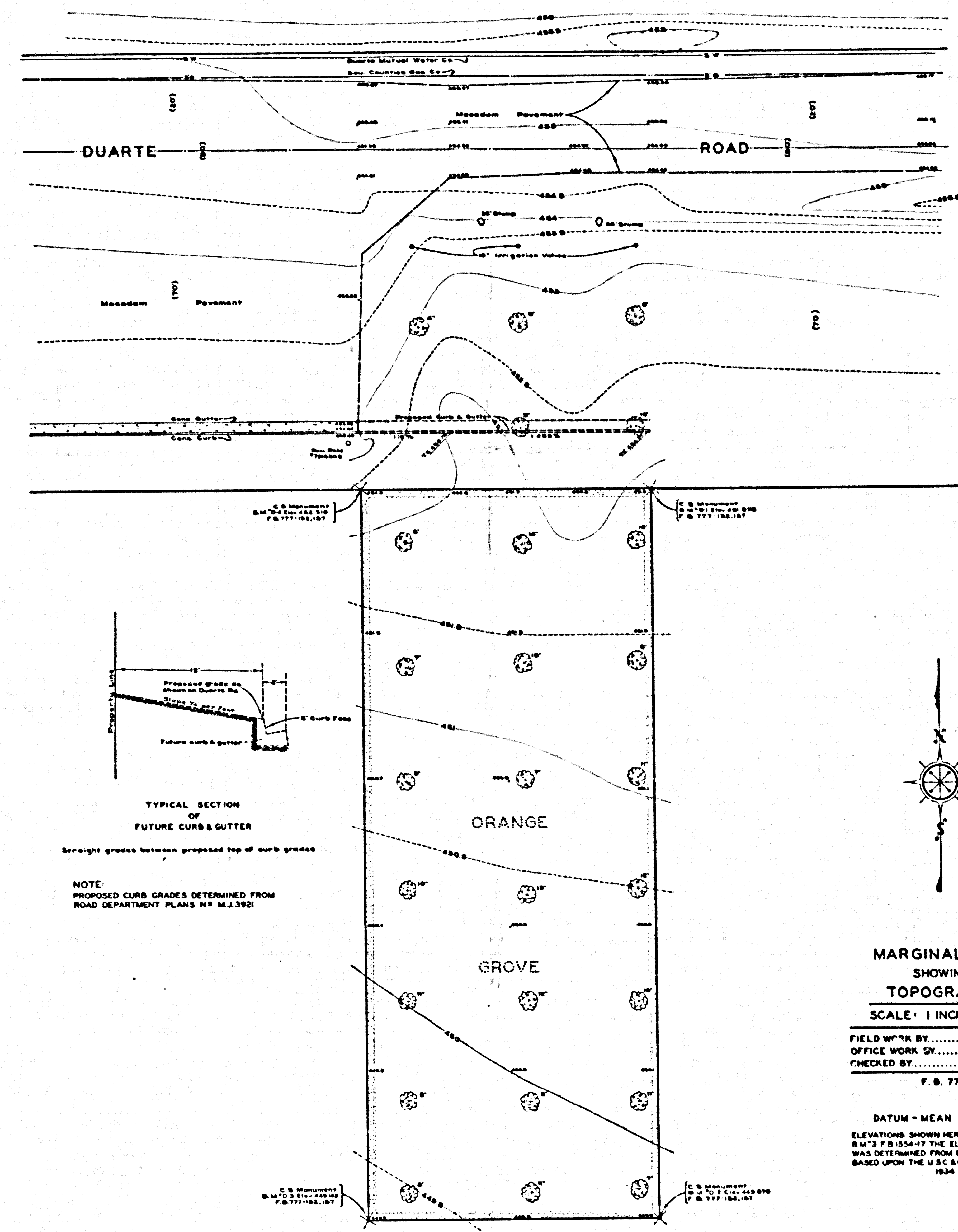
COMALA 2018AE1052 MYB No B-5511

COMALA 2018AE1052 MYB No B-5511



CONSULTING SURVEYORS MAP NO. B-5531

CONSULTING SURVEYORS MAP NO. B-5531

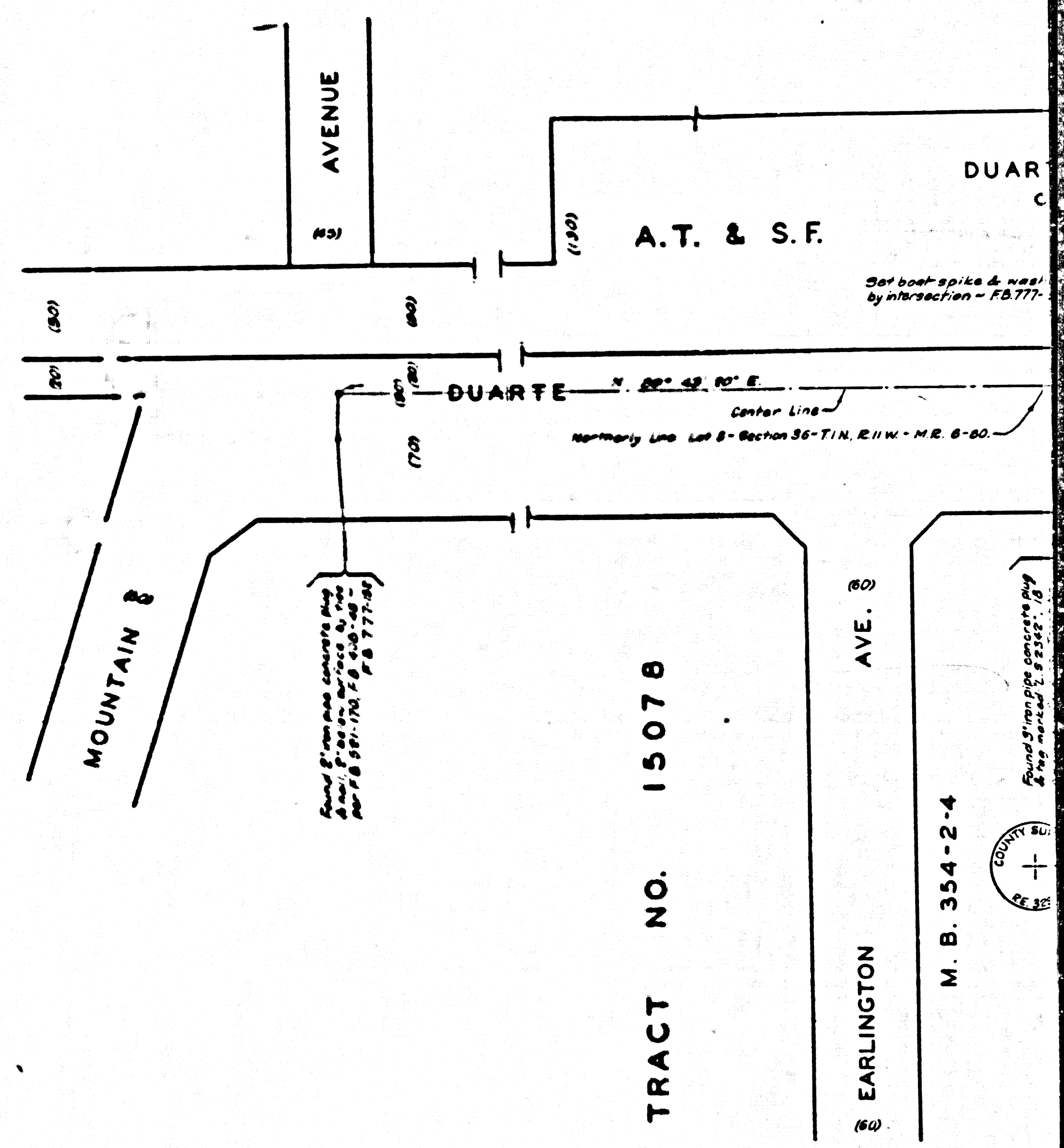


MARGINAL MAP  
SHOWING  
TOPOGRAPHY  
SCALE: 1 INCH = 10 FT.

FIELD WORK BY..... E. A. BENSON  
OFFICE WORK BY..... R. E. SNYDER  
CHECKED BY..... L. DETILLA  
F. B. 777

DATUM - MEAN SEA LEVEL  
ELEVATIONS SHOWN HEREON ARE BASED UPON  
B.M.'S F. B. 1544-7 THE ELEVATION OF WHICH  
WAS DETERMINED FROM B.M.'S G-987U A 2617  
BASED UPON THE U.S.C. & G.S. ADJUSTMENT OF  
1928

CSB-2271  
A2 OF A2



SKELLWILL  
Found 3\"/>